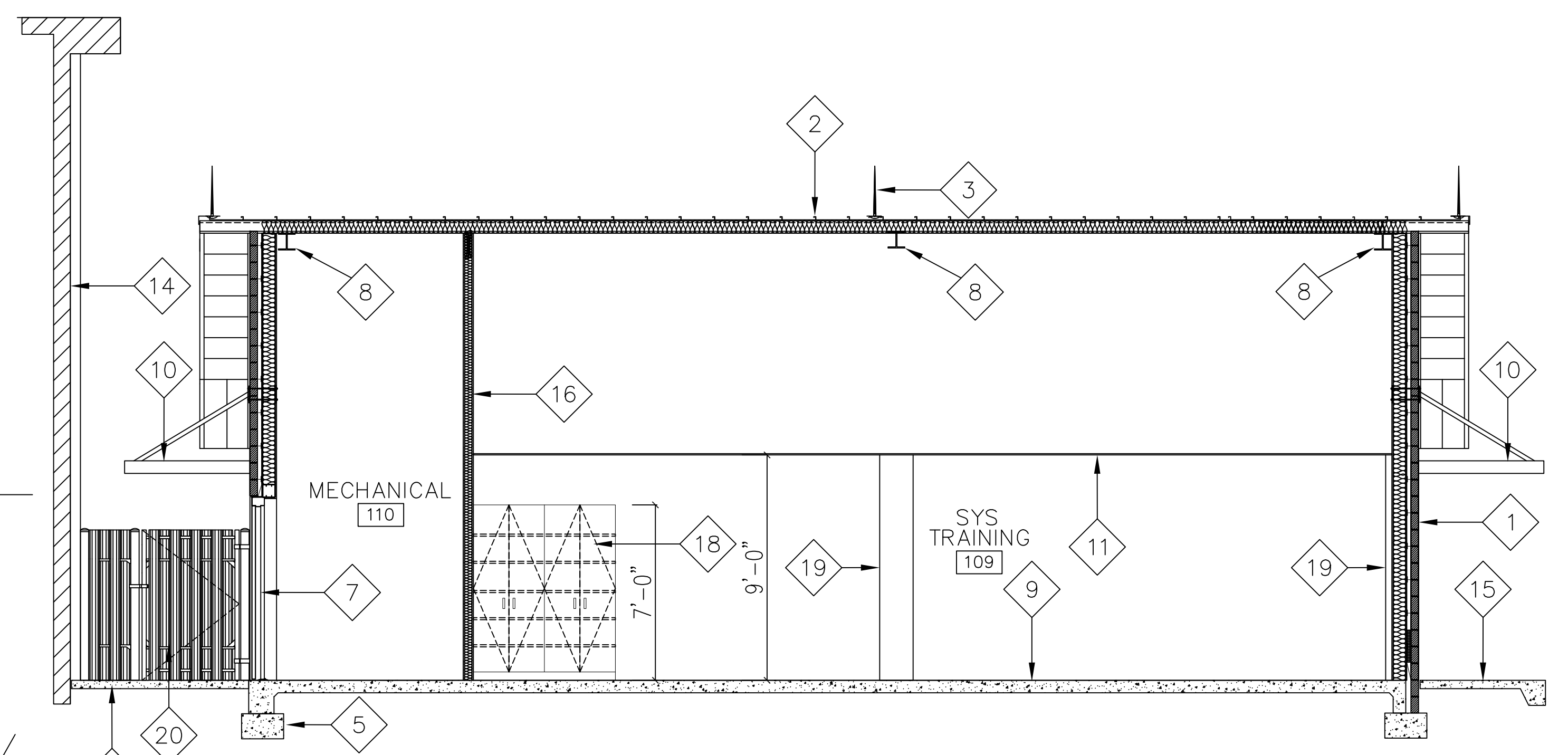
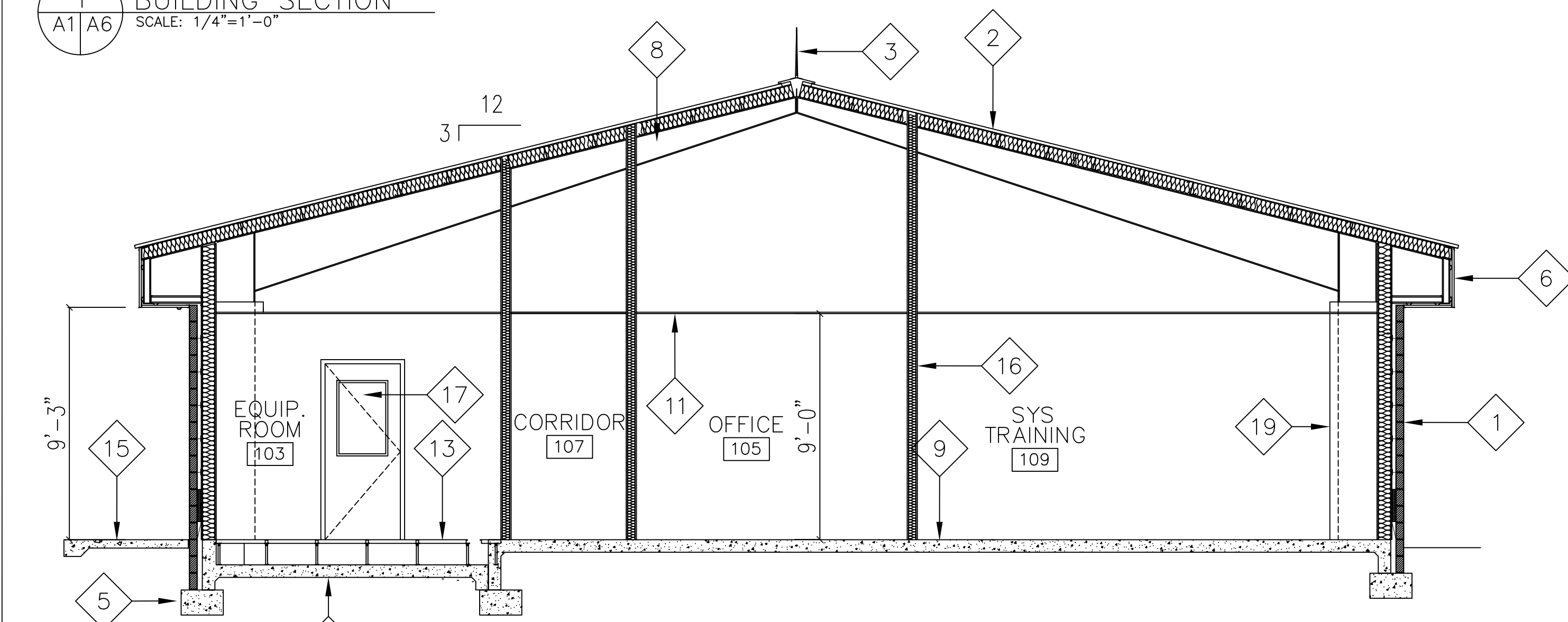


1 BUILDING SECTION
SCALE: 1/4"=1'-0"

3 BUILDING SECTION
SCALE: 1/4"=1'-0"

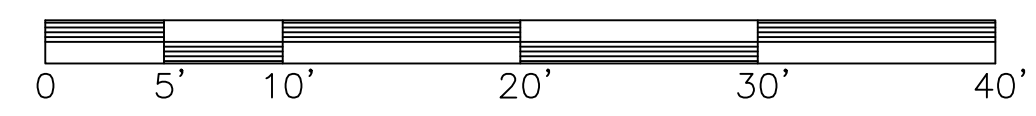


2 BUILDING SECTION
SCALE: 1/4"=1'-0"

4 BUILDING SECTION
SCALE: 1/4"=1'-0"

KEYNOTES: THIS SHEET ONLY.

- 1 PAINTED SPLIT-FACE CMU VENEER TO MATCH ADJACENT BUILDING 91024, 2" AIR SPACE, MEMBRANE AIR AND VAPOR BARRIER OVER 1/2" THICK FIBERGLASS-REINFORCED GYPSUM SHEATHING OVER 6" 16GA GALV. STEEL STUDS AT 16" O.C. WITH 5/8" THICK TYPE 'X' MOLD AND MOISTURE-RESISTANT GYPSUM BOARD, PAINTED. FILL ALL STUD CAVITIES SOLID WITH R-19 BATT INSULATION, FULL HEIGHT OF WALL. TYPICAL.
- 2 PRE-FINISHED STRUCTURAL STANDING SEAM METAL ROOFING, COLOR AND PROFILE TO MATCH ADJACENT BUILDING 91024. TYPICAL.
- 3 LIGHTNING PROTECTION AIR TERMINAL, TYPICAL. SEE ELECTRICAL DOCUMENTS.
- 4 PRE-FINISHED FIXED ALUMINUM WINDOW WITH TINTED, TEMPERED, INSULATED LAMINATED GLASS. WINDOW SYSTEM AND GLAZING SHALL COMPLY WITH AT/FP REQUIREMENTS.
- 5 CONTINUOUS REINFORCED CONCRETE FOOTING, TYPICAL. SEE STRUCTURAL DOCUMENTS.
- 6 PRE-FINISHED STRUCTURAL STANDING SEAM METAL FASCIA PANELS TO MATCH STANDING SEAM METAL ROOFING. TYPICAL.
- 7 GALV. HOLLOW METAL FRAME AND FLUSH INSULATED GALV. HOLLOW METAL DOOR(S), COMPLYING WITH AT/FP REQUIREMENTS, TYPICAL. PAINT TO MATCH DOORS ON ADJACENT BUILDING 91024.
- 8 PRE-ENGINEERED METAL BUILDING SYSTEM FRAME, TYPICAL. SEE PRE-ENGINEERED METAL BUILDING SYSTEM SHOP DRAWINGS AND STRUCTURAL DOCUMENTS.
- 9 6" THICK CONCRETE SLAB OVER 15MIL VAPOR BARRIER OVER 6" (MINIMUM) CAPILLARY WATER BARRIER OVER COMPACTED BASE. SLAB SHALL BE REINFORCED PER STRUCTURAL DOCUMENTS. SEE STRUCTURAL DOCUMENTS AND FINISH SCHEDULE. TYPICAL.
- 10 PRE-ENGINEERED WALL-HUNG METAL CANOPY SYSTEM.
- 11 2'X2' LAY-IN ACOUSTICAL CEILING TILE AND GRID SYSTEM. TYPICAL. SEE FINISH SCHEDULE AND SPECIFICATIONS.
- 12 RECESSED CONCRETE FLOOR SLAB. SEE STRUCTURAL DOCUMENTS.
- 13 COMPUTER ACCESS FLOOR SYSTEM. SEE SPECIFICATIONS.
- 14 FACE OF EXISTING BUILDING 91024. PROTECT FROM DAMAGE DURING EXTENT OF WORK.
- 15 NEW REINFORCED CONCRETE SIDEWALK. SEE CIVIL DOCUMENTS.
- 16 3-5/8" 20GA GALV. STEEL STUDS AT 16" O.C. W/ 5/8" TYPE 'X' GYPSUM BOARD BOTH SIDES AND ALL STUD CAVITIES FILLED SOLID WITH 3" UNFACED SOUND BATT INSULATION. WALLS SHALL MEET STC45 AND EXTEND AND SEAL TO BOTTOM OF ROOF. TYPICAL. SEE FINISH SCHEDULE.
- 17 PRE-FINISHED SOLID CORE WOOD DOOR, COMPLETE WITH ALL REQUIRED HARDWARE, AND PAINTED GHM FRAME. SEE DOOR, HARDWARE, AND FINISH SCHEDULES AND SPECIFICATIONS. DOORS, FRAMES AND HARDWARE SHALL COMPLY WITH STC45.
- 18 PLASTIC LAMINATE-CLAD STORAGE UNIT WITH ADJUSTABLE SHELVES AND ALL REQUIRED HARDWARE. SEE SHEET A5.
- 19 COLUMN BOX-OUT, BEYOND. SEE SHEET A1 AND FINISH SCHEDULE FOR CORNER GUARDS.
- 20 EXISTING RELOCATED GATE AND RE-WORKED FENCING. REWORK EXISTING GATE AND PROVIDE NEW EXTERIOR GRADE EXIT DEVICE (EXIT ONLY) TO SECURE GATE FROM STREET SIDE, AND ALLOW EGRESS FROM BUILDING SIDE. ALL HARDWARE SHALL BE EXTERIOR GRADE/WEATHER-RESISTANT.



DO NOT SCALE DRAWINGS



FINAL - FOR CONSTRUCTION

APP'D	
DESCRIPTION	
DATE	
REV #	
APPROVED	
CHIEF ENGINEER	
APPROVED	
CIVIL ENGINEER	
CONSTRUCT TRAINING FACILITY 2 CWSS BUILDING 91068	
BUILDING SECTIONS	
AIR FORCE SPECIAL OPERATIONS COMMAND 1 SPECIAL OPERATIONS CIVIL ENGINEER SQUADRON HURLBURT FIELD, FLORIDA	
DATE:	14 FEB 2017
DESIGNED BY:	JEF
DRAWN BY:	JEF
BUILDING NO.:	91068
PROJECT NO.:	FETV16-1066
SHEET REF.:	A6
SHEET NO.:	18 OF 48