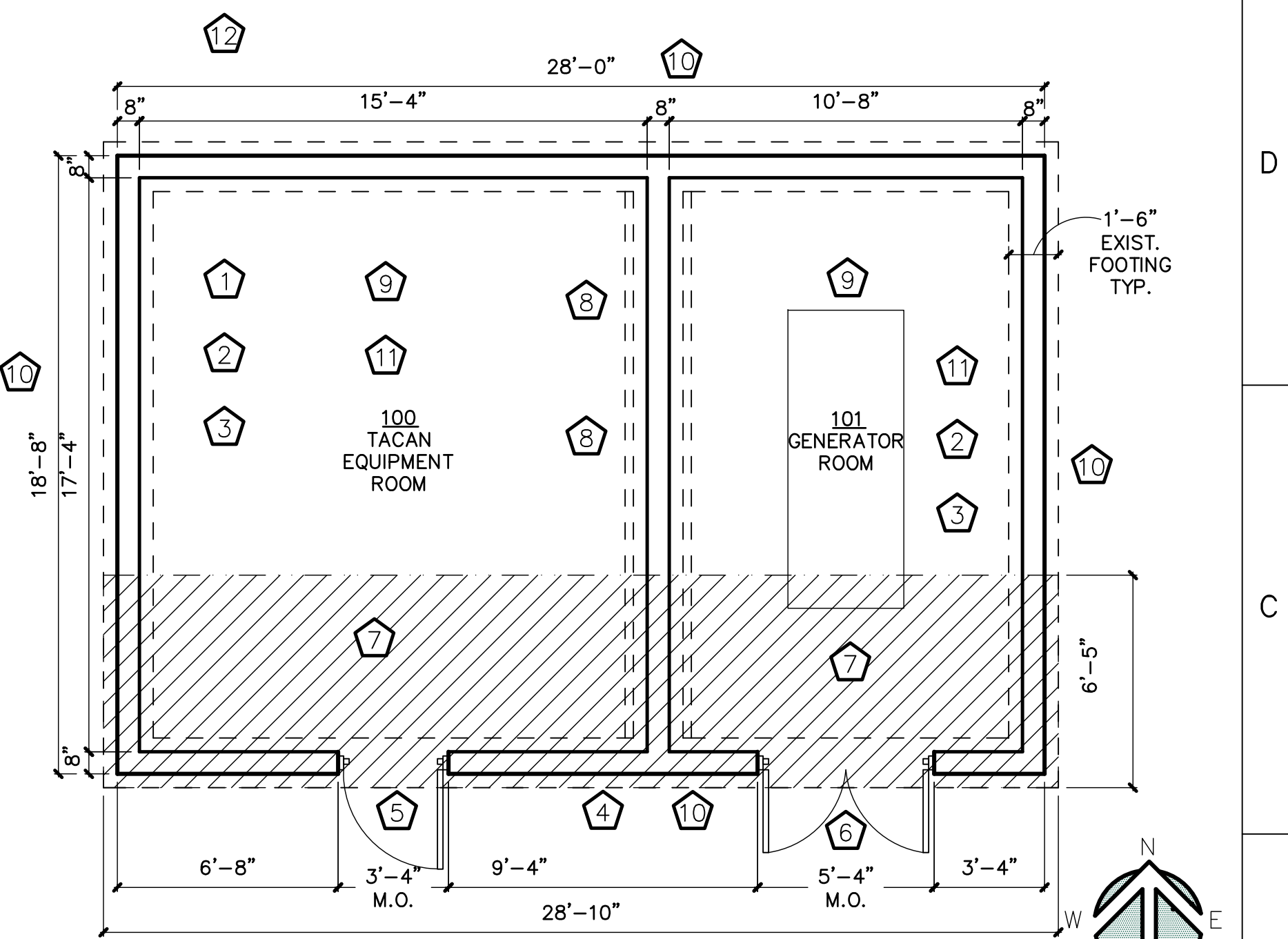
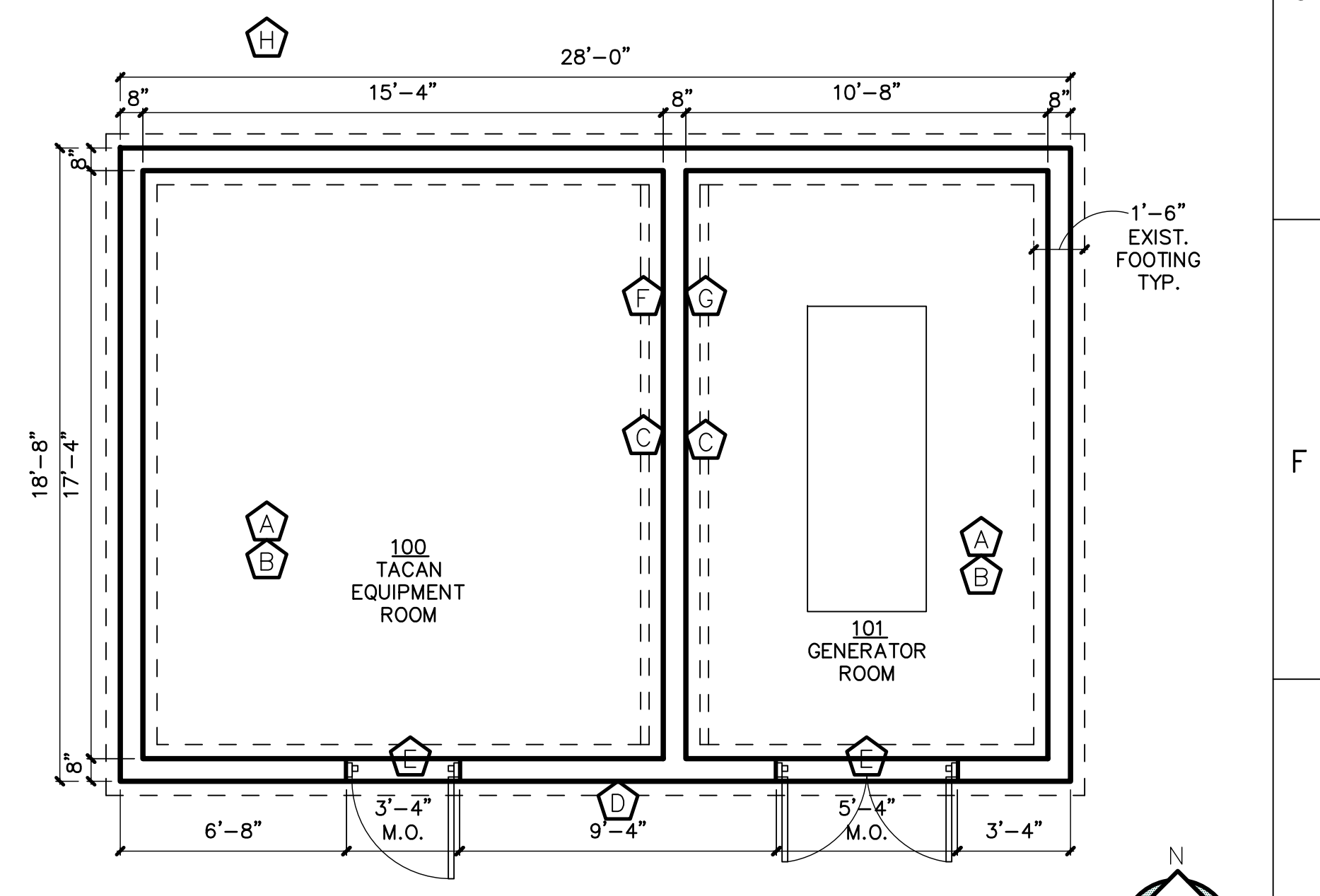


- DEMOLITION KEYED NOTES:**
- (A) REMOVE EXISTING VCT FLOORING AND COVE BASE.
 - (B) REMOVE EXISTING LIGHT SWITCH AND RECEPTACLE COVERS.
 - (C) REMOVE EXISTING 1X WOOD TRIM BOARDS AND/OR ANY BATT INSULATION AT TOP OF EAST WALL.
 - (D) REMOVE EXISTING LIGHT FIXTURES ON SOUTH FAÇADE BETWEEN CANOPIES. SEE EXTERIOR ELEVATION DRAWING FOR LOCATION.
 - (E) REMOVE EXISTING HOLLOW METAL DOORS, FRAMES AND THRESHOLDS.
 - (F) REMOVE TWO (2) ABANDONED METAL WALL LOUVERS IN EAST WALL.
 - (G) REMOVE SHEET METAL COVERS OVER TWO (2) ABANDONED WALL LOUVERS IN WEST WALL.
 - (H) CONTRACTOR TO LIFT EXISTING TRANSFORMER (APPROX. 42'X68') UP AND REMOVE EXISTING TRANSFORMER PAD AND REPLACE WITH VECTRUS SUPPLIED LARGER PRECAST TRANSFORMER PAD.

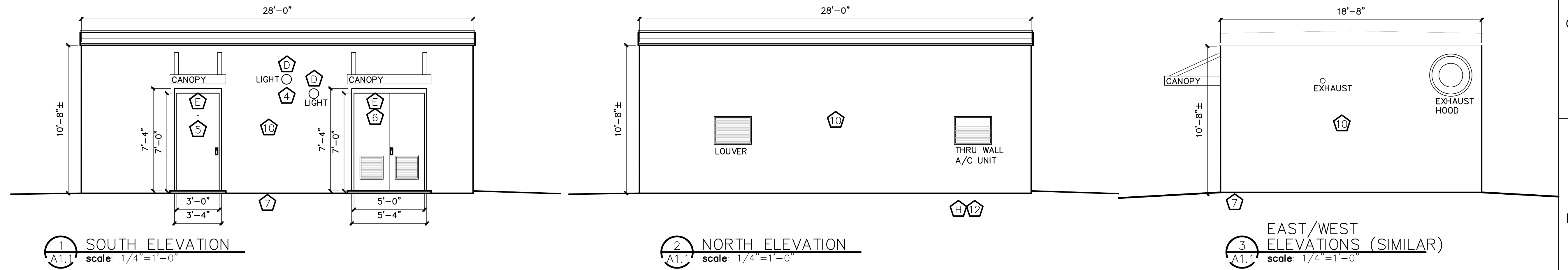
- RENOVATION KEYED NOTES:**
- (1) INSTALL 12'X12" VCT FLOORING EQUAL TO: ARMSTRONG - EXCELON IMPERIAL TEXTURE - INSTALL 6" RUBBER BASE EQUAL TO JOHNSONITE, INC. TRADITIONAL RUBBER WALL BASE. ALL COLORS TO BE FROM MANUFACTURER'S STANDARD COLORS AND DETERMINED BY CONTRACTING OFFICER.
 - (2) PROVIDE AND INSTALL NEW LIGHT SWITCH AND RECEPTACLE COVER PLATES.
 - (3) INSTALL VAPOR BARRIER AT TOP OF ALL CMU WALLS, FILL VOIDS WITH FOAM INSULATION, AND THEN ATTACH 1X WOOD TRIM BOARDS AROUND ENTIRE PERIMETER OF ROOM. NOTCH AND TAPER WOOD TRIM AS REQUIRED TO CONFORM TO ROOF SLOPE AND ROOFING STRUCTURE. PAINT TO MATCH. SEE DRAWINGS FOR DETAILS.
 - (4) PROVIDE AND INSTALL ONE (1) NEW EXTERIOR LIGHT FIXTURE ON SOUTH FAÇADE. LED LIGHT FIXTURE WITH PHOTOCELL CONTROLS - EQUAL TO: ATLAS LIGHT PRODUCTS - ATLAS LED WALL LIGHT - MODEL # WLM43LED - SEE DRAWING FOR LOCATION.
 - (5) PROVIDE AND INSTALL ONE (1) HOLLOW METAL DOOR WITH VIEW HOLE, ONE (1) HOLLOW METAL FRAME WITH WEATHER-STRIPPING ALL AROUND, AND HEAVY DUTY DOOR HARDWARE TO INCLUDE CONTINUOUS HINGE, 3/4" HIGH STAINLESS STEEL KICK PLATE, MORTISED LEVER LOCKSET WITH HEAVY DUTY WEATHERIZED CYPHER LOCKS ON ALL NEW EXTERIOR DOORS, AND HEAVY DUTY DOOR CLOSER WITH STAINLESS STEEL METAL COVER PLATE. METAL THRESHOLD - EQUAL TO: PEMKO COMMERCIAL SADDLE THRESHOLD MODEL # 2748A WITH THRESHOLD STOP STRIP MODEL # 1842_S.
 - (6) PROVIDE AND INSTALL TWO (2) HOLLOW METAL DOORS WITH LOUVERS AND BUG SCREENING, ONE (1) HOLLOW METAL FRAME WITH WEATHER-STRIPPING ALL AROUND, AND HEAVY DUTY DOOR HARDWARE TO INCLUDE CONTINUOUS HINGE, 3/4" HIGH STAINLESS STEEL KICK PLATE, MORTISED LEVER LOCKSET WITH HEAVY DUTY WEATHERIZED CYPHER LOCKS ON ALL NEW EXTERIOR DOORS, AND HEAVY DUTY DOOR CLOSER WITH STAINLESS STEEL METAL COVER PLATES. METAL THRESHOLD - EQUAL TO: PEMKO COMMERCIAL SADDLE THRESHOLD MODEL # 2748A WITH THRESHOLD STOP STRIP MODEL # 1842_S.
 - (7) FOUNDATION CONCRETE LIFTING ('MUDJACKING' / 'SLAB JACKING') STRUCTURE WITH FOAM FOUNDATION FILL TO SHORE UP, HALT, REPAIR SETTLING FOUNDATION AND THE HOLLOW UNDER SLAB AND FOOTINGS. SEE DRAWINGS FOR AS-BUILT STRUCTURAL DETAILS AND EXTENT OF 'MUDJACKING'.
 - (8) INFILL CMU BLOCK WALL WHERE ABANDONED THRU WALL LOUVERS WERE LOCATED ON EAST WALL. PREP FOR NEW PAINT FINISH. SEE DRAWINGS FOR LOCATION.
 - (9) RE-POINT/RE-GROUT/SEAL ALL CMU JOINTS AFTER FOUNDATION / SLAB JACKING IS COMPLETE. PAINT ALL EXISTING PAINTED SURFACES PER MANUFACTURE'S RECOMMENDATIONS (INCLUDING CEMENTITIOUS FIBER ROOF INSULATION AND ROOF JOISTS). COLORS TO BE DETERMINED FROM STANDARD COLOR SELECTION. PAINT AROUND ALL FIXTURES, SIGNAGE, ELECTRICAL PANELS, EMERGENCY SHUT-OFFS ETC.
 - (10) RE-POINT/RE-GROUT/SEAL ALL CMU JOINTS AFTER FOUNDATION / SLAB JACKING IS COMPLETE. PAINT ALL EXISTING PAINTED CMU SURFACES PER MANUFACTURE'S RECOMMENDATIONS. COLORS TO BE DETERMINED FROM STANDARD COLOR SELECTION. PAINT AROUND ALL FIXTURES, SIGNAGE, ELECTRICAL PANELS, EMERGENCY SHUT-OFFS ETC.
 - (11) REMOVE ALL LIGHT FIXTURE LENS, CLEAN AND REINSTALL.
 - (12) CONTRACTOR TO LIFT EXISTING TRANSFORMER (APPROX. 42'X68') UP AND REMOVE EXISTING TRANSFORMER PAD AND REPLACE WITH VECTRUS SUPPLIED LARGER PRECAST TRANSFORMER PAD.

****CONTRACTOR TO FIELD VERIFY ALL DIMENSIONS.****



REVISION	DATE	DRAWN	APPROVED
UNITED STATES AIR FORCE			
KEESLER AIR FORCE BASE			
BLDG. 6655 MISSISSIPPI			
OFFICE OF CIVIL ENGINEERS			
REPAIR TACAN STRUCTURE			
FOUNDATION (BLDG. 6655)			
W.O.# 77297			
SUBMITTED: D. KINMAN (Chief of Contracts Design)	DESIGNED: M. BAIN	CHECKED: A. MARASCA	DATE: 15 NOV 2017
RECOMMENDED: A. MARASCA (Chief of Engineering)	SCALE: VARIOUS	PROJECT NUMBER: MAHG15-1040	FACILITY NUMBER: 6655
DRAWING NUMBER: A1.0		SHEET 1 OF 2	

****CONTRACTOR TO FIELD VERIFY ALL DIMENSIONS.****



1 SOUTH ELEVATION
A1.1 scale: 1/4"=1'-0"

2 NORTH ELEVATION
A1.1 scale: 1/4"=1'-0"

3 EAST/WEST ELEVATIONS (SIMILAR)
A1.1 scale: 1/4"=1'-0"

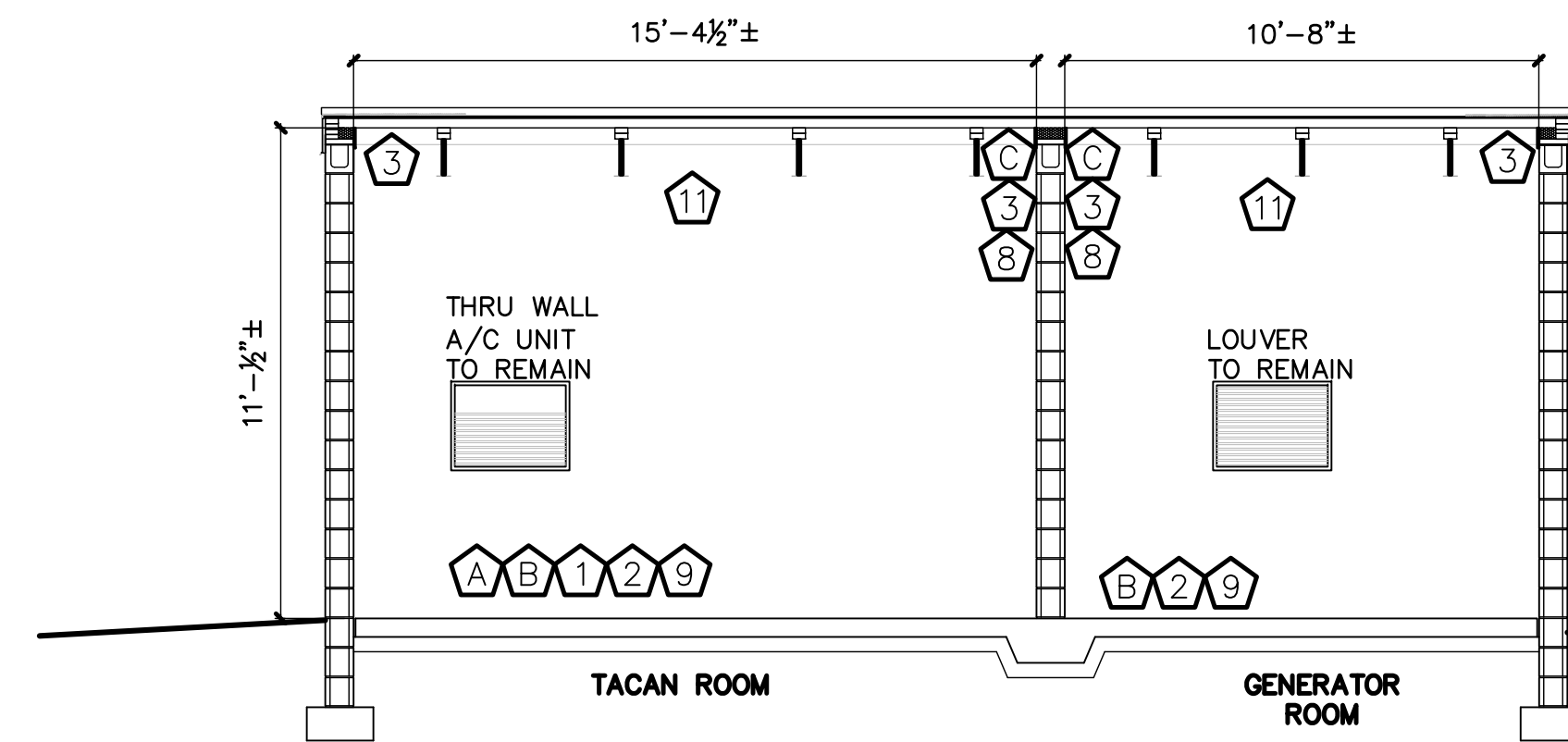
CONTRACTOR TO FIELD VERIFY ALL DIMENSIONS.

DEMOLITION KEYED NOTES:

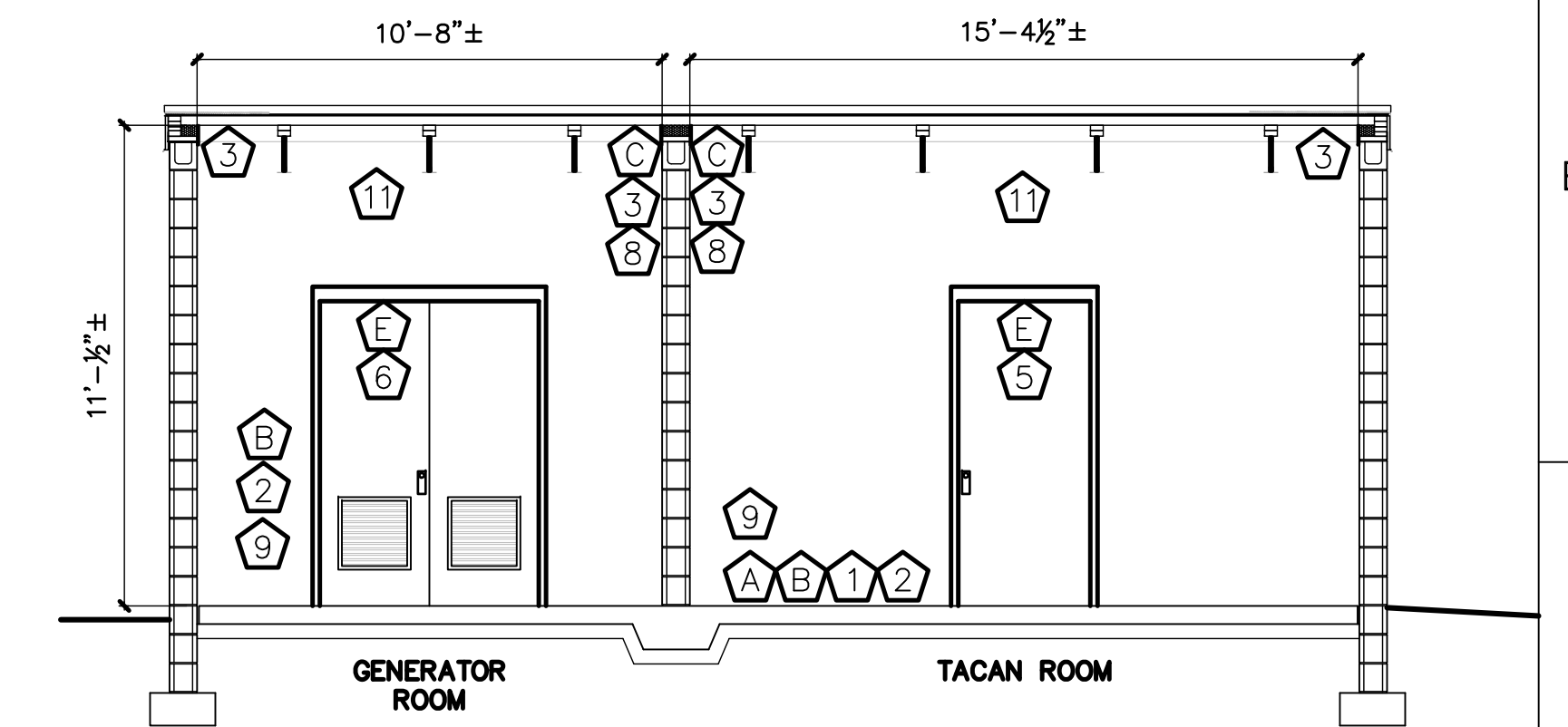
- A REMOVE EXISTING VCT FLOORING AND COVE BASE.
- B REMOVE EXISTING LIGHT SWITCH AND RECEPTACLE COVERS.
- C REMOVE EXISTING 1X WOOD TRIM BOARDS AND/OR ANY BATT INSULATION AT TOP OF EAST WALL.
- D REMOVE EXISTING LIGHT FIXTURES ON SOUTH FAÇADE BETWEEN CANOPIES. SEE EXTERIOR ELEVATION DRAWING FOR LOCATION.
- E REMOVE EXISTING HOLLOW METAL DOORS, FRAMES AND THRESHOLDS.
- F REMOVE TWO (2) ABANDONED METAL WALL LOUVERS IN EAST WALL.
- G REMOVE SHEET METAL COVERS OVER TWO (2) ABANDONED WALL LOUVERS IN WEST WALL.
- H CONTRACTOR TO LIFT EXISTING TRANSFORMER (APPROX. 42'X68") UP AND REMOVE EXISTING TRANSFORMER PAD AND REPLACE WITH VECTRUS SUPPLIED LARGER PRECAST TRANSFORMER PAD.

RENOVATION KEYED NOTES:

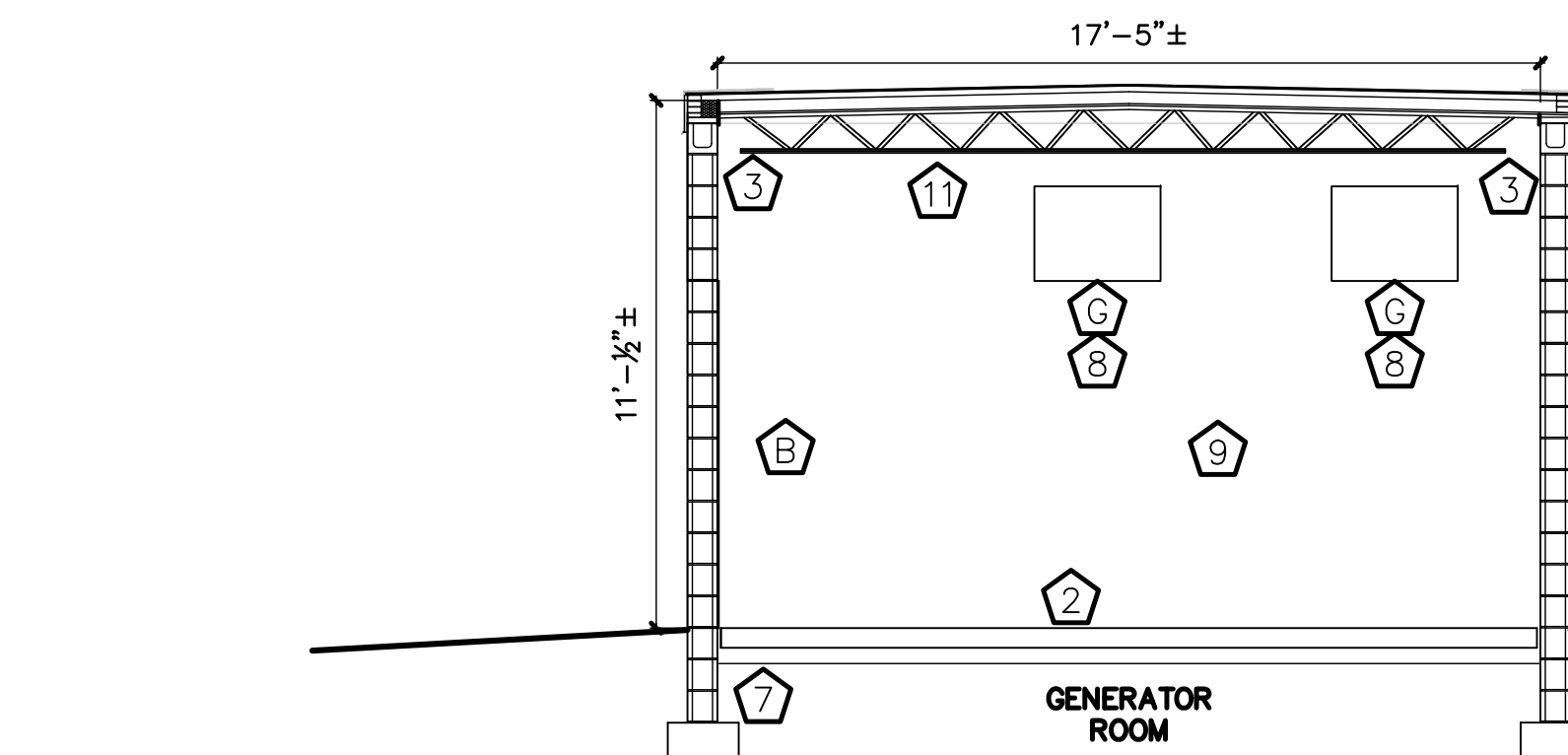
- 1 INSTALL 12'X12" VCT FLOORING EQUAL TO: ARMSTRONG - EXCELON IMPERIAL TEXTURE - INSTALL 6" RUBBER BASE EQUAL TO JOHNSONITE, INC. TRADITIONAL RUBBER WALL BASE. ALL COLORS TO BE FROM MANUFACTURER'S STANDARD COLORS AND DETERMINED BY CONTRACTING OFFICER.
- 2 PROVIDE AND INSTALL NEW LIGHT SWITCH AND RECEPTACLE COVER PLATES.
- 3 INSTALL VAPOR BARRIER AT TOP OF ALL CMU WALLS, FILL VOIDS WITH FOAM INSULATION, AND THEN ATTACH 1X WOOD TRIM BOARDS AROUND ENTIRE PERIMETER OF ROOM. NOTCH AND TAPER WOOD TRIM AS REQUIRED TO CONFORM TO ROOF SLOPE AND ROOFING STRUCTURE. PAINT TO MATCH. SEE DRAWINGS FOR DETAILS.
- 4 PROVIDE AND INSTALL ONE (1) NEW EXTERIOR LIGHT FIXTURE ON SOUTH FAÇADE. LED LIGHT FIXTURE WITH PHOTOCELL CONTROLS - EQUAL TO: ATLAS LIGHT PRODUCTS - ATLAS LED WALL LIGHT - MODEL # WLM43LED - SEE DRAWING FOR LOCATION.
- 5 PROVIDE AND INSTALL ONE (1) HOLLOW METAL DOOR WITH VIEW HOLE, ONE (1) HOLLOW METAL FRAME WITH WEATHER-STRIPPING ALL AROUND, AND HEAVY DUTY DOOR HARDWARE TO INCLUDE CONTINUOUS HINGE, 34" HIGH STAINLESS STEEL KICK PLATE, MORTISED LEVER LOCKSET WITH HEAVY DUTY WEATHERIZED CYPHER LOCKS ON ALL NEW EXTERIOR DOORS, AND HEAVY DUTY DOOR CLOSER WITH STAINLESS STEEL METAL COVER PLATE. METAL THRESHOLD - EQUAL TO: PEMKO COMMERCIAL SADDLE THRESHOLD MODEL # 2748A WITH THRESHOLD STOP STRIP MODEL # 1842_S.
- 6 PROVIDE AND INSTALL TWO (2) HOLLOW METAL DOORS WITH LOUVERS AND BUG SCREENING, ONE (1) HOLLOW METAL FRAME WITH WEATHER-STRIPPING ALL AROUND, AND HEAVY DUTY DOOR HARDWARE TO INCLUDE CONTINUOUS HINGE, 34" HIGH STAINLESS STEEL KICK PLATE, MORTISED LEVER LOCKSET WITH HEAVY DUTY WEATHERIZED CYPHER LOCKS ON ALL NEW EXTERIOR DOORS, AND HEAVY DUTY DOOR CLOSER WITH STAINLESS STEEL METAL COVER PLATES. METAL THRESHOLD - EQUAL TO: PEMKO COMMERCIAL SADDLE THRESHOLD MODEL # 2748A WITH THRESHOLD STOP STRIP MODEL # 1842_S.
- 7 FOUNDATION CONCRETE LIFTING ('MUDJACKING' / 'SLAB JACKING') STRUCTURE WITH FOAM FOUNDATION FILL TO SHORE UP, HALT, REPAIR SETTLING FOUNDATION AND THE HOLLOW UNDER SLAB AND FOOTINGS. SEE DRAWINGS FOR AS-BUILT STRUCTURAL DETAILS AND EXTENT OF 'MUDJACKING'.
- 8 INFILL CMU BLOCK WALL WHERE ABANDONED THRU WALL LOUVERS WERE LOCATED ON EAST WALL. PREP FOR NEW PAINT FINISH. SEE DRAWINGS FOR LOCATION.
- 9 RE-POINT/RE-GROUT/SEAL ALL CMU JOINTS AFTER FOUNDATION / SLAB JACKING IS COMPLETE. PAINT ALL EXISTING PAINTED SURFACES PER MANUFACTURE'S RECOMMENDATIONS (INCLUDING CEMENTITIOUS FIBER ROOF INSULATION AND ROOF JOISTS). COLORS TO BE DETERMINED FROM STANDARD COLOR SELECTION. PAINT AROUND ALL FIXTURES, SIGNAGE, ELECTRICAL PANELS, EMERGENCY SHUT-OFFS ETC.
- 10 RE-POINT/RE-GROUT/SEAL ALL CMU JOINTS AFTER FOUNDATION / SLAB JACKING IS COMPLETE. PAINT ALL EXISTING PAINTED CMU SURFACES PER MANUFACTURE'S RECOMMENDATIONS. COLORS TO BE DETERMINED FROM STANDARD COLOR SELECTION. PAINT AROUND ALL FIXTURES, SIGNAGE, ELECTRICAL PANELS, EMERGENCY SHUT-OFFS ETC.
- 11 REMOVE ALL LIGHT FIXTURE LENS, CLEAN AND REINSTALL.
- 12 CONTRACTOR TO LIFT EXISTING TRANSFORMER (APPROX. 42'X68") UP AND REMOVE EXISTING TRANSFORMER PAD AND REPLACE WITH VECTRUS SUPPLIED LARGER PRECAST TRANSFORMER PAD.



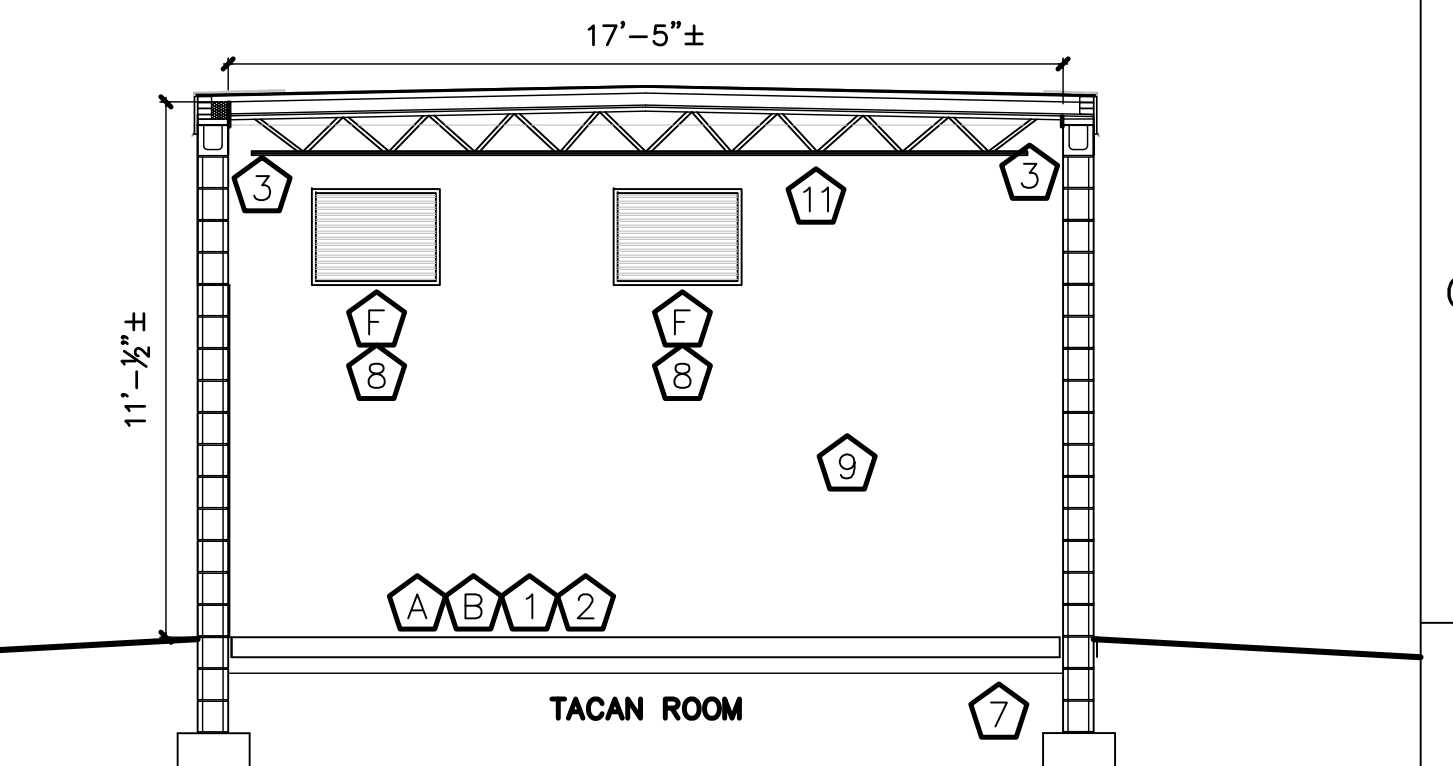
4 LONGITUDINAL BLDG. SECTION AND NORTH INTERIOR ELEVATIONS
A1.1 scale: 1/4"=1'-0"



5 LONGITUDINAL BLDG. SECTION AND SOUTH INTERIOR ELEVATIONS
A1.1 scale: 1/4"=1'-0"



6 TRANSVERSE BLDG. SECTION AND EAST INTERIOR ELEVATION
A1.0 scale: 1/4"=1'-0"



7 TRANSVERSE BLDG. SECTION AND WEST INTERIOR ELEVATION
A1.0 scale: 1/4"=1'-0"

CONTRACTOR TO FIELD VERIFY ALL DIMENSIONS.

REVISION	DATE	DRAWN	APPROVED
UNITED STATES AIR FORCE KEESLER AIR FORCE BASE <small>BLDG. 6655 MISSISSIPPI</small> OFFICE OF CIVIL ENGINEERS			
REPAIR TACAN STRUCTURE FOUNDATION (BLDG. 6655) W.O.# 77297			
SUBMITTED: D. KINMAN <small>(Chief of Contracts Design)</small>	RECOMMENDED: A. MARASCA <small>(Chief of Engineering)</small>	FACILITY NUMBER: 6655	
DESIGNED: M. BAIN	CHECKED: A. MARASCA	SCALE: VARIOUS	DRAWING NUMBER: A1.1
DRAWN: MNB	DATE: 15 NOV 2017	PROJECT NUMBER: MAHG15-1040	SHEET <u>2</u> OF <u>2</u>