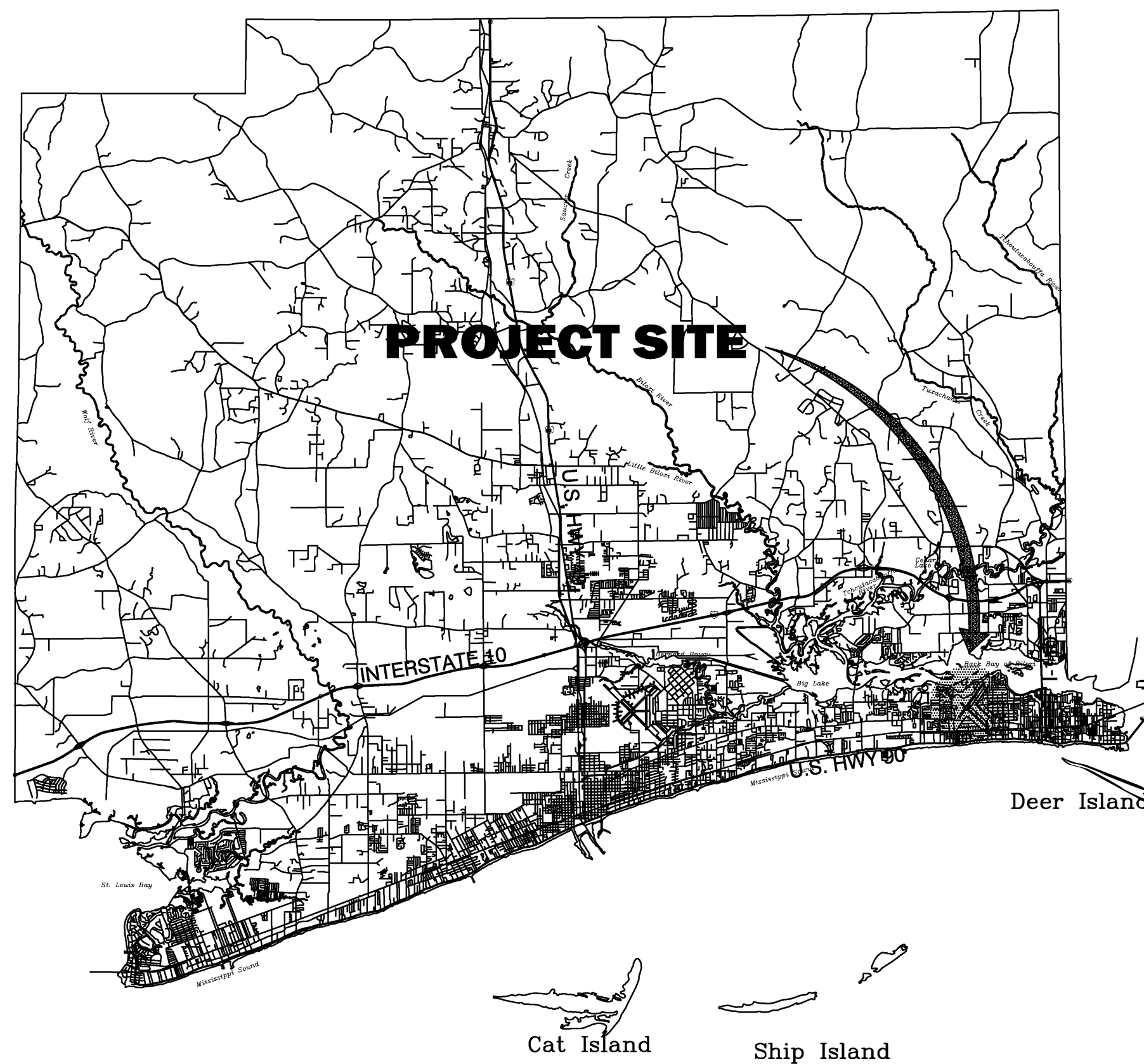


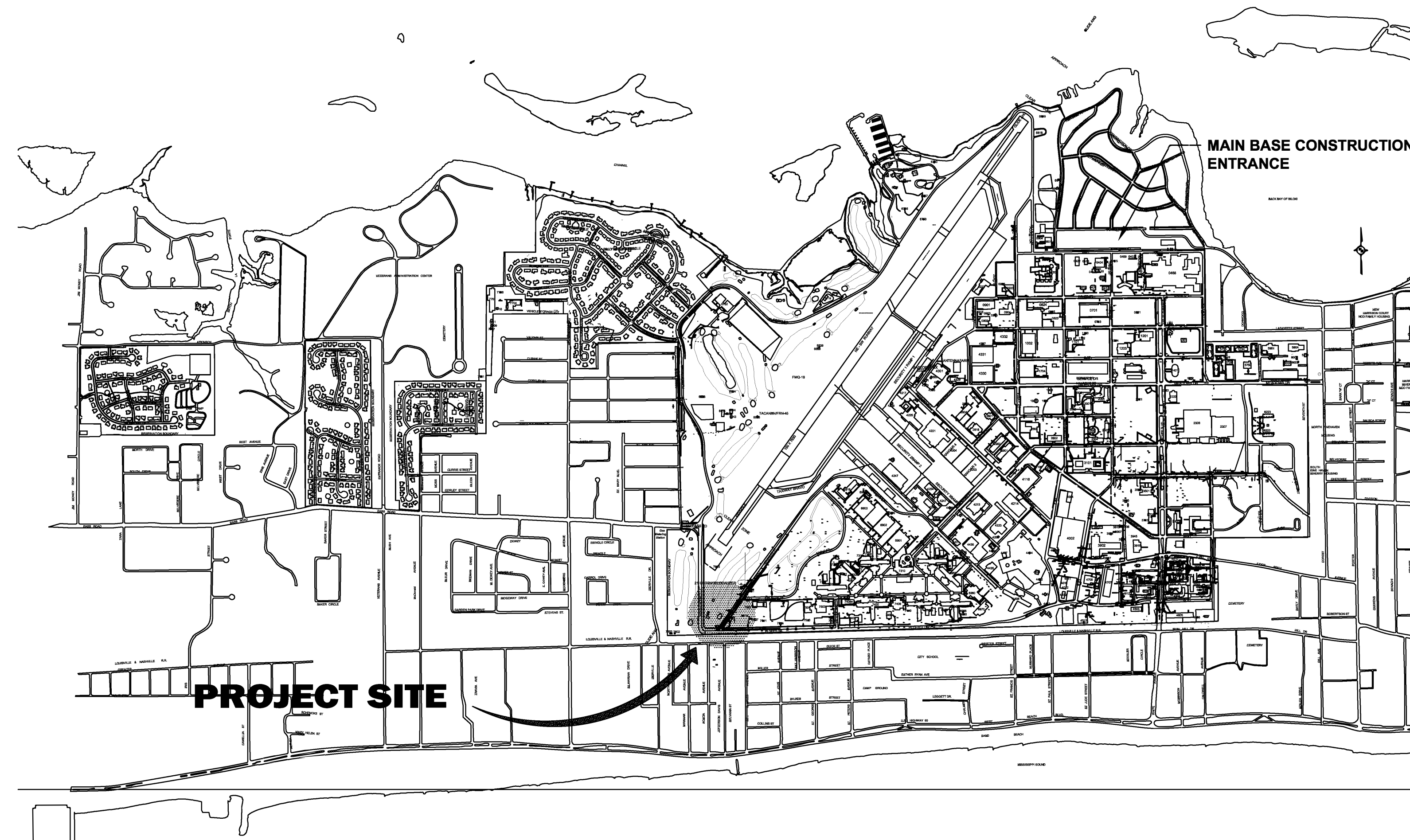
REPAIR HERCULES STREET

MAHG 17-1010

KEESLER AFB, MISSISSIPPI NOVEMBER 2017



HARRISON COUNTY, MS
VICINITY MAP
NOT TO SCALE



KEESLER AFB, MS
LOCATION PLAN, HERCULES STREET
NOT TO SCALE

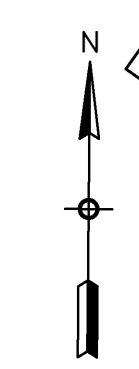
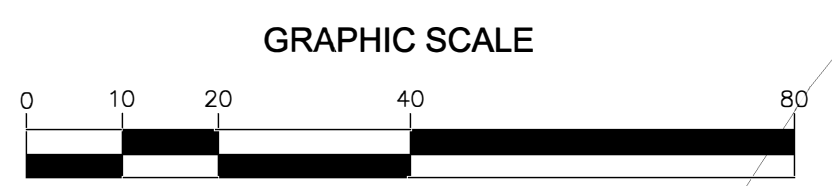
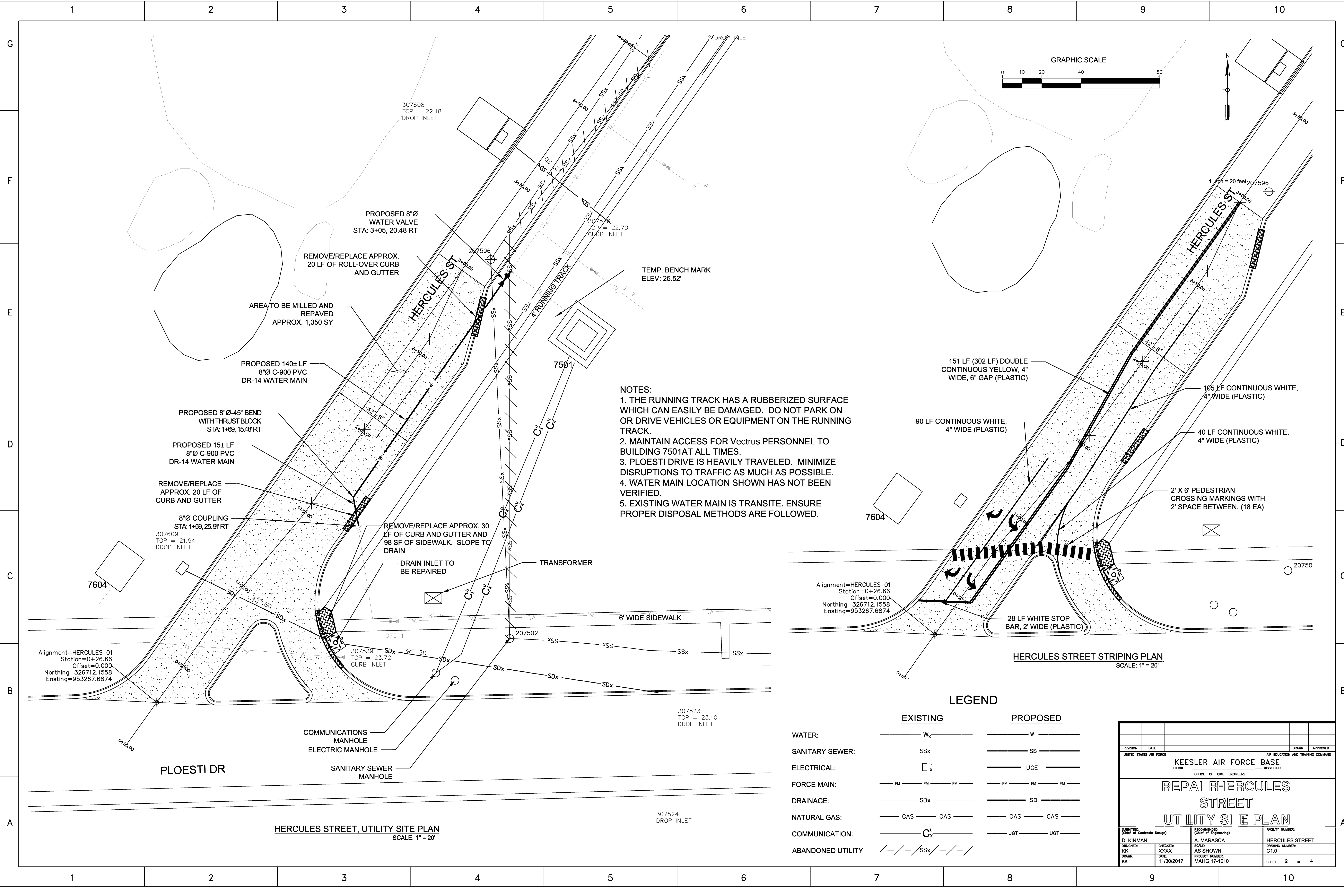
UTILITY COMPANIES

WATER & SEWER	Vectrus EMCS	228.377.7771
ELECTRIC	MISSISSIPPI POWER	800.487.3725
NATURAL GAS	CENTERPOINT ENERGY	228.896.7500
TELEPHONE	ATT	228.285.8011
CABLE TELEVISION	CABLE ONE	228.374.5900
UTILITIES	MISSISSIPPI ONE-CALL	800.227.6477

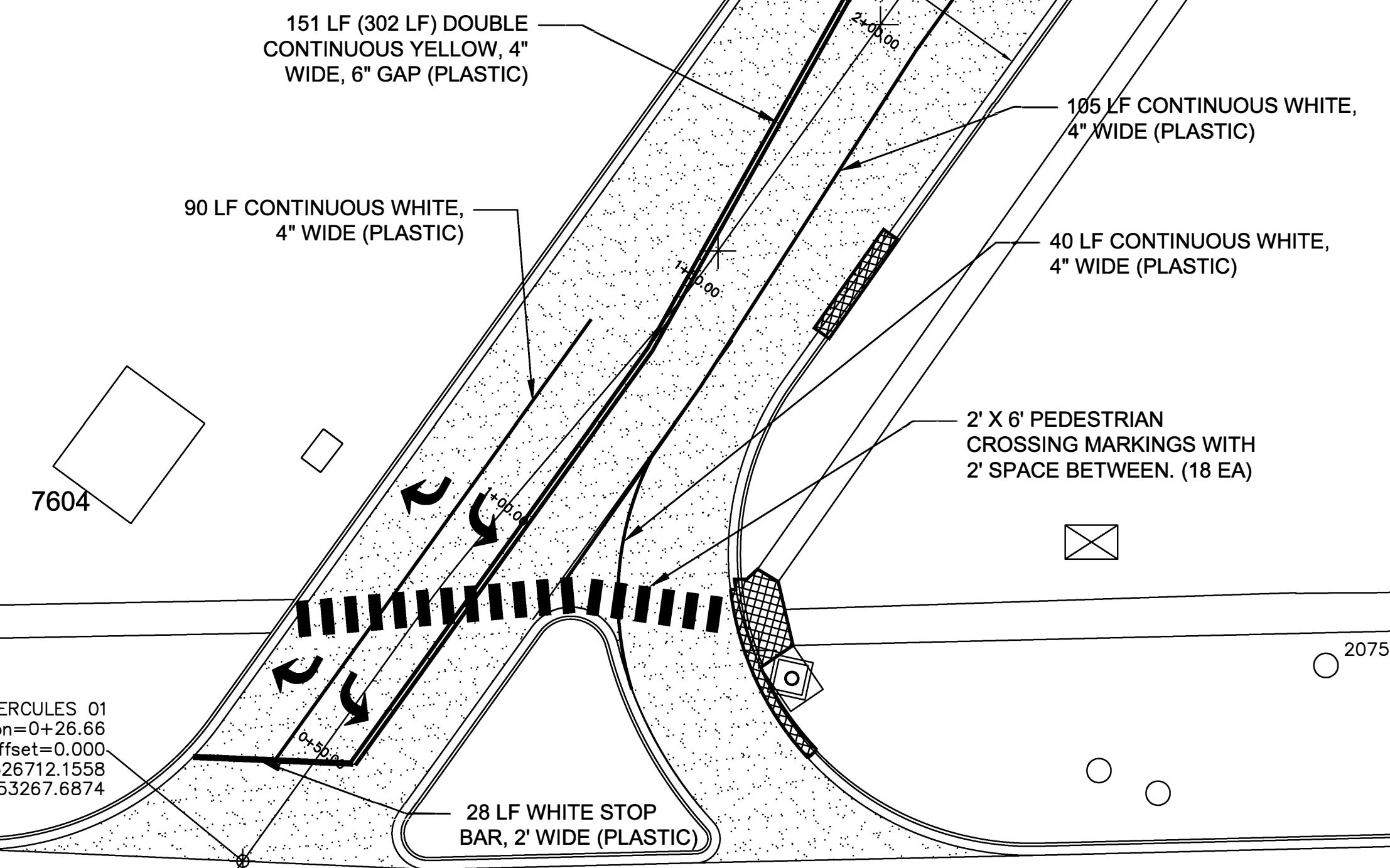
INDEX OF DRAWINGS

- 1 TITLE SHEET
- 2 PLAN VIEW/STRIPING PLAN
- 3 TRAFFIC CONTROL PLAN/DRAINAGE DETAILS
- 4 STANDARD DETAILS

REVISION	DATE	DRAWN	APPROVED
UNITED STATES AIR FORCE		AIR EDUCATION AND TRAINING COMMAND	
KEESLER AIR FORCE BASE <small>MISSISSIPPI</small>			
OFFICE OF CIVIL ENGINEERS REPAIR HERCULES STREET TITLE SHEET			
SUBMITTED: D. KINMAN DESIGNED: KK DRAWN: KK	RECOMMENDED: (Chief of Contracts Design) CHECKED: XXXXX DATE: 11/30/2017	RECOMMENDED: (Chief of Engineering) A. MARASCA SCALE: AS SHOWN PROJECT NUMBER: MAHG 17-1010	FACILITY NUMBER: HERCULES STREET DRAWING NUMBER: T1.0 SHEET 1 of 4



- NOTES:**
1. THE RUNNING TRACK HAS A RUBBERIZED SURFACE WHICH CAN EASILY BE DAMAGED. DO NOT PARK ON OR DRIVE VEHICLES OR EQUIPMENT ON THE RUNNING TRACK.
 2. MAINTAIN ACCESS FOR Vectrus PERSONNEL TO BUILDING 7501AT ALL TIMES.
 3. PLOESTI DRIVE IS HEAVILY TRAVELED. MINIMIZE DISRUPTIONS TO TRAFFIC AS MUCH AS POSSIBLE.
 4. WATER MAIN LOCATION SHOWN HAS NOT BEEN VERIFIED.
 5. EXISTING WATER MAIN IS TRANSITE. ENSURE PROPER DISPOSAL METHODS ARE FOLLOWED.



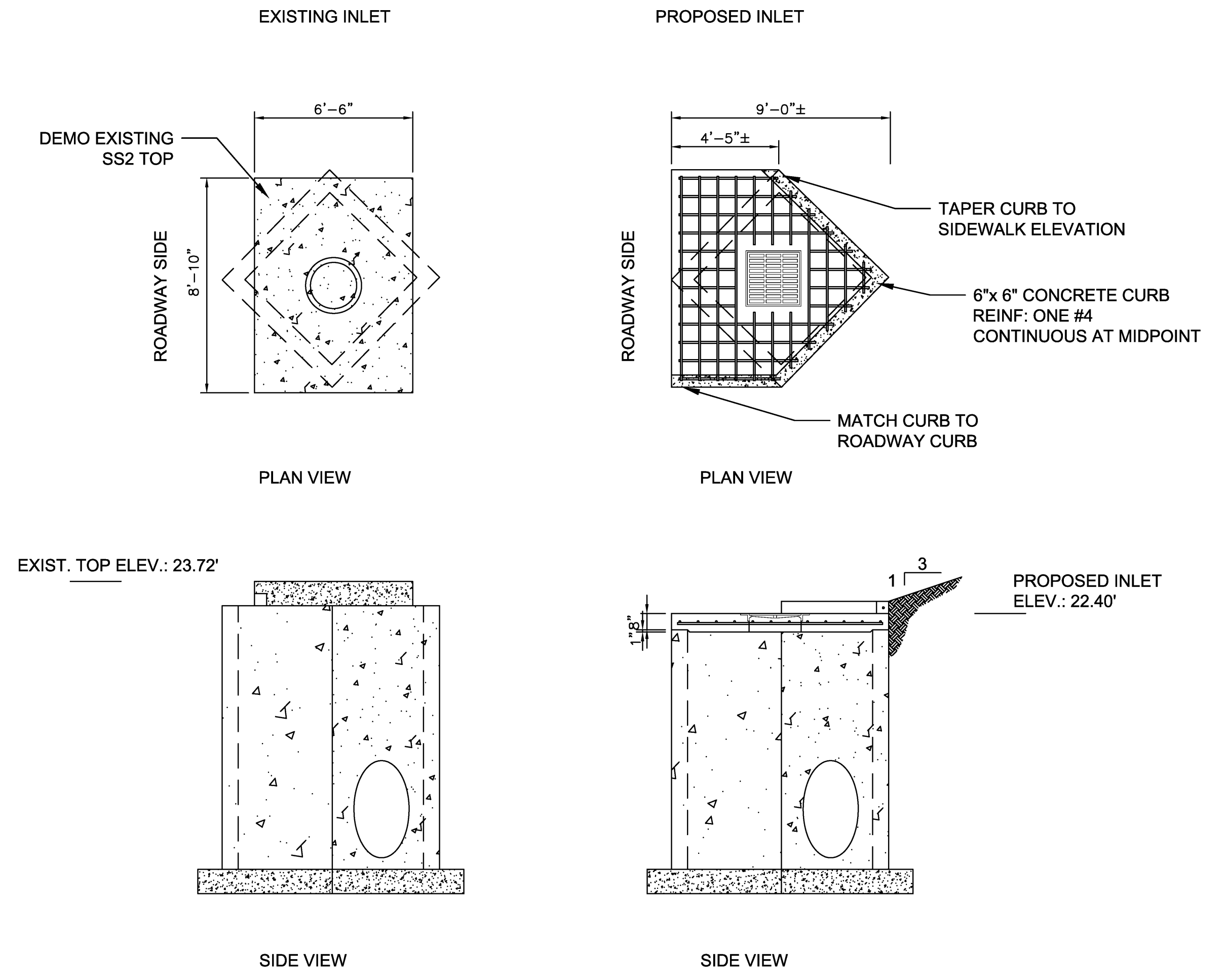
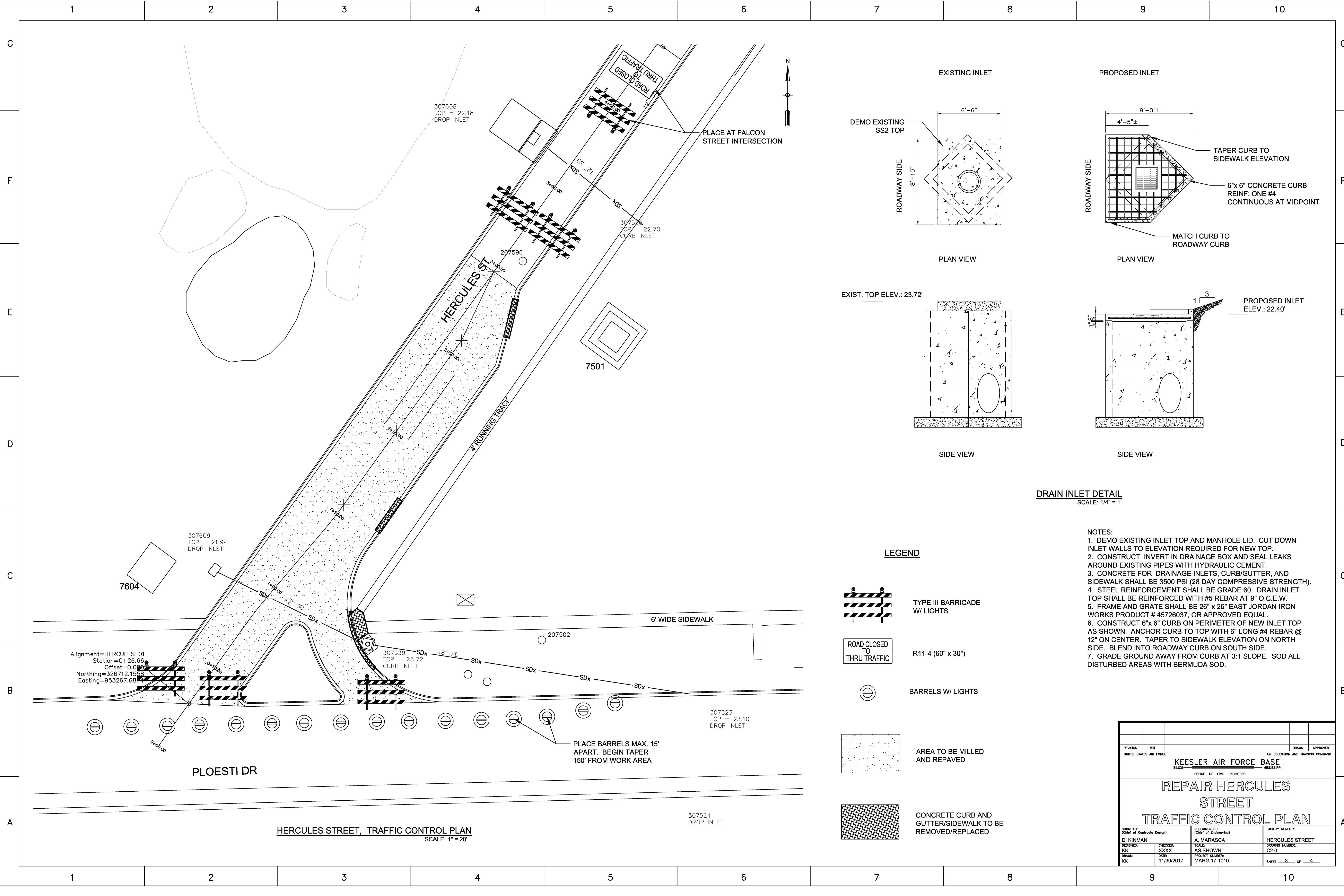
HERCULES STREET STRIPING PLAN
SCALE: 1" = 20'

LEGEND

	EXISTING	PROPOSED
WATER:	W _x	W
SANITARY SEWER:	SS _x	SS
ELECTRICAL:	E _x	UGE
FORCE MAIN:	FM	FM
DRAINAGE:	SD _x	SD
NATURAL GAS:	GAS	GAS
COMMUNICATION:	C _x	UGT
ABANDONED UTILITY	SS _x	

HERCULES STREET, UTILITY SITE PLAN
SCALE: 1" = 20'

REVISION	DATE	DESIGN	APPROVED
UNITED STATES AIR FORCE		AIR EDUCATION AND TRAINING COMMAND	
KEESLER AIR FORCE BASE			
OFFICE OF CIVIL ENGINEERS			
REPAIR HERCULES STREET			
UTILITY SITE PLAN			
SUBMITTED: D. KINMAN (Chief of Contracts Design)	CHECKED: XXXXX	RECOMMENDED: A. MARASCA (Chief of Engineering)	FACILITY NUMBER: HERCULES STREET
DRAWN: KK	DATE: 11/30/2017	SCALE: AS SHOWN	DRAWING NUMBER: C1.0
PROJECT NUMBER: MAHG 17-1010		SHEET 2 of 4	



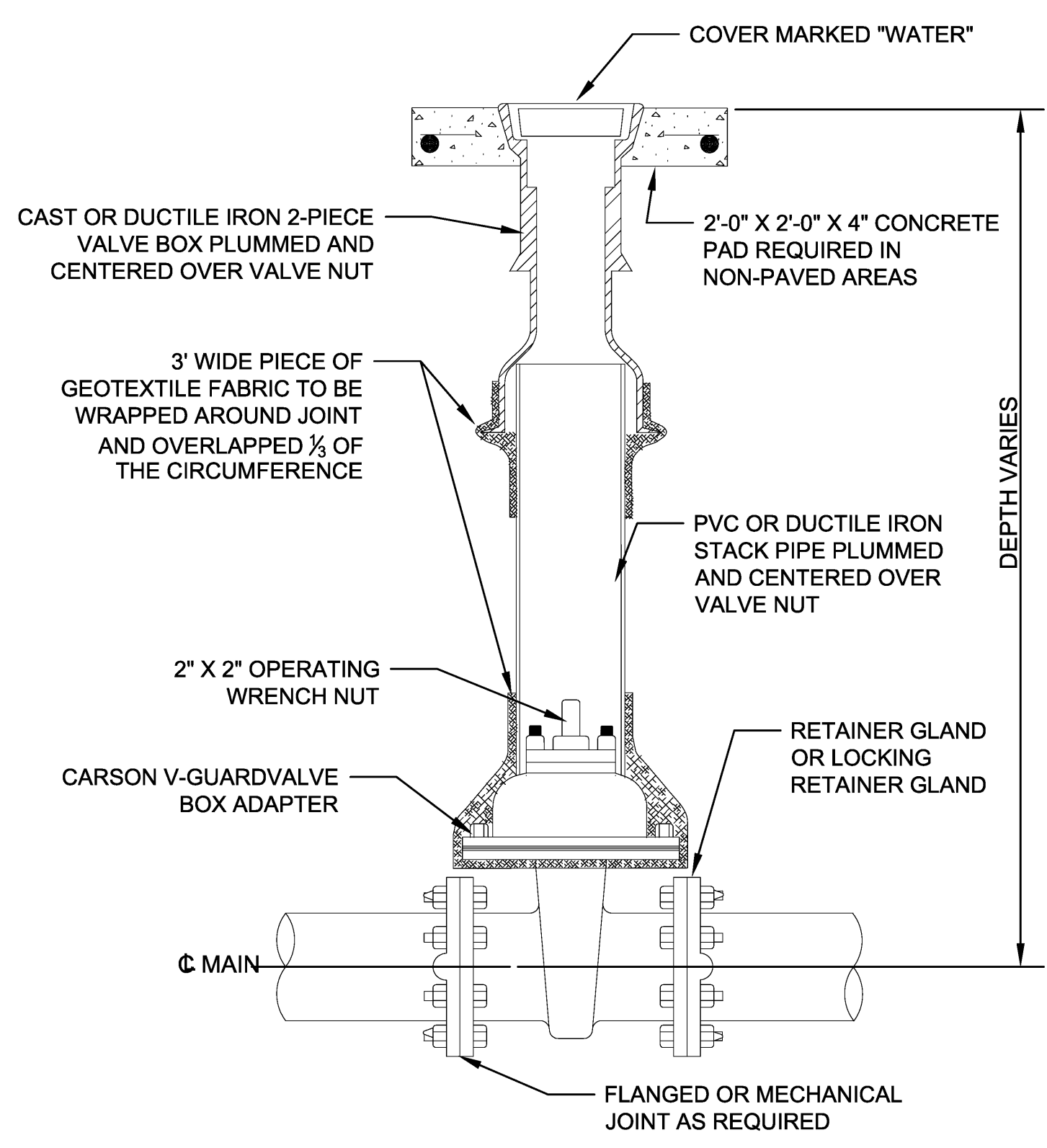
DRAIN INLET DETAIL
SCALE: 1/4" = 1'

LEGEND

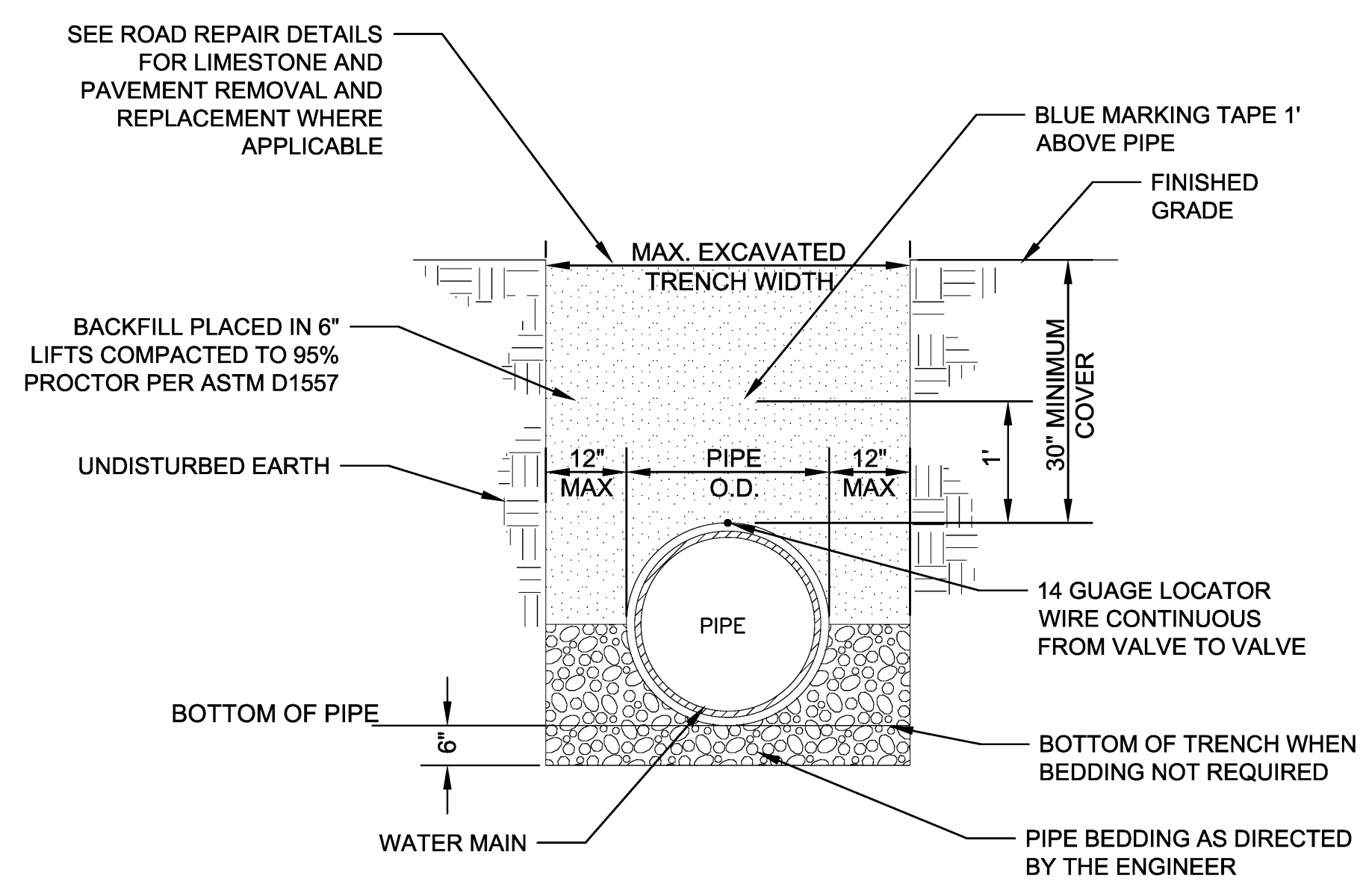
- TYPE III BARRICADE W/ LIGHTS
- ROAD CLOSED TO THRU TRAFFIC
- BARRELS W/ LIGHTS
- AREA TO BE MILLED AND REPAVED
- CONCRETE CURB AND GUTTER/SIDEWALK TO BE REMOVED/REPLACED

- NOTES:**
1. DEMO EXISTING INLET TOP AND MANHOLE LID. CUT DOWN INLET WALLS TO ELEVATION REQUIRED FOR NEW TOP.
 2. CONSTRUCT INVERT IN DRAINAGE BOX AND SEAL LEAKS AROUND EXISTING PIPES WITH HYDRAULIC CEMENT.
 3. CONCRETE FOR DRAINAGE INLETS, CURB/GUTTER, AND SIDEWALK SHALL BE 3500 PSI (28 DAY COMPRESSIVE STRENGTH).
 4. STEEL REINFORCEMENT SHALL BE GRADE 60. DRAIN INLET TOP SHALL BE REINFORCED WITH #5 REBAR AT 9" O.C.E.W.
 5. FRAME AND GRATE SHALL BE 26" x 26" EAST JORDAN IRON WORKS PRODUCT # 45726037, OR APPROVED EQUAL.
 6. CONSTRUCT 6"x 6" CURB ON PERIMETER OF NEW INLET TOP AS SHOWN. ANCHOR CURB TO TOP WITH 6" LONG #4 REBAR @ 12" ON CENTER. TAPER TO SIDEWALK ELEVATION ON NORTH SIDE. BLEND INTO ROADWAY CURB ON SOUTH SIDE.
 7. GRADE GROUND AWAY FROM CURB AT 3:1 SLOPE. SOD ALL DISTURBED AREAS WITH BERMUDA SOD.

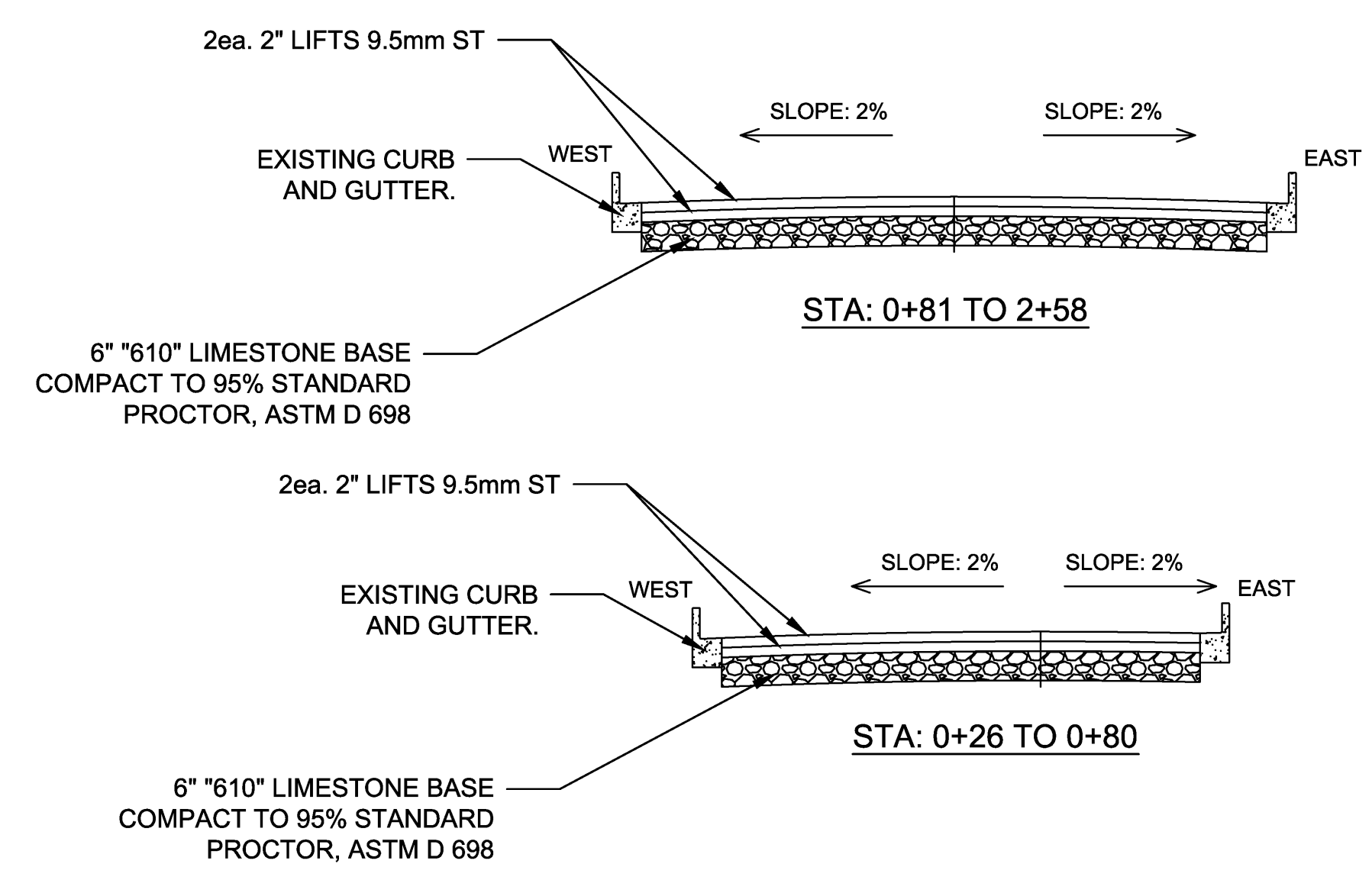
REVISION	DATE	DRAWN	APPROVED
UNITED STATES AIR FORCE		AIR EDUCATION AND TRAINING COMMAND	
KEESLER AIR FORCE BASE BLOOMINGVILLE, MISSISSIPPI			
OFFICE OF CIVIL ENGINEERS			
REPAIR HERCULES STREET TRAFFIC CONTROL PLAN			
SUBMITTED: D. KINMAN KK	CHECKED: XXXX KK	RECOMMENDED: (Chief of Engineering) A. MARASCA SCALE: AS SHOWN	FACILITY NUMBER: HERCULES STREET DRAWING NUMBER: C2.0
DRAWN: KK	DATE: 11/30/2017	PROJECT NUMBER: MAHGC 17-1010	SHEET 3 of 4



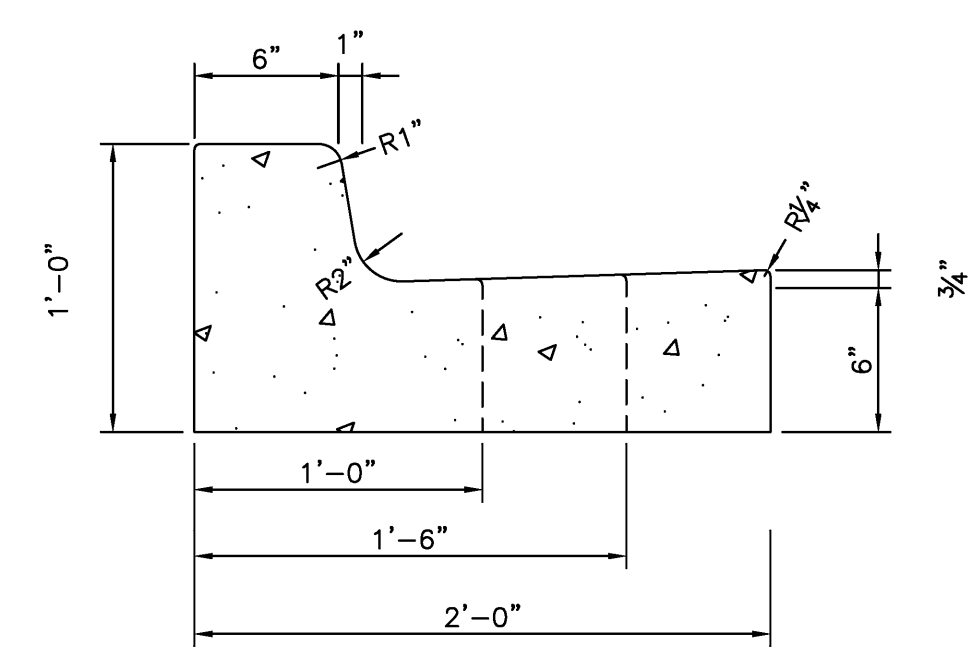
IN-LINE WATER VALVE & VALVE BOX W/ STACK PIPE
SCALE: N.T.S.



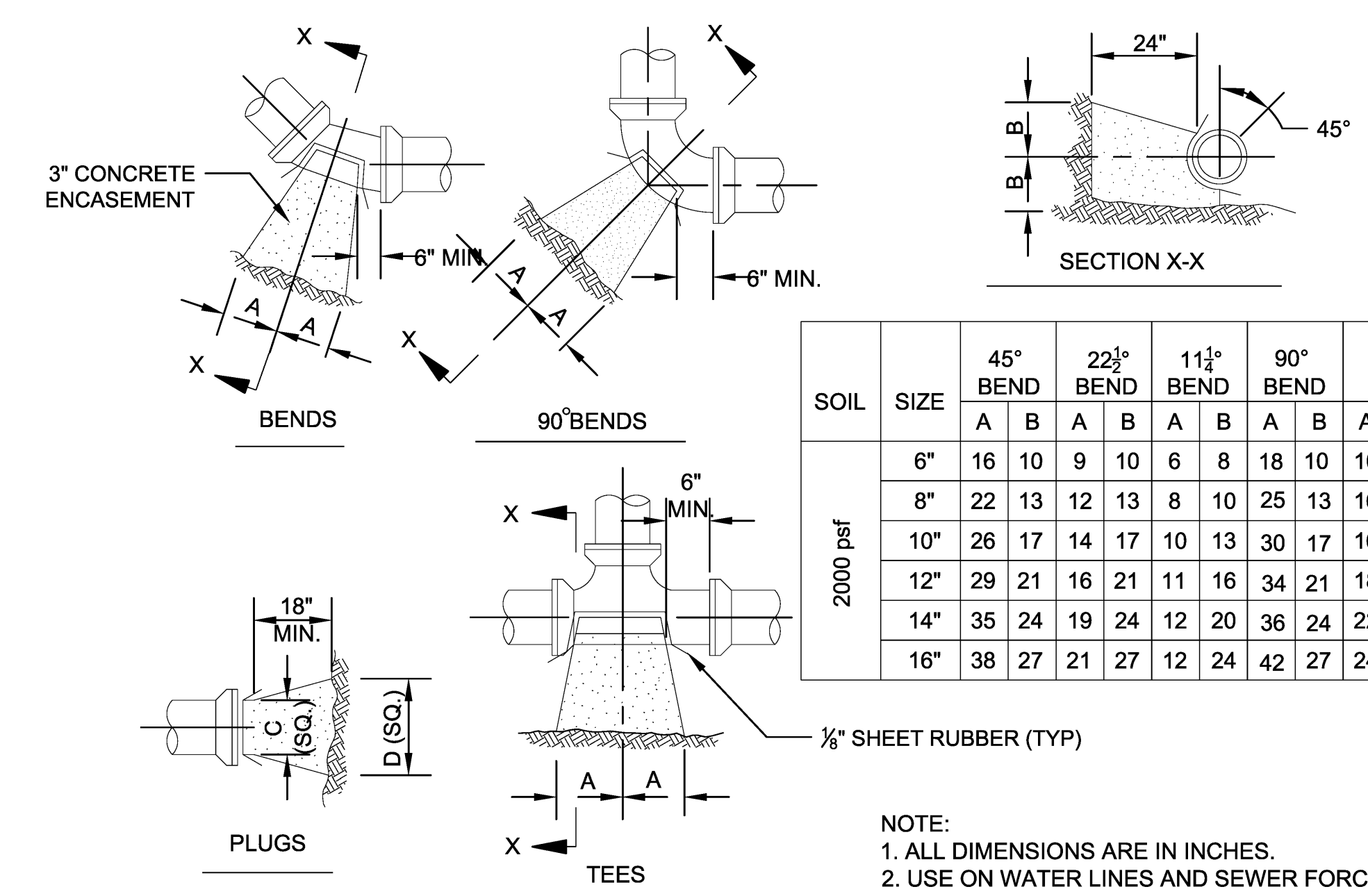
WATER PIPE PLACEMENT DETAIL
SCALE: N.T.S.



CROSS SECTIONS (TYP)
SCALE: 1\"/>



CURB AND GUTTER (TYP)
SCALE: 1-1/2\"/>

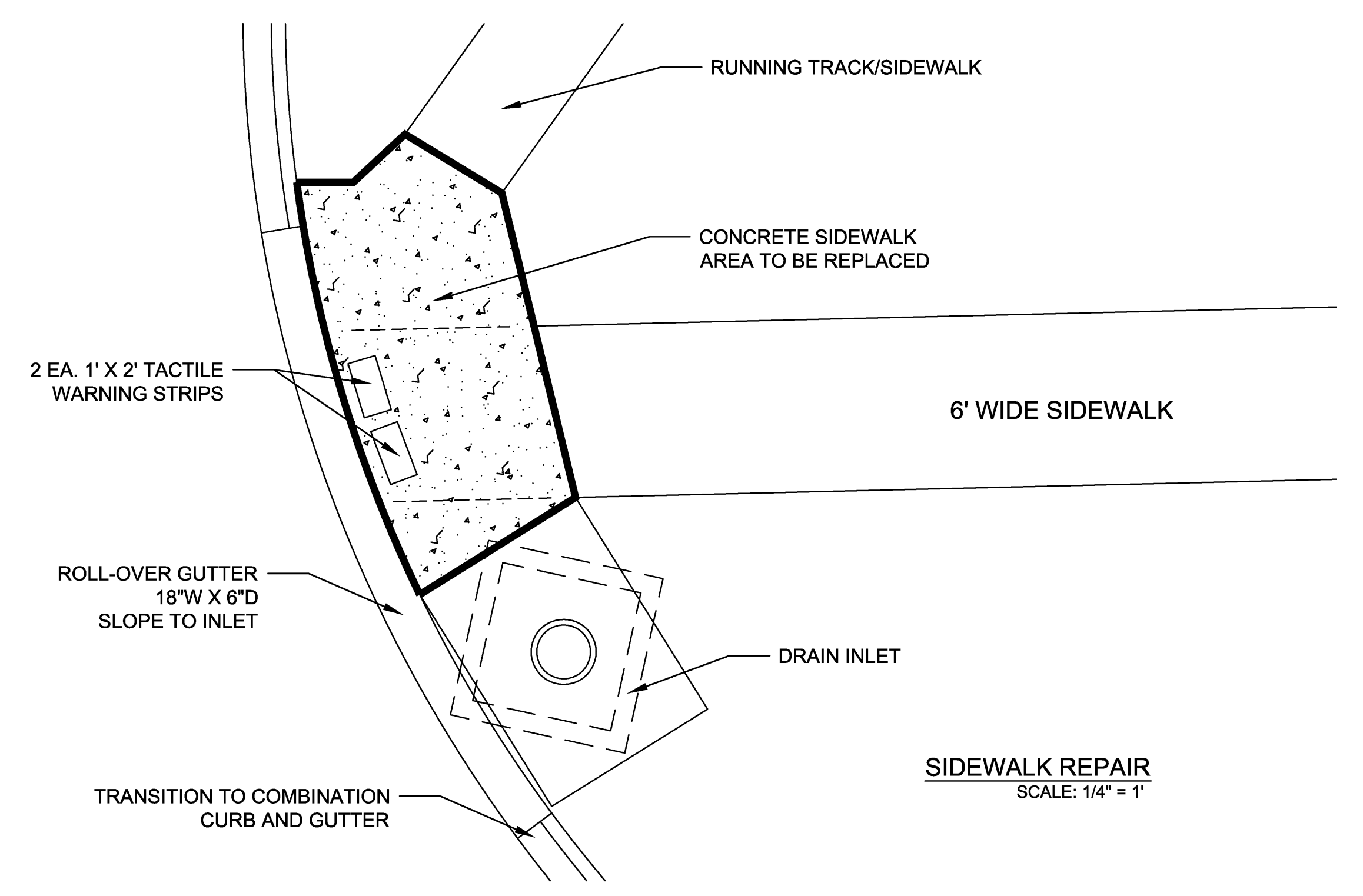


SOIL	SIZE	45° BEND		22½° BEND		11¼° BEND		90° BEND		TEE			PLUG	
		A	B	A	B	A	B	A	B	A	B	C	D	
2000 psf	6"	16	10	9	10	6	8	18	10	10	12	10	21	
	8"	22	13	12	13	8	10	25	13	16	12	20	29	
	10"	26	17	14	17	10	13	30	17	16	20	14	36	
	12"	29	21	16	21	11	16	34	21	18	24	16	41	
	14"	35	24	19	24	12	20	36	24	22	27	18	48	
16"	38	27	21	27	12	24	42	27	24	30	20	54		

NOTE:
1. ALL DIMENSIONS ARE IN INCHES.
2. USE ON WATER LINES AND SEWER FORCE MAINS.

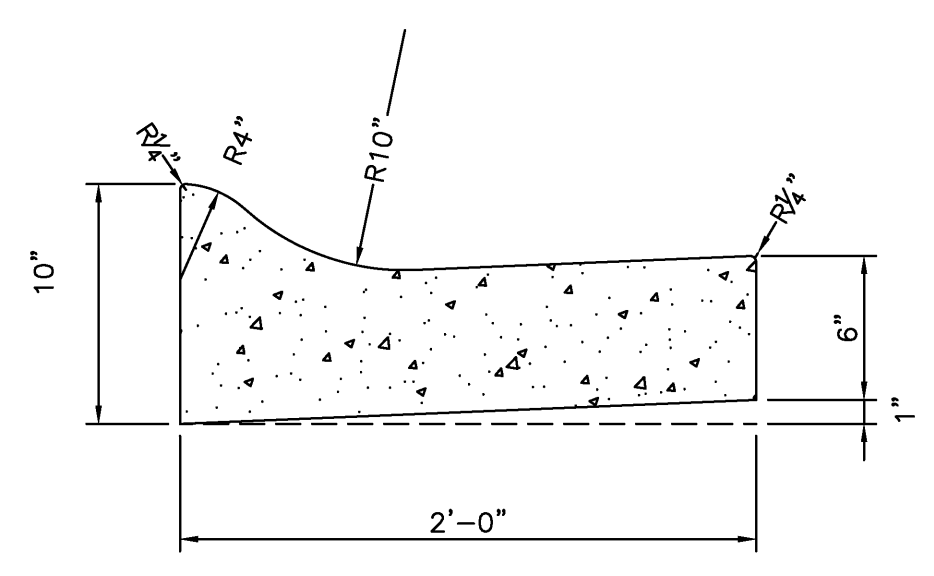
GENERAL NOTE:
ALL CONCRETE AND PIPE SHALL BE SEPARATED BY A NON-CONDUCTIVE MATERIAL (TYPICALLY 1/8" SHEET RUBBER)

TYPICAL THRUST BLOCK DETAILS
SCALE: N.T.S.



SIDEWALK REPAIR
SCALE: 1/4\"/>

- NOTES:
1. SIDEWALK DEMO/REPLACE: APPROX. 98 SF (4" THICKNESS).
2. PLACE CONTROL JOINTS IN CURB @ 10' INTERVALS.
3. PLACE 1/2" EXPANSION JOINT BETWEEN NEW WORK AND EXISTING
4. CONCRETE SHALL DEVELOP A MINIMUM COMPRESSIVE STRENGTH OF 3500 PSI IN 28 DAYS. MAXIMUM SLUMP SHALL BE 5". SUBMIT MIX DESIGN FOR APPROVAL.



ROLLOVER CURB AND GUTTER (TYP)
SCALE: 1-1/2\"/>

REVISION	DATE	BY	CHKD	APPROVED
UNITED STATES AIR FORCE AIR EDUCATION AND TRAINING COMMAND				
KEESLER AIR FORCE BASE BLOX: MISSISSIPPI OFFICE OF CIVIL ENGINEERS				
REPAIR HERCULES STREET STANDARD DETAILS				
SUBMITTED: (Chief of Contracts Design) D. KINMAN		RECOMMENDED: (Chief of Engineering) A. MARASCA		FACILITY NUMBER: HERCULES STREET
DESIGNED: KK	CHECKED: XXXX	SCALE: AS SHOWN	DRAWING NUMBER: C3.0	
DRAWN: KK	DATE: 11/30/2017	PROJECT NUMBER: MAHIG 17-1010	SHEET 4 of 4	