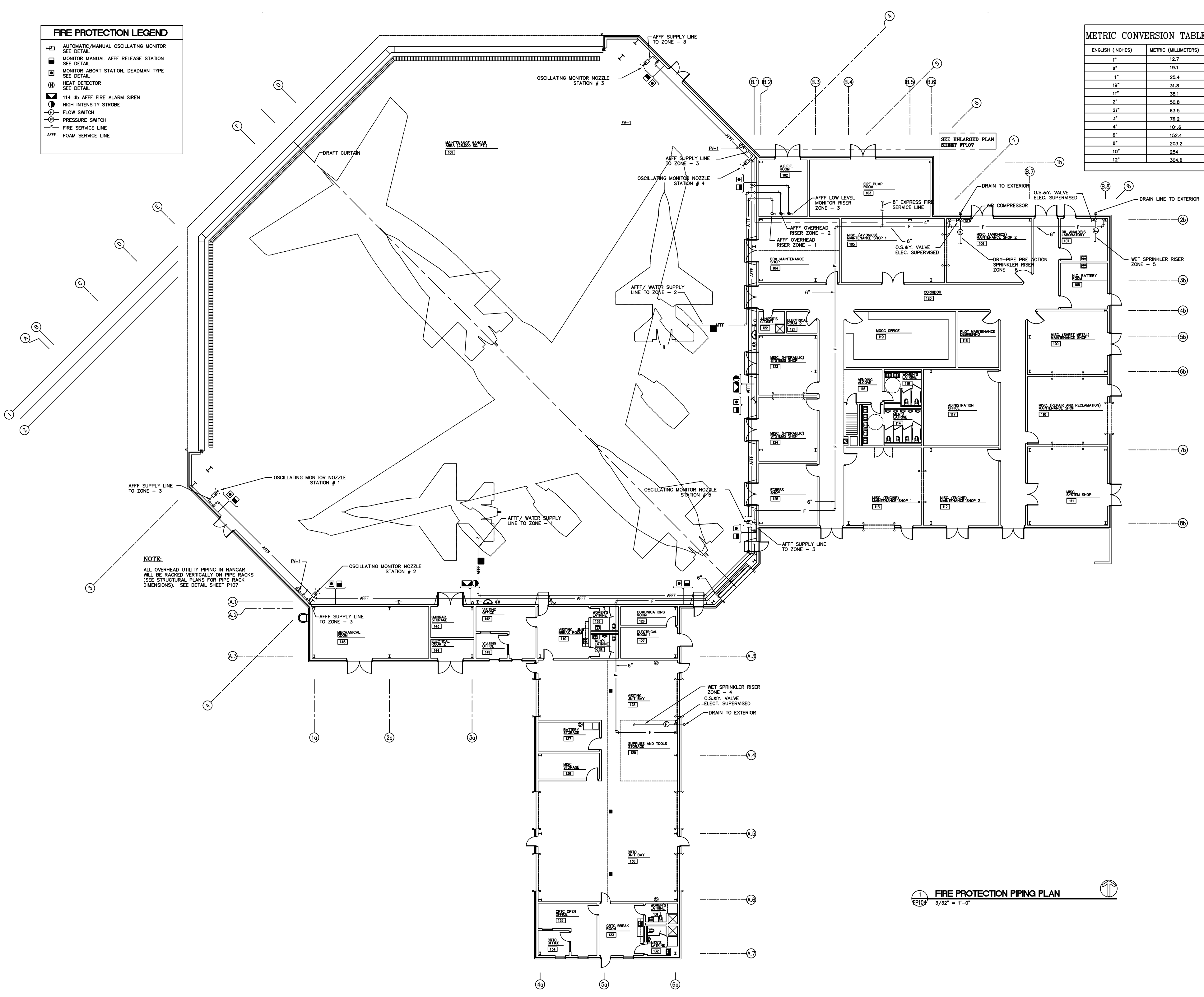


FIRE PROTECTION LEGEND

- ◻ AUTOMATIC/MANUAL OSCILLATING MONITOR
SEE DETAIL
- ◻ MONITOR/MANUAL AFF RELEASE STATION
SEE DETAIL
- ◻ MONITOR ABORT STATION, DEADMAN TYPE
SEE DETAIL
- ◻ HEAT DETECTOR
SEE DETAIL
- ◻ 114 LB AFF FIRE ALARM SHRN
- ◻ HIGH INTENSITY STROBE
- ◻ FLOW SWITCH
- ◻ PRESSURE SWITCH
- FIRE SERVICE LINE
- AFF FOAM SERVICE LINE

METRIC CONVERSION TABLE

ENGLISH (INCHES)	METRIC (MILLIMETERS)
1"	25.4
1/2"	12.7
3/4"	19.1
1 1/4"	31.8
1 1/2"	38.1
2"	50.8
2 1/2"	63.5
3"	76.2
4"	101.6
6"	152.4
8"	203.2
10"	254
12"	304.8



FIRE PROTECTION PIPING PLAN
3/32" = 1'-0"

QUINN
ENGINEERING

REPLACE AIRCRAFT MAINTENANCE HANGAR
JTV699090A
CRTC - OIL POINT, MISSISSIPPI

FIRE PROTECTION PIPING PLAN

DATE: 08.XI.08
DRAWN BY: [Name]
CHECKED BY: [Name]
DESIGNED BY: [Name]
PROJECT NO: 07-115-17
REVISION: 0001

FP104