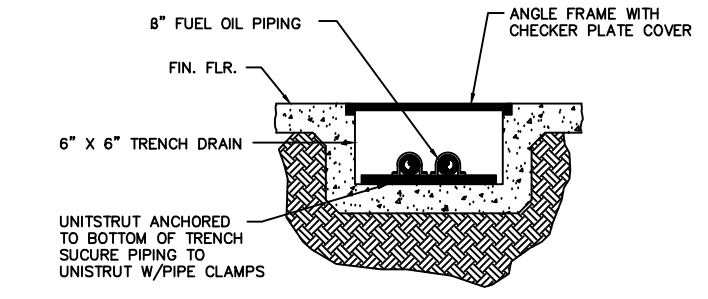
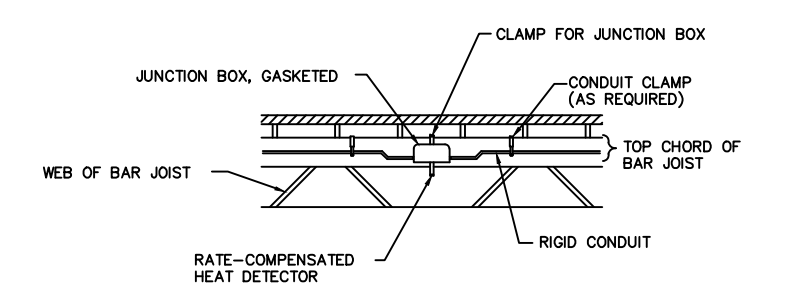


PLAN VIEW



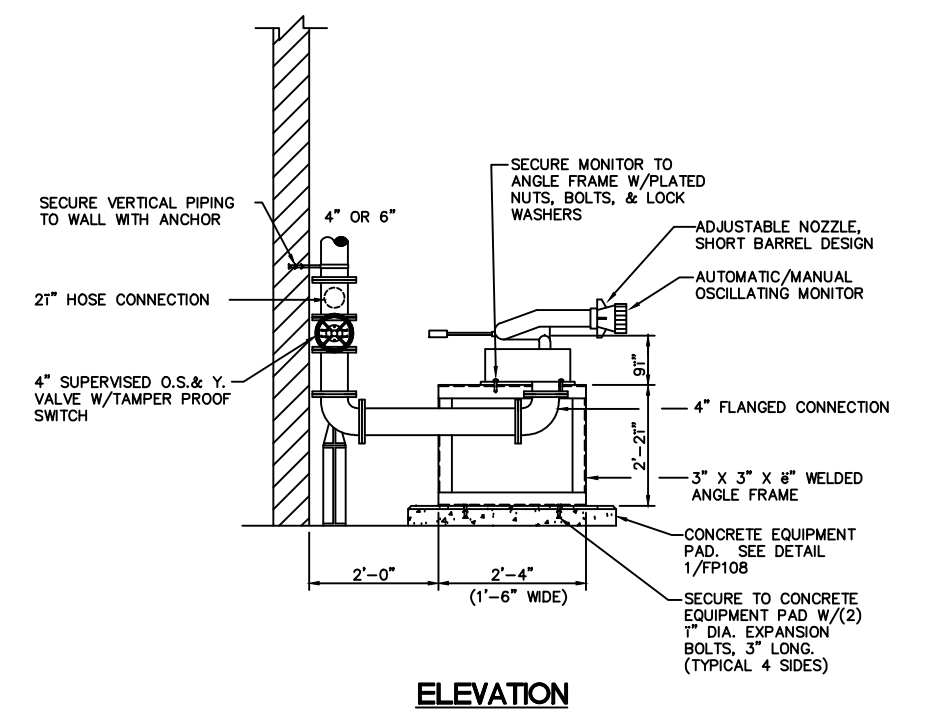
- NOTES:**
1. UNISTRUT SUPPORT SHALL BE SECURED TO THE BOTTOM OF THE TRENCH AT A MINIMUM OF 10" ON CENTER.
 2. PROVIDE ANGLE FRAME AND COVER OVER TRENCH. COVER SHALL BE SECTIONED SUCH THAT ACCESS TO TRENCH CAN BE ACHIEVED BY ONE MAN.

2 FUEL OIL PIPE TRENCH
N.T.S.



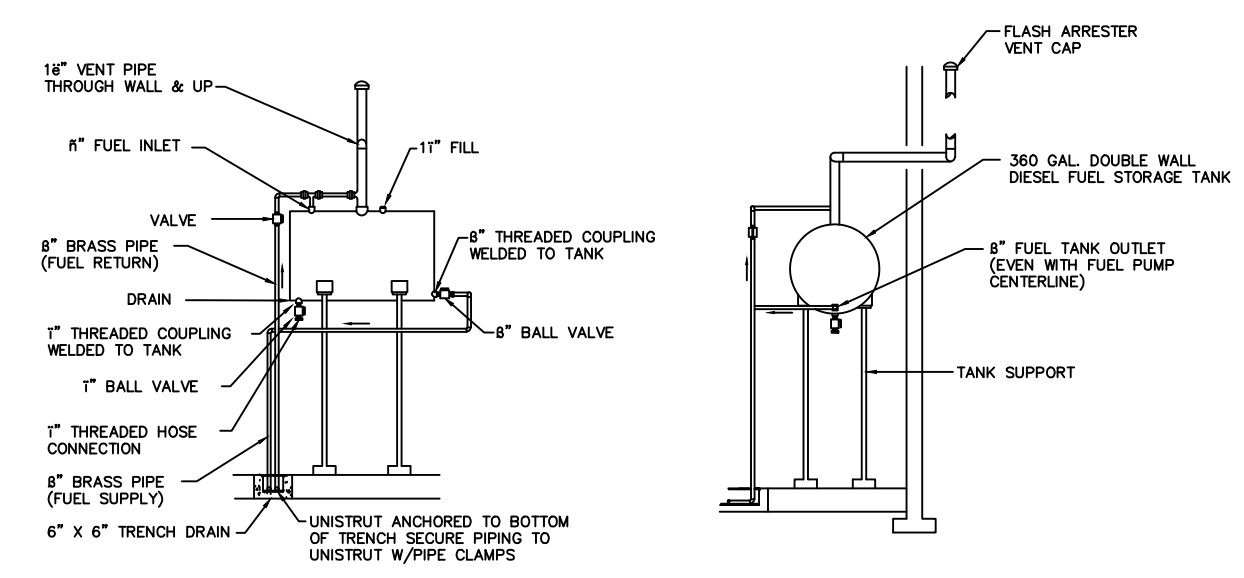
- * LOCATION OF HEAT DETECTOR SHALL CONFORM TO NFPA 72 SECTION 7.2.3. HEAT DETECTOR SHALL BE NOT LESS THAN 4" FROM SIDE WALLS.

3 RATE-COMPENSATED HEAT DETECTOR
N.T.S.

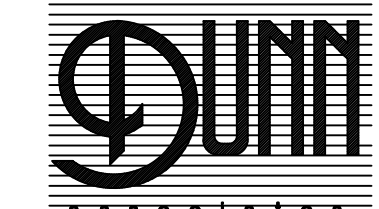


ELEVATION

1 AUTOMATIC/MANUAL OSCILLATING MONITOR
N.T.S.



4 DIESEL FUEL SYSTEM
N.T.S.



REPLACE AIRCRAFT MAINTENANCE HANGAR
JTVE99090A
CRIC - GULFPORT, MISSISSIPPI

FIRE PROTECTION DETAILS

DATE: 04-23-2010
 DESIGNED BY: JVC
 CHECKED BY: JVC
 DRAWN BY: JVC
 PROJECT NO: JTVE99090A
 SHEET NO: 10

FP109