

Applicable Codes:
 Building Code: **UFC 3-000-01 / 2012 INTERNATIONAL BUILDING CODE**
 Structural Code: **3-600-01**
 Plumbing Code: **3-490-01**
 Mechanical Code: **3-480-01**
 Fire Code: **3-600-01**
 Electrical Code: **3-500-01**
 Energy Code: **3-100-02**
 Accessibility Code: **2010 ADA STANDARDS**
 Life Safety Code: **3-600-01 / NFPA 101**

IBC Chapter 3 and UFC 3-000-01 Occupancy & Use:
NFPA 101 Chapter 6:
 • See Legend on Life Safety Plan

IBC Chapter 4 - Special Detailed Requirements:
 • **NOT APPLICABLE**

IBC Chapter 5 - General Building Heights & Areas:
 • Construction Type: **A, B, FULLY SPRINKLED, GROUP 3-1, B, H-2 SEPARATED**

• Allowable Building Height: **TABLE 504.3**
GROUP 3-1 = 75 FEET ABOVE GRADE PLANE
GROUP B = 75 FEET ABOVE GRADE PLANE
GROUP H-2 = 55 FEET ABOVE GRADE PLANE

• Allowable Number of Stories Above Grade Plane: **(SEE TABLE 504.4)**
GROUP 3-1 = 3 STORIES ABOVE GRADE PLANE
GROUP B = 4 STORIES ABOVE GRADE PLANE
GROUP H-2 = 1 STORY ABOVE GRADE PLANE

• Tabular Building Area: **(SEE TABLE 504.5)**

GROUP 3-1 = 70,000 SQUARE FEET
ACTUAL GROUP 3-1 AREA = 29,244
GROUP B = 95,000 SQUARE FEET
ACTUAL GROUP B AREA = 4,452
GROUP H-2 = 7,000 SQUARE FEET
ACTUAL GROUP H-2 AREA = 1,453

• Allowable Building Area: **(SEE SECTION 508.2.2)**

S-1 = 29,244 / 70,000 = .42
B = 4,452 / 95,000 = .05
H-2 = 1,453 / 7,000 = .21

• $.42 + .05 + .21 = .72$, SUM OF RATIOS IS LESS THAN 1

• Fire Separation Requirements: **Per Table 504.4**

OCCUPANCIES **RATINGS (HR)**

S-1 2
 H-2 2

• Incidental Use Areas: **(PER TABLE 502)**
 • See occupancy table.

IBC Chapter 6 Types of Construction:

• Construction Type: **A-B**

• Fire Rating: **(SEE TABLE 601)** as follows (Except where noted otherwise)

Primary Structural Frame: **0 HOUR**

Bearing Walls (Interior & Exterior): **0 HOUR**

Non-Bearing Walls and Partitions (Interior): **0 HOUR**

Floor Construction and Secondary Members: **0 HOUR**

Roof Construction and Secondary Members: **0 HOUR**

• Required Fire Rating: **(Per Table 602)**

OCCUPANCY FIRE SEPARATION REQUIRED SEPARATION

TYPE (ACTUAL) TYPE

S-1 >30'-0" 0 HR

B 27'-6" 0 HR

H-2 >30'-0" 0 HR

NFPA CHAPTER 6 - Fire and Smoke Protection Features:

• Maximum Exterior Wall Opening: **(PER SECTION 603.2)**

Fire Separation: Degree of Opening Protection: Allowable Area:

GREATER THAN 60 FT **UNPROTECTED, SPRINKLED (UP, S)** **NO LIMIT**

• Fire Walls: **(PER NFPA 6.2)**

No fire walls are present within the scope of the project.

• Shaft Enclosure: **(Per NFPA 6.3.1.2.1)**

No shaft enclosure is present.

• Opening Protective Devices: **(Per NFPA 6.3.4)**

Type of Assembly Assembly Rating Required Opening Protection (Door/Sluice)

FR-BARRIERS **2 HOURS** **1 1/2 HOUR/2 HOUR**

FR-BARRIERS **1 HOUR** **3/4 HOUR/3/4 HOUR**

• Concealed Spaces: **(Per Section 6.6.1.1)**

Not Applicable

• See Legend on Life Safety Plan for Applicable UL Assemblies to be provided.

IBC Chapter 8, UFC 3-600-01, NFPA 101 - Interior Finishes:

• Finish Material Rating Requirements: **(Per NFPA 101)**

BUSINESS (CHAPTER 8.3)

Exits and Exit Access Corridors

Interior Wall and Ceiling Finish: **CLASS A OR B (28.3.3.2.1)**

Interior Floor Finish: **CLASS I OR CLASS II (28.3.3.3.2)**

Areas other than Exits and Exit Access Corridors

Interior Wall and Ceiling Finish: **CLASS A, B, OR C (28.3.3.2.2)**

Interior Floor Finish: **NO REQUIREMENT (28.3.3.3.2)**

STORAGE (CHAPTER 8.2)

Exits and Exit Access Corridors

Interior Wall and Ceiling Finish: **CLASS A, B, OR C (28.3.3.2.1)**

Interior Floor Finish: **CLASS I OR CLASS II (28.3.3.3.1)**

Areas other than Exits and Exit Access Corridors

Interior Wall and Ceiling Finish: **CLASS A, B, OR C (28.3.3.2.2)**

Interior Floor Finish: **NO REQUIREMENT (28.3.3.3.2)**

UFC 3-600-01 (replaces IBC Chapter 9) - Fire Protection Systems:

• **SECTION 9.1 - EMERGENCY VEHICLE ACCESS**

1. Facility **REQUIRES** one means of all-weather emergency vehicle access in accordance with **9.1.1.1**

2. Facility **REQUIRES** serial apparatus access in accordance with **9.1.1.2**

• **SECTION 9.2 - FIRE FLOW FOR FACILITIES**

1. Fire flow for service systems is provided in accordance with **9.2.1**

• **SECTION 9.3 - SERVICE MAINS AND LATERALS**

1. Fire hydrants are provided in accordance with **9.3.3.2**

A. Hydrants are spaced at **300 FT** maximum

B. Hydrant to be located within 150' of Fire Department Connection

• **SECTION 9.5 - FIRE PUMPS**

1. A fire pump **IS** required to meet fire protection demand, and is provided in accordance with **9.5** adjacent to building 1201.

2. Existing fire pumps (2-2,000 gpm pumps) and existing 75,000 gallon on site water storage will serve the facility.

• **SECTION 9.7 - AUTOMATIC SPRINKLER SYSTEMS**

1. For **9.7.6.1**, an automatic sprinkler system **IS** required

• **SECTION 9.10 - STANDPIPE SYSTEMS**

• **9.10** is **NOT** required

• **SECTION 9.17 - PORTABLE FIRE EXTINGUISHERS**

1. For **9.17.1**, portable fire extinguishers **ARE** required

NFPA Chapter 7 (replaces IBC Chapter 10) - Means of Egress:

• Occupancy Loads: **(PER TABLE 7.3.1.2)**

See Occupancy Table

• Egress Capacity During: **(PER TABLE 7.3.3.1)**

See Code Calculations Tables

• Minimum Stair Width: **(PER SECTION 7.3.3.1)**

See Code Calculations Tables

• Number of Means of Egress: **(PER SECTION 7.4.1)**

Total Number of Exits Required

Business Occupancy: **(CHAPTER 8)**

GROUND FLOOR - 2 EXITS REQUIRED

Storage Occupancy: **(CHAPTER 8)**

GROUND FLOOR - 1 EXIT REQUIRED

General Public Use, Retail Occupancies

Business Occupancy: **(CHAPTER 8)**

100 FT per **8.2.5.3.1**

Storage Occupancy: **(CHAPTER 8)**

100 FT per **8.2.5.3.1**

Other: **(CHAPTER 7)**

Mechanical Equipment Rooms, Boiler Rooms, and Furnace Rooms: **100 FT** per **7.1.6.1**

• Exit Access Travel Distance: **(CHAPTER 8)**

Business Occupancy: **300 FT** per **8.2.6.3**

Storage Occupancy: **400 FT** per **8.2.6.3**

• **SECTION 7.1.6.1** is **NOT** required

• **SECTION 7.1.7** is **NOT** required

• **SECTION 7.1.7.1** is **NOT** required

• **SECTION 7.1.7.2** is **NOT** required

• **SECTION 7.1.7.3** is **NOT** required

• **SECTION 7.1.7.4** is **NOT** required

• **SECTION 7.1.7.5** is **NOT** required

• **SECTION 7.1.7.6** is **NOT** required

• **SECTION 7.1.7.7** is **NOT** required

• **SECTION 7.1.7.8** is **NOT** required

• **SECTION 7.1.7.9** is **NOT** required

• **SECTION 7.1.7.10** is **NOT** required

• **SECTION 7.1.7.11** is **NOT** required

• **SECTION 7.1.7.12** is **NOT** required

• **SECTION 7.1.7.13** is **NOT** required

• **SECTION 7.1.7.14** is **NOT** required

• **SECTION 7.1.7.15** is **NOT** required

• **SECTION 7.1.7.16** is **NOT** required

• **SECTION 7.1.7.17** is **NOT** required

• **SECTION 7.1.7.18** is **NOT** required

• **SECTION 7.1.7.19** is **NOT** required

• **SECTION 7.1.7.20** is **NOT** required

• **SECTION 7.1.7.21** is **NOT** required

• **SECTION 7.1.7.22** is **NOT** required

• **SECTION 7.1.7.23** is **NOT** required

• **SECTION 7.1.7.24** is **NOT** required

• **SECTION 7.1.7.25** is **NOT** required

• **SECTION 7.1.7.26** is **NOT** required

• **SECTION 7.1.7.27** is **NOT** required

• **SECTION 7.1.7.28** is **NOT** required

• **SECTION 7.1.7.29** is **NOT** required

• **SECTION 7.1.7.30** is **NOT** required

NFPA Chapter 7 (CONTINUED)

• Corridors

Occupancy Type: **(U)** required:

NO FIRE RATING REQUIRED FOR CORRIDOR WALLS

See the safety plan for locations of critical corridors.

Occupancy Type: **(E-1)** required:

NO FIRE RATING REQUIRED FOR CORRIDOR WALLS PER 4.2.3.6

See the safety plan for locations of critical corridors.

Minimum Corridor Width

Business Occupancy: **(CHAPTER 8)**

44 inches per **8.2.3.2**

Storage Occupancy: **(CHAPTER 8)**

46 inches per **7.3.4.1**

Dead End Corridors

Business Occupancy: **(CHAPTER 8)**

Maximum of **50** feet per **8.2.3.2.1**

Storage Occupancy: **(CHAPTER 8)**

Maximum of **100** feet per **TABLE 4.2.3.5**

SYMBOLS LEGEND

- EW ELECTRIC WATER COOLER - SEE PLUMBING
- FE FIRE EXTINGUISHER IN SEMI-RECESSED CABINET
- FE FIRE EXTINGUISHER WITH BRACKET
- 1 HR 1 HR FIRE RATED WALL (UL #914)
- 2 HR 2 HR FIRE RATED WALL (UL #805)
- SMOKE SMOKE PARTITION AND CEILING ENCLOSURE
- DASHED DASHED LINE INDICATES LOCATION OF 1-HOUR RATED WALL (UL # 1404) LOCATED ON MEZZANINE LEVEL SEPARATING WAREHOUSE FROM ADMIN SPACE
- 1 HR 1 HR FIRE RATED FLOOR/CILING ASSEMBLY (UL # 6717)
- 2 HR 2 HR FIRE RATED FLOOR/CILING ASSEMBLY (UL #6505)
- EMERGENCY EMERGENCY EXIT SIGNAGE
- HANDICAP HANDICAP ACCESSIBLE EXIT LOCATION
- EXIT TRAVEL EXIT TRAVEL PATH

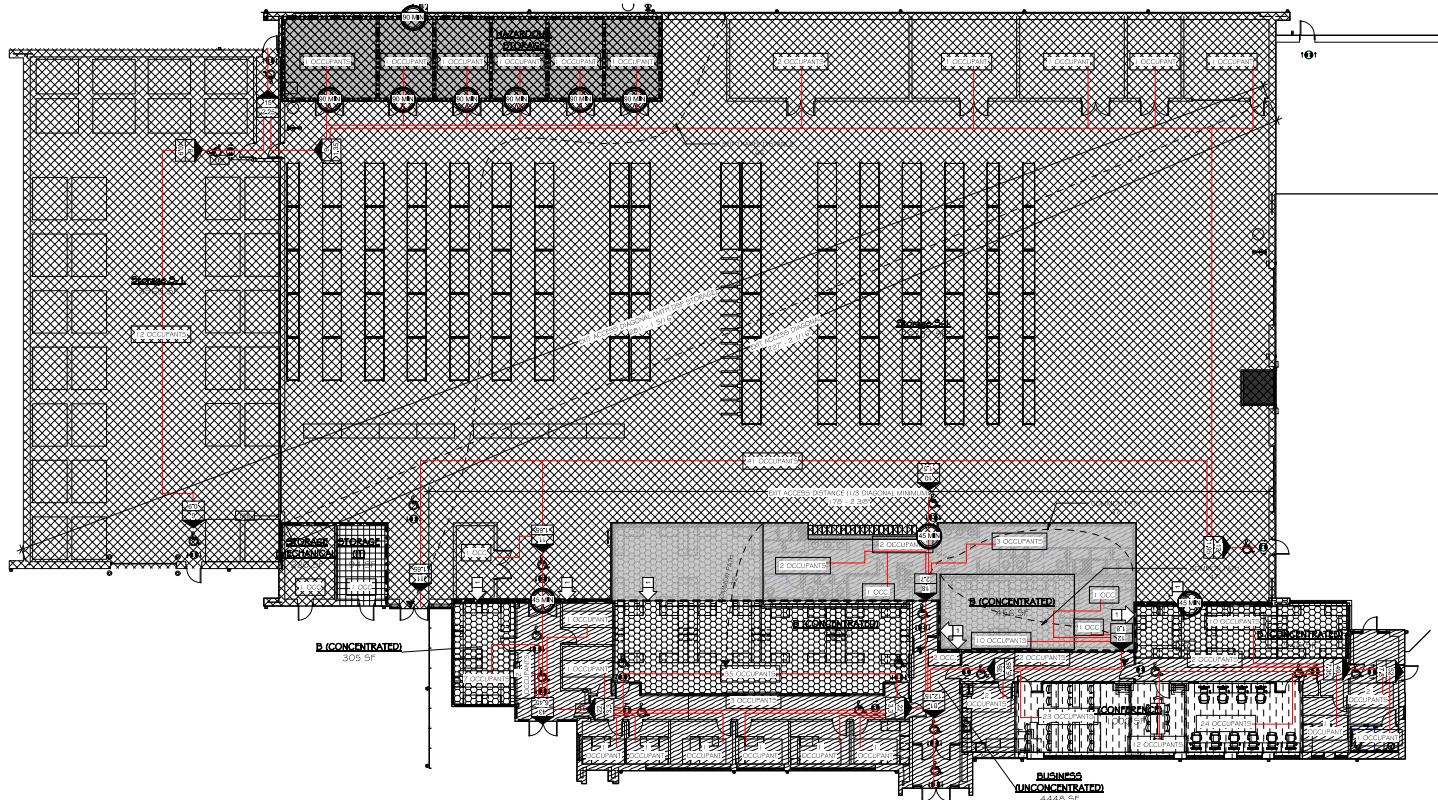
- STORAGE H-2 GROUP (IBC 2018) 300 SF PER OCCUPANT PER NFPA 101 ORDINARY HAZARD (NFPA 101)
- STORAGE S-1 GROUP (IBC 2018) 300 SF PER OCCUPANT PER NFPA 101 ORDINARY HAZARD (NFPA 101)
- BUSINESS B OCCUPANCY GROUP (IBC 2018) 150 SF PER OCCUPANT PER NFPA 101 ORDINARY HAZARD (NFPA 101)
- BUSINESS B OCCUPANCY GROUP (IBC 2018) 50 SF PER OCCUPANT PER NFPA 101 ORDINARY HAZARD (NFPA 101)
- BUSINESS B OCCUPANCY GROUP (IBC 2018) 15 SF PER OCCUPANT PER NFPA 101 ORDINARY HAZARD (NFPA 101)
- STORAGE 5-1 OCCUPANCY GROUP (IBC 2018) 300 SF PER OCCUPANT PER NFPA 101 ORDINARY HAZARD (NFPA 101)
- STORAGE 5-1 OCCUPANCY GROUP (IBC 2018) 500 SF PER OCCUPANT PER NFPA 101 ORDINARY HAZARD (NFPA 101)
- OCCUPANT LOAD OCCUPANT LOAD
- REQUIRED DOOR WIDTH REQUIRED DOOR WIDTH

FIRST FLOOR PLAN CODE CALCULATIONS

Name	Occupancy Calculations			Egress Width Calculations			
	Area (SF)	Occupancy Factor (SF per Occupant)	Factor Type	Total Occupant Load (Occupants)	Other Egress Component Width	Calculated Width (Other Egress Components) (Inches)	Required Egress Width (Inches)
B (CONCENTRATED)	1723 SF	50 SF	GROSS	35.00	0.2	7.00	44
B (CONCENTRATED)	546 SF	50 SF	GROSS	11.00	0.2	2.20	44
B (CONCENTRATED)	456 SF	50 SF	GROSS	10.00	0.2	2.00	44
B (CONCENTRATED)	309 SF	50 SF	GROSS	7.00	0.2	1.40	44
B (CONFERENCE)	1000 SF	15 SF	NET	67.00	0.2	13.40	44
BUSINESS (UNCONCENTRATED)	4448 SF	150 SF	GROSS	30.00	0.2	6.00	44
HAZARDOUS STORAGE	1536 SF	500 SF	GROSS	4.00	0.2	0.80	44
STORAGE	184 SF	500 SF	GROSS	1.00	0.2	0.20	44
STORAGE (MECHANICAL)	220 SF	500 SF	GROSS	1.00	0.2	0.20	44
Storage S-1	2275 SF	500 SF	GROSS	4.00	0.2	0.80	44
Storage S-1	5965 SF	500 SF	GROSS	12.00	0.2	2.40	44
	39149 SF			224.00		44.60	

PLUMBING FIXTURE CALCULATIONS

Name	Male Occupancy	Female Occupancy	Water Closets Required		Lavatories Required		Drinking Fountains
			Men	Women	Men	Women	
BUSINESS / STORAGE	58	14	2,9	0,7	2,9	0,7	0,96
	58	14					



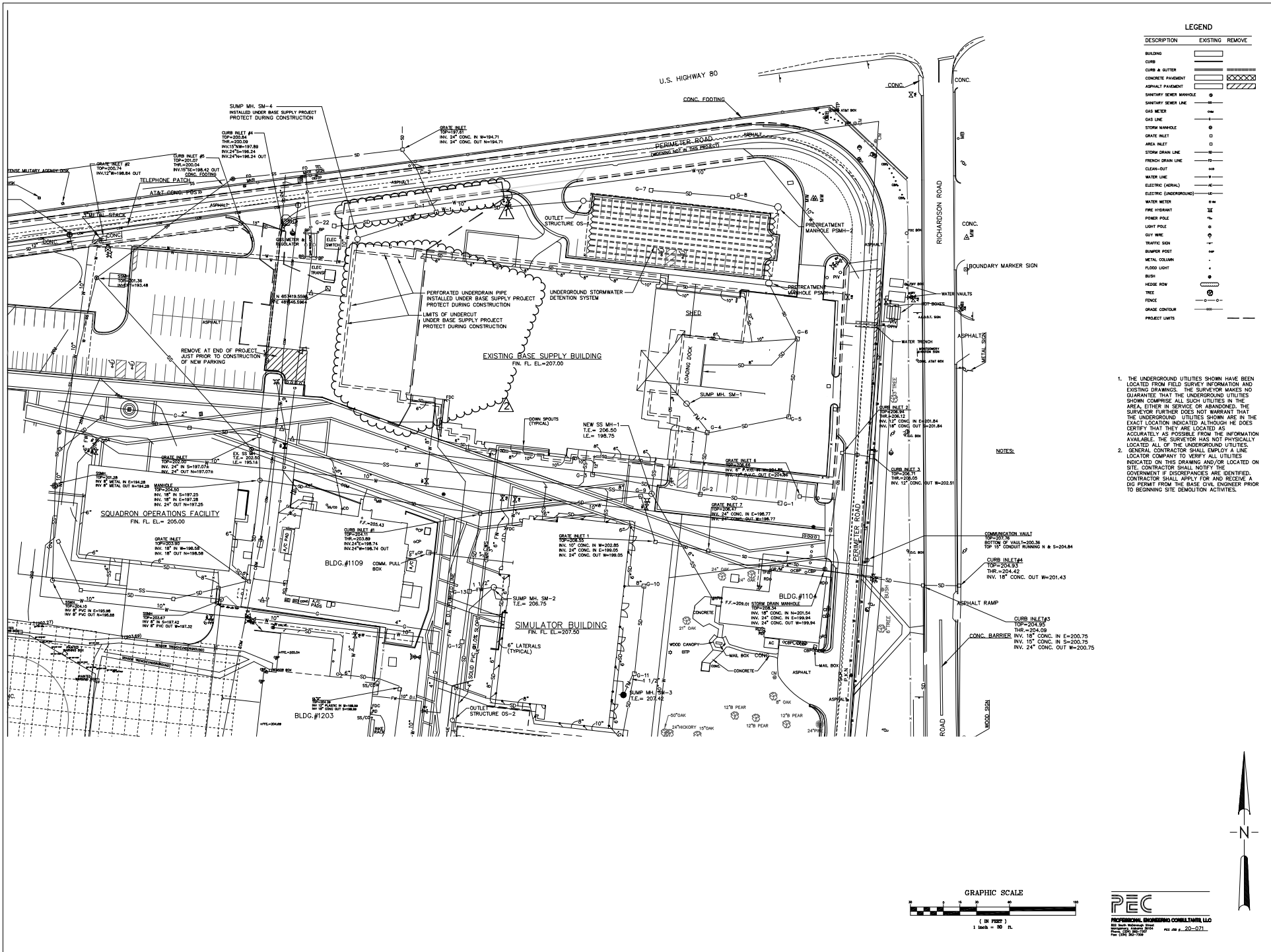
SS&L
 ARCHITECTURE PLANNING ENGINEERING
 1001 W. 10TH STREET, SUITE 100, DENVER, CO 80202
 (303) 733-7171

DEPLOYABLE PARTS STORAGE FACILITY
 DANNIELY FIELD
 MONTGOMERY, AL

Sheet Title: LIFE SAFETY PLAN

Sheet Number: LS1.0B

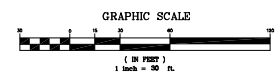
TYPE B-3
 100%
 SUBMITTAL



LEGEND

DESCRIPTION	EXISTING	REMOVE
BUILDING	[Solid Line]	[Dashed Line]
CURB & GUTTER	[Solid Line]	[Dashed Line]
CONCRETE PAVEMENT	[Solid Line]	[Dashed Line]
ASPHALT PAVEMENT	[Solid Line]	[Dashed Line]
SANITARY SEWER MANHOLE	[Circle]	[Circle]
SANITARY SEWER LINE	[Line]	[Line]
GAS MANHOLE	[Circle]	[Circle]
GAS LINE	[Line]	[Line]
STORM MANHOLE	[Circle]	[Circle]
AREA INLET	[Circle]	[Circle]
STORM DRAIN LINE	[Line]	[Line]
FRENCH DRAIN LINE	[Line]	[Line]
CLEAN-OUT	[Line]	[Line]
WATER LINE	[Line]	[Line]
ELECTRIC (OVERHEAD)	[Line]	[Line]
ELECTRIC (UNDERGROUND)	[Line]	[Line]
WATER METER	[Circle]	[Circle]
FIRE HYDRANT	[Circle]	[Circle]
POWER POLE	[Circle]	[Circle]
LIGHT POLE	[Circle]	[Circle]
UTILITY WIRE	[Circle]	[Circle]
TRAFFIC SIGN	[Circle]	[Circle]
BUMPER POST	[Circle]	[Circle]
METAL COLUMN	[Circle]	[Circle]
FLOOR LIGHT	[Circle]	[Circle]
BISS	[Circle]	[Circle]
WEED ROW	[Line]	[Line]
EDGE	[Line]	[Line]
GRADE CONTOUR	[Line]	[Line]
PROJECT LIMITS	[Line]	[Line]

- NOTES:**
1. THE UNDERGROUND UTILITIES SHOWN HAVE BEEN LOCATED FROM FIELD SURVEY INFORMATION AND EXISTING DRAWINGS. THE SURVEYOR MAKES NO GUARANTEE THAT THE UNDERGROUND UTILITIES SHOWN COMPRISE ALL SUCH UTILITIES IN THE AREA, EITHER IN SERVICE OR ABANDONED. THE SURVEYOR FURTHER DOES NOT WARRANT THAT THE UNDERGROUND UTILITIES SHOWN ARE IN THE EXACT LOCATION INDICATED, ALTHOUGH HE DOES CERTIFY THAT THEY ARE LOCATED AS ACCURATELY AS POSSIBLE FROM THE INFORMATION AVAILABLE. THE SURVEYOR HAS NOT PHYSICALLY LOCATED ALL OF THE UNDERGROUND UTILITIES INDICATED ON THIS DRAWING AND/OR LOCATED ON SITE. CONTRACTOR SHALL NOTIFY THE GOVERNMENT IF DISCREPANCIES ARE IDENTIFIED. CONTRACTOR SHALL APPLY FOR AND RECEIVE A DIG PERMIT FROM THE BASE CIVIL ENGINEER PRIOR TO BEGINNING SITE DEMOLITION ACTIVITIES.
 2. GENERAL CONTRACTOR SHALL EMPLOY A LINE LOCATOR COMPANY TO VERIFY ALL UTILITIES INDICATED ON THIS DRAWING AND/OR LOCATED ON SITE. CONTRACTOR SHALL NOTIFY THE GOVERNMENT IF DISCREPANCIES ARE IDENTIFIED. CONTRACTOR SHALL APPLY FOR AND RECEIVE A DIG PERMIT FROM THE BASE CIVIL ENGINEER PRIOR TO BEGINNING SITE DEMOLITION ACTIVITIES.



PEC
 PROFESSIONAL ENGINEERING CONSULTANTS, LLC
 800 West Main Street
 Montgomery, AL 36102
 Phone: (334) 947-7500

SS&L
 SURVEYING & SITE ANALYSIS
 1000 W. 25th Street
 Montgomery, AL 36102
 Phone: (334) 252-3333
 Fax: (334) 252-3333

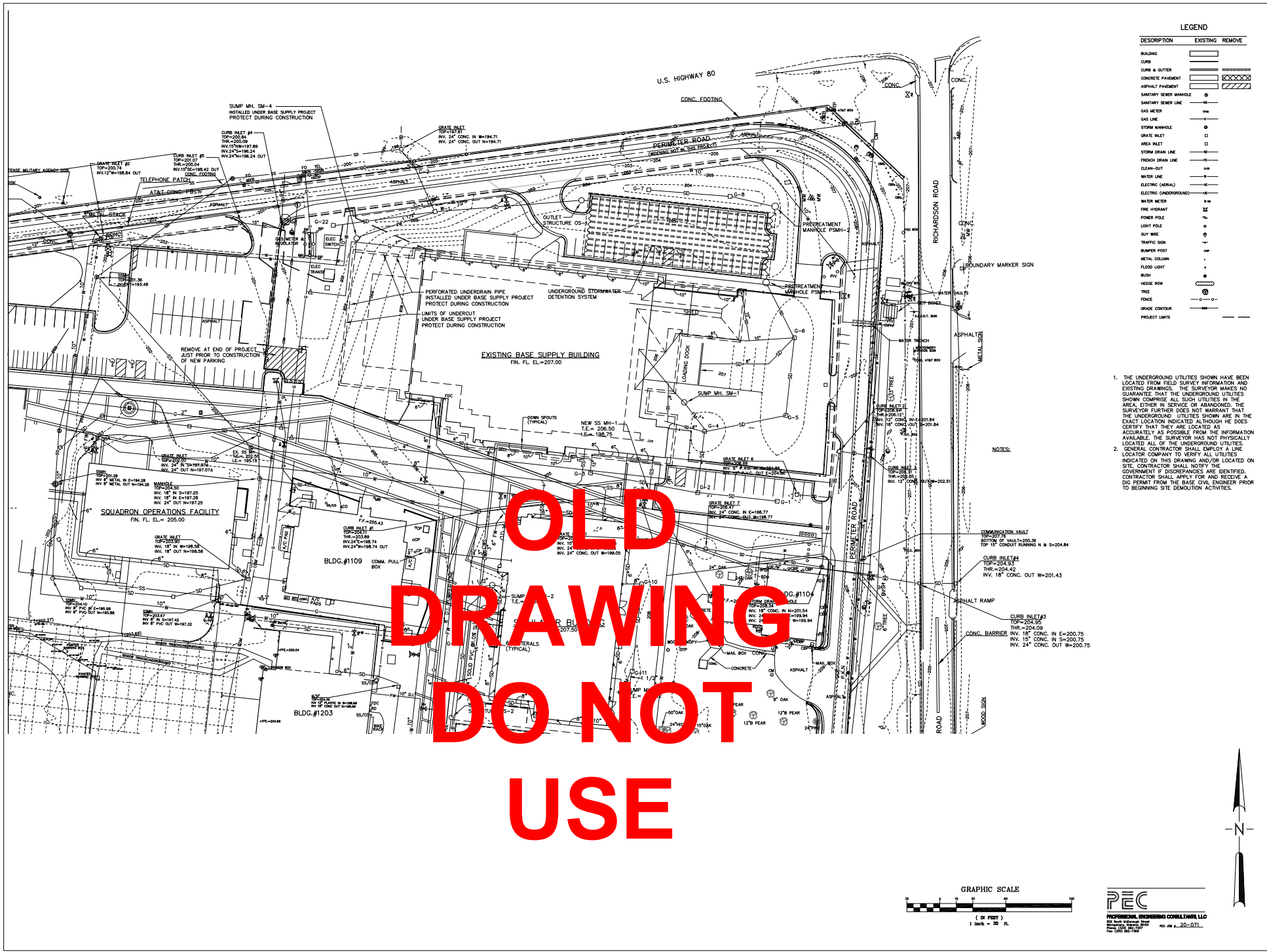
Rev.	Description	Date
1	ISSUE FOR 17-30-26	
2	PR 1	1-21-26

Job Number: 19084
 Date: 09/06/2022
 Drawn By: TRG
 Checked By: SBC
 Project File:

DEPLOYABLE PARTS STORAGE FACILITY
 DANNELLY FIELD
 MONTGOMERY, AL

Draw Title: DSP SITE DEMOLITION PLAN
 Draw Number: C1.1

1/21/26

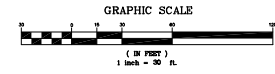


LEGEND

DESCRIPTION	EXISTING	REMOVE
BUILDING	[Solid Line]	[Dashed Line]
CURB & GUTTER	[Solid Line]	[Dashed Line]
CONCRETE PAVEMENT	[Hatched Pattern]	[Dashed Pattern]
ASPHALT PAVEMENT	[Hatched Pattern]	[Dashed Pattern]
SANITARY SEWER MANHOLE	[Circle]	[Circle]
SANITARY SEWER LINE	[Line]	[Line]
GAS METER	[Circle]	[Circle]
GAS LINE	[Line]	[Line]
STORM MANHOLE	[Circle]	[Circle]
GRATE INLET	[Circle]	[Circle]
AREA INLET	[Circle]	[Circle]
STORM DRAIN LINE	[Line]	[Line]
FRENCH DRAIN LINE	[Line]	[Line]
CLEAN-OUT	[Line]	[Line]
WATER LINE	[Line]	[Line]
ELECTRIC (AERIAL)	[Line]	[Line]
ELECTRIC (UNDERGROUND)	[Line]	[Line]
WATER METER	[Circle]	[Circle]
FIRE HYDRANT	[Circle]	[Circle]
POWER POLE	[Circle]	[Circle]
LIGHT POLE	[Circle]	[Circle]
BUY HOLE	[Circle]	[Circle]
TRAFFIC SIGN	[Circle]	[Circle]
RUMPER POST	[Circle]	[Circle]
METAL COLUMN	[Circle]	[Circle]
FLOOD LIGHT	[Circle]	[Circle]
BUSH	[Circle]	[Circle]
HEDGE ROW	[Line]	[Line]
TREE	[Circle]	[Circle]
FENCE	[Line]	[Line]
GRADE CONTROL	[Line]	[Line]
PROJECT LIMITS	[Line]	[Line]

- NOTES:**
1. THE UNDERGROUND UTILITIES SHOWN HAVE BEEN LOCATED FROM FIELD SURVEY INFORMATION AND EXISTING DRAWINGS. THE SURVEYOR MAKES NO GUARANTEE THAT THE UNDERGROUND UTILITIES SHOWN COMPRISE ALL SUCH UTILITIES IN THE AREA, EITHER IN SERVICE OR ABANDONED. THE SURVEYOR FURTHER DOES NOT WARRANT THAT THE UNDERGROUND UTILITIES SHOWN ARE IN THE EXACT LOCATION INDICATED ALTHOUGH HE DOES CERTIFY THAT THEY ARE LOCATED AS ACCURATELY AS POSSIBLE FROM THE INFORMATION AVAILABLE. THE SURVEYOR HAS NOT PHYSICALLY LOCATED ALL OF THE UNDERGROUND UTILITIES INDICATED ON THIS DRAWING AND/OR LOCATED ON SITE. CONTRACTOR SHALL NOTIFY THE GOVERNMENT IF DISCREPANCIES ARE IDENTIFIED. CONTRACTOR SHALL APPLY FOR AND RECEIVE A DEDICATED PERMIT FROM THE BASE CIVIL ENGINEER PRIOR TO BEGINNING SITE DEMOLITION ACTIVITIES.
 2. GENERAL CONTRACTOR SHALL EMPLOY A LINE LOCATOR COMPANY TO VERIFY ALL UTILITIES.

**OLD
DRAWING
DO NOT
USE**

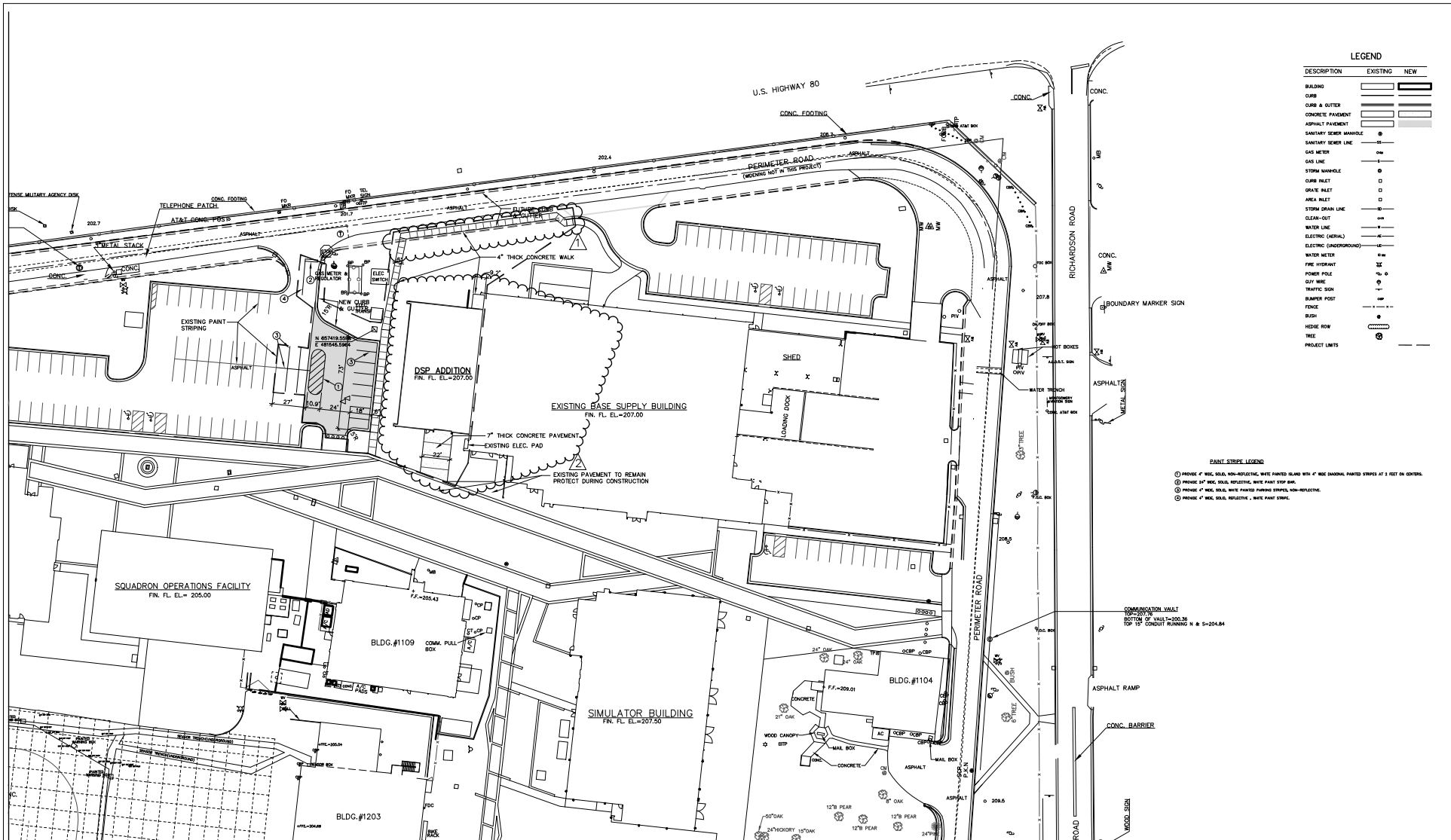


PEC
PROFESSIONAL ENGINEERING CONSULTANTS, LTD.
100 South Main Street
Montgomery, AL 36102
Tel: (205) 261-7200

SS&L
SURVEYING & SITE ANALYSIS, LLC
100 South Main Street
Montgomery, AL 36102
Tel: (205) 261-7200

DEPLOYABLE PARTS STORAGE FACILITY
DANNELLY FIELD
MONTGOMERY, AL

Sheet Title: DSP SITE DEMOLITION PLAN
Sheet Number: C1.1
Date: 10 April 2025
Drawn By: SBC
Checked By: SBC
Project Title: [Blank]



LEGEND

DESCRIPTION	EXISTING	NEW
BUILDING	[Solid Line]	[Dashed Line]
CURB & GUTTER	[Solid Line]	[Dashed Line]
CONCRETE PAVEMENT	[Solid Line]	[Dashed Line]
ASPHALT PAVEMENT	[Solid Line]	[Dashed Line]
SANITARY SEWER MANHOLE	[Circle]	[Circle]
GAS METER	[Circle]	[Circle]
GAS LINE	[Line]	[Line]
STORM MANHOLE	[Circle]	[Circle]
GRATE INLET	[Circle]	[Circle]
GRATE INLET	[Circle]	[Circle]
AREA INLET	[Circle]	[Circle]
STORM DRAIN LINE	[Line]	[Line]
CLEAN-OUT	[Line]	[Line]
WATER LINE	[Line]	[Line]
ELECTRIC (AERIAL)	[Line]	[Line]
ELECTRIC (UNDERGROUND)	[Line]	[Line]
WATER METER	[Circle]	[Circle]
FIRE HYDRANT	[Circle]	[Circle]
POWER POLE	[Circle]	[Circle]
50' WIRE	[Circle]	[Circle]
TRAFFIC SIGN	[Circle]	[Circle]
BUMPER POST	[Circle]	[Circle]
FENCE	[Line]	[Line]
BUSH	[Circle]	[Circle]
HEDGE ROW	[Line]	[Line]
TREE	[Circle]	[Circle]
PROJECT LIMITS	[Line]	[Line]

PAINT STRIPE LEGEND

- ① FINISH OF HIG. SOLID, NON-REFLECTIVE, WHITE PAINTED ISLAND WITH 4" WIDE SHADING, PAINTED STRIPES AT 3 FEET ON CENTER.
- ② FINISH OF HIG. SOLID, REFLECTIVE, WHITE PAINT STRIPES.
- ③ FINISH OF HIG. SOLID, WHITE PAINTED PARKING STRIPES, NON-REFLECTIVE.
- ④ FINISH OF HIG. SOLID, REFLECTIVE, WHITE PAINT STRIPES.

SS&L
 STATE STREET CONSULTANTS, INC.
 1000 W. UNIVERSITY BLVD., SUITE 200
 MONTGOMERY, AL 36102
 TEL: 205-263-2200
 FAX: 205-263-2201
 WWW.SS&L.COM

Rev.	Description	Date
1	ISSUE FOR PERMITS	11-20-20
2	FOR 1	1-21-20

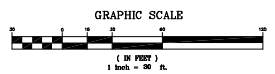
Job Number: 19084
 Date: 09/06/2022
 Drawn By: SBG
 Checked By: SBG
 Project File:

DEPLOYABLE PARTS STORAGE FACILITY
 DANNELLY FIELD
 MONTGOMERY, AL

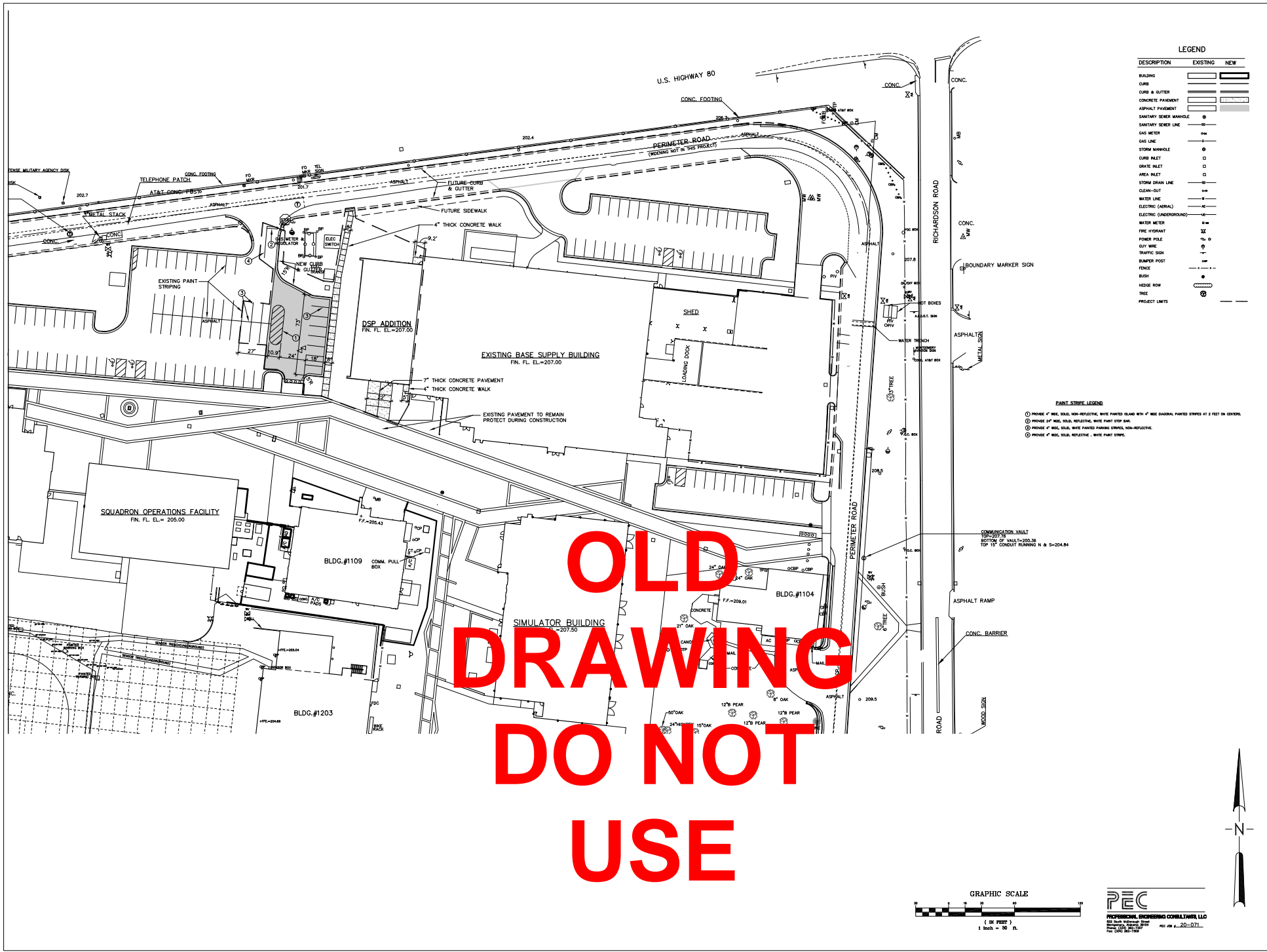
Draw Title: DSP SITE LAYOUT PLAN

Sheet Number:

C2.1



PEC
 PROFESSIONAL ENGINEERING CONSULTANTS, LLC
 800 SOUTH WASHINGTON STREET
 MONTGOMERY, AL 36102
 TEL: 205-263-2200
 FAX: 205-263-2201



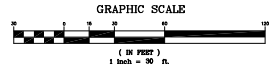
LEGEND

DESCRIPTION	EXISTING	NEW
BUILDING	[Solid black rectangle]	[Dashed black rectangle]
CURB	[Single line]	[Double line]
CURB & OUTER	[Single line]	[Double line]
CONCRETE PAVEMENT	[Dotted pattern]	[Dotted pattern]
ASPHALT PAVEMENT	[Horizontal lines]	[Horizontal lines]
SANITARY SEWER MANHOLE	[Circle with 'S']	[Circle with 'S']
SANITARY SEWER LINE	[Circle with 'S']	[Circle with 'S']
GAS METER	[Circle with 'G']	[Circle with 'G']
GAS LINE	[Circle with 'G']	[Circle with 'G']
STORM MANHOLE	[Circle with 'M']	[Circle with 'M']
CURB INLET	[Circle with 'I']	[Circle with 'I']
GRATE INLET	[Circle with 'I']	[Circle with 'I']
AREA INLET	[Circle with 'I']	[Circle with 'I']
STORM DRAIN LINE	[Circle with 'D']	[Circle with 'D']
CLEAN-OUT	[Circle with 'C']	[Circle with 'C']
WATER LINE	[Circle with 'W']	[Circle with 'W']
ELECTRIC (OVERHEAD)	[Circle with 'E']	[Circle with 'E']
ELECTRIC (UNDERGROUND)	[Circle with 'E']	[Circle with 'E']
WATER METER	[Circle with 'M']	[Circle with 'M']
FIRE HYDRANT	[Circle with 'H']	[Circle with 'H']
POWER POLE	[Circle with 'P']	[Circle with 'P']
OUT WIRE	[Circle with 'O']	[Circle with 'O']
TRAFFIC SIGN	[Circle with 'T']	[Circle with 'T']
BUMPER POST	[Circle with 'B']	[Circle with 'B']
FENCE	[Circle with 'F']	[Circle with 'F']
BUSH	[Circle with 'B']	[Circle with 'B']
HEDGE ROW	[Circle with 'H']	[Circle with 'H']
TREE	[Circle with 'T']	[Circle with 'T']
PROJECT LIMITS	[Dashed line]	[Dashed line]

PAINT STRIPE LEGEND

- ① PROVIDE 4" WIDE, SOLID, NON-REFLECTIVE, WHITE PAVED STRIPES WITH 4" WIDE DASHED, PAVED STRIPES AT 2 FEET ON CENTER.
- ② PROVIDE 3" WIDE, SOLID, REFLECTIVE, WHITE PAVT STOP BAR.
- ③ PROVIDE 4" WIDE, SOLID, WHITE PAVED PARKING STRIPES, NON-REFLECTIVE.
- ④ PROVIDE 4" WIDE, SOLID, REFLECTIVE, WHITE PAVT STRIPE.

**OLD
DRAWING
DO NOT
USE**



PEC
PROFESSIONAL ENGINEERING CONSULTANTS, LLC
82 South Interstate Blvd
Montgomery, AL 36107
Tel: (334) 841-7274

SS&L
ARCHITECTS ENGINEERS PLANNERS
1000 N. GARDNER STREET
MONTGOMERY, AL 36102
WWW.SS&L.COM
301.241.3111 FAX 301.241.3245

Proj. Description	Drawn	Checked	Scale
Deployable Parts Storage Facility			

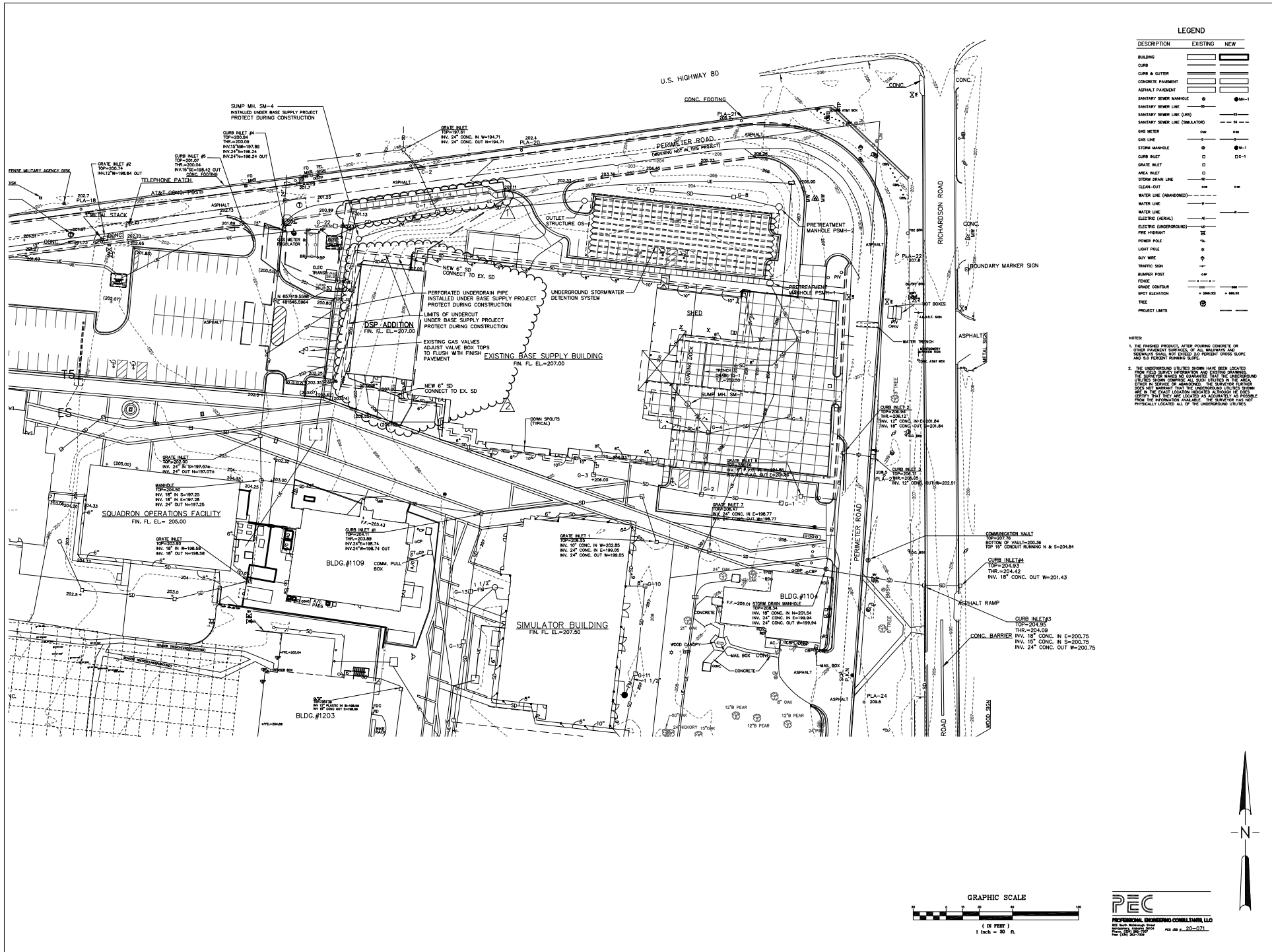
Proj. No: 19064
Date: 10 April 2025
Drawn By: 586
Checked By: 586
Project Title: _____

DEPLOYABLE PARTS STORAGE FACILITY
DANNELLY FIELD
MONTGOMERY, AL

Sheet Title: DSP SITE LAYOUT PLAN
Sheet Number: _____

C2.1

9/26/21



LEGEND

DESCRIPTION	EXISTING	NEW
BUILDING	[Symbol]	[Symbol]
CURB	[Symbol]	[Symbol]
CURB & GUTTER	[Symbol]	[Symbol]
CONCRETE PAVEMENT	[Symbol]	[Symbol]
ASPHALT PAVEMENT	[Symbol]	[Symbol]
SANITARY SEWER MANHOLE	[Symbol]	[Symbol]
SANITARY SEWER LINE	[Symbol]	[Symbol]
SANITARY SEWER LINE (USE)	[Symbol]	[Symbol]
SANITARY SEWER LINE (SIMULATOR)	[Symbol]	[Symbol]
GAS METER	[Symbol]	[Symbol]
STORM MANHOLE	[Symbol]	[Symbol]
GRATE INLET	[Symbol]	[Symbol]
AREA INLET	[Symbol]	[Symbol]
STORM DRAIN LINE	[Symbol]	[Symbol]
CLEAN-OUT	[Symbol]	[Symbol]
WATER LINE (ABANDONED)	[Symbol]	[Symbol]
WATER LINE	[Symbol]	[Symbol]
ELECTRIC (AERIAL)	[Symbol]	[Symbol]
ELECTRIC (UNDERGROUND)	[Symbol]	[Symbol]
FIRE HYDRANT	[Symbol]	[Symbol]
POWER POLE	[Symbol]	[Symbol]
LIGHT POLE	[Symbol]	[Symbol]
TRAFFIC SIGN	[Symbol]	[Symbol]
BURNER POST	[Symbol]	[Symbol]
FENCE	[Symbol]	[Symbol]
GRADE CONTROL	[Symbol]	[Symbol]
SPOT ELEVATION	[Symbol]	[Symbol]
TREE	[Symbol]	[Symbol]
PROJECT LIMITS	[Symbol]	[Symbol]

NOTES:

1. THE FINISHED PRODUCT, AFTER POURING CONCRETE OR OTHER PAVEMENT SURFACES, OF ALL MANHOLES AND SEWERS SHALL NOT EXCEED 3.0 PERCENT CROSS SLOPE AND 5.0 PERCENT RUNNING SLOPE.
2. THE UNDERGROUND UTILITIES SHOWN HAVE BEEN LOCATED FROM FIELD SURVEY INFORMATION AND SURVEY PLANNING. THE SURVEY WOULD NOT GUARANTEE THAT THE UNDERGROUND UTILITIES SHOWN CORRESPOND TO EXISTING UTILITIES IN THE AREA. EITHER IN KIND OR ABANDONED. THE SURVEY REPORT DOES NOT WARRANT THAT THE UNDERGROUND UTILITIES SHOWN ARE IN THE EXACT LOCATION INDICATED AS SHOWN ON THESE DRAWINGS THAT THEY ARE LOCATED AS ACCURATELY AS POSSIBLE FROM ALL INFORMATION AVAILABLE. THE SURVEYOR WILL NOT PHYSICALLY LOCATE ALL OF THE UNDERGROUND UTILITIES.

SS&L
 SURVEYING & SITE DESIGN
 1001 W. 25th St., Suite 100
 Montgomery, AL 36106
 WWW.SS&S.COM
 (205) 833-7777

Rev.	Description	Date
1	ADDITION	11-30-20
2	PR 1	1-21-22

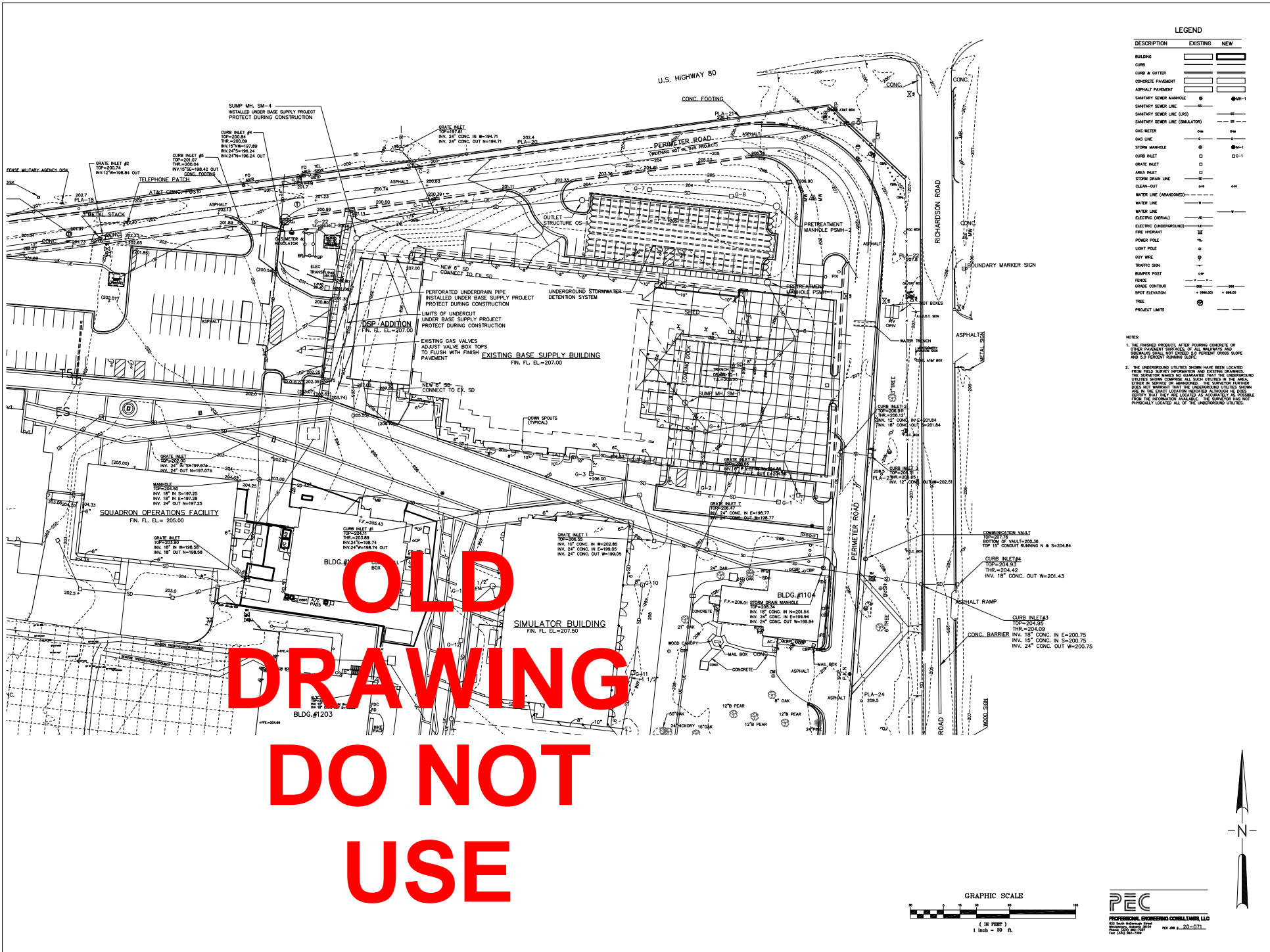
Job Number: 19084
 Date: 09/06/2022
 Drawn By: SBC
 Checked By: SBC
 Project File:

DEPLOYABLE PARTS STORAGE FACILITY
 DANNELLY FIELD
 MONTGOMERY, AL

Draw Title: DSP SITE GRADING AND DRAINAGE PLAN
 Draw Number: C3.1

PEC
 PROFESSIONAL ENGINEERING CONSULTANTS, LLC
 800 West Main Street
 Montgomery, AL 36102
 (205) 261-7700
 REG. NO. 20-071
 EXP. 12/31/2024

1/21/26

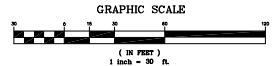


LEGEND

DESCRIPTION	EXISTING	NEW
BUILDING	[Solid black rectangle]	[Solid black rectangle]
CURB	[Dashed line]	[Dashed line]
CURB & GUTTER	[Dashed line with inward tick]	[Dashed line with inward tick]
CONCRETE PAVEMENT	[Hatched pattern]	[Hatched pattern]
ASPHALT PAVEMENT	[Dotted pattern]	[Dotted pattern]
SANITARY SEWER MANHOLE	[Circle with 'S']	[Circle with 'S']
SANITARY SEWER LINE	[Solid line]	[Solid line]
SANITARY SEWER LINE (SIMULATOR)	[Dashed line]	[Dashed line]
GAS METER	[Circle with 'G']	[Circle with 'G']
GAS LINE	[Dashed line]	[Dashed line]
STORM MANHOLE	[Circle with 'M']	[Circle with 'M']
CURB INLET	[Square with 'C']	[Square with 'C']
GRATE INLET	[Square with 'G']	[Square with 'G']
MAN INLET	[Circle with 'M']	[Circle with 'M']
STORM DRAIN LINE	[Solid line]	[Solid line]
CLEAN-OUT	[Dashed line]	[Dashed line]
WATER LINE (ABANDONED)	[Dashed line]	[Dashed line]
WATER LINE	[Solid line]	[Solid line]
ELECTRIC (AERIAL)	[Dashed line]	[Dashed line]
ELECTRIC (UNDERGROUND)	[Dashed line]	[Dashed line]
FIRE HYDRANT	[Circle with 'H']	[Circle with 'H']
POWER POLE	[Circle with 'P']	[Circle with 'P']
QUY WIRE	[Dashed line]	[Dashed line]
TRAFFIC SIGN	[Circle with 'T']	[Circle with 'T']
BLANKET POST	[Circle with 'B']	[Circle with 'B']
FENCE	[Dashed line]	[Dashed line]
GRADE ELEVATION	[Circle with 'E']	[Circle with 'E']
SPOT ELEVATION	[Circle with 'S']	[Circle with 'S']
TREE	[Circle with 'T']	[Circle with 'T']
PROJECT LIMITS	[Circle with 'P']	[Circle with 'P']

NOTES:

1. THE PREPARED PRODUCTS, AFTER POURING CONCRETE OR OTHER PAVEMENT SURFACES, OF ALL MANHOLE AND SEWERALS SHALL NOT EXCEED 2.5 PERCENT CROSS SLOPE AND 5.0 PERCENT RUNNING SLOPE.
2. THE UNDERGROUND UTILITIES SHOWN HAVE BEEN LOCATED FROM FIELD SURVEY INFORMATION AND EXISTING PLANS. THE SURVEYOR DOES NOT GUARANTEE THAT THE UNDERGROUND UTILITIES SHOWN CORRESPOND TO ALL UTILITIES IN THE AREA. THE SURVEYOR DOES NOT WARRANT THAT THE UNDERGROUND UTILITIES SHOWN ARE IN THE EXACT LOCATION INDICATED AS SHOWN OR AS CENTER. THE USER SHALL VERIFY AS ACCURATELY AS POSSIBLE FROM THE INFORMATION AVAILABLE AS TO WHETHER THE UTILITIES SHOWN ARE IN THE EXACT LOCATION INDICATED AS SHOWN OR AS CENTER.



PEC
PROFESSIONAL ENGINEERING CONSULTANTS, LLC
822 South Midland Blvd
Montgomery, AL 36117
Tel: (205) 261-7272
Fax: (205) 261-7272

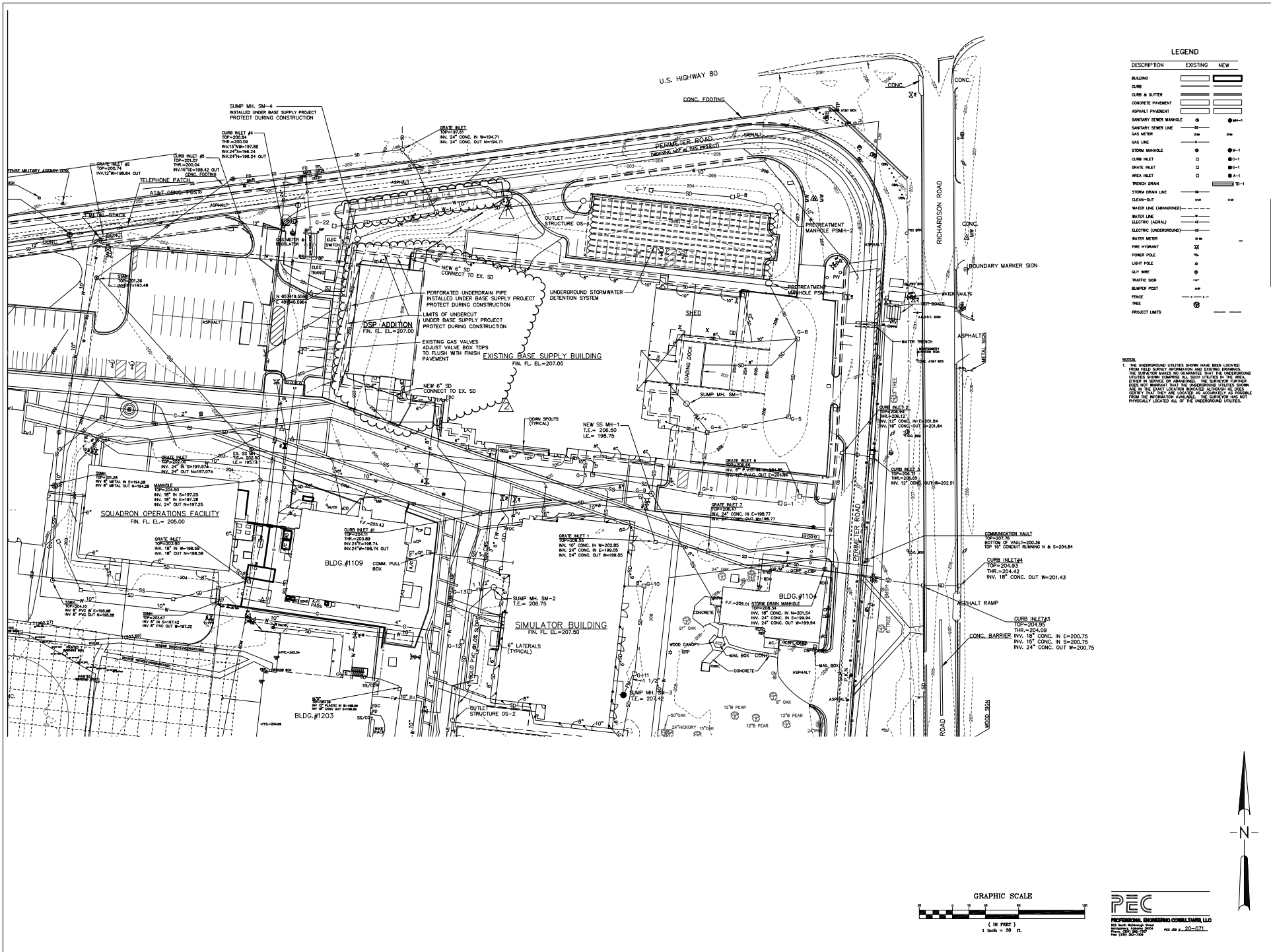
SS&L
SPECIAL SERVICES & SURVEYING, LLC
10101 JAMES H. BRIDGES BLVD., SUITE 100
MONTGOMERY, AL 36117
TEL: (205) 261-7272

Project Title: DSP SITE GRADING AND DRAINAGE PLAN
Sheet Number: C3.1

Author: J. N. Nappier
Date: 10 April 2025
Drawn By: J. N. Nappier
Checked By: J. N. Nappier
Project Title: DSP SITE GRADING AND DRAINAGE PLAN

DEPLOYABLE PARTS STORAGE FACILITY
DANNELLY FIELD
MONTGOMERY, AL

9/26/21



LEGEND

DESCRIPTION	EXISTING	NEW
BUILDING	[Symbol]	[Symbol]
CURB	[Symbol]	[Symbol]
CURB & GUTTER	[Symbol]	[Symbol]
CONCRETE PAVEMENT	[Symbol]	[Symbol]
ASPHALT PAVEMENT	[Symbol]	[Symbol]
SANITARY SEWER MANHOLE	[Symbol]	[Symbol]
GAS LINE	[Symbol]	[Symbol]
STONE MANHOLE	[Symbol]	[Symbol]
CURB INLET	[Symbol]	[Symbol]
AREA INLET	[Symbol]	[Symbol]
WRENCH OPEN	[Symbol]	[Symbol]
STORM DRAIN LINE	[Symbol]	[Symbol]
CLEAN-OUT	[Symbol]	[Symbol]
WATER LINE (ABANDONED)	[Symbol]	[Symbol]
WATER LINE	[Symbol]	[Symbol]
ELECTRIC (GENERAL)	[Symbol]	[Symbol]
ELECTRIC (UNDERGROUND)	[Symbol]	[Symbol]
WATER METER	[Symbol]	[Symbol]
FIRE HYDRANT	[Symbol]	[Symbol]
POWER POLE	[Symbol]	[Symbol]
LIGHT POLE	[Symbol]	[Symbol]
GUY WIRE	[Symbol]	[Symbol]
TRANSIT POST	[Symbol]	[Symbol]
RAILWAY SIGN	[Symbol]	[Symbol]
FENCE	[Symbol]	[Symbol]
TREE	[Symbol]	[Symbol]
PROJECT LIMITS	[Symbol]	[Symbol]

NOTES

- THE UNDERGROUND UTILITIES SHOWN HAVE BEEN LOCATED FROM FIELD SURVEY INFORMATION AND EXISTING UNDERGROUND UTILITIES SHOWN COORDINATE ALL SUCH UTILITIES IN THE AREA OTHER IN SERVICE OR ABANDONED. THE SURVEYOR HAS MADE AN ATTEMPT TO VERIFY THE LOCATION OF ALL UTILITIES SHOWN AND IN THE EXACT LOCATION SUGGESTED AS MUCH AS POSSIBLE FROM THE INFORMATION AVAILABLE. THE SURVEYOR HAS NOT PHYSICALLY LOCATED ALL OF THE UNDERGROUND UTILITIES.

SS&L
 SURVEYING & SITE DESIGN, INC.
 1001 W. 25th Street, Suite 100
 Montgomery, AL 36104
 Phone: (205) 833-1111
 Fax: (205) 833-1112
 Website: www.ssandl.com

LEGEND

DESCRIPTION	EXISTING	NEW
BUILDING	[Symbol]	[Symbol]
CURB	[Symbol]	[Symbol]
CURB & GUTTER	[Symbol]	[Symbol]
CONCRETE PAVEMENT	[Symbol]	[Symbol]
ASPHALT PAVEMENT	[Symbol]	[Symbol]
SANITARY SEWER MANHOLE	[Symbol]	[Symbol]
GAS LINE	[Symbol]	[Symbol]
STONE MANHOLE	[Symbol]	[Symbol]
CURB INLET	[Symbol]	[Symbol]
AREA INLET	[Symbol]	[Symbol]
WRENCH OPEN	[Symbol]	[Symbol]
STORM DRAIN LINE	[Symbol]	[Symbol]
CLEAN-OUT	[Symbol]	[Symbol]
WATER LINE (ABANDONED)	[Symbol]	[Symbol]
WATER LINE	[Symbol]	[Symbol]
ELECTRIC (GENERAL)	[Symbol]	[Symbol]
ELECTRIC (UNDERGROUND)	[Symbol]	[Symbol]
WATER METER	[Symbol]	[Symbol]
FIRE HYDRANT	[Symbol]	[Symbol]
POWER POLE	[Symbol]	[Symbol]
LIGHT POLE	[Symbol]	[Symbol]
GUY WIRE	[Symbol]	[Symbol]
TRANSIT POST	[Symbol]	[Symbol]
RAILWAY SIGN	[Symbol]	[Symbol]
FENCE	[Symbol]	[Symbol]
TREE	[Symbol]	[Symbol]
PROJECT LIMITS	[Symbol]	[Symbol]

Job Number: 19084
 Date: 09/06/2022
 Drawn By: SBG
 Checked By: SBG
 Project File:

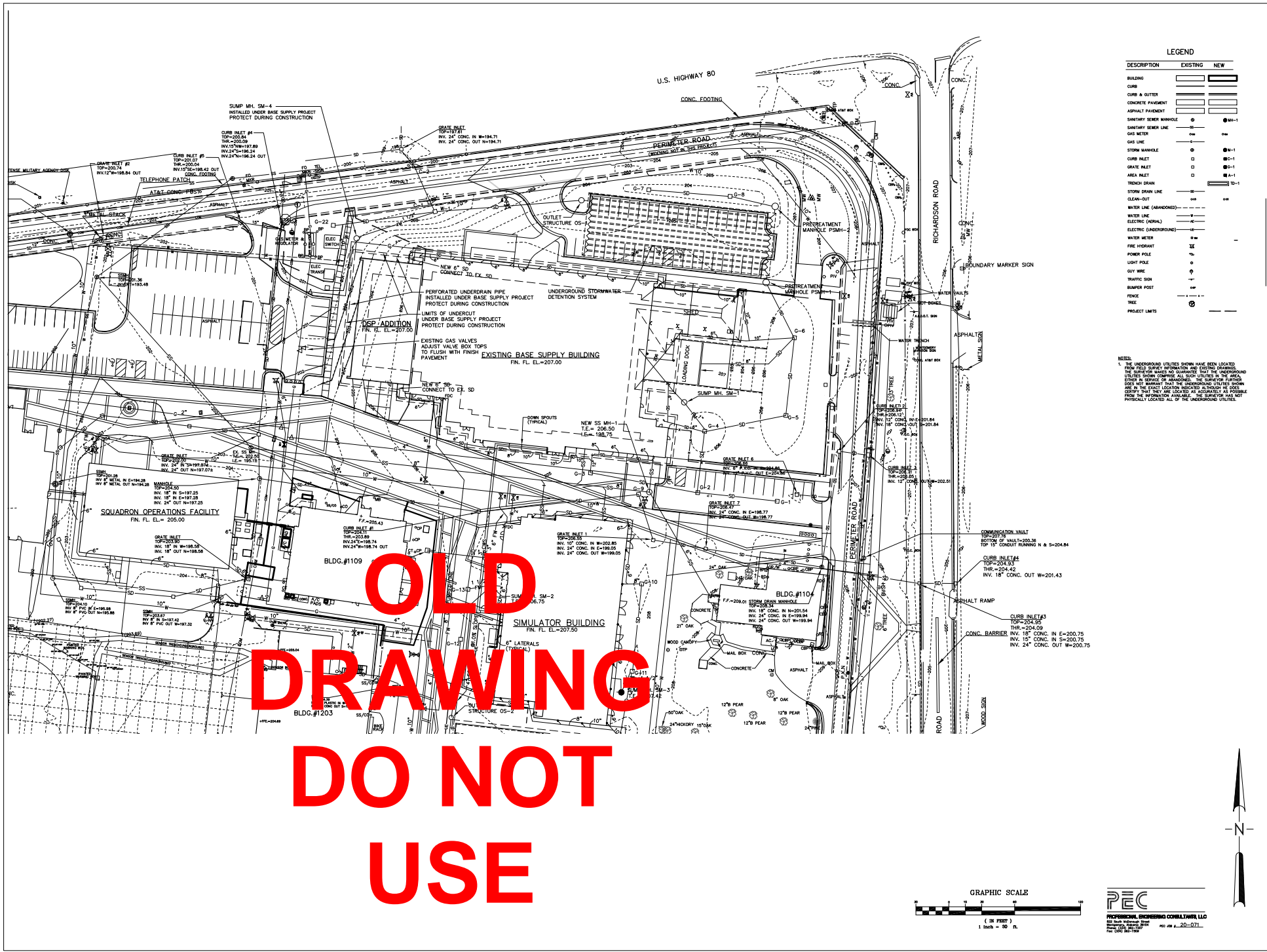
DEPLOYABLE PARTS STORAGE FACILITY
 DANNELLY FIELD
 MONTGOMERY, AL

Draw Title: DSP SITE UTILITIES PLAN
 Draw Number: C4.1

PEC
 PROFESSIONAL ENGINEERING CONSULTANTS, LLC
 80 South Main Street
 Montgomery, AL 36102
 Phone: (205) 261-7900
 Fax: (205) 261-7900
 License No. 23109
 License Type: PROFESSIONAL ENGINEER
 License State: ALABAMA

1/21/28

**OLD
DRAWING
DO NOT
USE**

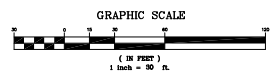


LEGEND

DESCRIPTION	EXISTING	NEW
BUILDING	[Symbol]	[Symbol]
CURB & GUTTER	[Symbol]	[Symbol]
CONCRETE PAVEMENT	[Symbol]	[Symbol]
ASPHALT PAVEMENT	[Symbol]	[Symbol]
SANITARY SEWER LINE	[Symbol]	[Symbol]
GAS METER	[Symbol]	[Symbol]
GAS LINE	[Symbol]	[Symbol]
STORM MANHOLE	[Symbol]	[Symbol]
CURB INLET	[Symbol]	[Symbol]
AREA INLET	[Symbol]	[Symbol]
TRUCK DRAIN	[Symbol]	[Symbol]
STORM DRAIN LINE	[Symbol]	[Symbol]
CLEAN-OUT	[Symbol]	[Symbol]
WATER LINE (ABANDONED)	[Symbol]	[Symbol]
WATER LINE	[Symbol]	[Symbol]
ELECTRIC (OVERHEAD)	[Symbol]	[Symbol]
ELECTRIC (UNDERGROUND)	[Symbol]	[Symbol]
WATER METER	[Symbol]	[Symbol]
FIRE HYDRANT	[Symbol]	[Symbol]
POWER POLE	[Symbol]	[Symbol]
LIGHT POLE	[Symbol]	[Symbol]
GUY WIRE	[Symbol]	[Symbol]
TRAFFIC SIGN	[Symbol]	[Symbol]
BUMP POLE	[Symbol]	[Symbol]
FENCE	[Symbol]	[Symbol]
TREE	[Symbol]	[Symbol]
PROJECT LIMITS	[Symbol]	[Symbol]

NOTES

1. THE UNDERGROUND UTILITIES SHOWN HAVE BEEN LOCATED FROM FIELD SURVEY INFORMATION AND EXISTING UNDERGROUND UTILITIES SHOWN ON PLANS. ALL SUCH UTILITIES IN THE AREA OTHER THAN SEWER OR WATER, THE SURVEY PARTNER HAS NOT BEEN ADVISED THAT THE UTILITIES SHOWN ARE IN THE EXACT LOCATION INDICATED ALTHOUGH HE CAN CONFIRM THAT THEY ARE LOCATED AS ACCURATELY AS POSSIBLE FROM THE INFORMATION AVAILABLE. THE SURVEYOR HAS NOT PHYSICALLY LOCATED ALL OF THE UNDERGROUND UTILITIES.



PEC
 PROFESSIONAL ENGINEERING CONSULTANTS, LLC
 82 South Industrial Blvd
 Montgomery, AL 36117
 Tel: (334) 847-7200

SS&L
 SURVEYING & SITE ANALYSIS
 2017 W. JAY BLVD. | DTD 10/11/2018

Project Title: **DSP SITE UTILITIES PLAN**

Sheet Number: **C4.1**

Date: 10 April 2025

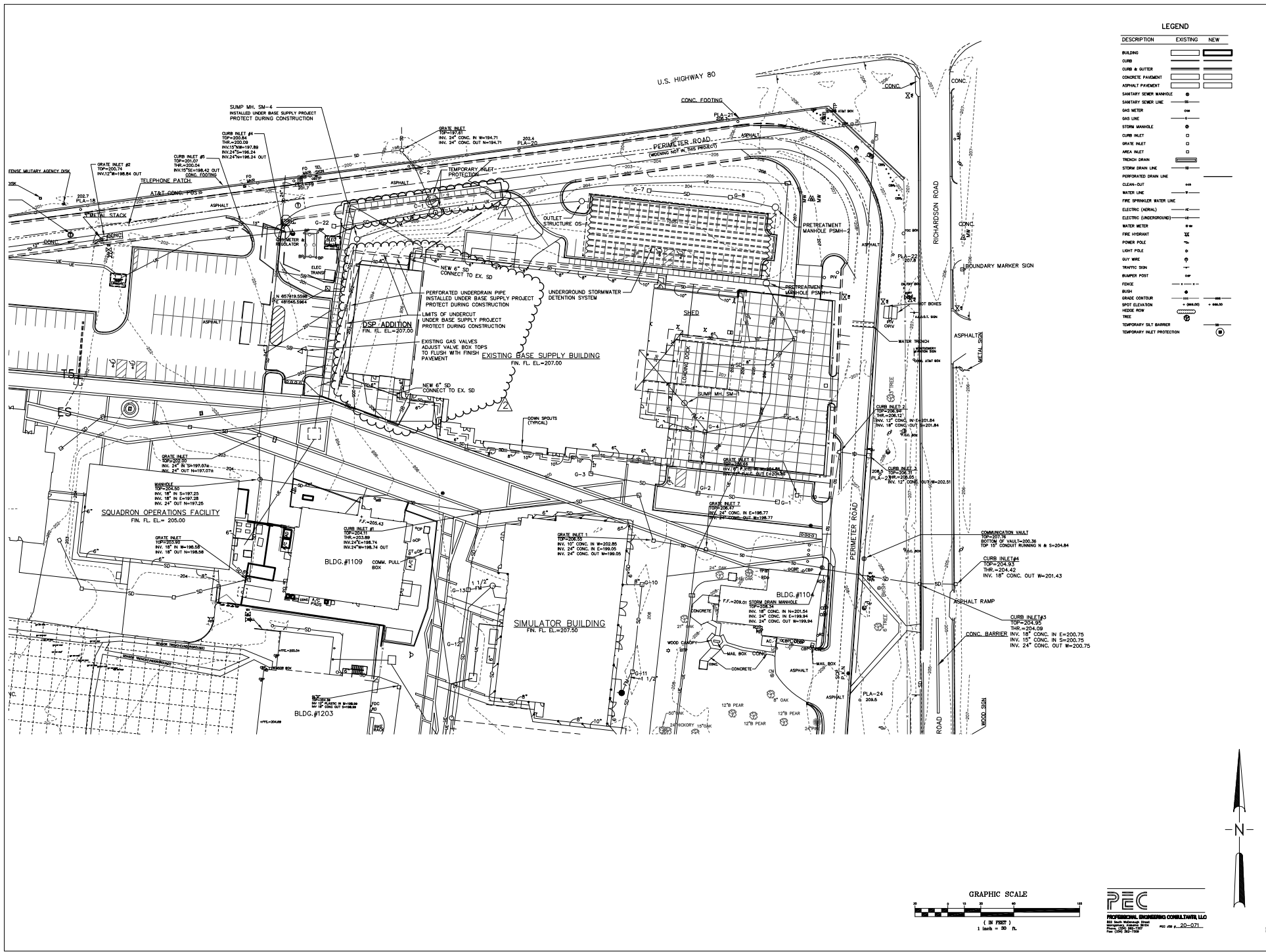
Drawn By: SDC

Checked By: SDC

Project File:

Deployable Parts Storage Facility
 Dannelly Field
 Montgomery, AL

05/06/21



LEGEND

DESCRIPTION	EXISTING	NEW
BUILDING	[Symbol]	[Symbol]
CURB	[Symbol]	[Symbol]
CURB & GUTTER	[Symbol]	[Symbol]
CONCRETE PAVEMENT	[Symbol]	[Symbol]
ASPHALT PAVEMENT	[Symbol]	[Symbol]
SANITARY SEWER MANHOLE	[Symbol]	[Symbol]
SANITARY SEWER LINE	[Symbol]	[Symbol]
GAS METER	[Symbol]	[Symbol]
GAS LINE	[Symbol]	[Symbol]
STORM MANHOLE	[Symbol]	[Symbol]
CURB INLET	[Symbol]	[Symbol]
AREA INLET	[Symbol]	[Symbol]
TRENCH DRAIN	[Symbol]	[Symbol]
STORM DRAIN	[Symbol]	[Symbol]
PERFORATED DRAIN LINE	[Symbol]	[Symbol]
CLEAN-OUT	[Symbol]	[Symbol]
WATER LINE	[Symbol]	[Symbol]
FIRE SPRINKLER WATER LINE	[Symbol]	[Symbol]
ELECTRIC (AERIAL)	[Symbol]	[Symbol]
ELECTRIC (UNDERGROUND)	[Symbol]	[Symbol]
WATER METER	[Symbol]	[Symbol]
FIRE HYDRANT	[Symbol]	[Symbol]
POWER POLE	[Symbol]	[Symbol]
LIGHT POLE	[Symbol]	[Symbol]
GUY WIRE	[Symbol]	[Symbol]
TRAFFIC SIGN	[Symbol]	[Symbol]
BURNER POST	[Symbol]	[Symbol]
FENCE	[Symbol]	[Symbol]
BUSH	[Symbol]	[Symbol]
GRADE CONTOUR	[Symbol]	[Symbol]
SPOT ELEVATION	[Symbol]	[Symbol]
FIELD ROW	[Symbol]	[Symbol]
TREE	[Symbol]	[Symbol]
TEMPORARY S&T BARRIER	[Symbol]	[Symbol]
TEMPORARY INLET PROTECTION	[Symbol]	[Symbol]

SS&L
 STATE STREET CONSULTANTS, INC.
 1000 17th Street, Suite 200
 Montgomery, AL 36103-2000
 TEL: 334-252-3333 FAX: 334-252-3334

Rev	Description	Date
2	ISS 1	11-21-20

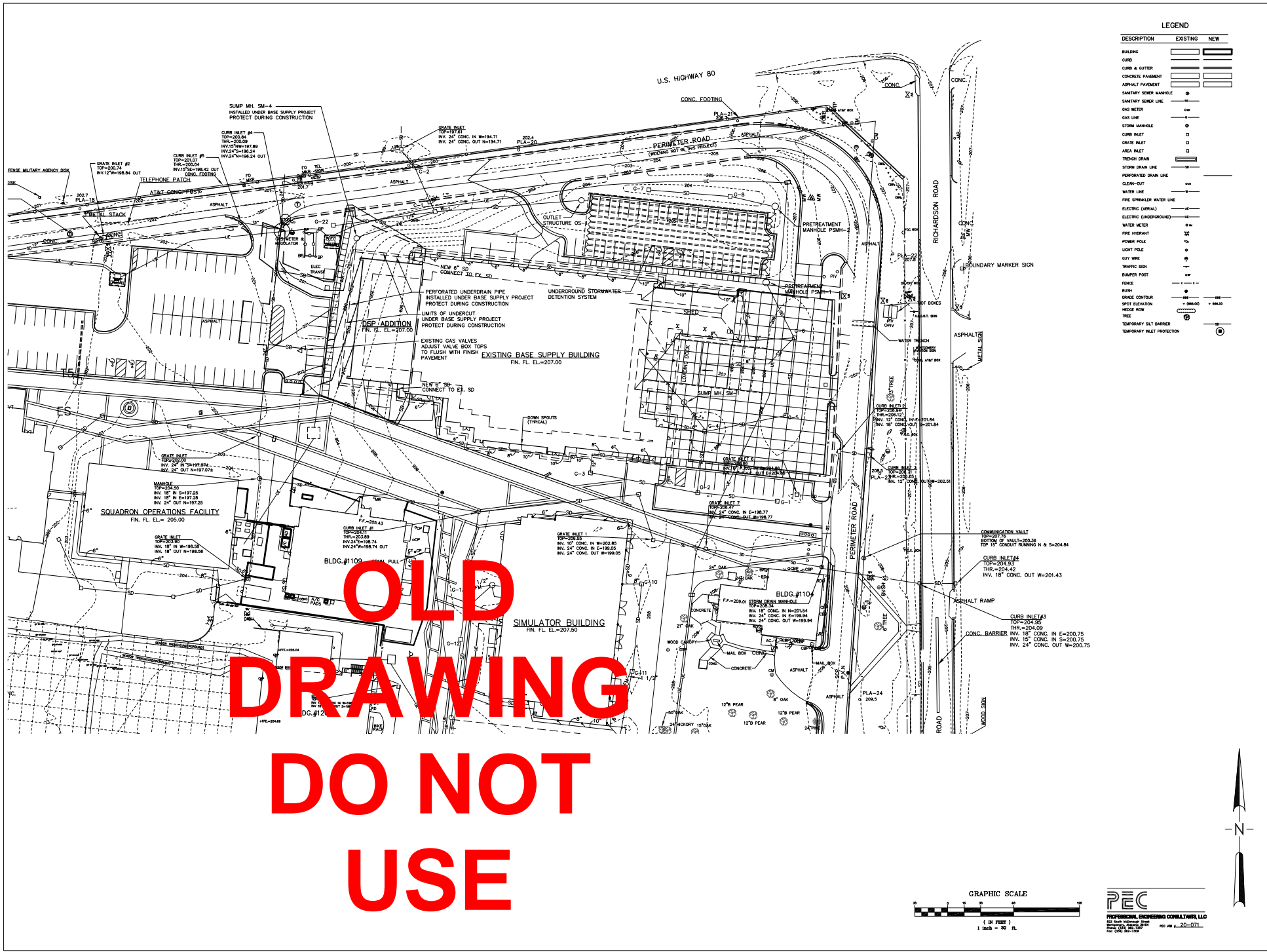
Job Number: 19084
 Date: 09/06/2022
 Drawn By: SBC
 Checked By: SBC
 Project File:

DEPLOYABLE PARTS STORAGE FACILITY
DANNELLY FIELD
MONTGOMERY, AL

Draw Title: DSP SITE EROSION & SEDIMENT CONTROL PLAN
 Draw Number: C5.1

PEC
 PROFESSIONAL ENGINEERING CONSULTANTS, LLC
 80 South Main Street
 Montgomery, AL 36102
 TEL: 334-277-8877 FAX: 334-277-8878

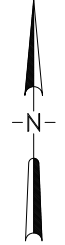
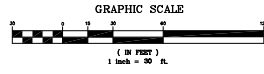
1/21/26



OLD
 DRAWING
 DO NOT
 USE

LEGEND

DESCRIPTION	EXISTING	NEW
BUILDING	[Symbol]	[Symbol]
CURB	[Symbol]	[Symbol]
CURB & GUTTER	[Symbol]	[Symbol]
CONCRETE PAVEMENT	[Symbol]	[Symbol]
ASPHALT PAVEMENT	[Symbol]	[Symbol]
SANITARY SEWER MANHOLE	[Symbol]	[Symbol]
SANITARY SEWER LINE	[Symbol]	[Symbol]
GAS METER	[Symbol]	[Symbol]
GAS LINE	[Symbol]	[Symbol]
STORM MANHOLE	[Symbol]	[Symbol]
CURB INLET	[Symbol]	[Symbol]
GRATE INLET	[Symbol]	[Symbol]
AREE INLET	[Symbol]	[Symbol]
TRENCH DRAIN	[Symbol]	[Symbol]
STORM DRAIN LINE	[Symbol]	[Symbol]
PERFORATED DRAIN LINE	[Symbol]	[Symbol]
CLEAN-OUT	[Symbol]	[Symbol]
WATER LINE	[Symbol]	[Symbol]
FIRE SPRINKLER WATER LINE	[Symbol]	[Symbol]
ELECTRIC (AERIAL)	[Symbol]	[Symbol]
ELECTRIC (UNDERGROUND)	[Symbol]	[Symbol]
WATER METER	[Symbol]	[Symbol]
FIRE HYDRANT	[Symbol]	[Symbol]
POWER POLE	[Symbol]	[Symbol]
LIGHT POLE	[Symbol]	[Symbol]
GUY WIRE	[Symbol]	[Symbol]
TRAFFIC SIGN	[Symbol]	[Symbol]
BURNER POST	[Symbol]	[Symbol]
FENCE	[Symbol]	[Symbol]
BUSH	[Symbol]	[Symbol]
GRADE CONTROL	[Symbol]	[Symbol]
SPOT ELEVATION	[Symbol]	[Symbol]
REDEE ROW	[Symbol]	[Symbol]
TREE	[Symbol]	[Symbol]
TEMPORARY SILT BARRIER	[Symbol]	[Symbol]
TEMPORARY INLET PROTECTION	[Symbol]	[Symbol]



SS&L

SOUTHWESTERN SURVEYING & ENGINEERING, INC.
 2417 W. 10th Street, Suite 100
 Phoenix, AZ 85015
 TEL: 602.998.1111 FAX: 602.998.1112 WWW.SS&L.COM

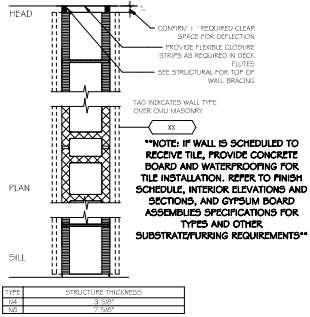
19064
 10 April 2025
 19064
 19064

DEPLOYABLE PARTS STORAGE FACILITY
 DANNELLY FIELD
 MONTGOMERY AL

Sheet Title
 DSP SITE PLAN

Sheet Number
C5.1

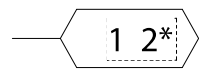
TYPE N



FLOOR PLAN LEGEND

- ROOM/OUT AND DOOR
- ⊕ DOOR TAG
- SECTION/DETAIL TAG
- ◇ CURTAIN WALL/STREET FRONT TAG
- BD BOLLARD
- RB REMOVABLE BOLLARD
- WALL TAG
- ⊞ SPECIFIC NOTE TAG
- I Gypsum CONTROL JOINT - REFER TO DETAIL 6A5.4
- I MGI MASONRY CONTROL JOINT - REFER TO NO. 1, PROVIDE TYPE V SEALANT.

PARTITION TAG LEGEND



1. THE FIRST CHARACTER IN THE TAG REFERENCES THE PARTITION TYPE.
 2. THE SECOND CHARACTER IN THE TAG REFERENCES THE THICKNESS OF THE STRUCTURE (E.G. METAL STUD, WOOD, ETC.).
- REFER TO INTERIOR ELEVATIONS AND ASSOCIATED WALL SECTIONS AND DETAILS FOR ADDITIONAL FINISHING REQUIREMENTS AND FINISHES NOT SHOWN ON WALL TYPE PLAN SCHEDULE.
- *NOTE - REFER TO LIFE SAFETY PLAN FOR PARTITION RATINGS****

GENERAL NOTES:

1. REFER TO EXTERIOR WALL SECTIONS FOR WALL ASSEMBLIES.
 2. UNLESS SPECIFICALLY NOTED OTHERWISE, ALL WALLS (INCLUDING STRUCTURE, FINISH, AND INSULATION) SHALL EXTEND TO UNDERSIDE OF ROOF DECK ABOVE.
 3. ALL WALLS TO RUN FULL HEIGHT TO STRUCTURE ABOVE. COORDINATE OPENINGS TO ACCOMMODATE MECHANICAL, SEAL ALL PLUMBING, MECHANICAL, ELECTRICAL, AND FIRE PROTECTION PENETRATIONS.
 4. FOR EXTERIOR WALL DILATION JOINTS SEE EXTERIOR ELEVATIONS.
- DIMENSION NOTES:**
- INTERIOR STUD WALLS ARE DIMENSIONED TO THE CENTER LINE OF THE WALL
 - EXTERIOR WALLS ARE DIMENSIONED TO THE OUTSIDE FACE OF THE STUDS OR CMU.

ROOF PLAN LEGEND

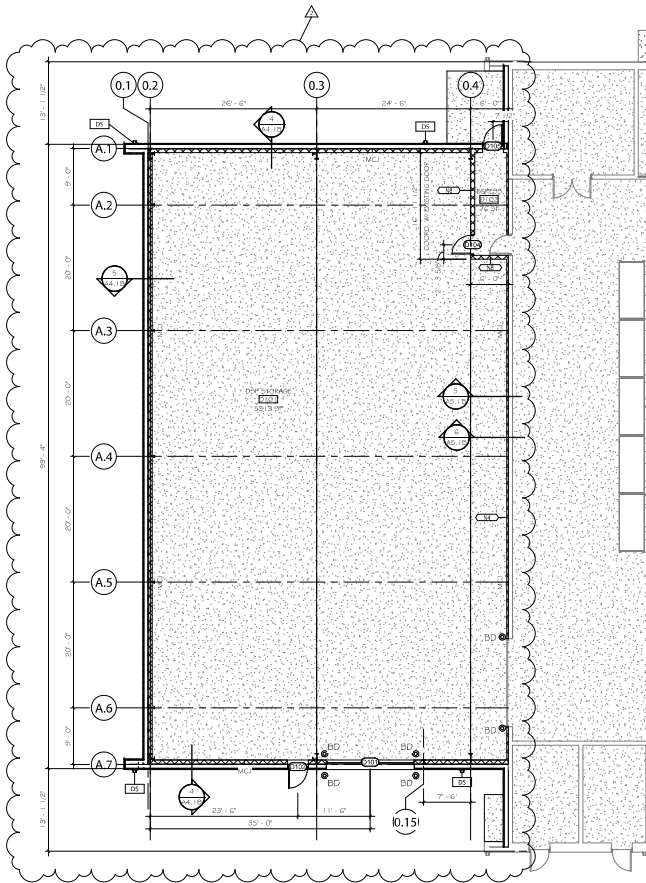
- STANDING SEAM METAL ROOF - SEAMS FOR SEALS ON METAL ROOF TYPES. REFER TO SPECS FOR PANEL SIZES.
- DOWNPOUT # 4 BOOTS SEALS NOT SHOWN (NOTE: REFER TO ELECTRICAL FOR LIGHTNING PROTECTION - COORDINATE AS REQUIRED)
- VENT TO ROOF - SEE MECHANICAL/PLUMBING # 5A5.1B AND 6A5.1B

GENERAL NOTES

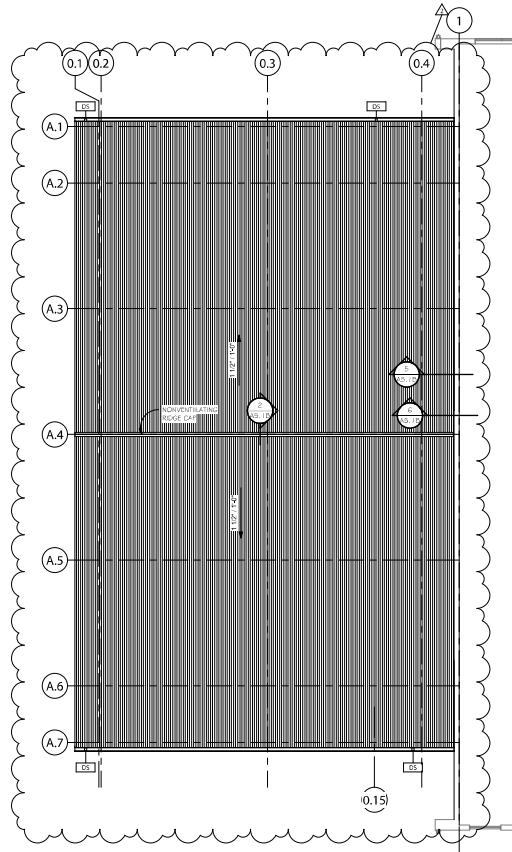
- NOTE 1 - LOCATE ALL PENETRATIONS THROUGH METAL ROOF PANELS AT MIDPOINT IN ROOF PANEL.
- NOTE 2 - REFER TO ELECTRICAL FOR LIGHTNING PROTECTION - COORDINATE AS REQUIRED.

CEILING MATERIAL LEGEND

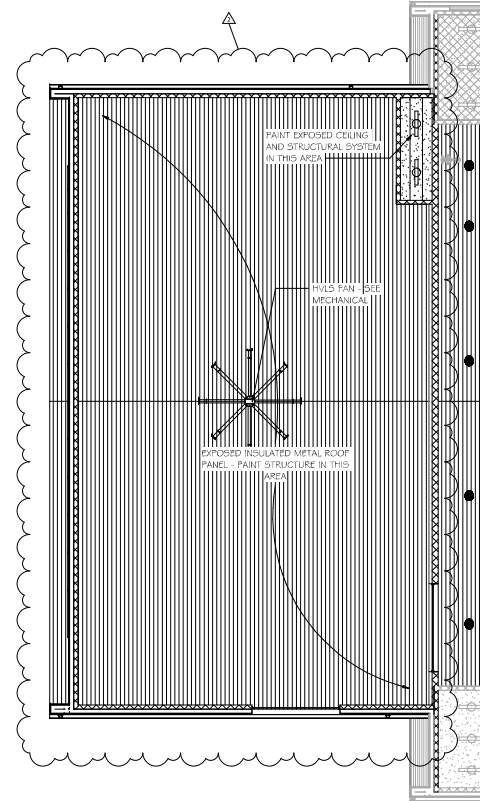
- LIGHT FIXTURE - SEE ELECTRICAL
- ⊞ SUPPLY DIFFUSER - SEE MECH.
- RETURN DIFFUSER - SEE MECH.



1 DSP STORAGE ADDITION - FLOOR PLAN
1/8" = 1'-0"



2 DSP STORAGE ADDITION - ROOF PLAN
1/8" = 1'-0"



3 DSP REFLECTED CEILING PLAN
1/8" = 1'-0"

NO.	DESCRIPTION	DATE
1	ADD #1	1-30-23
2	PR #1	2-2-23

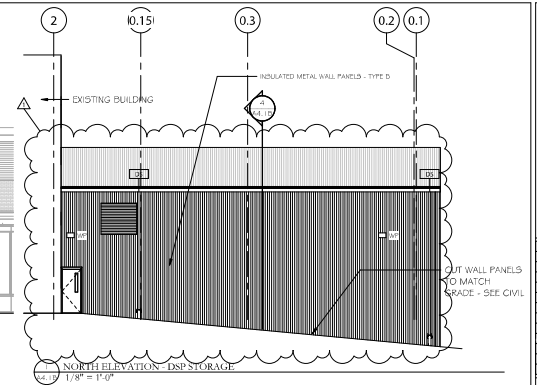
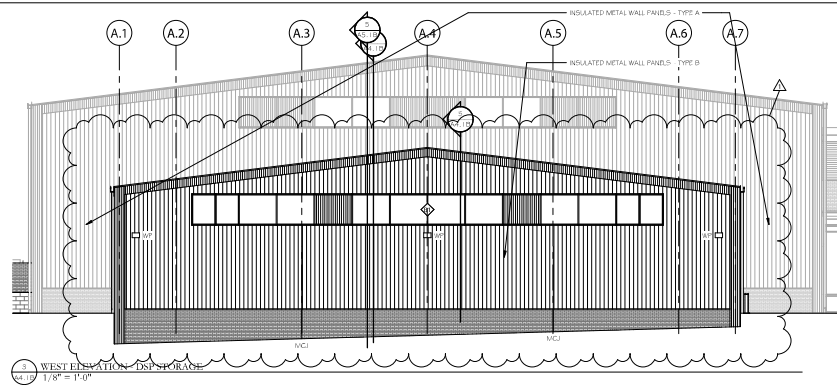
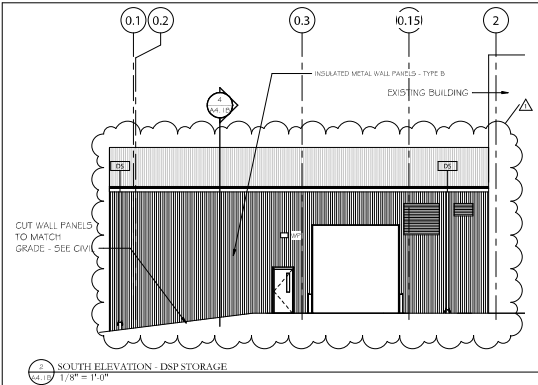
Job Number 19004
Date 10 April, 2023
Drawn By JLUICP74
Checked By
Project Title

Sheet Title
PLANS - DSP STORAGE

Sheet Number

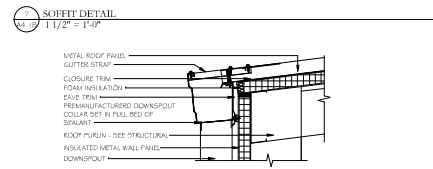
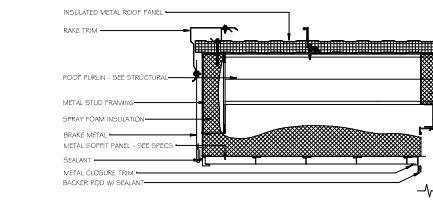
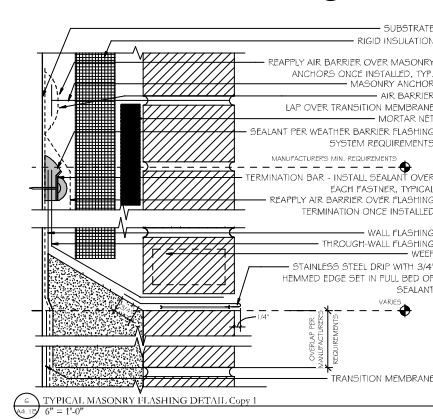
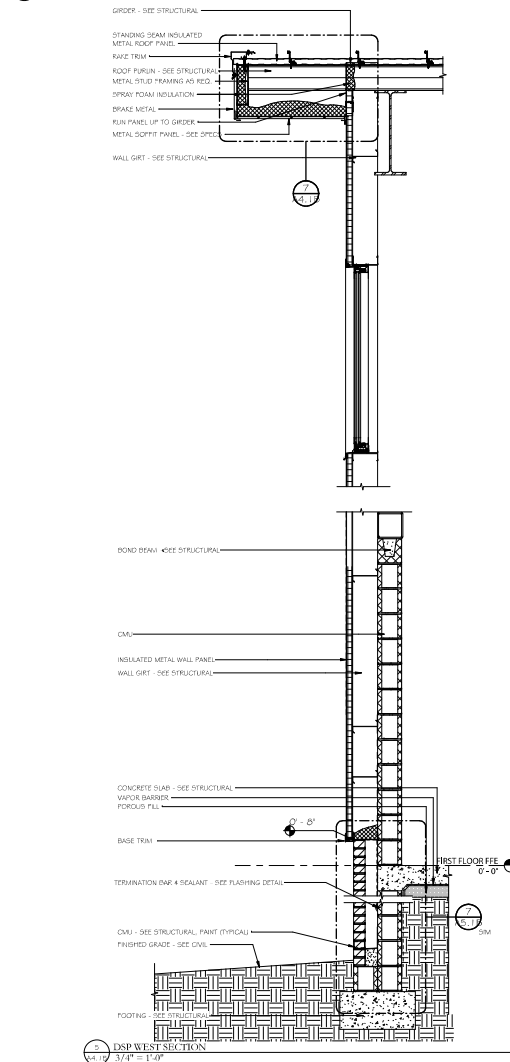
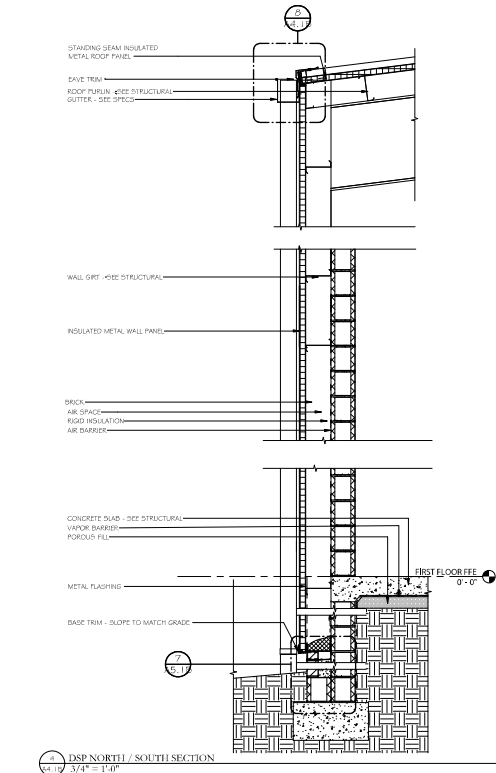
A2.1B





ELEVATION LEGEND

- LOUVER
- INSULATED METAL WALL PANEL (TYPE A) - SEE SPECIFICATION SECTION 07 421 4
- BRICK MASONRY
- CAST-STONE MASONRY
- METAL WALL PANEL
- HATCHED AREA INDICATES LOCATIONS TO RECEIVE OPERABLE MESH - SEE SPEC SECTION 1.2.
- INSULATED METAL WALL PANEL (TYPE B) - SEE SPECIFICATION SECTION 07 421 4
- WP WALL PACK - SEE ELECTRICAL - PROVIDE TYPE II SEALANT AT PERIMETER OF RUTURE
- WV WALL VENT - SEE MECHANICAL



Rev.	Description	Date
01	ISSUE FOR PERMITS	2-2-20
02	ISSUE FOR PERMITS	2-2-20

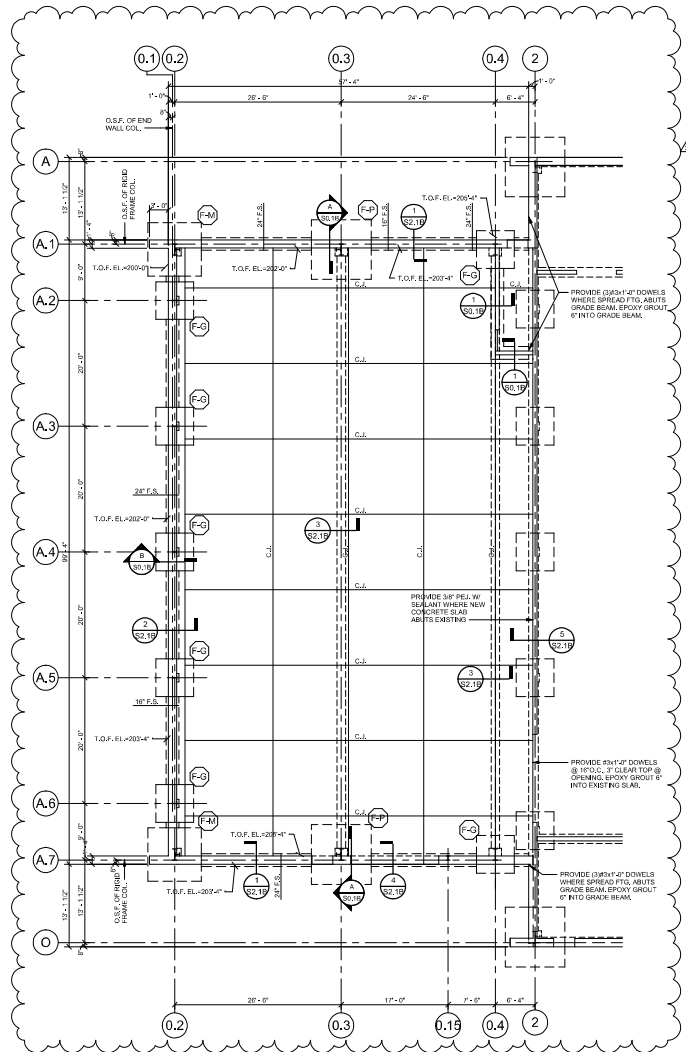
Job Number: 19004
Date: 10 April, 2025
Drawn By: JLUICP74
Checked By: FUL
Project Title:

Sheet Title:
DSP STORAGE
ELEVATIONS AND
SECTIONS

Sheet Number:

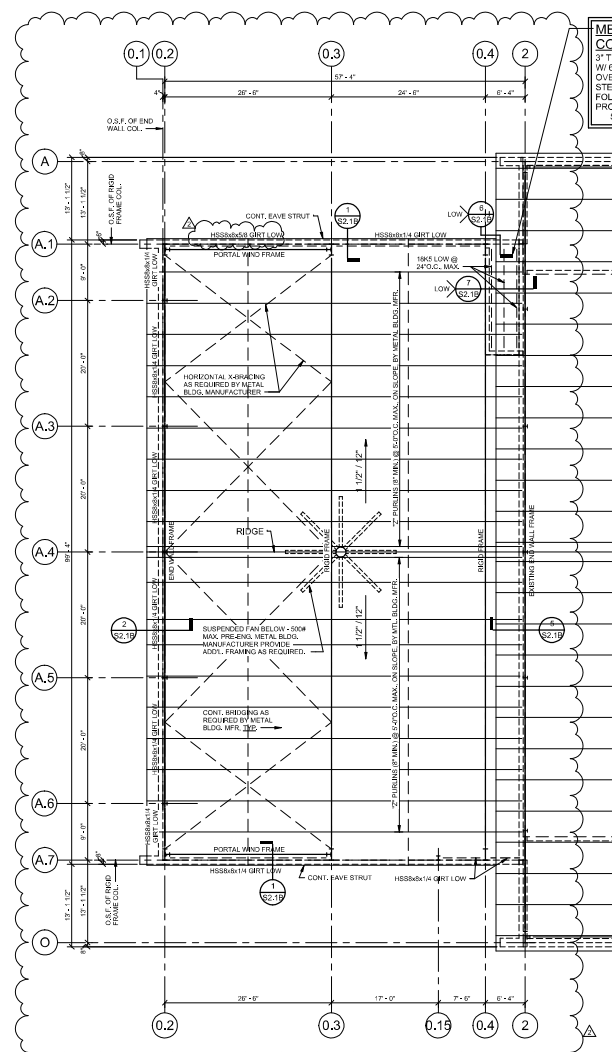
A4.1B





1 DPS - Foundation Plan
1/8" = 1'-0"

FLOOR CONSTRUCTION
 3" THICK CONCRETE SLAB W/ 6x6x1/2" RW/2.3 W.W.F.
 OVER VAPOR BARRIER OVER 4" POROUS FILL
 FINISH FLOOR EL. = 207'-0" (+0'-0")



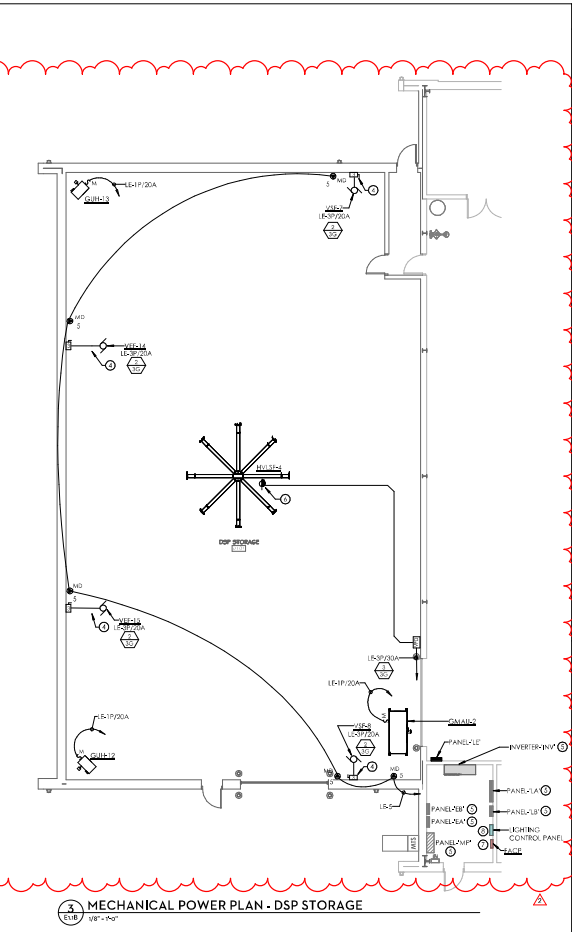
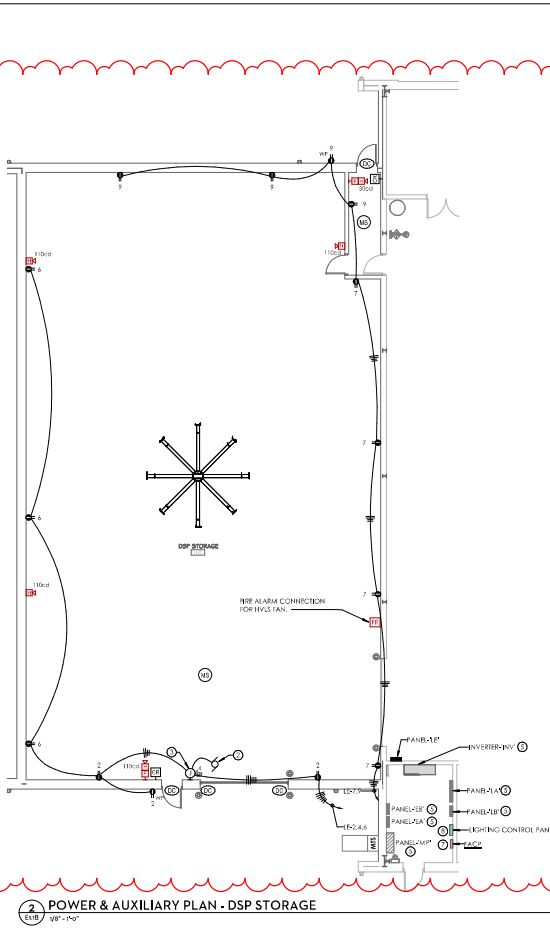
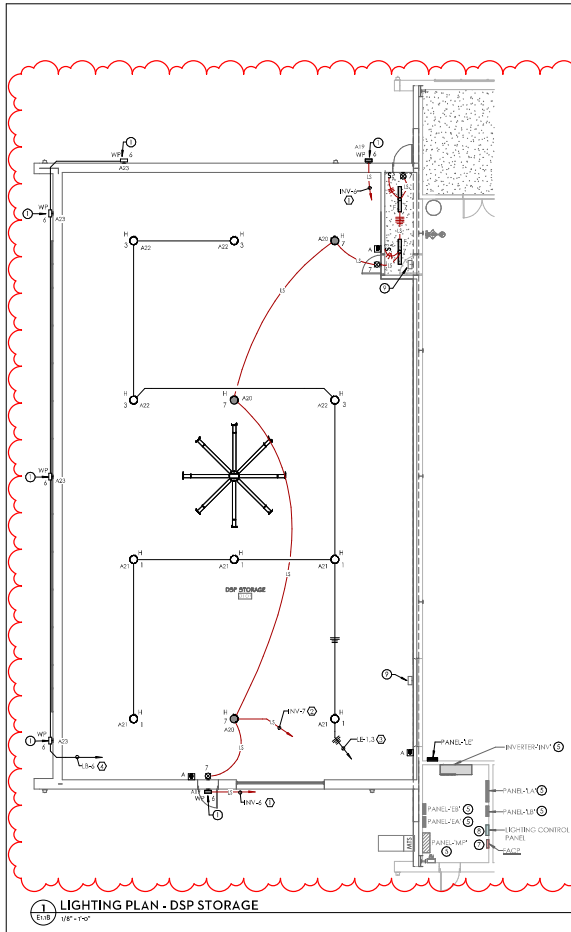
2 DPS - Roof Framing Plan
1/8" = 1'-0"

MEZZANINE FLOOR CONSTRUCTION
 3" THICK NORMAL WEIGHT CONCRETE SLAB
 W/ 6x6x1/2" RW/2.3 W.W.F., 3/4" CLEAR TOP
 OVER STANDARD GALVANIZED, 28 GAGE
 STEEL FORM DECK (3" TOTAL), W/ THE
 FOLLOWING MINIMUM SECTION
 PROPERTIES PER FOOT OF WIDTH:
 S=0.058 IN⁴, Sx=0.057 IN³, I=0.0111 IN⁶.

No.	Description	Date
1	ISSUED FOR PERMIT	02/02/2021
2	REVISION	01/15/20

Job Number: 1900-4
 Date: 02/02/2021
 Drawn By:
 Checked By:
 Project Title:





1 LIGHTING PLAN - DSP STORAGE
WP-100

2 POWER & AUXILIARY PLAN - DSP STORAGE
WP-100

3 MECHANICAL POWER PLAN - DSP STORAGE
WP-100

- LIGHTING CIRCUIT SCHEDULE**
- INVA THRU RELAY A1 IN LIGHTING CONTROL PANEL.
 - INVA THRU RELAY A2 IN LIGHTING CONTROL PANEL.
 - LE-1,2,3 THRU RELAYS A2 & A22 IN LIGHTING CONTROL PANEL.
 - LE-4 THRU RELAY A23 IN LIGHTING CONTROL PANEL.

KEYED NOTES:

- MOUNT WALL PACK AT APPROXIMATELY 12" ABOVE FINISHED GRADE.
- POWER CONNECTION FOR ROLLUP DOOR VERIFY DOOR AND MOTOR REQUIREMENTS WITH ARCHITECT AND OWNER.
- INTEGRATING JUNCTION BOX FISH W/CHAINED AT 45° A 2" TO TOP OF BOX FOR DOOR CONNECTIONS. USE 3/4" CONDUIT TO DOORS/MOTOR AS REQUIRED.
- DISCONNECT FOR FAN. MOUNT DISCONNECT ADJACENT TO FAN/MOTOR STARTER. VERIFY EXACT LOCATION OF MOTOR STARTER WITH MECHANICAL.
- EXISTING ELECTRICAL PANELS TO REMAIN. PROVIDE BREAKER IN PANEL AS REQUIRED.
- RECEIPTS FOR WHEE FAN. MOUNT RECEIPTS TO STRUCTURE ADJACENT TO FAN.
- EXISTING FIRE ALARM PANEL TO REMAIN. PROVIDE RELAYS IN PANEL AS REQUIRED.
- EXISTING LIGHTING CONTROL PANEL TO REMAIN. PROVIDE RELAYS IN PANEL AS REQUIRED.
- WALL PACK LIGHT FIXTURES INSTALLED AS PART OF THE BASE BIDDY PROJECT SHALL BE REMOVED OR RELOCATED.

GENERAL LIGHTING NOTES:

- REFER TO ARCHITECTURAL REFLECTED LIGHTING PLAN FOR EXACT FIXTURE LOCATIONS AND LIGHTING TYPES.
- ALL DIMMER/CONTROLS NIGHT LIGHTS SHALL BE CONNECTED TO UNWIRING CIRCUIT.
- REFER TO POWER PLAN FOR PANEL LOCATIONS.
- ELECTRICAL CONTRACTOR SHALL COORDINATE SWITCH LOCATION WITH DOOR SWINGS AND/OR EGRESS.
- ALL AREAS SHALL BE CONTROLLED WITH MANUAL ON/OFF SWITCHING AND BE LIMITED TO 10 AWG COPPER CONDUCTORS.
- ALL 120V FIXTURES MORE THAN 10' FROM FLOOR SHALL BE CONTROLLED WITH OCCUPANCY SENSORS.
- ALL EXTERIOR LIGHTS SHALL BE CONTROLLED AS NOTED ON DRAWINGS.
- ROOMS WITH ELECTRICAL PANELS SHALL NOT BE AUTOMATICALLY CONTROLLED.
- LIGHTS IN MECHANICAL ROOMS SHALL BE ADJUSTED AS REQUIRED TO AVOID CONTACT WITH UNIT WORK AND BEET LIGHT THE SPACE.
- ELECTRICAL CONTRACTOR SHALL BE RESPONSIBLE FOR ALL LOW VOLTAGE LIGHTING CONTROL CABLING ALTHOUGH NOT SPECIFICALLY SHOWN ON PLANS. LIGHTING CONTROL MANUFACTURER SHALL PROVIDE LAYOUT OF CABLING WITH THEIR SUBMITTALS.

LIGHTING CONTROL NOTES:

- PROVIDE COMPLETE LIGHTING CONTROL SYSTEM AS NOTED AND AS SHOWN ON DRAWINGS.
- ALL SENSORS SHALL BE LOCATED BY MANUFACTURER TO ACCOMPLISH EXACT REQUIREMENTS FOR SENSOR.
- ALL LIGHTING CONTROLS SHALL BE MANUAL ON/OFF EXCEPT FOR CORRIDORS AND EXTERIOR AT DOORWAYS.
- REMOVE AND INSTALL ALL LOW VOLTAGE LIGHTING CONTROL WIRING BETWEEN ROOM CONTROLLER SENSORS AND WALL SWITCHES WHERE DRAWING OR NOTES ARE REQUIRED. PROVIDE A COST CONTROL AS NEEDED TO EACH WIRE. DRAWING CABLES SHALL NOT BE REUSED. SAME CONDUIT AS POSSIBLE CONDUIT (TYP). REFER TO TYPICAL ROOM LIGHTING CONTROL WIRING DIAGRAM.
- SHOP DRAWINGS MUST BE SUBMITTED AND SHALL INCLUDE SENSOR LOCATIONS AND WIRING LAYOUTS. MANUFACTURER SHALL INCLUDE AT LEAST THREE (3) DIMENSIONS WITH CONNECTIONS. PREPARE ALL AFTER SHOP DRAWINGS ARE APPROVED AND BEFORE ANY WIRING BEGINS. STARTUP, AFTER WORK IS COMPLETE AND PRIOR TO FINAL INSPECTION. FINAL CHECK AFTER FINAL INSPECTIONS IS COMPLETED.
- MANUFACTURER SHALL PROVIDE WRITTEN REPORT AS TO FUNCTIONAL TESTING AFTER SYSTEM COMPLETE. REPORT MUST BE SIGNED BY THE TECHNICIAN AND MUST STATE THAT CONTROLS ARE TESTED, CALIBRATED, ADJUSTED, PROGRAMMED, AND IN PROPER WORKING CONDITION AS WELL AS DOCUMENTING THAT THE LIGHTING PERFORMS CORRECTLY TO MEET DESIGN DISPOSITION REPORT MUST ALSO INDICATE BY OWNER SIGNATURE THAT ALL CONTROLS HAVE BEEN COORDINATED WITH OWNER.
- PROVIDE WIRELESS CONFIGURATION TOOL FOR PROGRAMMING LIGHTING CONTROLS AS REQUIRED.

MECHANICAL EQUIPMENT NOTES:

- COORDINATE WITH MANUFACTURERS CUTSHEETS OR NAMEPLATE DATA AND ADJUST OVERCURRENT PROTECTION AS REQUIRED. PROVIDE REPORT FOR MANUFACTURERS RECOMMENDATIONS AND TO COMPLY WITH I.E.C. AND LOCAL CODES.
- ALL DISCONNECTS SHALL BE HEAVY DUTY TYPE.
- ALL FUSES SHALL BE USED PER NAMEPLATE DATA.
- PROVIDE FUSES DISCONNECT PER MECHANICAL EQUIPMENT NAMEPLATE OR MANUFACTURERS' REQUIREMENTS.
- MELTING DISCRETE MINIMUM SYSTEM MECHANICAL UNITS CAN BE ON THE SAME CIRCUIT. CONTRACTOR SHALL SUBMIT CIRCUIT BREAKER AND MECHANICAL EQUIPMENT FOLLOWING THE SPECIFICATIONS AND THE "N.C.C."
- MOUNT MANUAL MOTOR START SWITCH NEAR UNIT ABOVE ACCESSIBLE CABLING SPACE OR 48" A.F.T. TO TOP OF THE BOX AND LABEL AS REQUIRED.

LIGHTING CONTROL PANEL SCHEDULE						
RELAY	VOL.	CIRCUIT	DESCRIPTION	AUTOMATION	NOTES	
A1*	120	INV-1	CENTRAL STORAGE 145 - LIFE SAFETY	MANUAL ON/OFF, TIMED OFF	-	
A2*	120	INV-2	CENTRAL STORAGE 145 - LIFE SAFETY	MANUAL ON/OFF, TIMED OFF	-	
A3*	120	INV-3	CENTRAL STORAGE 145 - LIFE SAFETY	MANUAL ON/OFF, TIMED OFF	-	
A4	120	INV-4	CENTRAL STORAGE 145	MANUAL ON/OFF, TIMED OFF	-	
A5	120	INV-5	CENTRAL STORAGE 145	MANUAL ON/OFF, TIMED OFF	-	
A6	120	INV-6	CENTRAL STORAGE 145	MANUAL ON/OFF, TIMED OFF	-	
A7	120	INV-7	CENTRAL STORAGE 145	MANUAL ON/OFF, TIMED OFF	-	
A8	120	INV-8	CENTRAL STORAGE 145	MANUAL ON/OFF, TIMED OFF	-	
A9	120	INV-9	CENTRAL STORAGE 145	MANUAL ON/OFF, TIMED OFF	-	
A10	120	INV-10	CENTRAL STORAGE 145	MANUAL ON/OFF, TIMED OFF	-	
A11	120	INV-11	CENTRAL STORAGE 145	MANUAL ON/OFF, TIMED OFF	-	
A12	120	INV-12	CENTRAL STORAGE 145	MANUAL ON/OFF, TIMED OFF	-	
A13	120	INV-13	TWO BAY BAY 131 & CENTRAL STORAGE 145	MANUAL ON/OFF, TIMED OFF	-	
A14	120	INV-14	TWO BAY BAY 132 & CENTRAL STORAGE 132	MANUAL ON/OFF, TIMED OFF	-	
A15	120	INV-15	TWO BAY BAY 133 & CENTRAL STORAGE 145	MANUAL ON/OFF, TIMED OFF	-	
A16	120	INV-16	BUILDING EXTERIOR	TIMED ON/OFF	1	
A17*	120	INV-17	BUILDING EXTERIOR - LIFE SAFETY	TIMED ON/OFF	1	
A18	120	INV-18	BUILDING EXTERIOR	TIMED ON/OFF	1	
A19*	120	INV-19	BUILDING EXTERIOR - LIFE SAFETY	TIMED ON/OFF	1	
A20*	120	INV-20	DSP STORAGE D101 - LIFE SAFETY	MANUAL ON/OFF, TIMED OFF	-	
A21	120	LE-1	DSP STORAGE D101 - LIFE SAFETY	MANUAL ON/OFF, TIMED OFF	-	
A22	120	LE-2	DSP STORAGE D101 - LIFE SAFETY	MANUAL ON/OFF, TIMED OFF	-	
A23	120	LE-3	BUILDING EXTERIOR	TIMED ON/OFF	1	

LIGHTING CONTROL SCHEME SCHEDULE					
MARK	ROOM	RELAYS	ROOM CONTROLLER OR RELAY	LABEL - ENGRAVING	AUTOMATION
A	DSP STORAGE (E101)	1	RELAYS A20, A21, A22	ALL ON	ON
		2	RELAYS A23	ALL OFF	OFF

DSP STORAGE - MECHANICAL EQUIPMENT SCHEDULE											
EQUIPMENT MARK	EQUIPMENT LOCATION	VOLTAGE (PHASE)	HP	SW	AMPS	SIZE (POL)	SEMA	SWITCH TYPE	PANEL	CIRCUIT #	FEEDER SIZE
Q1A-2	DSP STORAGE	115V/2PH	1/2	7.5	35A/1P	1	NON-FUSIBLE	1	LE 17	3172.8	1/2" X 3/4" - 3/16"
Q1A-3	DSP STORAGE	115V/2PH	1/2	7.5	35A/1P	1	NON-FUSIBLE	1	LE 8	3172.8	1/2" X 3/4" - 3/16"
Q1A-4	DSP STORAGE	115V/2PH	1/2	7.5	35A/1P	1	NON-FUSIBLE	1	LE 10	3172.8	1/2" X 3/4" - 3/16"
Q1A-5	DSP STORAGE	208V/3PH	7	17.4	35A/3P	1	NON-FUSIBLE	1	LE 32.39.4	3172.8	1/2" X 3/4" - 3/16"
VEP-4	DSP STORAGE	208V/3PH	1 1/2	7.5	35A/3P	1	NON-FUSIBLE	1	LE 32.34.34	3172.8	1/2" X 3/4" - 3/16"
VEP-5	DSP STORAGE	208V/3PH	1 1/2	7.5	35A/3P	1	NON-FUSIBLE	1	LE 32.34.34	3172.8	1/2" X 3/4" - 3/16"
VEP-6	DSP STORAGE	208V/3PH	1 1/2	7.5	35A/3P	1	NON-FUSIBLE	1	LE 25.97.27	3172.8	1/2" X 3/4" - 3/16"
VEP-6	DSP STORAGE	208V/3PH	1 1/2	7.5	35A/3P	1	NON-FUSIBLE	1	LE 31.53.35	3172.8	1/2" X 3/4" - 3/16"

NOTE:
THE CONTRACTOR SHALL PROVIDE A QUALIFIED FIRE PROTECTION ENGINEER (QFPE) AS DEFINED BY UIC 346001 TO THE OWNER FOR THE PROJECT. THE QFPE SHALL WORK FOR THE CONTRACTOR AND BE RESPONSIBLE FOR PRODUCING, REVIEWING, AND STAMPING ALL SHOP DRAWINGS AND MATERIAL SUBMITTALS FOR THE FIRE ALARM AND SYSTEMS. THE QFPE SHALL PROVIDE INSPECTIONS DURING CONSTRUCTION TO ENSURE SYSTEMS COMPLIANCE. PRIOR TO FINAL INSPECTION, THE QFPE SHALL FURNISH A PRE-INSPECTION AND PROVIDE A REPORT FOR A REVIEW. THE QFPE SHALL ALSO BE INVOLVED IN THE FINAL INSPECTION WITH THE GOVERNMENT AND THE QFPE SHALL VERIFY THE INSTALLATION OF THE FIRE ALARM AND SYSTEMS AND VERIFY BY REFERENCE TO THE GOVERNMENT AND THAT THE SYSTEMS HAVE BEEN CONSTRUCTED AND OPERATE AS INTENDED TO COMPLY WITH UIC 346001 AND UIC 4242-01.

SS&L
ARCHITECTURAL ENGINEERS
1000 SOUTH STATE STREET, SUITE 100, TAMPA, FL 33604
TEL: 813.247.1100 FAX: 813.247.1101

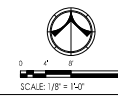
NO.	DATE	DESCRIPTION	BY	CHKD.
1	ADD #1	1.10.25		
2	REV#1	2.2.26		

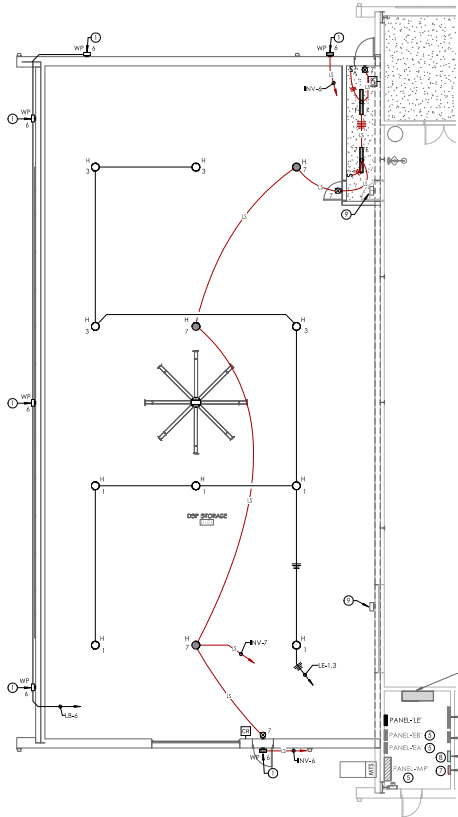
Job Number: 19004
Date: 05/20/21
Drawn By: SINGOR21
Checked By: JM
Project Title: DSP STORAGE ELECTRICAL PLANS

DEPLOYABLE PARTS STORAGE FACILITY
DANNIELY FIELD
MONTGOMERY, AL

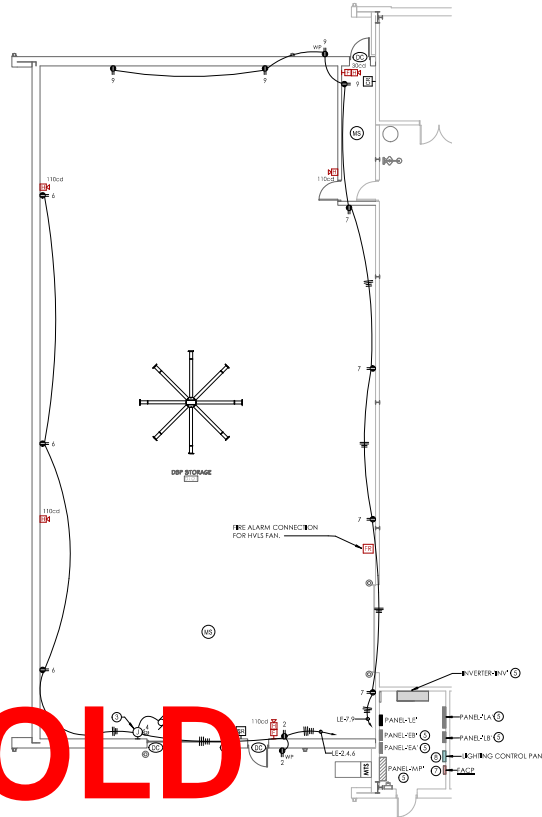
Sheet Title: DSP STORAGE ELECTRICAL PLANS
Sheet Number: E1.1B

GARNER
ASSOCIATES ENGINEERING
901 South Perry Street, Montgomery, AL 36104
404.247.1100 | 404.247.1101

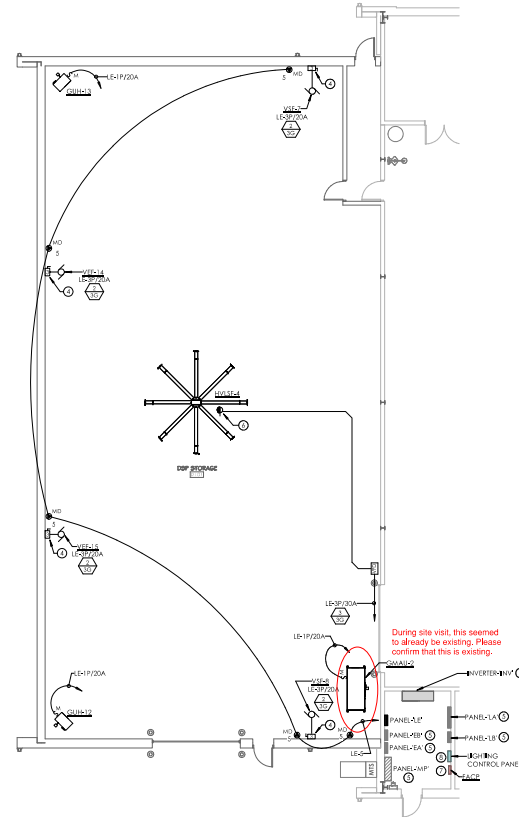




1 LIGHTING PLAN - DSP STORAGE
 1/8" = 1'-0"



2 POWER & AUXILIARY PLAN - DSP STORAGE
 1/8" = 1'-0"



3 MECHANICAL POWER PLAN - DSP STORAGE
 1/8" = 1'-0"

**OLD
 DRAWING
 DO NOT
 USE**

DSP STORAGE - MECHANICAL EQUIPMENT SCHEDULE											
EQUIPMENT MARK	EQUIPMENT LOCATION	ELECTRICAL CHARACTERISTICS			DISCONNECT CHARACTERISTICS			NOMENCLATURE CHARACTERISTICS			
		VOLTAGE/PHASE	HP	KW	AMPS	SIZE/POLE	NEMA	SWITCH TYPE	PANEL	CIRCUIT #	FEEDER #
GR002	DSP STORAGE	115V/1PH	1/2	0.8	3.6	30A/1P	1	MOTOR SWCH	LE 12	3410 & 11P10G3-341C	
GR003	DSP STORAGE	115V/1PH	1/2	1.2	5.4	30A/1P	1	MOTOR SWCH	LE 8	3410 & 11P10G3-341C	
GR004	DSP STORAGE	115V/1PH	1/2	1.2	5.4	30A/1P	1	MOTOR SWCH	LE 10	3410 & 11P10G3-341C	
VR004	DSP STORAGE	208V/3PH	2	3.0	13.6	30A/3P	1	NON-CIRCULAR	LE 37-39-41	3412 & 11P12G3-341C	
VR005	DSP STORAGE	208V/3PH	1 1/2	1.8	8.1	30A/3P	1	NON-CIRCULAR	LE 38-40-42	3412 & 11P12G3-341C	
VR007	DSP STORAGE	208V/3PH	1 1/2	1.8	8.1	30A/3P	1	NON-CIRCULAR	LE 25-27-29	3412 & 11P12G3-341C	
VR008	DSP STORAGE	208V/3PH	1 1/2	1.8	8.1	30A/3P	1	NON-CIRCULAR	LE 31-33-35	3412 & 11P12G3-341C	

- KEYED NOTES:**
- MOUNT WALL PACK AT APPROXIMATELY 12'-0" ABOVE FINISHED GRADE.
 - POWER CONNECTION FOR ROLLUP DOOR VENT, VENT DOOR AND MOTOR SHALL REMAIN WITH ARCHITECT AND OWNER.
 - ANGLE GANG JUNCTION BOX FRESH MOUNTED AT 48" ± F.F. TO TOP OF BOX FOR DOOR CONTROLS. ROUTE 3/4" CONDUIT TO DOORS MOTOR AS REQUIRED.
 - DISCONNECT FOR FAN, MOUNT DISCONNECT ADJACENT TO FAN MOTOR STARTER. VERIFY EXACT LOCATION OF MOTOR STARTER WITH MECHANICAL. PROVIDE BREAKER PANELS AS REQUIRED.
 - EXISTING ELECTRICAL PANELS TO REMAIN. PROVIDE BREAKER PANELS AS REQUIRED.
 - RECEPTACLE FOR HVCS FAN, MOUNT RECEPTACLE TO STRUCTURE ADJACENT TO FAN.
 - EXISTING FIRE ALARM PANEL TO REMAIN. PROVIDE RELAYS IN PANEL AS REQUIRED.
 - EXISTING LIGHTING CONTROL PANEL TO REMAIN. PROVIDE RELAYS IN PANEL AS REQUIRED.
 - WALL PACK LIGHT FIXTURES INSTALLED AS PART OF THE BASE SUPPLY PROJECT SHALL BE REMOVED OR RELOCATED.
- GENERAL LIGHTING NOTES:**
- REFER TO ARCHITECTURAL REFLECTED LIGHTING PLAN FOR EXACT FIXTURE LOCATIONS AND FIXTURE TYPES.
 - ALL DIMENSIONS BETWEEN LIGHT FIXTURES SHALL BE CONNECTED TO UNDIMMED CIRCUIT.
 - REFER TO POWER PLAN FOR PANEL LOCATIONS.
 - ELECTRICAL CONTRACTOR SHALL COORDINATE SWITCH LOCATION WITH DOOR SWINGS BEFORE ROUGH-IN.
 - ALL AREAS SHALL BE CONTROLLED WITH MANUAL ON/OFF SWITCHING AND BE UNDER CONTROL OF OCCUPANCY SENSORS.
 - ALL 120 VOLT CIRCUITS MORE THAN 20' LONG FROM PANEL TO FIXTURE SHALL BE MINIMUM OF 10 AWG COPPER CONDUCTORS.
 - ALL EXTERIOR LIGHTS SHALL BE CONTROLLED AS NOTED ON DRAWINGS.
 - ROOMS WITH MECHANICAL ROOMS SHALL BE ADJUSTED AS REQUIRED TO AVOID CONFLICT WITH EXISTING WORK AND BEET LIGHT THE SPACE.
 - ELECTRICAL CONTRACTOR SHALL BE RESPONSIBLE FOR ALL LOW VOLTAGE LIGHTING CONTROL CABLING. ALTHOUGH NOT SPECIFICALLY SHOWN ON PLANS, LIGHTING CONTROL MANUFACTURERS SHALL PROVIDE LAYOUT OF CABLING WITH THEIR SUBMITTALS.
- LIGHTING CONTROL NOTES:**
- PROVIDE COMPLETE LIGHTING CONTROL SYSTEM AS NOTED AND AS SHOWN ON DRAWINGS.
 - ALL SENSORS SHALL BE LOCATED BY MANUFACTURER TO ACCOMMODATE EXACT REQUIREMENTS FOR SENSOR.
 - ALL LIGHTING CONTROLS SHALL BE MANUAL ON/OFF EXCEPT FOR CORRIDORS AND EXTERIOR AT DOORWAYS.
 - FUNCTION AND INSTALL ALL LOW VOLTAGE LIGHTING CONTROLS BETWEEN ROOM CONTROLLER ENDPOINTS AND WALL SWITCHES WHERE DRAWING OF FIXTURES IS REQUIRED. PROGRAMS TO BE CABLED AS NEEDED TO EACH FIXTURE. CABLED CABLES SHALL NOT BE ROUTED IN SAME CONDUIT AS POWER CONDUIT (120V). REFER TO TYPICAL ROOM LIGHTING CONTROL WIRING DIAGRAM.
 - SHOP DRAWINGS MUST BE SUBMITTED AND SHALL INCLUDE SENSOR LOCATION AND WIRING LAYOUT. MANUFACTURER SHALL INCLUDE AT LEAST THREE (3) CONFLICT CHECKS WITH CONTRACTOR TO PRE-INSTALL - AFTER SHOP DRAWINGS ARE APPROVED AND BEFORE ANY WORK BEGINS TO STARTUP - AFTER WORK IS COMPLETE AND BEFORE FINAL CHECKOUT. FINAL CHECKOUT AFTER ALL INSPECTIONS COMPLETED. OWNER TO SIGN OFF ON SHOP DRAWINGS.
 - MANUFACTURER SHALL PROVIDE WRITTEN REPORT AT TO FUNCTIONAL TESTING AFTER SYSTEM IS COMPLETE. REPORT MUST BE SUBMITTED TO ARCHITECT AND MUST STATE THAT CONTROLS ARE INSTALLED, CALIBRATED, ADJUSTED, PROGRAMMED, AND PROPER WIRING CONTROL AS WELL AS DOCUMENTING THAT THE LIGHTING PERFORMS CORRECTLY TO THE INTENDED OPERATION. REPORT MUST ALSO STATE BY OWNER'S SIGNATURE THAT ALL CONTROLS HAVE BEEN COORDINATED WITH OWNER.
 - PROVIDE WIRELESS CONFIGURATION TOOL FOR PROGRAMMING LIGHTING CONTROLS AS REQUIRED.
- MECHANICAL EQUIPMENT NOTES:**
- COORDINATE WITH MANUFACTURER'S CUTSHEETS OR NAMEPLATE DATA AND ADJUST OVERCURRENT PROTECTION AS NEEDED TO PROTECT EQUIPMENT PER MANUFACTURER'S RECOMMENDATIONS AND TO COMPLY WITH I.E.C. AND LOCAL CODES.
 - ALL DISCONNECTS SHALL BE HEAVY DUTY TYPE.
 - ALL FUSES SHALL BE HEAVY DUTY TYPE.
 - PROVIDE FUSES TO DISCONNECT PER MECHANICAL EQUIPMENT NAMEPLATE OR MANUFACTURER'S RECOMMENDATIONS.
 - MULTIPLE DUCTLESS VENT SYSTEM MECHANICAL UNITS CAN BE ON THE SAME CIRCUIT. CONTRACTOR SHALL ROUTE CABLES TO UNIT IN MOST ECONOMICAL ORDER FOLLOWING THE SPECIFICATIONS AND THE I.E.C.
 - MOUNT MANUAL MOTOR START SWITCH NEAR UNIT ABOVE ACCESSIBLE CABLING SPACE OR 48" ± F.F. TO THE TOP OF THE BOX AND LABEL AS REQUIRED.

SS&L
 ARCHITECTURE ENGINEERING & CONSTRUCTION
 1001 SOUTH BRIDGE STREET, SUITE 1000
 MONTGOMERY, AL 36102 | P: 334.647.1599 | F: 334.647.1598

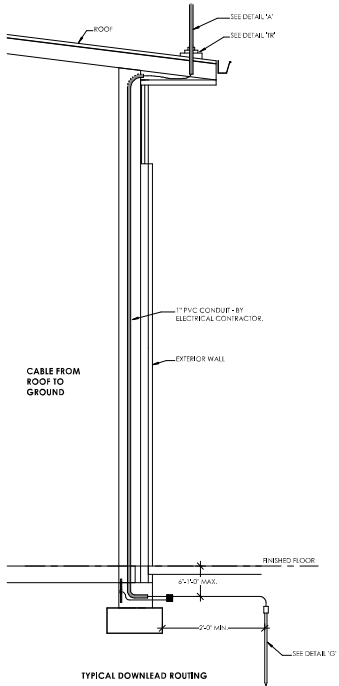
Job Number: 19024
 Date: 10 April 2025
 Drawn By: JM
 Checked By: DMG
 Project Title: DEPLOYABLE PARTS STORAGE FACILITY

DEPLOYABLE PARTS STORAGE FACILITY
 DANNELLY FIELD
 MONTGOMERY, AL

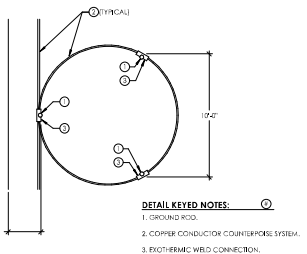
Sheet Title: DSP STORAGE ELECTRICAL PLANS
 Sheet Number: E1.1B

GARNER
 ASSOCIATES ENGINEERING
 805 South Central Expressway, Montgomery, AL 36104
 P: 334.647.1599 | F: 334.647.1598 | gae@garnereng.com
 PROJECT NO: 19024

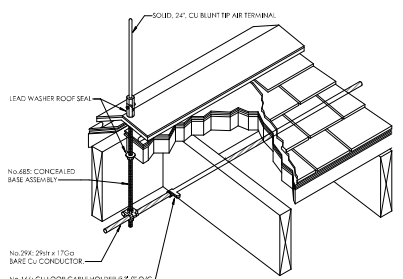
SCALE: 1/8" = 1'-0"



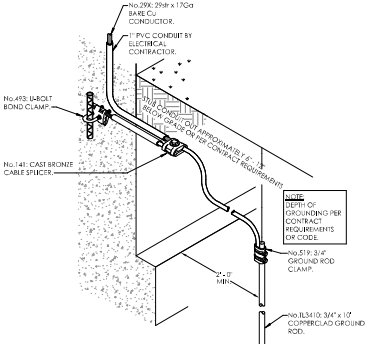
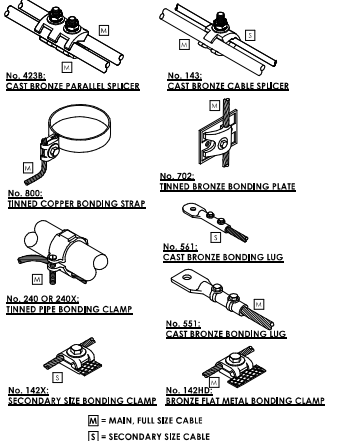
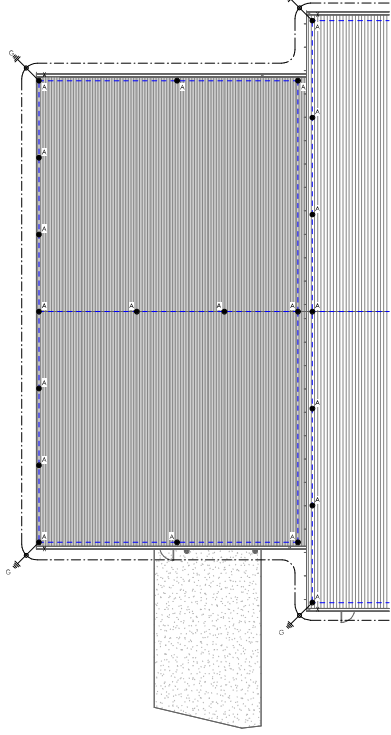
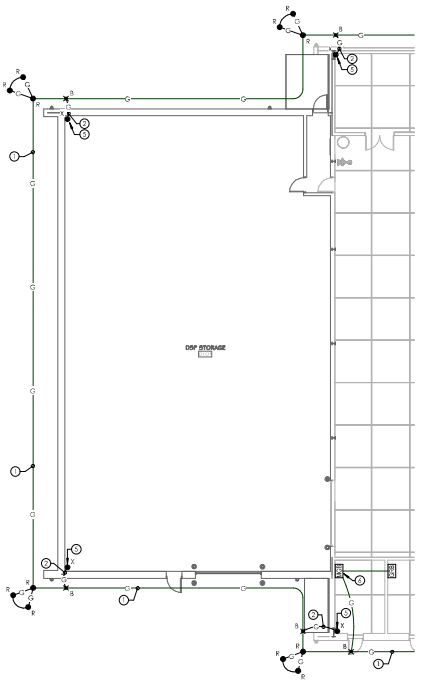
3 **DETAIL "X"**
NOT TO SCALE



4 **THREE ROD CLUSTER - CONNECTION TO COUNTERPOISE**
NOT TO SCALE



5 **DETAIL "A"**
NOT TO SCALE



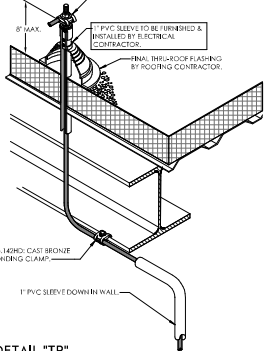
7 **DETAIL "G"**
NOT TO SCALE

GROUNDING COUNTERPOISE & LIGHTNING PROTECTION SYMBOL LEGEND

- ▲ LIGHTNING PROTECTION SYSTEM - AIR TERMINAL - LETTER DENOTES DETAIL TYPE.
- LIGHTNING PROTECTION SYSTEM - MAIN CONDUCTOR.
- LIGHTNING PROTECTION SYSTEM - COUNTERPOISE/GROUND CABLE.
- LIGHTNING PROTECTION SYSTEM - THRU ROOF PENETRATION - LETTER DENOTES DETAIL TYPE.
- ⊗ LIGHTNING PROTECTION SYSTEM - THRU ROOF PENETRATION TO STEEL STRUCTURE - LETTER DENOTES DETAIL TYPE.
- ⊗ LIGHTNING PROTECTION SYSTEM - BONDING LOCATION.
- ⊗ LIGHTNING PROTECTION SYSTEM - FULL DOWNLEAD TO GROUND.
- ⊗ LIGHTNING PROTECTION SYSTEM - STEEL COLUMN BONDING TO GROUND.
- ⊗ LIGHTNING PROTECTION SYSTEM - CONDUIT/PIPEWORK DOWNLEAD TO GROUND.
- GROUNDING COUNTERPOISE SYSTEM - GRAVEL GROUND ROD.
- GROUNDING COUNTERPOISE SYSTEM - GROUNDING CONDUCTOR BELOW GRADE.
- ⊗ GROUNDING COUNTERPOISE SYSTEM - BONDING CONNECTION TO GROUNDING COUNTERPOISE.

LIGHTNING PROTECTION SYSTEM GENERAL AND INSTALLATION NOTES:

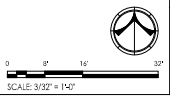
- LOCATE AIR TERMINALS AS SHOWN. TAKE CARE TO INSURE THAT ALL POINTS ARE WITHIN 20' OF CORNER BUILDING EDGE, CORNER CORNER, AND ROOF EDGES, AND THAT MAXIMUM SPACING DOES NOT EXCEED 50', AND THAT MINIMUM PROJECTION ABOVE OBJECT PROTECTED IS 10'. (POINTS PROTECTING UP TO MAX SPACING IS 35' MAX.)
- MAINTAIN HORIZONTAL OR DOWNWARD COURSE OF MAIN CONDUCTOR AND INSURE THAT ALL BENDS HAVE AT LEAST AN 8" RADIUS AND DO NOT EXCEED 90°.
- ATTACH ALL EXPOSED ROOF, DOWN LEAD AND BONDING CABLES AT 30" ON CENTER MAXIMUM. VERIFY COVARIABLE OF ADHESIVE ON AIRFRAME ROOF APPLICATIONS PRIOR TO INSTALLATION.
- GROUND ELECTRODES SHALL BE INSTALLED AS SHOWN BUT IN NO INSTANCE SHALL THEY BE LESS THAN 10' BELOW GRADE AND 20' FROM FOUNDATION WALL. DOWN RODS SHALL PENETRATE EARTH AT LEAST 10".
- BOND TO WATER SERVICE AND OTHER PIPING SYSTEMS AS SHOWN AND AS REQUIRED BY CODES.
- INTERCONNECT LIGHTNING PROTECTION GROUND TO ELECTRIC, TELEPHONE, AND OTHER BUILDING GROUND SYSTEMS AS SHOWN OR AS REQUIRED BY CODE.
- SYSTEM SHALL BE INSTALLED AS SHOWN TO INSURE PROPER CODE COMPLIANCE AND SYSTEM CERTIFICATION. ANY MAJOR VARIANCE SHALL BE IN WRITING AND APPROVED.
- "AS-BUILT" DRAWINGS SHALL BE SUBMITTED IN ACCORDANCE WITH CERTIFICATION PROCEDURES.
- ALL MATERIALS ARE UNDERWRITERS LABORATORIES APPROVED WITH LABELS ON CONDUCTORS @ 10' INTERVALS AND LABELS ON ALL AIR TERMINALS.
- ALL MATERIALS SHOWN AND INTENDED FOR USE ARE TO BE MANUFACTURED BY TOMPSON LIGHTNING PROTECTION INC., 105 BIBLE WAY, ST. PAUL, MN 55118. PHONE: 650-774-2330 FAX: 651-459-2415.
- SUBMITTALS SHALL BE STAMPED BY AN ILLUMINATED MASTER INSTALLER DESIGNER. FIELD INSTALLERS TO BE ILLUMINATED.
- FIELD SYSTEM INSTALLER TO BEAR ILLUMINATED SYSTEM CERTIFICATION.
- LIGHTNING PROTECTION SYSTEM (LPS) IS TO BE INSTALLED PER NFPA 780-2013, NFPA 780-2011 AND NFPA 780-2010 LATEST EDITION. ALSO THE NEW MONTGOMERY INSPECTION AND ASSEMBLY FACILITY TO BE TESTED, CERTIFIED AND ACCEPTED BY THE 3RD PARTY REQUIREMENTS OF IFC SECTION 911 AND IFC 911-2.4.14.1 SECTION 4.1. ADDITIONAL RESPONSIBILITY OF 3RD PARTY TESTING WILL BE TO TEST ALL AIR TERMINALS AND ROOF MOUNTED BY BONDS ELECTRICAL, MECHANICAL AND ROOFING CONTRACTORS. THIS TESTING WILL BE COMPLETED ON THE ENTIRE FACILITY FOR NEW OR ALTERED LPS. TO INCLUDE EXISTING LPS FOR ADDON OR ALTERED LPS.



8 **DETAIL "TR"**
NOT TO SCALE

KEYED NOTES:

- INSTALL A CONTINUOUS GROUND CONDUCTOR THE PERIMETER OF THE BUILDING. PLUS BARE CU 30' BELOW GRADE (30" FROM BUILDING). INSTALL GROUND RODS AS NOTED. INTERCONNECT WITH FAC CU.
- INSTALL A BONDING CONNECTION FROM THE METAL STEEL FRAMING SYSTEM TO EACH GROUND. USE #485 CU GROUND WELD TO METAL FRAME 10" AFF. WELD TO COUNTERPOISE BELOW GRADE. RUN #48 CU CONDUCTORS TO GROUND.
- BOND CWP TO COUNTERPOISE - #48 CU GROUND.
- BOND SPINNER REFER TO COUNTERPOISE - #10 CU GROUND.
- TYPICAL AT ALL POINTS. RUN LIGHTNING GROUNDING CONDUCTORS UP TO ROOF AND MAKE CONNECTION TO LIGHTNING PROTECTION SYSTEM.
- PROVIDE 10' GROUND CONNECTION TO COUNTERPOISE FROM MAIN BUS BAR.



GARNER ASSOCIATES ENGINEERING

305 South Perry Street, Montgomery, AL 36104
404.247.2100 • www.garnersa.com

SS&L

ARCHITECTURAL & ENGINEERING
1001 N. W. 10th St., Ft. Lauderdale, FL 33304
PH: 754.363.1212 | FAX: 754.363.1213

No.	Description	Date
1	PREP	2.2.20

Job Number: 19004
Date: 05/02/21
Drawn By: JMG/DCJ
Checked By: JM
Project Title: DSP STORAGE ELECTRICAL PLANS

Sheet Number: E1.2B

DEPLOYABLE PARTS STORAGE FACILITY
DANNELLY FIELD
MONTGOMERY, AL

DSP STORAGE ELECTRICAL PLANS

Scale: 3/32" = 1'-0"

