

DATE OF SURVEY: NOVEMBER 2023

SURVEY MADE BY: ENVIRONMENTAL AND GEOTECHNICAL
SPECIALISTS, INC.

SUBMITTED BY: KEVIN T. SWEENEY, P.E.

REPORT OF TESTS
ESCAMBIA-SANTA ROSA RTMC
AND ECRC OFFICE FACILITY

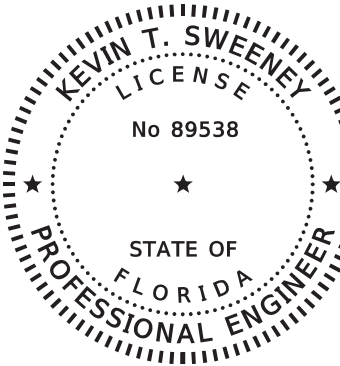
LOCATION: PENSACOLA

COUNTY: ESCAMBIA

ORGANIC CONTENT				SIEVE ANALYSIS RESULTS PERCENT PASS (%)						ATTERBERG LIMITS (%)				CORROSION TEST RESULTS					
STRATUM NO.	NO. OF TESTS	% ORGANIC	MOISTURE CONTENT	NO. OF TESTS	10 MESH	40 MESH	60 MESH	100 MESH	200 MESH	NO. OF TESTS	LIQUID LIMIT	PLASTIC INDEX	AASHTO GROUP	DESCRIPTION	NO. OF TESTS	RESISTIVITY ohm-cm	CHLORIDES ppm	SULFATES ppm	pH
1	--	--	--	25	98-100	51-92	19-67	11-37	6-18	--	--	--	A-1-b, A-3, A-2-4	ORANGE, GRAY, BROWN MEDIUM TO SILTY FINE SAND (<20% PASSING -200 SIEVE)	--	--	--	--	--
2	2	2.0-2.8	11	33	97-100	60-99	44-90	29-57	20-34	1	21	8	A-2-4	BROWN, ORANGE, GRAY SILTY FINE SAND (≥20% PASSING -200 SIEVE)	1	59,000	5	<1	5.3
3	1	1.9	13	24	98-100	84-92	59-76	39-53	25-45	18	19-42	11-28	A-2-6, A-2-7, A-6	ORANGE AND GRAY, BROWN CLAYEY FINE SAND TO PLASTIC CLAYEY FINE SAND	1	110,000	15	18	5.1
4	1	14.2	31	--	--	--	--	--	--	--	--	--	A-2-4	DARK GRAY ORGANIC SILTY FINE SAND	--	--	--	--	--

STRATA NOTES

1. STRATA BOUNDARIES ARE APPROXIMATE AND REPRESENT SOIL STRATA AT EACH BORING ONLY. ANY SUBSOIL CONNECTING LINES SHOWN ARE FOR ESTIMATING ONLY AND DO NOT INDICATE ACTUAL STRATUM LIMITS. SUBSURFACE VARIATIONS BETWEEN BORINGS SHOULD BE ANTICIPATED.
2. STRATA DESCRIPTIONS ARE BASED ON FDOT STANDARD PLANS INDEX 120-001.
3. REMOVAL OF MATERIAL ENCOUNTERED SHOULD BE ACCOMPLISHED IN ACCORDANCE WITH STANDARD PLAN 120-002, UNLESS OTHERWISE SHOWN ON THE PLANS.
4. STRATA 1 AND 2 REPRESENT "SELECT" MATERIALS. DUE TO THE FINES CONTENT, STRATUM 2 WILL RETAIN MOISTURE AND MAY BE DIFFICULT TO COMPACT WHEN WET.
5. STRATUM 3 REPRESENTS A "PLASTIC" MATERIAL.
6. STRATUM 4 REPRESENTS AN "ORGANIC" MATERIAL WITH AN AVERAGE ORGANIC CONTENT BETWEEN 5% AND 20%.



THIS ITEM HAS BEEN DIGITALLY
SIGNED AND SEALED BY:

ON THE DATE ADJACENT TO THE SEAL.

PRINTED COPIES OF THIS DOCUMENT ARE NOT
CONSIDERED SIGNED AND SEALED. THE SIGNATURE
MUST BE VERIFIED ON ANY ELECTRONIC COPIES.

KEVIN T. SWEENEY, P.E.
P.E. LICENSE NUMBER 89538
ENVIRONMENTAL & GEOTECHNICAL SPECIALISTS, INC.
3676 HARTSFIELD ROAD
TALLAHASSEE, FLORIDA 32303

No.	Date	Issue / Revision	<div>Environmental & Geotechnical Specialists, Inc.</div> <div>EGS</div> <div>3676 HARTSFIELD ROAD TALLAHASSEE, FLORIDA 32303 OFFICE (850) 386-1253</div>	<div>KEVIN T. SWEENEY, P.E. FL P.E. NO.: 89538</div> <div>ENVIRONMENTAL & GEOTECHNICAL SPECIALISTS, INC. 3676 HARTSFIELD ROAD TALLAHASSEE, FL 32303 CERTIFICATE OF AUTHORIZATION: 6222</div>	FLORIDA-ALABAMA TPO			REPORT OF TESTS	DWG NO.		
									AB-000		
									SHEET NO.		
					ROAD NO.	COUNTY	FINANCIAL PROJECT ID				
					NORTH W STREET	ESCAMBIA	451524-1-38-01				

THE OFFICIAL RECORD OF THIS SHEET IS THE ELECTRONIC FILE DIGITALLY SIGNED AND SEALED UNDER RULE 61G15-23.004, F.A.C.
GENERAL DISCLAIMER: TO THE BEST OF THE ARCHITECT'S OR ENGINEER'S KNOWLEDGE, THE PLANS AND SPECIFICATIONS COMPLY WITH THE APPLICABLE MINIMUM BUILDING CODES AND THE
APPLICABLE FIRE SAFETY STANDARD AS DETERMINED BY THE LOCAL AUTHORITY IN ACCORDANCE WITH FBC 110.8.4.4 AND CHAPTER 63, FLORIDA STATUTES.

NOTES

1. NUMBERS LEFT OF BORING INDICATE STANDARD PENETRATION TEST (SPT) N-VALUES FOR 12 INCH PENETRATION (UNLESS OTHERWISE NOTED).
2. N-VALUES DENOTED WITH AN ASTERISK (*) WERE DERIVED FROM STATIC HAND CONE PENTROMETER TESTS.
3. NUMBERS IN CENTER OF BORING INDICATE STRATUM NUMBER. SEE REPORT OF TESTS SHEET FOR STRATA PROPERTIES.
4. GNA INDICATES "GROUNDWATER NOT APPARENT" DUE TO THE INTRODUCTION OF DRILLING FLUID INTO THE BOREHOLE.
5. MEASURED GROUNDWATER LEVEL SHOWN IS THE WATER LEVEL ENCOUNTERED DURING THE SUBSURFACE INVESTIGATION. GROUNDWATER LEVEL FLUCTUATIONS SHOULD BE ANTICIPATED.
6. ELEVATIONS NOT AVAILABLE AT TIME OF SUBMITTAL.
7. SOIL DESCRIPTIONS, TEST DATA, AND STANDARD PENETRATION VALUES SHOWN ARE FOR THE SOIL BORING ONLY AND MAY NOT APPLY TO ANY OTHER LOCATIONS EXCEPT AT THE LOCATIONS OF THE SOIL BORING. EXTRAPOLATION OF THE SOIL DATA TO OTHER LOCATIONS IS THE SOLE RESPONSIBILITY OF THE PERSON PERFORMING THE EXTRAPOLATION.

LEGEND

LABORATORY TESTING RESULTS

ESTIMATED "NORMAL" SEASONAL HIGH GROUNDWATER

GROUNDWATER NOT ENCOUNTERED

GROUNDWATER NOT APPARENT (NOTE 3)

N-VALUE EQUIVALENT (NOTE 2)

WATER CONTENT (%)

-200 SIEVE


LIQUID LIMIT

PLASTICITY INDEX

ORGANIC CONTENT

UNIFIED/AASHTO SOIL CLASSIFICATION

GROUP SYMBOLS



▽

GNE

GNA

*N

Wc=

-200=

LL=

PI=

OC%=

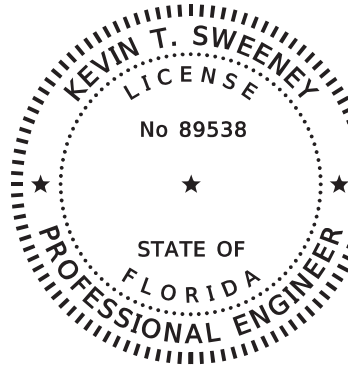
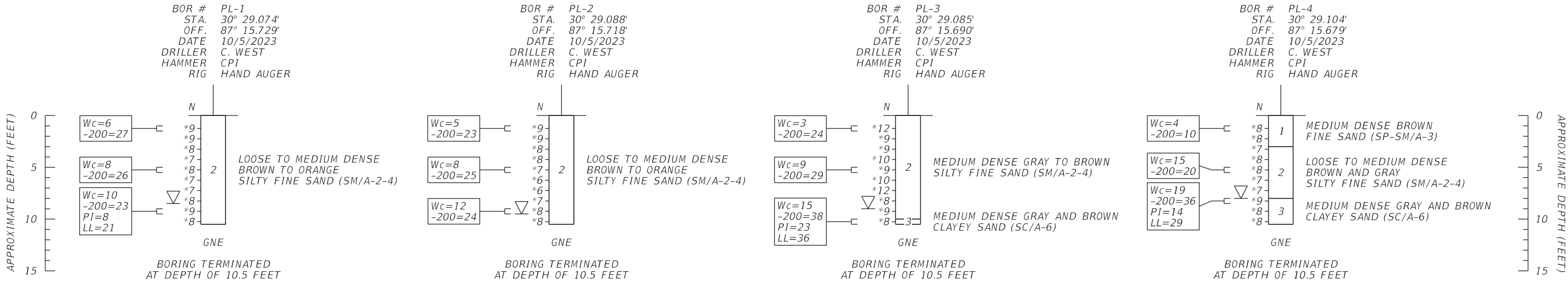
(SM/A-2-4)

ENVIRONMENTAL CLASSIFICATION

EXTREMELY AGGRESSIVE FOR STEEL (SOIL - pH 5.1)

MODERATELY AGGRESSIVE FOR CONCRETE

PARKING LOT



THIS ITEM HAS BEEN DIGITALLY SIGNED AND SEALED BY:

ON THE DATE ADJACENT TO THE SEAL.

PRINTED COPIES OF THIS DOCUMENT ARE NOT CONSIDERED SIGNED AND SEALED. THE SIGNATURE MUST BE VERIFIED ON ANY ELECTRONIC COPIES.

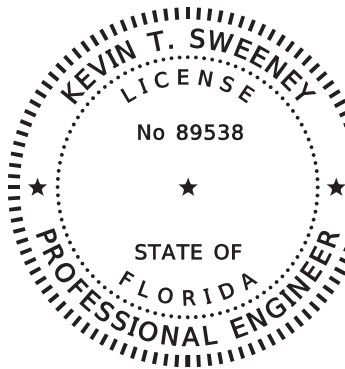
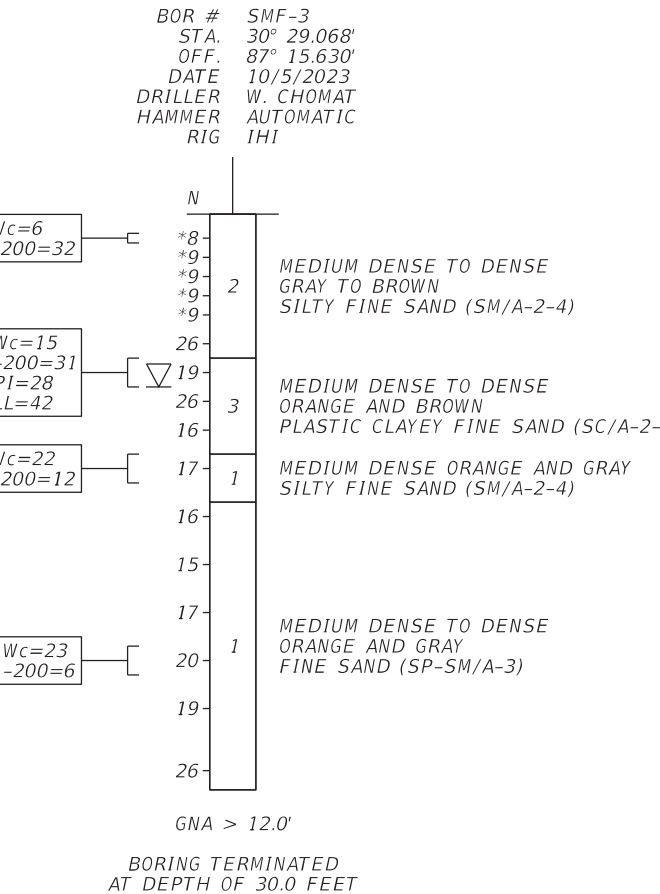
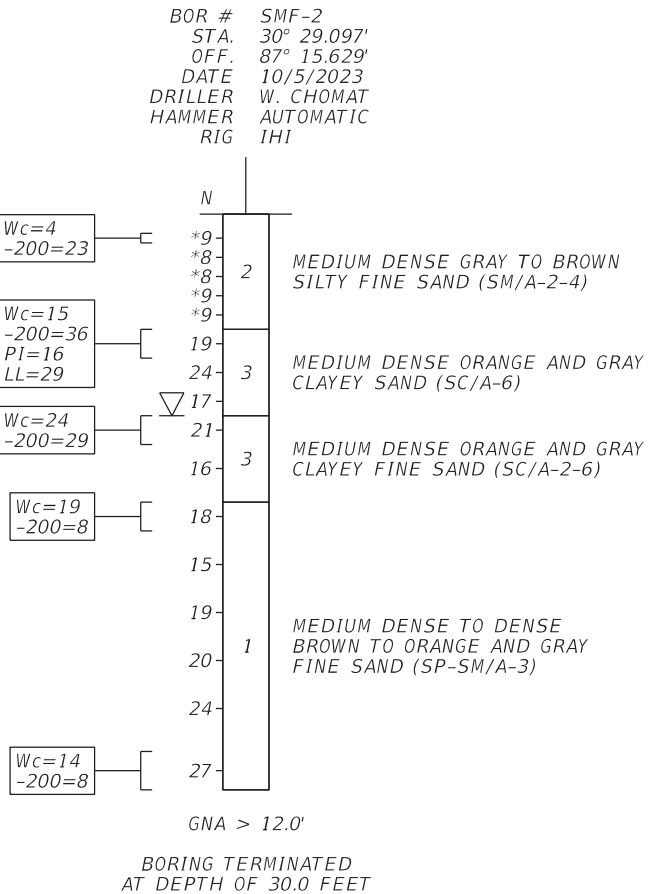
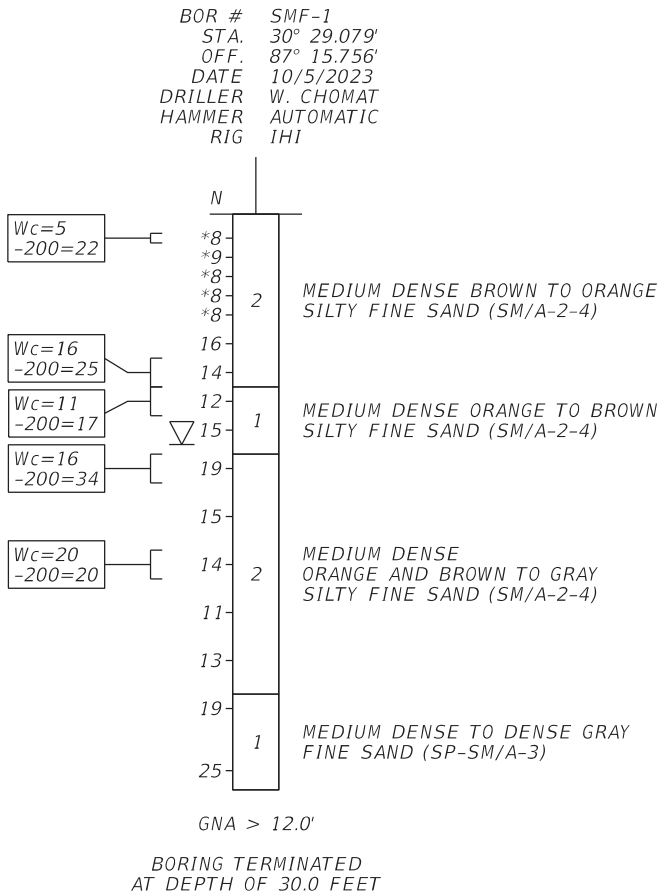
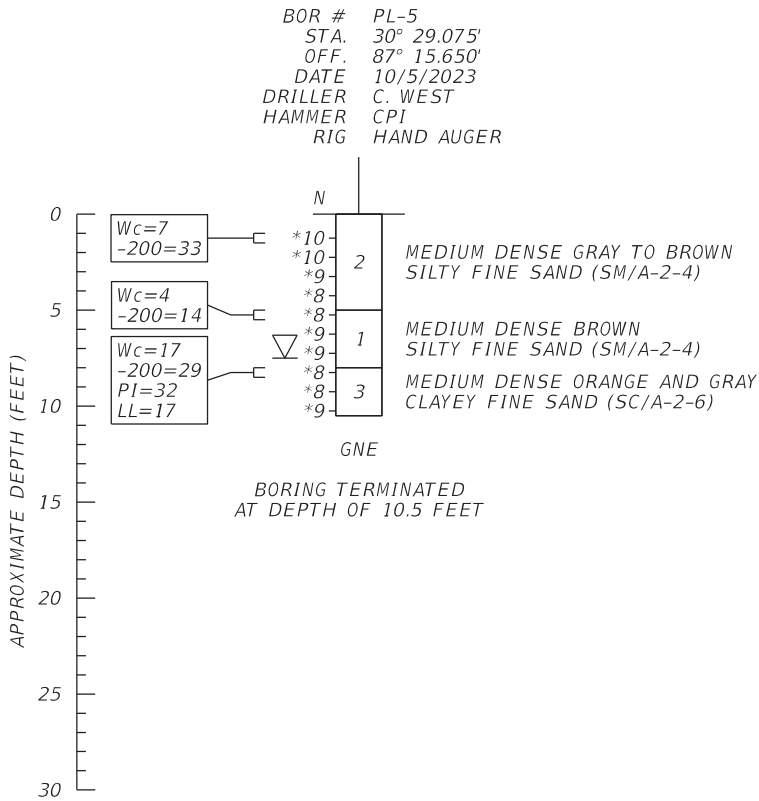
KEVIN T. SWEENEY, P.E.
P.E. LICENSE NUMBER 89538
ENVIRONMENTAL & GEOTECHNICAL SPECIALISTS, INC.
3676 HARTSFIELD ROAD
TALLAHASSEE, FLORIDA 32303

No.	Date	Issue / Revision	<div>Environmental & Geotechnical Specialists, Inc.</div> <div><div>EGS</div><div>3676 HARTSFIELD ROAD TALLAHASSEE, FLORIDA 32303 OFFICE (850) 386-1253</div></div>	<div>KEVIN T. SWEENEY, P.E. FL P.E. NO.: 89538</div> <div>ENVIRONMENTAL & GEOTECHNICAL SPECIALISTS, INC. 3676 HARTSFIELD ROAD TALLAHASSEE, FL 32303 CERTIFICATE OF AUTHORIZATION: 6222</div>	FLORIDA-ALABAMA TPO			REPORT OF SOIL BORINGS	DWG NO.		
									AB-001		
									SHEET NO.		
					ROAD NO.	COUNTY	FINANCIAL PROJECT ID				
					NORTH W STREET	ESCAMBIA	451524-1-38-01				

THE OFFICIAL RECORD OF THIS SHEET IS THE ELECTRONIC FILE DIGITALLY SIGNED AND SEALED UNDER RULE 61G15-23.004, F.A.C. GENERAL DISCLAIMER: TO THE BEST OF THE ARCHITECT'S OR ENGINEER'S KNOWLEDGE, THE PLANS AND SPECIFICATIONS COMPLY WITH THE APPLICABLE MINIMUM BUILDING CODES AND THE APPLICABLE FIRE SAFETY STANDARD AS DETERMINED BY THE LOCAL AUTHORITY IN ACCORDANCE WITH FBC 110.8.4.4 AND CHAPTER 63, FLORIDA STATUTES.

PARKING LOT

STORMWATER MANAGEMENT FACILITIES (SWMF)



THIS ITEM HAS BEEN DIGITALLY SIGNED AND SEALED BY:

ON THE DATE ADJACENT TO THE SEAL.

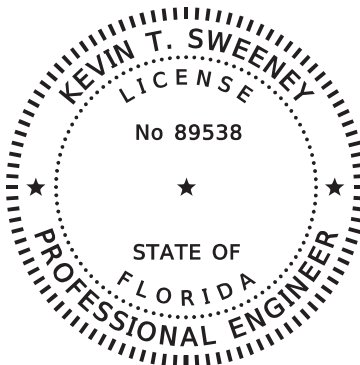
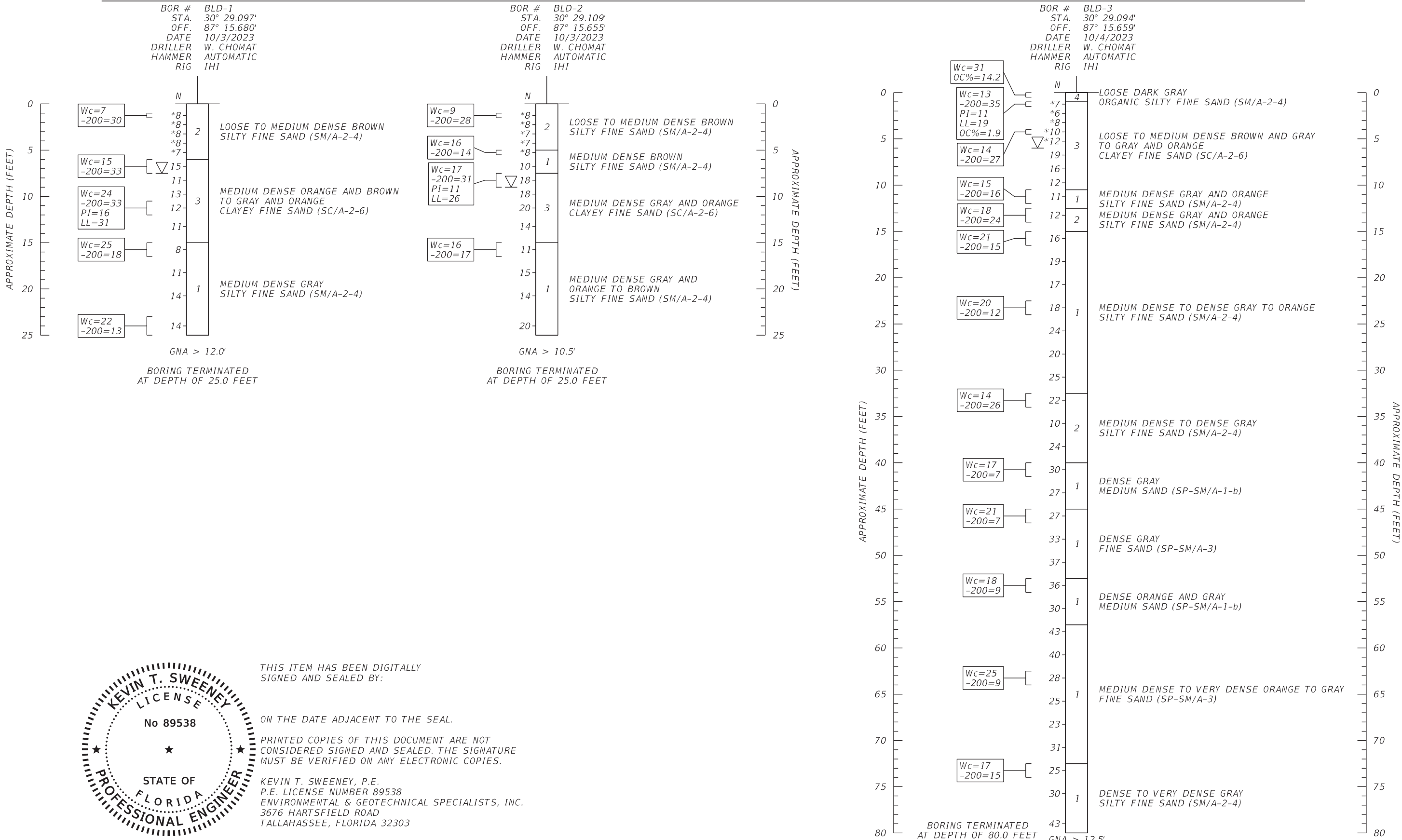
PRINTED COPIES OF THIS DOCUMENT ARE NOT CONSIDERED SIGNED AND SEALED. THE SIGNATURE MUST BE VERIFIED ON ANY ELECTRONIC COPIES.

KEVIN T. SWEENEY, P.E.
P.E. LICENSE NUMBER 89538
ENVIRONMENTAL & GEOTECHNICAL SPECIALISTS, INC.
3676 HARTSFIELD ROAD
TALLAHASSEE, FLORIDA 32303

No.	Date	Issue / Revision	<div>Environmental & Geotechnical Specialists, Inc.</div> <div>EGS</div> <div>3676 HARTSFIELD ROAD TALLAHASSEE, FLORIDA 32303 OFFICE (850) 386-1253</div>	<div>KEVIN T. SWEENEY, P.E. FL P.E. NO.: 89538</div> <div>ENVIRONMENTAL & GEOTECHNICAL SPECIALISTS, INC. 3676 HARTSFIELD ROAD TALLAHASSEE, FL 32303 CERTIFICATE OF AUTHORIZATION: 6222</div>	FLORIDA-ALABAMA TPO			REPORT OF SOIL BORINGS	DWG NO.		
									AB-002		
									SHEET NO.		
					ROAD NO.	COUNTY	FINANCIAL PROJECT ID				
					NORTH W STREET	ESCAMBIA	451524-1-38-01				

THE OFFICIAL RECORD OF THIS SHEET IS THE ELECTRONIC FILE DIGITALLY SIGNED AND SEALED UNDER RULE 61G15-23.004, F.A.C. GENERAL DISCLAIMER: TO THE BEST OF THE ARCHITECT'S OR ENGINEER'S KNOWLEDGE, THE PLANS AND SPECIFICATIONS COMPLY WITH THE APPLICABLE MINIMUM BUILDING CODES AND THE APPLICABLE FIRE SAFETY STANDARD AS DETERMINED BY THE LOCAL AUTHORITY IN ACCORDANCE WITH FBC 110.8.4.4 AND CHAPTER 63, FLORIDA STATUTES.

RTMC AND ECRC BUILDING



THIS ITEM HAS BEEN DIGITALLY SIGNED AND SEALED BY:

ON THE DATE ADJACENT TO THE SEAL.

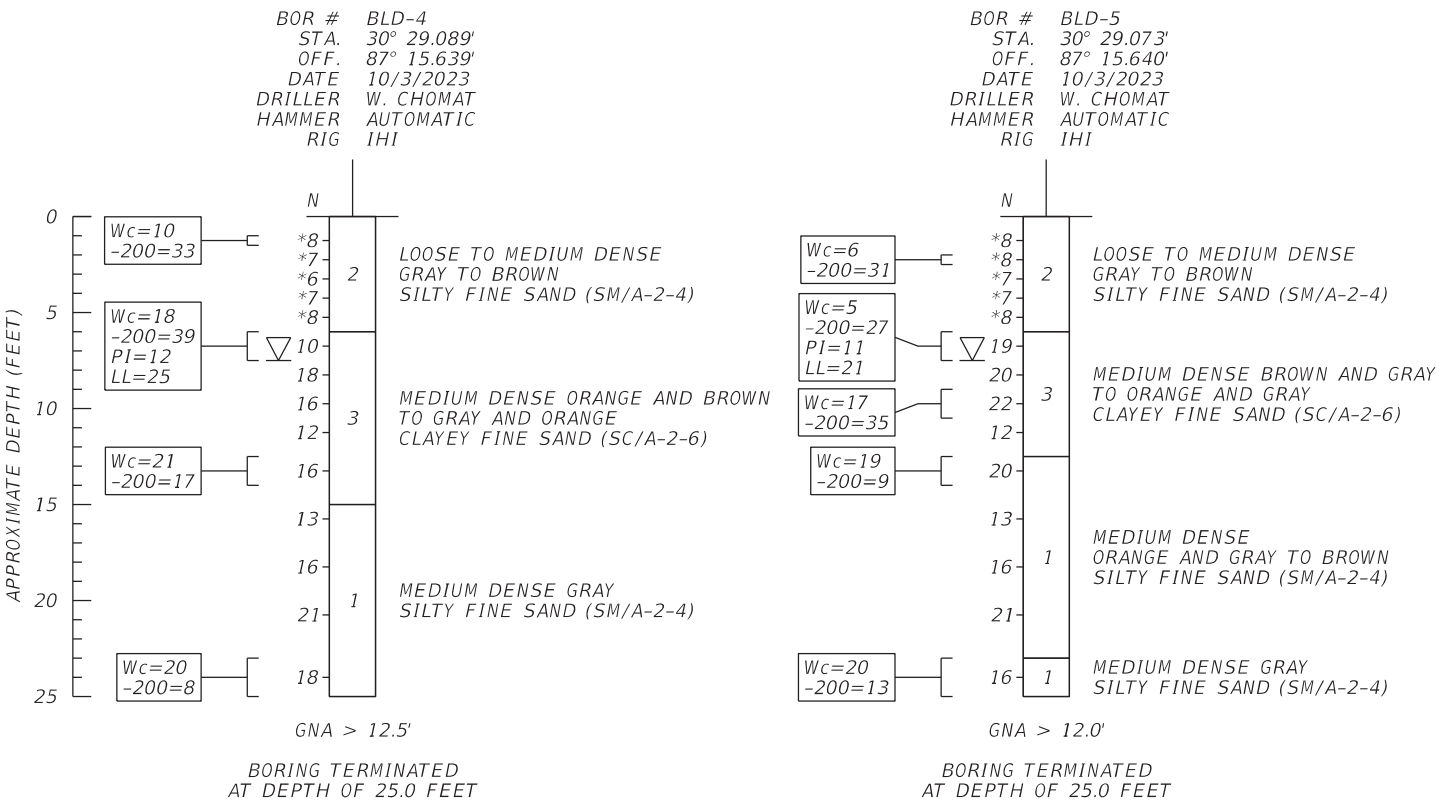
PRINTED COPIES OF THIS DOCUMENT ARE NOT CONSIDERED SIGNED AND SEALED. THE SIGNATURE MUST BE VERIFIED ON ANY ELECTRONIC COPIES.

KEVIN T. SWEENEY, P.E.
P.E. LICENSE NUMBER 89538
ENVIRONMENTAL & GEOTECHNICAL SPECIALISTS, INC.
3676 HARTSFIELD ROAD
TALLAHASSEE, FLORIDA 32303

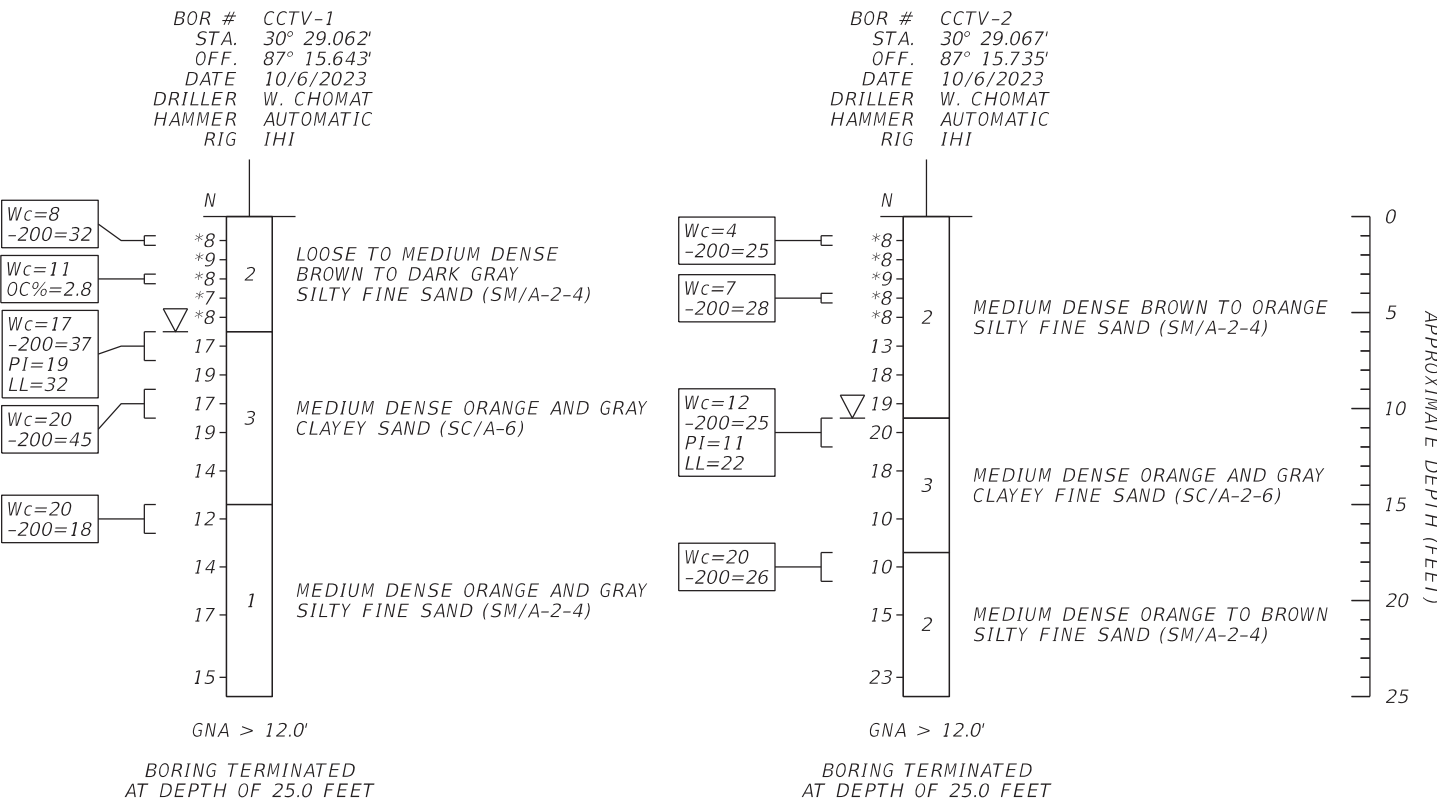
No.	Date	Issue / Revision	Environmental & Geotechnical Specialists, Inc.			FLORIDA-ALABAMA TPO			REPORT OF SOIL BORINGS		DWG NO.
			EGS 3676 HARTSFIELD ROAD TALLAHASSEE, FLORIDA 32303 OFFICE (850) 386-1253			ROAD NO.	COUNTY	FINANCIAL PROJECT ID			AB-003
			KEVIN T. SWEENEY, P.E. FL P.E. NO.: 89538 ENVIRONMENTAL & GEOTECHNICAL SPECIALISTS, INC. 3676 HARTSFIELD ROAD TALLAHASSEE, FL 32303 CERTIFICATE OF AUTHORIZATION: 6222			NORTH W STREET	ESCAMBIA	451524-1-38-01			SHEET NO.

THE OFFICIAL RECORD OF THIS SHEET IS THE ELECTRONIC FILE DIGITALLY SIGNED AND SEALED UNDER RULE 61G15-23.004, F.A.C. GENERAL DISCLAIMER: TO THE BEST OF THE ARCHITECT'S OR ENGINEER'S KNOWLEDGE, THE PLANS AND SPECIFICATIONS COMPLY WITH THE APPLICABLE MINIMUM BUILDING CODES AND THE APPLICABLE FIRE SAFETY STANDARD AS DETERMINED BY THE LOCAL AUTHORITY IN ACCORDANCE WITH FBC 110.8.4.4 AND CHAPTER 63, FLORIDA STATUTES.

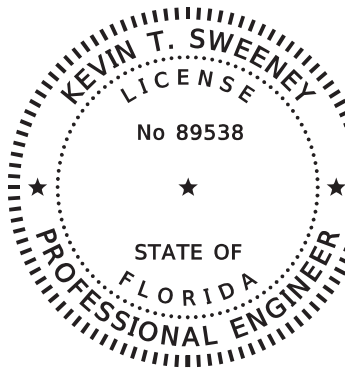
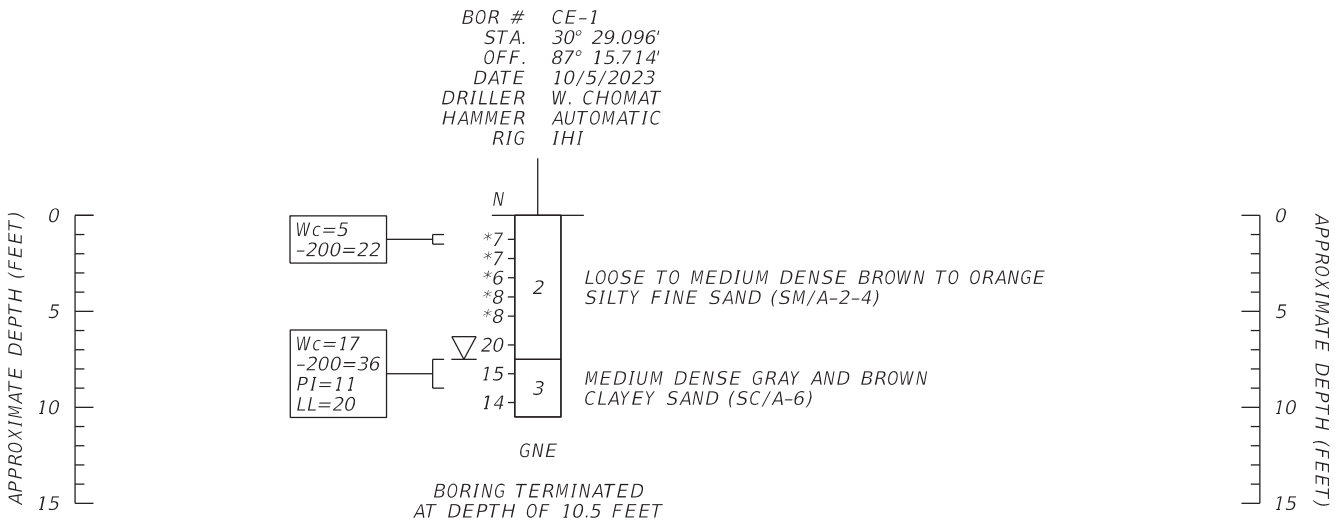
RTMC AND ECRC BUILDING



CCTV POLES



CHILLER/ELECTRICAL YARD



THIS ITEM HAS BEEN DIGITALLY SIGNED AND SEALED BY:

ON THE DATE ADJACENT TO THE SEAL.

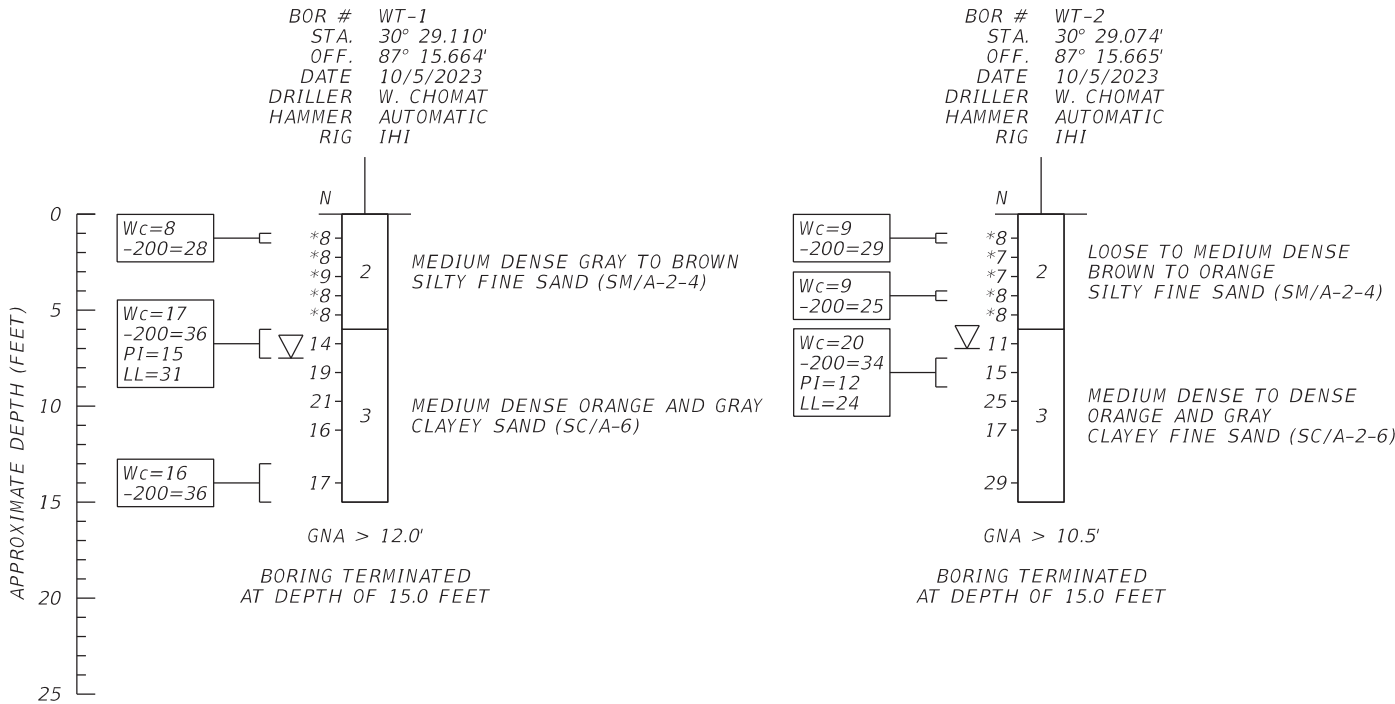
PRINTED COPIES OF THIS DOCUMENT ARE NOT CONSIDERED SIGNED AND SEALED. THE SIGNATURE MUST BE VERIFIED ON ANY ELECTRONIC COPIES.

KEVIN T. SWEENEY, P.E.
P.E. LICENSE NUMBER 89538
ENVIRONMENTAL & GEOTECHNICAL SPECIALISTS, INC.
3676 HARTSFIELD ROAD
TALLAHASSEE, FLORIDA 32303

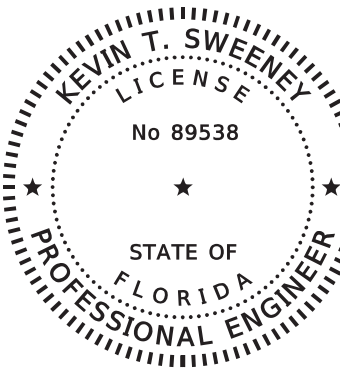
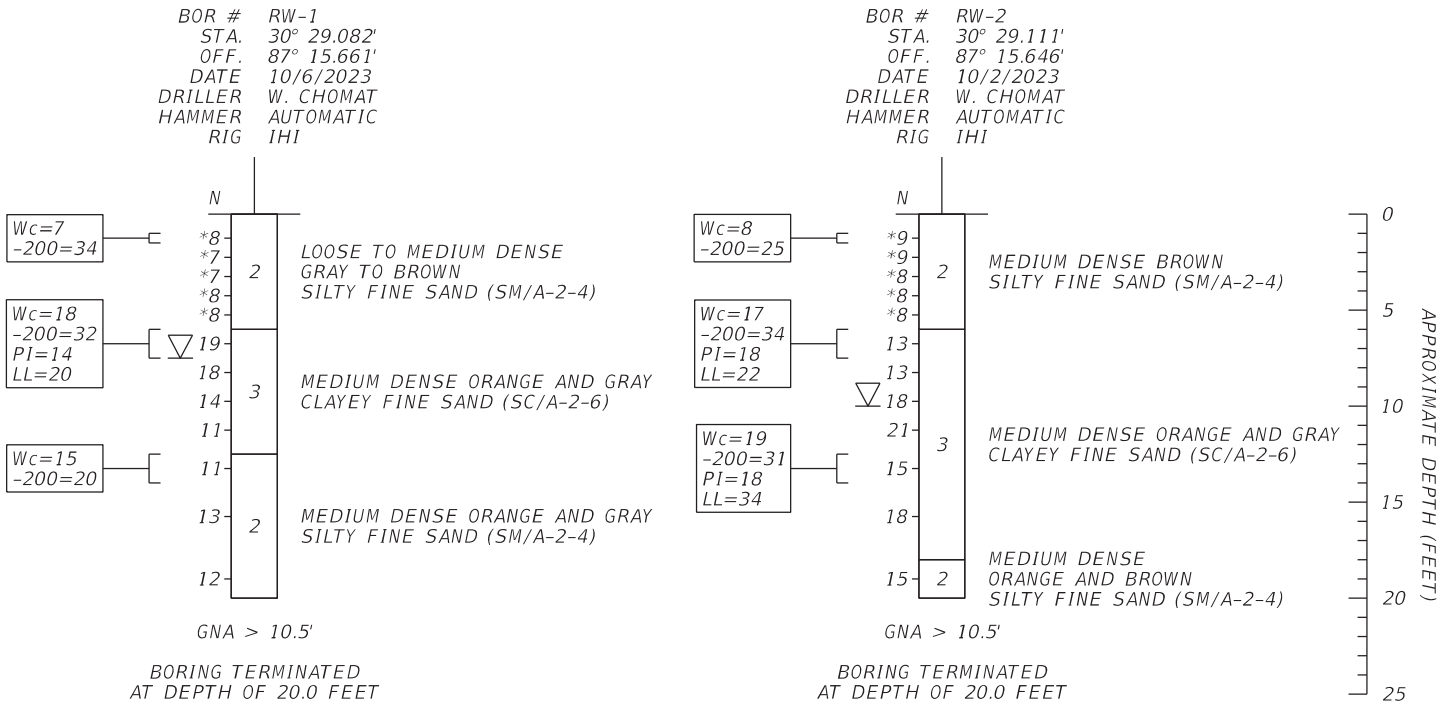
No.	Date	Issue / Revision

THE OFFICIAL RECORD OF THIS SHEET IS THE ELECTRONIC FILE DIGITALLY SIGNED AND SEALED UNDER RULE 61G15-23.004, F.A.C. GENERAL DISCLAIMER: TO THE BEST OF THE ARCHITECT'S OR ENGINEER'S KNOWLEDGE, THE PLANS AND SPECIFICATIONS COMPLY WITH THE APPLICABLE MINIMUM BUILDING CODES AND THE APPLICABLE FIRE SAFETY STANDARD AS DETERMINED BY THE LOCAL AUTHORITY IN ACCORDANCE WITH FBC 110.8.4.4 AND CHAPTER 63, FLORIDA STATUTES.

WATER TANKS



RETAINING WALLS



THIS ITEM HAS BEEN DIGITALLY
SIGNED AND SEALED BY:

ON THE DATE ADJACENT TO THE SEAL.

PRINTED COPIES OF THIS DOCUMENT ARE NOT
CONSIDERED SIGNED AND SEALED. THE SIGNATURE
MUST BE VERIFIED ON ANY ELECTRONIC COPIES.

KEVIN T. SWEENEY, P.E.
P.E. LICENSE NUMBER 89538
ENVIRONMENTAL & GEOTECHNICAL SPECIALISTS, INC.
3676 HARTSFIELD ROAD
TALLAHASSEE, FLORIDA 32303

No.		Date	Issue / Revision		<div>Environmental & Geotechnical Specialists, Inc.</div> <div>EGS</div> <div>3676 HARTSFIELD ROAD TALLAHASSEE, FLORIDA 32303 OFFICE (850) 386-1253</div>	<div>KEVIN T. SWEENEY, P.E. FL P.E. NO.: 89538</div> <div>ENVIRONMENTAL & GEOTECHNICAL SPECIALISTS, INC. 3676 HARTSFIELD ROAD TALLAHASSEE, FL 32303 CERTIFICATE OF AUTHORIZATION: 6222</div>	FLORIDA-ALABAMA TPO			REPORT OF SOIL BORINGS	DWG NO.		
											AB-005		
											SHEET NO.		
								ROAD NO.	COUNTY	FINANCIAL PROJECT ID			
								NORTH W STREET	ESCAMBIA	451524-1-38-01			

THE OFFICIAL RECORD OF THIS SHEET IS THE ELECTRONIC FILE DIGITALLY SIGNED AND SEALED UNDER RULE 61G15-23.004, F.A.C.
GENERAL DISCLAIMER: TO THE BEST OF THE ARCHITECT'S OR ENGINEER'S KNOWLEDGE, THE PLANS AND SPECIFICATIONS COMPLY WITH THE APPLICABLE MINIMUM BUILDING CODES AND THE
APPLICABLE FIRE SAFETY STANDARD AS DETERMINED BY THE LOCAL AUTHORITY IN ACCORDANCE WITH FBC 110.8.4.4 AND CHAPTER 63, FLORIDA STATUTES.