

GENERAL PLUMBING NOTES

1. ALL PLUMBING WORK SHALL MEET ALL OF THE REQUIREMENTS OF THE FOLLOWING:

A. FLORIDA BUILDING CODE (FBC) 8TH EDITION (2023) (EFFECTIVE DECEMBER 31, 2023): THIS CODE INCLUDES THE 2023 FBC BUILDING, MECHANICAL, PLUMBING, ENERGY CONSERVATION, FUEL GAS, ACCESSIBILITY, AND TEST PROTOCOLS VOLUMES. FURTHER, SEE "REFERENCED STANDARDS" IN THE FBC BUILDING CHAPTER 35; FBC MECHANICAL CHAPTER 15; FBC PLUMBING CHAPTER 15; FBC ENERGY CONSERVATION CHAPTER 6; AND FBC FUEL GAS CHAPTER 8).

B. 8TH EDITION OF THE FLORIDA FIRE PREVENTION CODE (FFPC): THIS CODE ALSO INCLUDES THE FLORIDA VERSIONS OF NFPA 1 AND NFPA 101. (EFFECTIVE DECEMBER 31, 2023).

C. 2020 NATIONAL ELECTRIC CODE.

D. STATE OF FLORIDA, DEPARTMENT OF ENVIRONMENTAL REGULATION RULES.

E. FDOT BUILDING FACILITIES DESIGN MANUAL 625-202-016-F - REVISED MAY 2020.
2. PROVIDE COMPLETE PLUMBING SYSTEMS AS DETAILED. WORK CONSISTS OF FURNISHING ALL MATERIALS, EQUIPMENT, AND SERVICES REQUIRED FOR COMPLETE SYSTEMS.
3. IN GENERAL, PLANS ARE SCHEMATIC ONLY AND SHOULD NOT BE SCALED. ALL FLOOR DRAINS IN MECHANICAL ROOMS/CLOSETS, SHALL BE FIELD VERIFIED AND COORDINATED WITH THE HVAC EQUIPMENT/PAD LOCATIONS.
4. COORDINATE WITH OTHER TRADES TO AVOID CONFLICTS.
5. COORDINATE LOCATIONS OF FLOOR DRAINS, CLEAN OUTS AND FLOOR HYDRANTS WITH THE ARCHITECTURAL DRAWINGS.
6. UNLESS OTHERWISE NOTED, ALL PIPING SHALL BE RUN IN CONCEALED SPACES.
7. WATER PIPING SHALL BE HARD DRAWN COPPER TYPE L WITH WROUGHT COPPER FITTINGS AND 95-5 SOLDER.
8. ALL SOIL, WASTE, AND VENT PIPING SHALL BE SCHEDULE 40 PVC DWV.
9. SANITARY PIPING BELOW THE GROUND FLOOR SLAB SHALL BE SCHEDULE 40 DWV PVC SOIL PIPE AND FITTINGS.
10. VENT THROUGH ROOF TERMINALS SHALL BE LOCATED 10'-0" AWAY FROM ANY BUILDING INTAKE OPENINGS. COORDINATE WITH THE MECHANICAL CONTRACTOR.
11. ALL FIRE STOPPING SHALL BE INSTALLED IN CONFORMANCE WITH THE MANUFACTURER'S U.L. DETAILS OF THE PRODUCTS USED SPECIFICALLY ON THIS PROJECT. APPLICABLE U.L. DETAILS SHALL BE SUBMITTED FOR THE ENGINEER'S REVIEW AND A COPY SHALL BE AVAILABLE ON SITE FOR USE BY THE AUTHORITY HAVING JURISDICTION.
12. UNLESS NOTED OTHERWISE, ALL PLUMBING EQUIPMENT, MATERIALS, AND WORKMANSHIP SHALL BE GUARANTEED FOR A ONE YEAR PERIOD FROM DATE OF ACCEPTANCE.
13. PROVIDE ALL CUTTING REQUIRED FOR THE INSTALLATION OF PLUMBING WORK. FINISH PATCHING SHALL BE COORDINATED WITH THE GENERAL CONTRACTOR/CONSTRUCTION MANAGER.
14. ALL SOIL AND WASTE PIPING 2-1/2" AND SMALLER SHALL BE SLOPED AT 1/4" PER FOOT. LARGER WASTE PIPING SHALL BE SLOPED AT 1/8" PER FOOT. ALL HORIZONTAL RAIN LEADER LINES SHALL BE SLOPED AT 1/8" PER FOOT.
15. ALL WATER PIPING SHALL BE SUPPORTED RIGIDLY AND IN LINE FROM THE BUILDING STRUCTURE. OFFSET PIPING TO AVOID STRUCTURAL MEMBERS, CANTS, FLASHING, MECHANICAL AND ELECTRICAL EQUIPMENT, ETC.
16. VERIFY ALL SITE RELATED SANITARY & WATER CONNECTIONS PRIOR TO STARTING WORK. SHOULD DEPTHS BE DIFFERENT THAN THAT SHOWN HEREIN ADVISE ENGINEER IMMEDIATELY.
17. PRIOR TO SITE UTILITIES WORK, CALCULATE THE INVERTS FOR ALL SANITARY WASTE CONNECTIONS BASED ON ACTUAL CONDITIONS. COORDINATE SANITARY WASTE LOCATIONS AND INVERTS WITH SITE UTILITIES CONTRACTOR.
18. WASTE AND STORM LINES RECEIVING BELOW AMBIENT TEMPERATURE CONDENSATE SHALL BE INSULATED WITH 1/2" FLEXIBLE UNICELLULAR FOAM (ARMAFLEX OR EQUIVALENT) INSULATION TO GRADE.
19. VALVES AND FITTINGS SHALL BE OF SAME SIZE OF LINE ON WHICH THEY ARE INDICATED.

20. INSTALL WATER HAMMER SHOCK ARRESTORS AT EACH FIXTURE OR BATTERY OF FIXTURES WHERE REQUIRED. ARRESTORS SHALL BE FACTORY FABRICATED. INSTALL ARRESTORS AND SIZE PER PLUMBING AND DRAINAGE INSTITUTE STANDARD P.D.I WH-201. AIR CHAMBERS SHALL NOT BE CONSIDERED EQUIVALENT TO WATER HAMMER SHOCK ARRESTORS.
21. ALL FLOOR DRAINS SHALL BE PROVIDED WITH TRAP PRIMER VALVE AND FITTINGS. REFER TO THE TRAP PRIMER DETAIL ON DRAWING AP-501. EXPOSED PIPE SHALL BE COPPER, AND PIPE IN SLAB AND BELOW MAY BE CPVC.
22. ROUTE ALL PIPING CONCEALED ABOVE CEILINGS, WITHIN WALLS, OR IN CHASES EXCEPT WHERE SPECIFICALLY NOTED OR IN THE MECHANICAL ROOM. ANY PIPING EXPOSED TO VIEW SHALL BE RELOCATED AT NO ADDITIONAL COST TO THE OWNER IF DETERMINED BY THE OWNER TO BE OBJECTIONABLE.
23. PROVIDE ACCESS PANELS TO ALL VALVES WITHIN CHASES OR ABOVE NON- ACCESSIBLE CEILINGS. REFER TO ARCHITECTURAL DRAWINGS FOR CEILING TYPES.
24. PROVIDE DIELECTRIC ISOLATION/SEPARATION (I.E. UNIONS) AT CONNECTIONS OF DISSIMILAR METALS.
25. ROUGH-IN ALL WASTE AND SUPPLIES TO SPECIAL EQUIPMENT ACCORDING TO MANUFACTURE'S SHOP DRAWINGS AND MAKE FINAL CONNECTIONS TO RENDER EQUIPMENT FULLY OPERATIONAL. ALL SUPPLIES SHALL BE VALVED. PROVIDE VACUUM BREAKERS OR CHECK VALVES WHERE REQUIRED BY AUTHORITY HAVING JURISDICTION.
26. PLUMBING CONTRACTOR SHALL TAG ALL VALVES WITH STAMPED BRASS TAGS. PROVIDE FIELD COORDINATED VALVE SCHEDULE MOUNTED IN 8-1/2"x11" PICTURE FRAME IN THE MECHANICAL ROOM.
27. ALL EXPOSED PLUMBING PENETRATIONS SHALL HAVE ESCUTCHEON PLATES.
28. ANY PLUMBING ITEMS EXPOSED TO VIEW SHALL BE PLACED PER THE ARCHITECTURAL DRAWINGS.
29. PROVIDE A BLUE STICKER ON CEILING GRID TEE BELOW ANY WATER VALVE ABOVE CEILING FOR LOCATION FACILITATION.
30. 3/8" HOT WATER RUNOUTS FROM HOT WATER RECIRCULATING LINES OR INSTA-HOT WATER HEATERS SHALL NOT EXCEED 30" IN LENGTH.
31. ONE WEEK PRIOR TO SUBSTANTIAL COMPLETION, SUBMIT DATE STAMPED VIDEO DOCUMENTING CONDITION OF UNDERGROUND WASTE LINES. ANY LINES FOUND TO BE OCCLUDED SHALL BE RODDED AND FLUSHED OUT AND THEN VIDEO DOCUMENTED AGAIN.
32. SEE TSP FOR ADDITIONAL REQUIREMENTS.

PLUMBING LEGEND

↗ - - - ↘

VENT PIPING

↗ ——— ↘

WASTE PIPING (SAN)

↗ - · - · - ↘

COLD WATER PIPING (CW)

↗ · - - - - ↘

HOT WATER PIPING (HW)

↗ — · - - ↘

HOT WATER RETURN PIPING (HWR)

○ ——— ↘

PIPING UP

○ — ↗ ↘

PIPING DOWN

⊗

HOT WATER BALANCING VALVE

P#

PLUMBING FIXTURE IDENTIFICATION. SEE PLUMBING FIXTURE SCHEDULE

VTR

VENT THROUGH ROOF

⬆

ELEVATION

AFF

ABOVE FINISHED FLOOR

BFF

BELOW FINISHED FLOOR

S

SANITARY

W

WASTE

V

VENT

COORDINATE AND VERIFY EXACT LOCATIONS OF ALL PLUMBING FIXTURES WITH ARCHITECTURAL DRAWINGS

REFER TO RISER ON DRAWING AP-903 FOR DOMESTIC WATER AND DRAWING AP-901 FOR WASTE AND VENT LINE SIZING

| PLUMBING DRAWING INDEX | |
|------------------------|---|
| SHEET NUMBER | SHEET NAME |
| AP-001 | PLUMBING LEGEND AND GENERAL NOTES |
| AP-100 | PLUMBING SITE PLAN |
| AP-111 | PLUMBING PLAN |
| AP-301 | PLUMBING SECTIONS |
| AP-401 | ENLARGED PLUMBING PLANS |
| AP-501 | PLUMBING DETAILS |
| AP-601 | PLUMBING EQUIPMENT SCHEDULE |
| AP-602 | PLUMBING FIXTURE SCHEDULE |
| AP-603 | PLUMBING FIXTURE SCHEDULE - CONTINUED |
| AP-901 | PLUMBING - SANITARY WASTE ISOMETRIC |
| AP-902 | PLUMBING - PARTIAL SANITARY WASTE ISOMETRIC |
| AP-903 | PLUMBING - DOMESTIC WATER ISOMETRIC |
| AP-904 | PLUMBING - PARTIAL DOMESTIC WATER ISOMETRIC |
| SHEETS: 13 | |

| No. | Date | Issue / Revision |
|-----|------|------------------|
| | | |



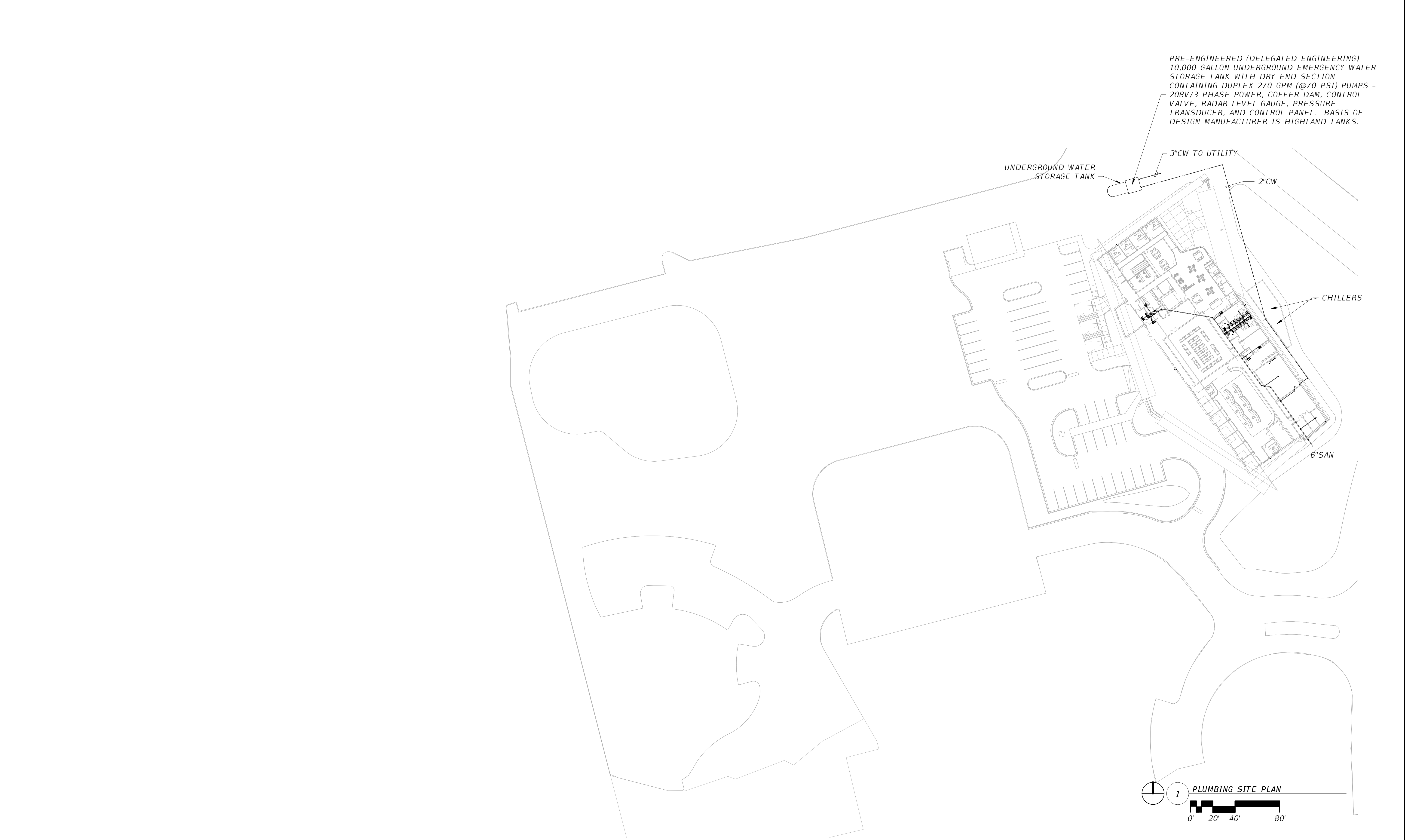
STEPHEN R. FORKNER, PE
PE 80532

WGI, INC.
3111 W. DR. MARTIN LUTHER KING JR. BLVD.
SUITE 375
TAMPA, FL 33607
ENGINEERING BUSINESS LICENSE NO.: 33574

| FLORIDA-ALABAMA TPO | | |
|---------------------|----------|----------------------|
| ROAD NO. | COUNTY | FINANCIAL PROJECT ID |
| NORTH W STREET | ESCAMBIA | 451524-1-38-01 |

| PLUMBING LEGEND AND GENERAL NOTES | |
|-----------------------------------|--|
| | |

| DWG NO. |
|-----------|
| AP-001 |
| SHEET NO. |
| |



| No. | Date | Issue / Revision |
|-----|------|------------------|
| | | |



STEPHEN R. FORKNER, PE
PE 80532

WGI, INC.
3111 W. DR. MARTIN LUTHER KING JR. BLVD.
SUITE 375
TAMPA, FL 33607
ENGINEERING BUSINESS LICENSE NO.: 33574

| FLORIDA-ALABAMA TPO | | |
|---------------------|----------|----------------------|
| ROAD NO. | COUNTY | FINANCIAL PROJECT ID |
| NORTH W STREET | ESCAMBIA | 451524-1-38-01 |

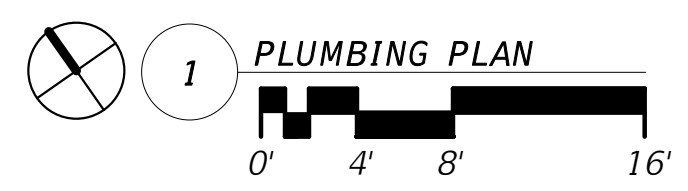
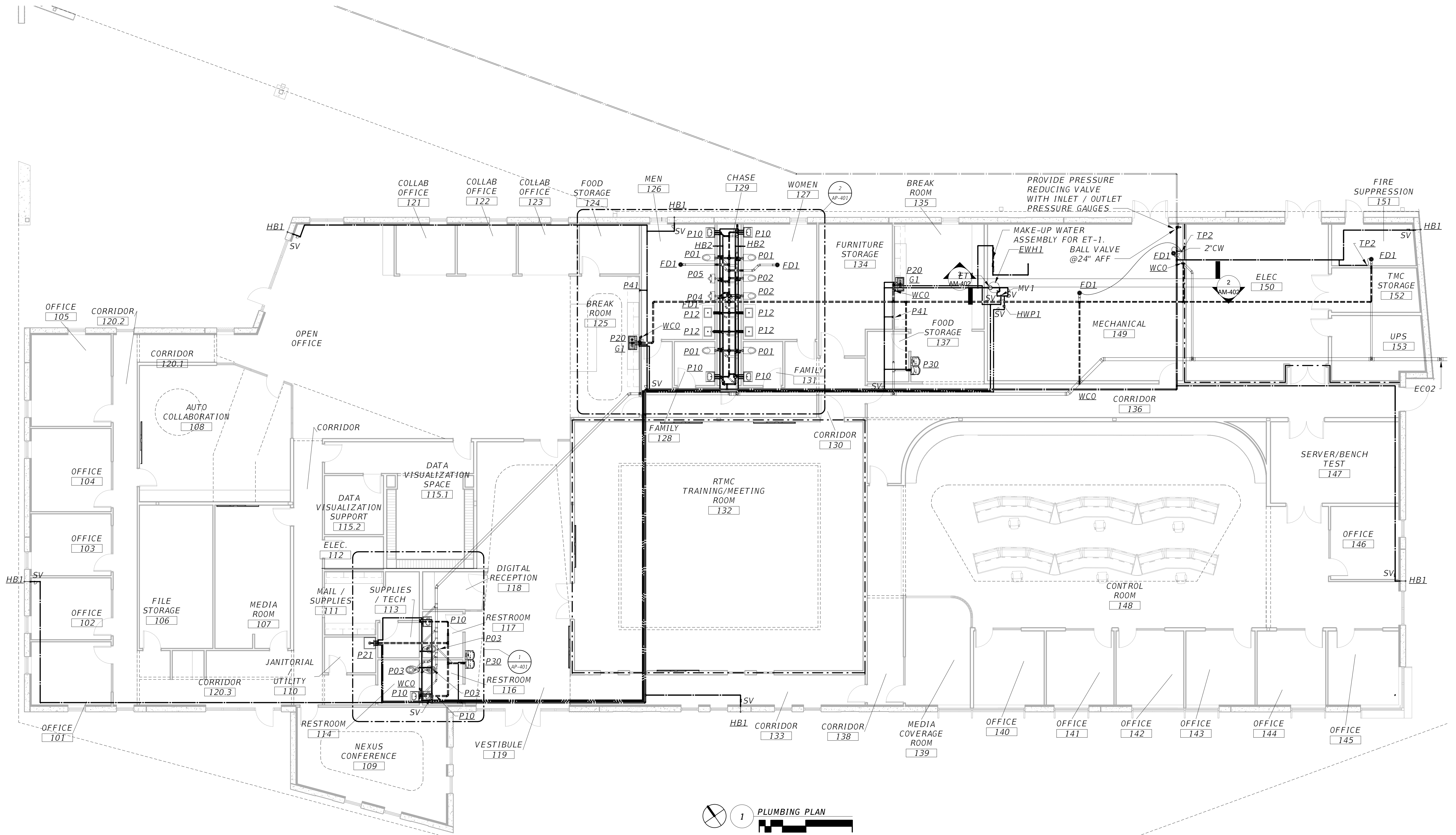
PLUMBING SITE PLAN


| DWG NO. |
|-----------|
| AP-100 |
| SHEET NO. |
| |

THE OFFICIAL RECORD OF THIS SHEET IS THE ELECTRONIC FILE DIGITALLY SIGNED AND SEALED UNDER RULE 61G15-23.004, F.A.C.
GENERAL DISCLAIMER: TO THE BEST OF THE ARCHITECT'S OR ENGINEER'S KNOWLEDGE, THE PLANS AND SPECIFICATIONS COMPLY WITH THE APPLICABLE MINIMUM BUILDING CODES AND THE APPLICABLE FIRE SAFETY STANDARDS AS DETERMINED BY THE LOCAL AUTHORITY IN ACCORDANCE WITH FBC 1108.4.4 AND CHAPTER 63, FLORIDA STATUTES.

3/31/2025 2:49:31 PM

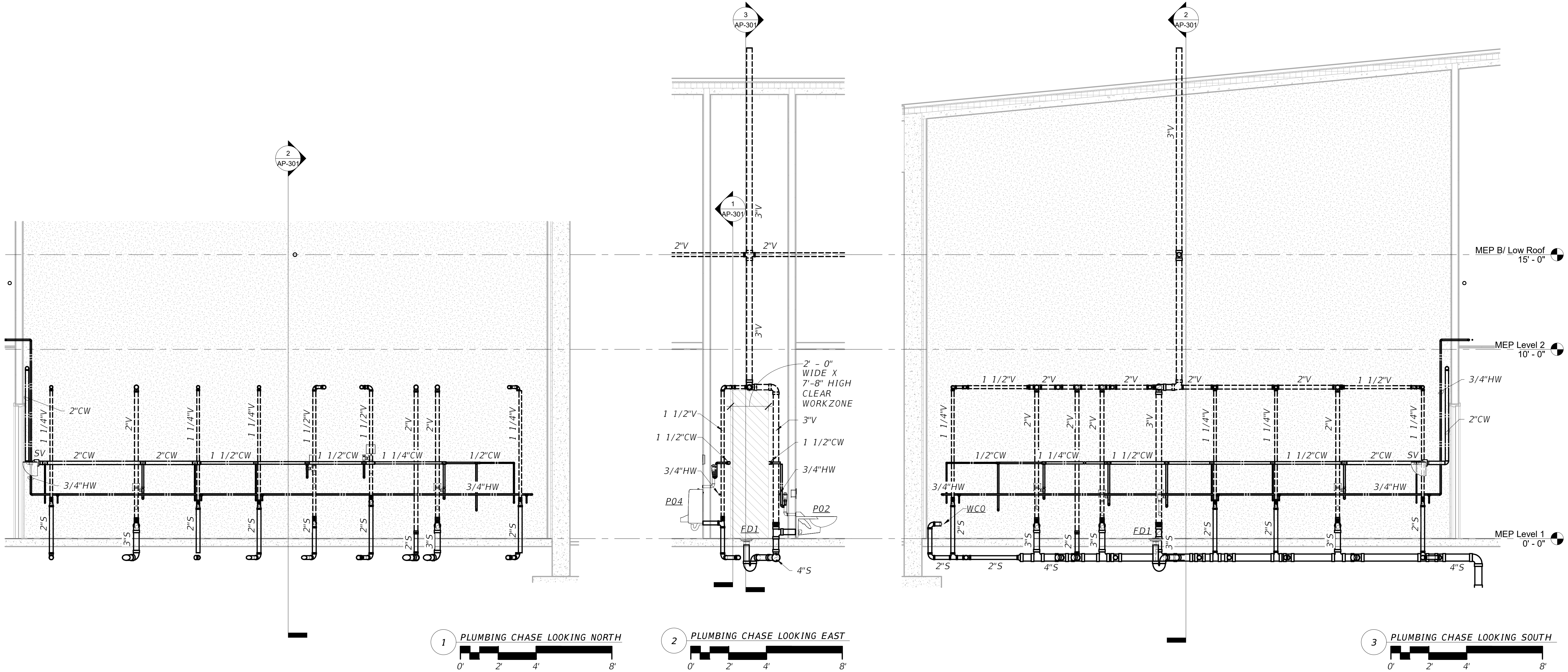
Autodesk Docs\\9345.00 ECR\\9345.00 Escambia ECR WGINEPEP R24.rvt



| No. | Date | Issue / Revision |  | STEPHEN R. FORKNER, PE PE 80532 WGI, INC. 3111 W. DR. MARTIN LUTHER KING JR. BLVD. SUITE 375 TAMPA, FL 33607 ENGINEERING BUSINESS LICENSE NO.: 33574 | FLORIDA-ALABAMA TPO | | | PLUMBING PLAN | DWG NO. |
|-----|------|------------------|--|--|---------------------|----------|----------------------|---------------|-----------|
| | | | | | ROAD NO. | COUNTY | FINANCIAL PROJECT ID | | AP-111 |
| | | | | | NORTH W STREET | ESCAMBIA | 451524-1-38-01 | | SHEET NO. |
| | | | | | | | | | |

THE OFFICIAL RECORD OF THIS SHEET IS THE ELECTRONIC FILE DIGITALLY SIGNED AND SEALED UNDER RULE 61G15-23.004, F.A.C.
GENERAL DISCLAIMER: TO THE BEST OF THE ARCHITECT'S OR ENGINEER'S KNOWLEDGE, THE PLANS AND SPECIFICATIONS COMPLY WITH THE APPLICABLE MINIMUM BUILDING CODES AND THE APPLICABLE FIRE SAFETY STANDARDS AS DETERMINED BY THE LOCAL AUTHORITY IN ACCORDANCE WITH FBC 1108.4.4 AND CHAPTER 63, FLORIDA STATUTES.

ALL WORK IN THE PLUMBING CHASE SHALL BE COMPLETED IN A WORKMANLIKE MANNER, NEAT AND TIGHT TO THE WALLS TO ENSURE APPROPRIATE ACCESS TO FACILITATE MAINTENANCE WORK. MAINTAIN A MINIMUM OF 2'-0" WIDE BY 7'-10" HIGH CLEAR WORK ZONE THROUGHOUT THE LENGTH OF THE CHASE.



| No. | Date | Issue / Revision |
|-----|------|------------------|
| | | |



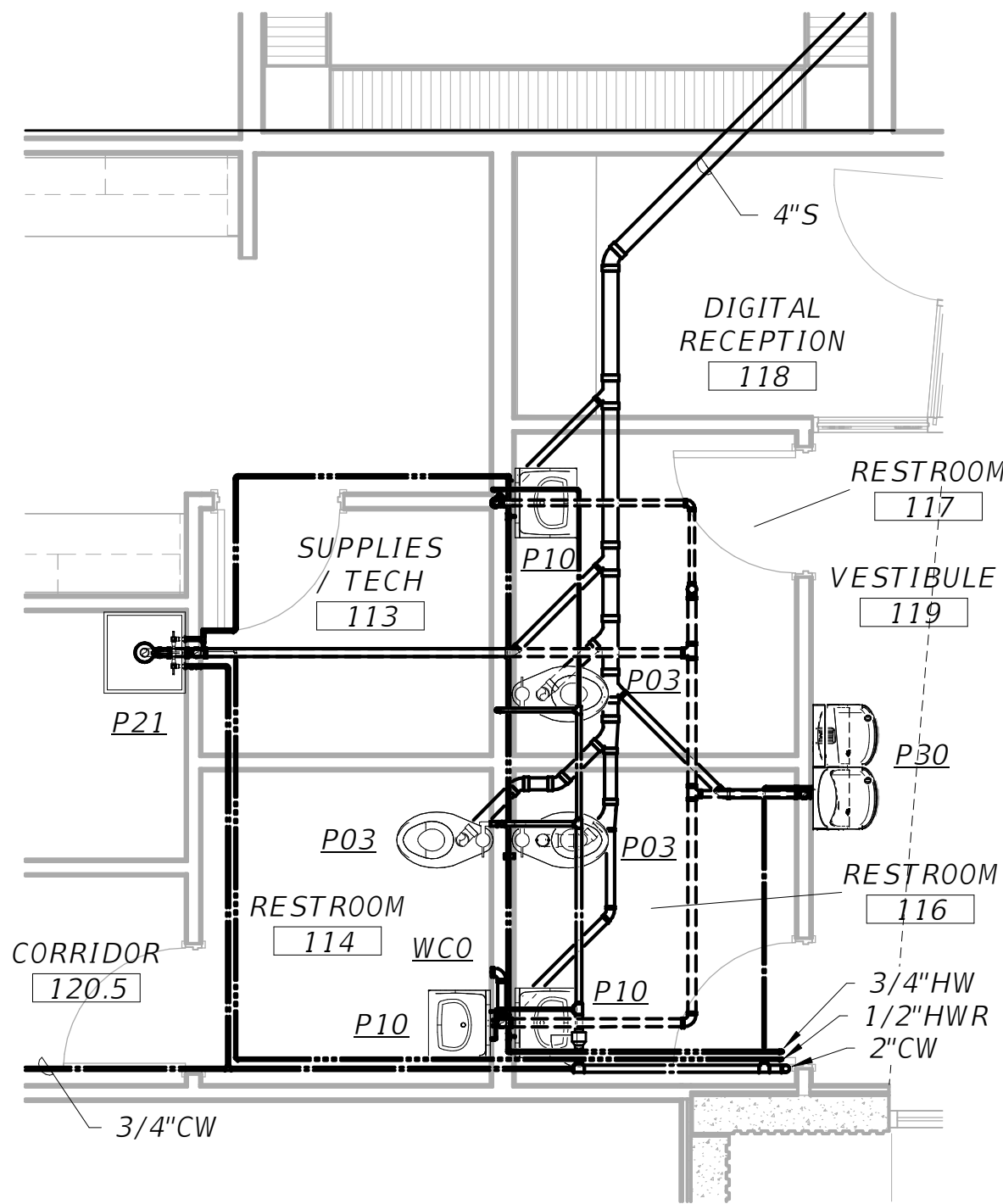
STEPHEN R. FORKNER, PE
PE 80532
WGI, INC.
3111 W. DR. MARTIN LUTHER KING JR. BLVD.
SUITE 375
TAMPA, FL 33607
ENGINEERING BUSINESS LICENSE NO.: 33574

| FLORIDA-ALABAMA TPO | | |
|---------------------|----------|----------------------|
| ROAD NO. | COUNTY | FINANCIAL PROJECT ID |
| NORTH W STREET | ESCAMBIA | 451524-1-38-01 |

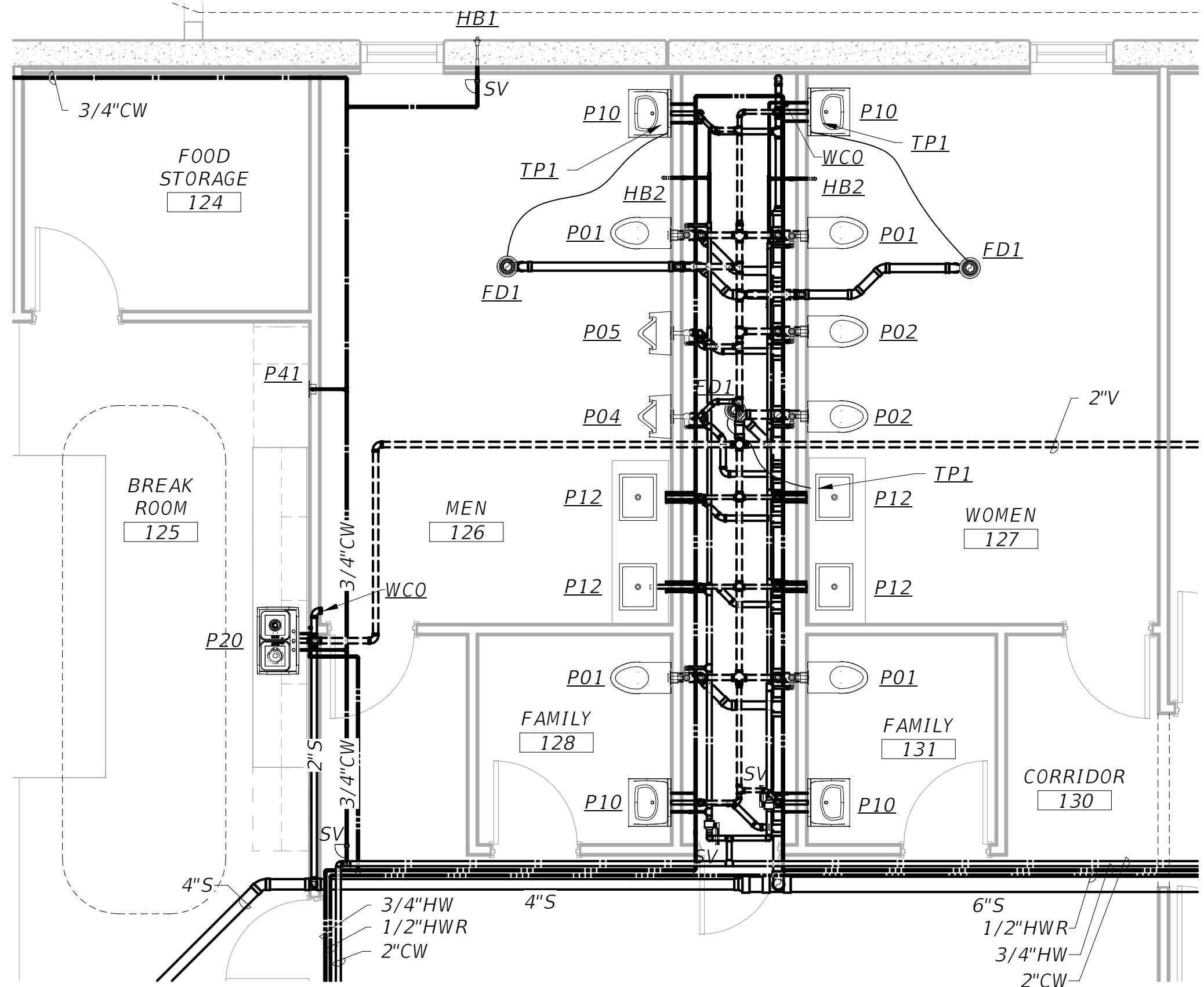
PLUMBING SECTIONS

| DWG NO. |
|-----------|
| AP-301 |
| SHEET NO. |
| |

THE OFFICIAL RECORD OF THIS SHEET IS THE ELECTRONIC FILE DIGITALLY SIGNED AND SEALED UNDER RULE 61G15-23.004, F.A.C.
GENERAL DISCLAIMER: TO THE BEST OF THE ARCHITECT'S OR ENGINEER'S KNOWLEDGE, THE PLANS AND SPECIFICATIONS COMPLY WITH THE APPLICABLE MINIMUM BUILDING CODES AND THE APPLICABLE FIRE SAFETY STANDARDS AS DETERMINED BY THE LOCAL AUTHORITY IN ACCORDANCE WITH FBC 1108.4.4 AND CHAPTER 63, FLORIDA STATUTES.



1 LOBBY AREA RESTROOMS PLUMBING PLAN



2 GROUP RESTROOMS PLUMBING PLAN

| No. | Date | Issue / Revision |
|-----|------|------------------|
| | | |



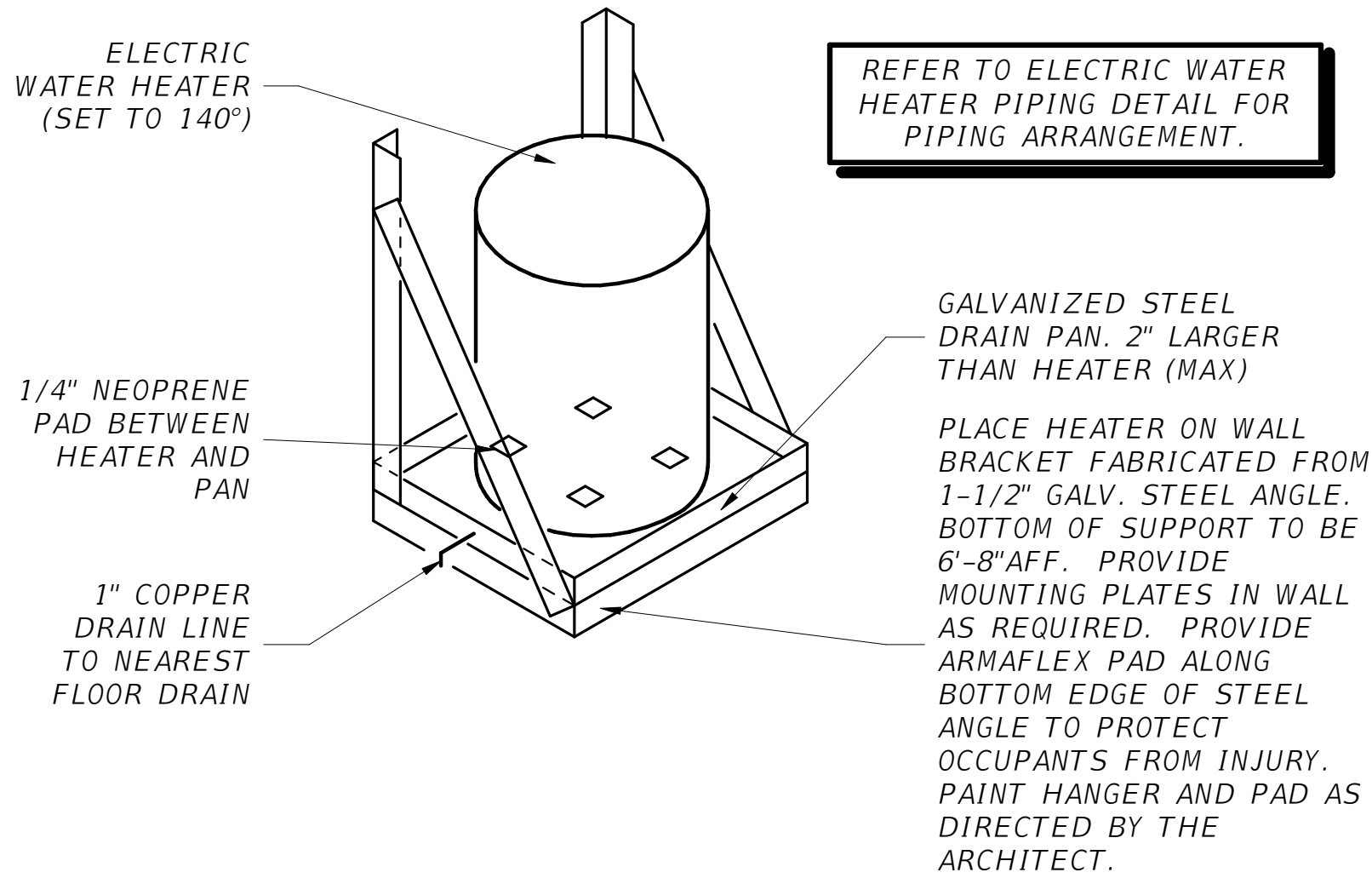
STEPHEN R. FORKNER, PE
PE 80532
WGI, INC.
3111 W. DR. MARTIN LUTHER KING JR. BLVD.
SUITE 375
TAMPA, FL 33607
ENGINEERING BUSINESS LICENSE NO.: 33574

FLORIDA-ALABAMA TPO

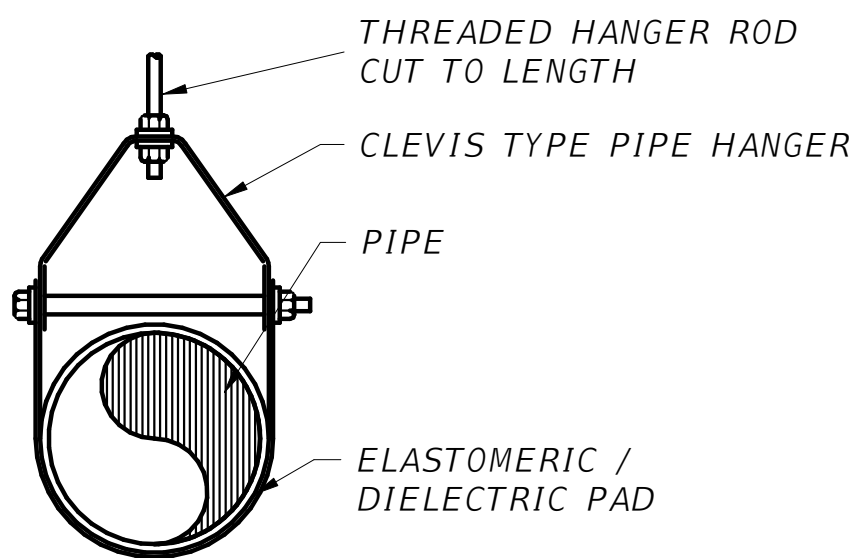
| ROAD NO. | COUNTY | FINANCIAL PROJECT ID |
|----------------|----------|----------------------|
| NORTH W STREET | ESCAMBIA | 451524-1-38-01 |

ENLARGED PLUMBING PLANS

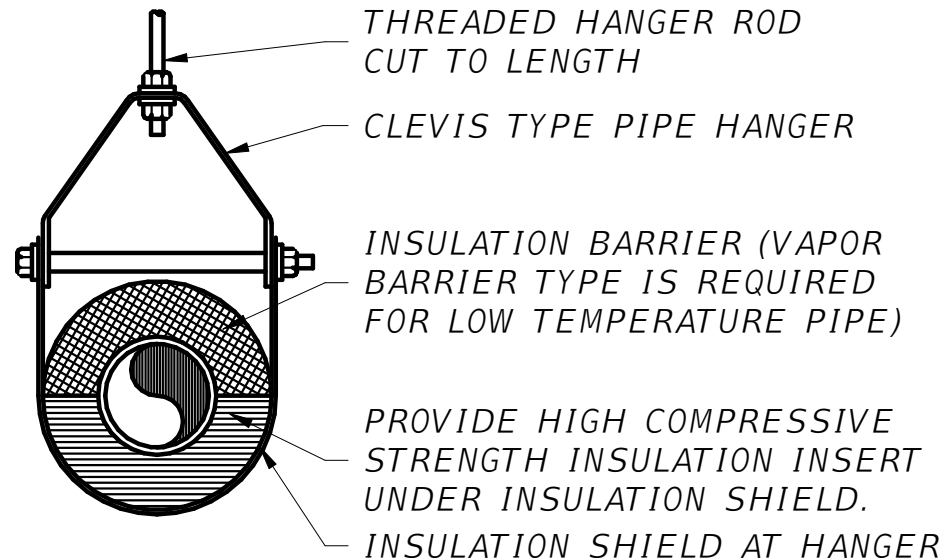
| DWG NO. |
|-----------|
| AP-401 |
| SHEET NO. |
| |



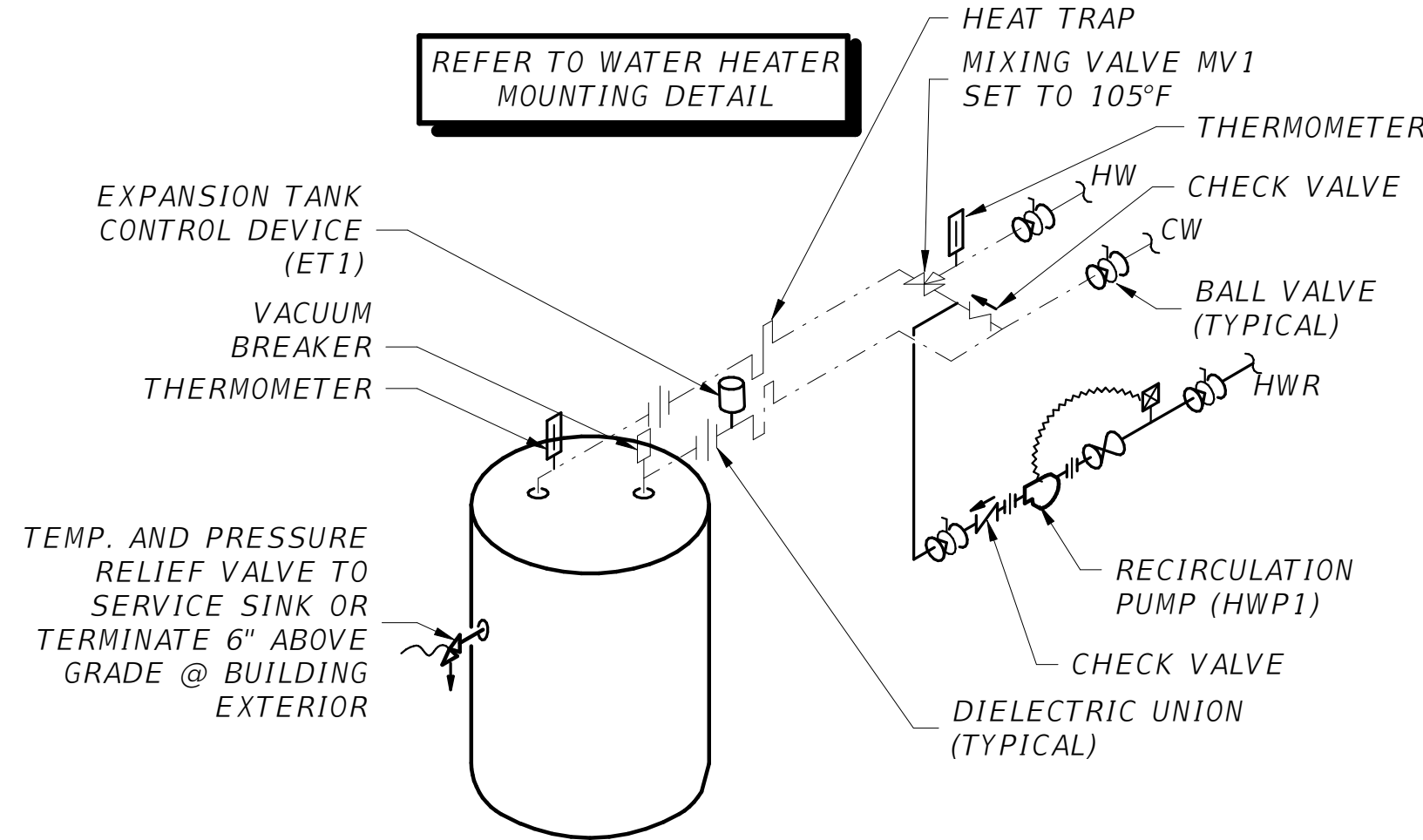
ELECTRIC WATER HEATER
WALL HUNG DETAIL
NOT TO SCALE



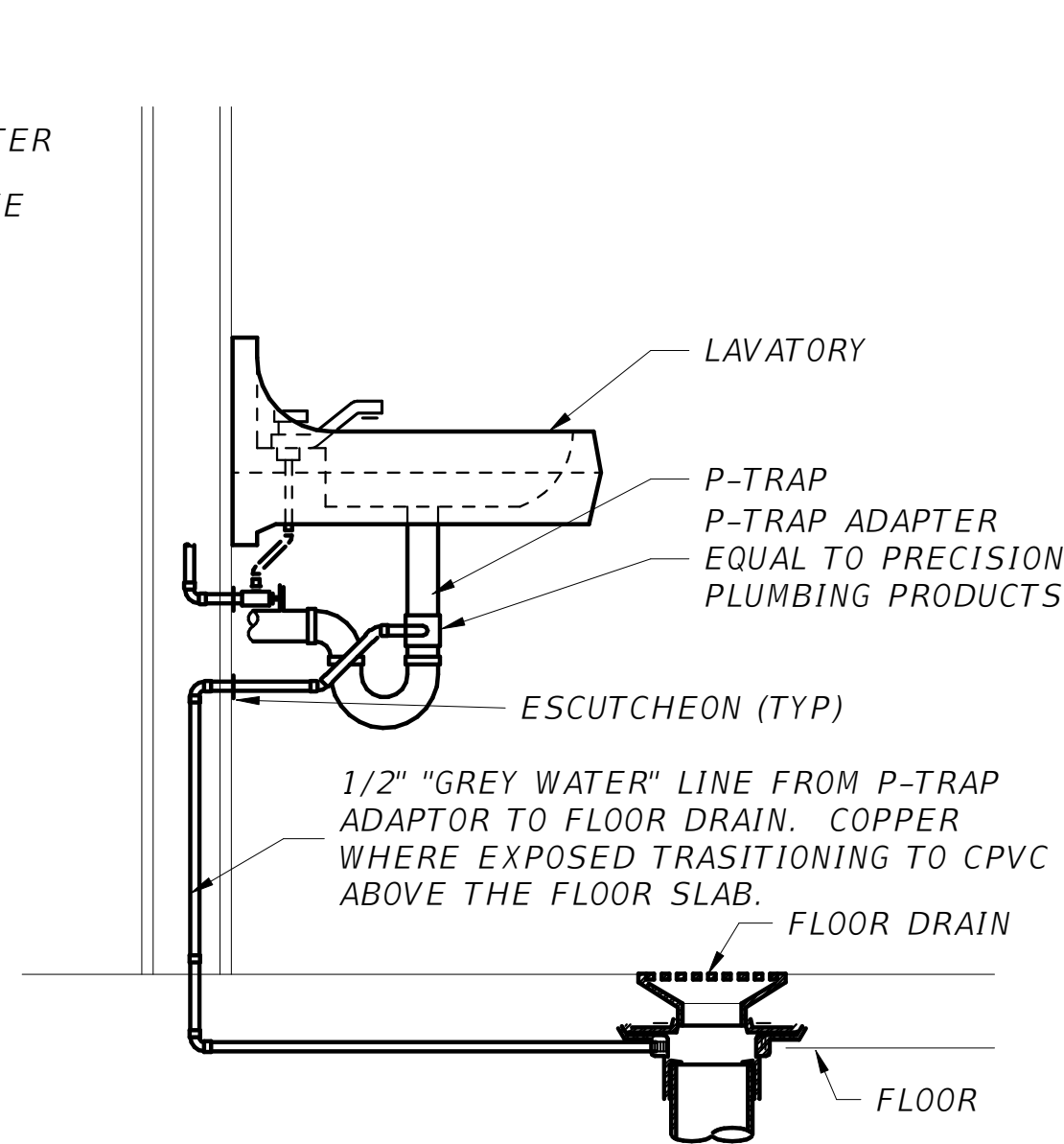
NON-INSULATED
PIPE HANGER SUPPORT
NOT TO SCALE



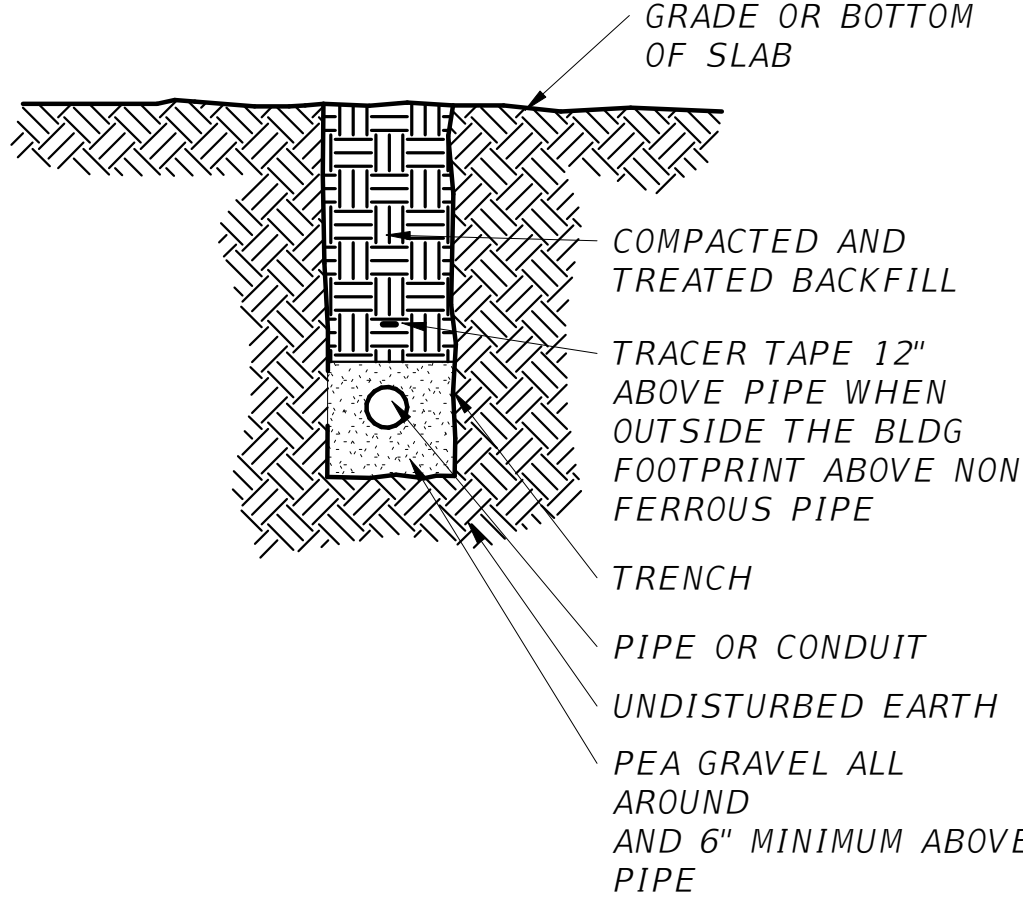
INSULATED
PIPE HANGER SUPPORT
NOT TO SCALE



ELECTRIC WATER HEATER
PIPING DETAIL WITH
RECIRCULATION PUMP
NOT TO SCALE



TRAP PRIMER DETAIL
NOT TO SCALE

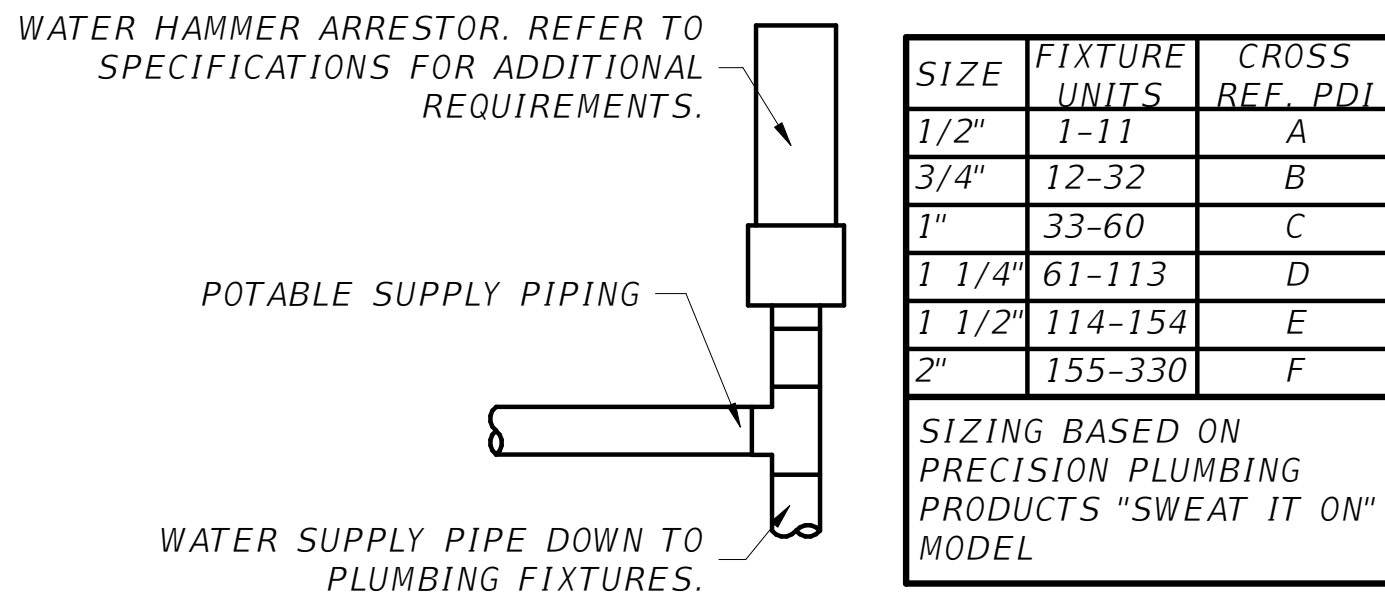


TRENCHING FOR PLUMBING PIPING
NOT TO SCALE

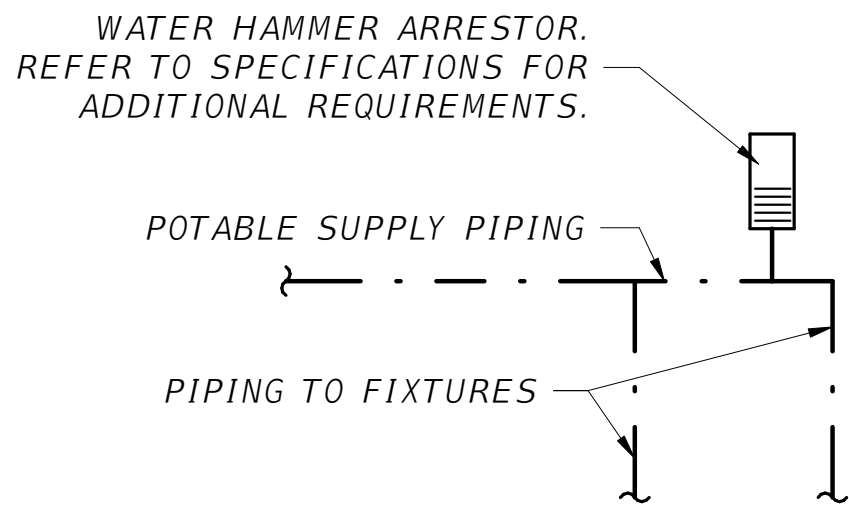
TRENCHING FOR PLUMBING LINES:

OVEREXCAVATION: WHERE TRENCHES ARE EXCAVATED BELOW THE INSTALLATION LEVEL OF THE PIPE SUCH THAT THE BOTTOM OF THE TRENCH DOES NOT FORM THE BED FOR THE PIPE, THE TRENCH SHALL BE BACKFILLED TO THE INSTALLATION LEVEL OF THE BOTTOM OF THE PIPE WITH SAND OR FINE GRAVEL PLACED IN LAYERS NOT GREATER THAN 6" IN DEPTH AND SUCH BACKFILL SHALL BE COMPACTED AFTER EACH PLACEMENT.

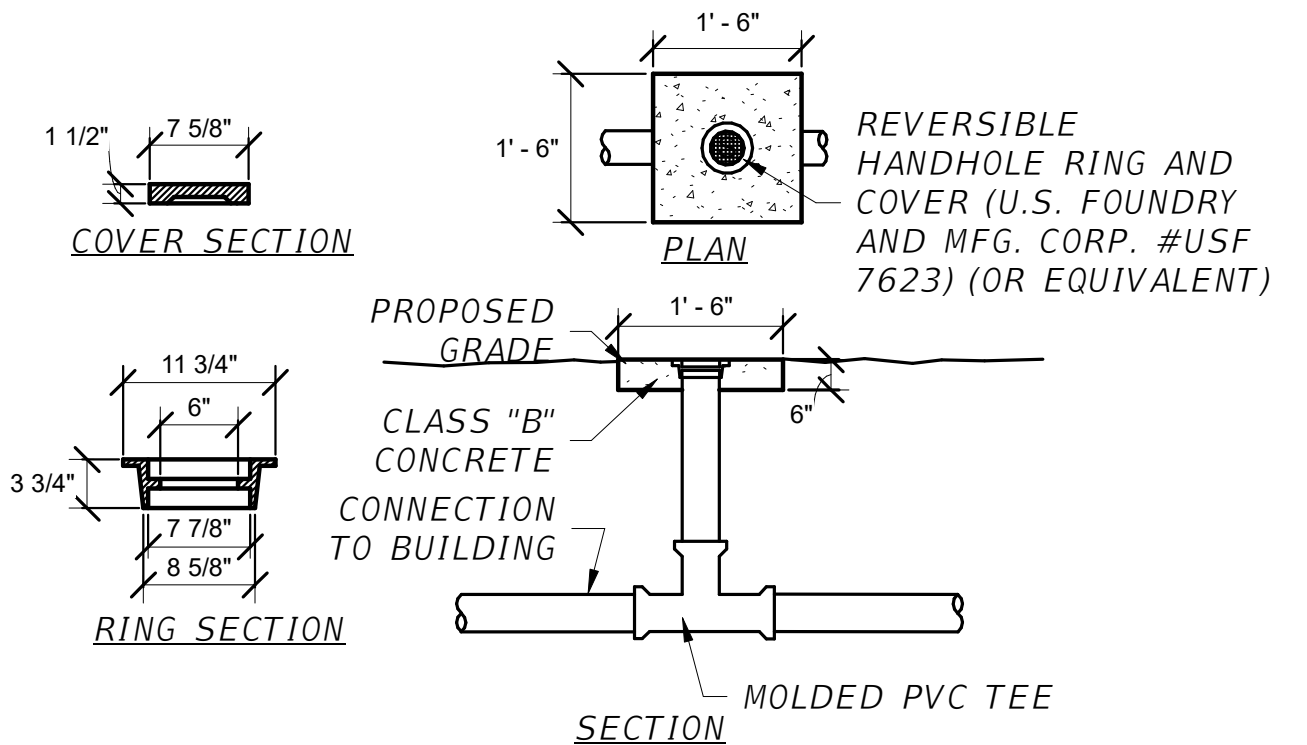
BACKFILLING: BACKFILL SHALL BE FREE FROM DISCARDED CONSTRUCTION MATERIAL AND DEBRIS. LOOSE EARTH FREE FROM ROCKS, BROKEN CONCRETE AND FROZEN CHUNKS SHALL BE PLACED IN THE TRENCH IN 6" LAYERS AND TAMPED IN PLACE UNTIL THE CROWN OF THE PIPE IS COVERED BY 12" OF TAMPED EARTH. THE BACKFILL UNDER AND BESIDE THE PIPE SHALL BE COMPACTED FOR PIPE SUPPORT. BACKFILL SHALL BE BROUGHT UP EVENLY ON BOTH SIDES OF THE PIPE SO THAT THE PIPE REMAINS ALIGNED. IN INSTANCES WHERE THE MANUFACTURER'S INSTRUCTIONS FOR MATERIALS ARE MORE RESTRICTIVE THAN THOSE PRESCRIBED BY THE CODE, THE MATERIAL SHALL BE INSTALLED IN ACCORDANCE WITH THE MORE RESTRICTIVE REQUIREMENT.



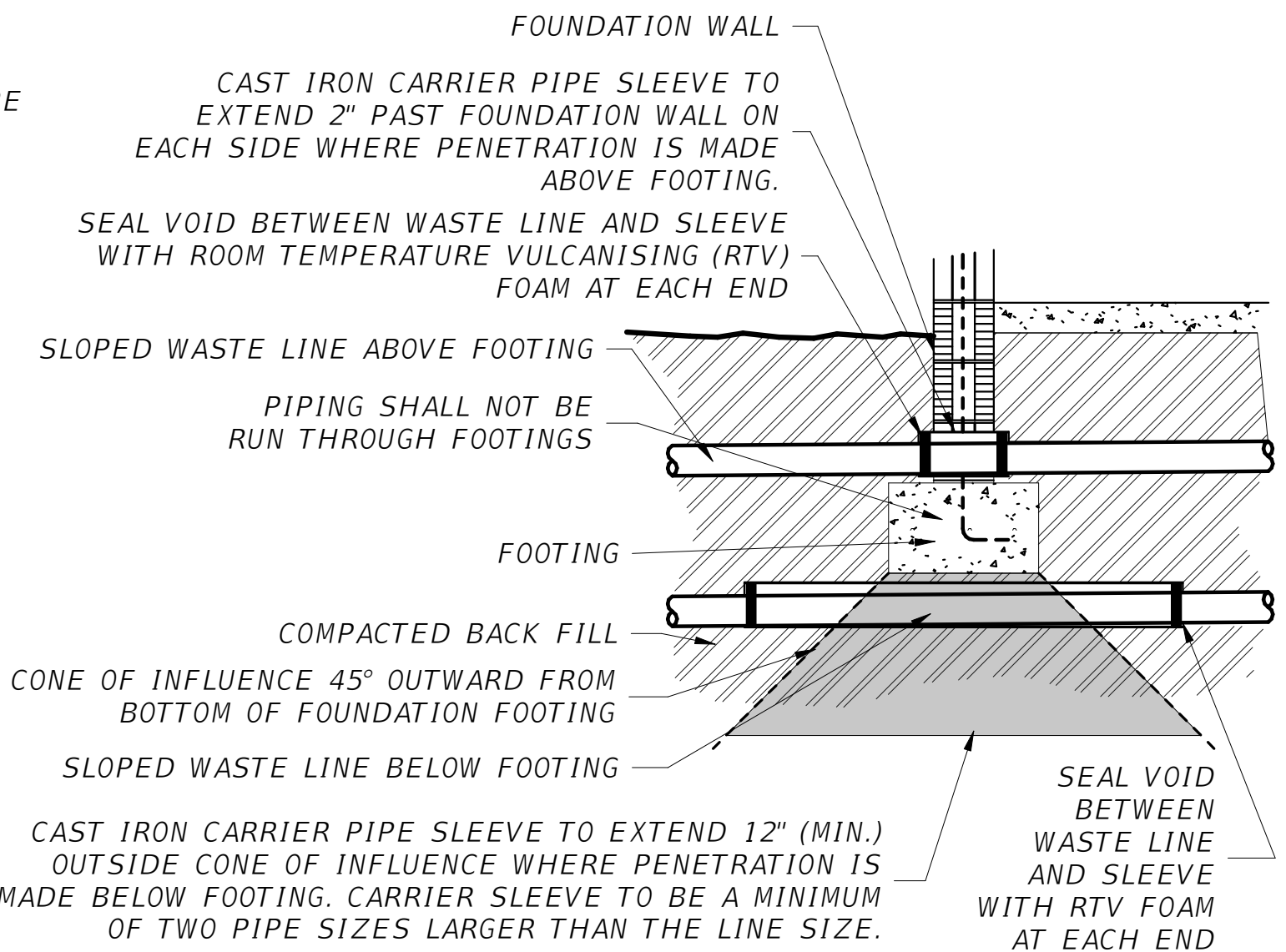
WATER HAMMER ARRESTOR DETAIL
NOT TO SCALE



WATER HAMMER ARRESTOR DETAIL
NOT TO SCALE



EXTERIOR CLEAN-OUT DETAIL (EC02)
NOT TO SCALE



FOUNDATION PIPE SLEEVE DETAIL
NOT TO SCALE

| No. | Date | Issue / Revision |
|-----|------|------------------|
| | | |



STEPHEN R. FORKNER, PE
PE 80532
WGI, INC.
3111 W. DR. MARTIN LUTHER KING JR. BLVD.
SUITE 375
TAMPA, FL 33607
ENGINEERING BUSINESS LICENSE NO.: 33574

FLORIDA-ALABAMA TPO

| ROAD NO. | COUNTY | FINANCIAL PROJECT ID |
|----------------|----------|----------------------|
| NORTH W STREET | ESCAMBIA | 451524-1-38-01 |

PLUMBING DETAILS

| DWG NO. |
|-----------|
| AP-501 |
| SHEET NO. |
| |

| No. | Date | Issue / Revision |
|-----|------|------------------|
| | | |



STEPHEN R. FORKNER, PE
PE 80532


WGI, INC.
3111 W. DR. MARTIN LUTHER KING JR. BLVD.
SUITE 375
TAMPA, FL 33607
ENGINEERING BUSINESS LICENSE NO.: 33574

| FLORIDA-ALABAMA TPO | | |
|---------------------|----------|----------------------|
| ROAD NO. | COUNTY | FINANCIAL PROJECT ID |
| NORTH W STREET | ESCAMBIA | 451524-1-38-01 |


| | |
|-----------------------------|-----------|
| PLUMBING EQUIPMENT SCHEDULE | DWG NO. |
| | AP-601 |
| | SHEET NO. |

| PLUMBING EQUIPMENT SCHEDULE | | | | | | | |
|-----------------------------|--|--|-------------|------|--------|------|------|
| MARK | DESCRIPTION | SELECTION | W OR S | TRAP | VENT | HW | CW |
| FD1 | FLOOR DRAIN 3" FLOOR DRAIN WITH TRAP PRIMER CONNECTED TO DOMESTIC COLD WATER LINE AT LAVATORY. NICKEL BRONZE TOP. 6" ROUND, CAST IRON BODY WITH FLASHING COLLAR AND ADJUSTABLE STRAINER. | SMITH 2005-A-6" | 3" | 3" | 1-1/2" | - | - |
| TP1 | TRAP PRIMER TAILPIECE. GRAVITY FED DEVICE WITH NO MECHANICAL PARTS. 1-1/4" TAILPIECE WITH 1/2" NOMINAL ARM FOR CONNECTION TO FLOOR DRAIN. USE TRAP PRIMER TAILPIECE IN- LIEU OF STANDARD LAVATORY TAILPIECE WHERE SPECIFIED. ASSE 1044 APPROVED. | SIOUX CHIEF 213-092 | - | - | - | - | - |
| TP2 | AUTOMATIC TRAP PRIMER DISTRIBUTION UNIT WITH 3-OUTLETS(MAX) | ZURN Z1022 -XL-DU3-LT | - | - | - | - | - |
| HB1 | HOSE BIBB RECESSED WALL HYDRANT WITH LOOSE KEY HANDLE AND 3/4" HOSE THREADED OUTLET, INTEGRAL ANTI-SIPHON, VACUUM BREAKER. MOUNT 18" ABOVE GRADE. COORDINATE MTG. HEIGHT WITH GRADING PLAN. | ZURN Z-1322XL-EZ WOODFORD B75 2493/4-BR-MH | - | - | - | - | 3/4" |
| HB2 | HOSE BIBB POLISHED CHROME WALL SILL FAUCET WITH 3/4" FLANGED FEMALE INLET, TEE HANDLE AND 3/4" HOSE THREAD OUTLET. PROVIDE WITH VACUUM BREAKER. MOUNT 18" ABOVE FLOOR. | CHICAGO 387CP-E27 | - | - | - | - | 3/4" |
| MV1 | MIXING VALVE THERMOSTATIC CONTROLLED WITH REMOVABLE STRAINER, STAINLESS STEEL PISTON AND LIQUID FILL THERMAL MOTOR WITH BELLOWS MOUNTED OUT OF WATER. SET WATER TEMP. @105°F. | SYMMONS TEMPCNTRL 7-200 | - | - | - | 3/4" | 3/4" |
| VTR | VENT THROUGH ROOF TERMINAL. REFER TO ARCHITECTURAL DETAIL. | - | - | - | - | - | - |
| EW1 | ELECTRIC WATER HEATER 1,500 WATTS, 208 VOLT, SINGLE PHASE, 30 GALLON ELECTRIC WATER HEATER. | RHEEM EGSP30 | - | - | - | 3/4" | 3/4" |
| HWP1 | HOT WATER RECIRCULATOR PUMP WITH INTEGRAL TIMER & AQUASTAT. THREE SPEED, WET ROTOR, DIRECT DRIVE, CENTRIFUGAL PUMP. UL LISTED AND CSA APPROVED. 120V, 85 WATTS, 1/25 HP, CORD. ALL BRONZE CONSTRUCTION. | GRUNDFOS UP 15-18B7A/T | - | - | - | - | 3/4" |
| ET1 | EXPANSION TANK 2.5 GAL, 16 GA. STEEL TANK, BUTYL RUBBER / POLYPROPYLENE WATER CHAMBER. | FLEXCON PH 5 | - | - | - | - | 3/4" |
| WC0 | CAST IRON TEE WALL CLEAN-OUT WITH BRONZE PLUG AND ROUND STAINLESS STEEL COVER PLATE. SIZE C.O. SAME AS LINE SIZE (2-1/2" MINIMUM). PROVIDE PVC TO NO-HUB ADAPTERS FOR PVC DWV APPLICATIONS. | SMITH 4351S-Y | 2-1/2" MIN. | - | - | - | - |
| C0 | THREADED CLEAN-OUT PLUG SIZE CLEANOUT SAME AS LINE SIZE. | - | - | - | - | - | - |
| G1 | RESIDENTIAL GARBAGE DISPOSAL 1/2 HP, 120V, 1Ø WITH STAINLESS STEEL GRIND CHAMBER, CUTTING ELEMENTS AND TURNTABLE. | IN-SINK-ERATOR 333SS | - | - | - | - | - |

THE OFFICIAL RECORD OF THIS SHEET IS THE ELECTRONIC FILE DIGITALLY SIGNED AND SEALED UNDER RULE 61G15-23.004, F.A.C.
GENERAL DISCLAIMER: TO THE BEST OF THE ARCHITECT'S OR ENGINEER'S KNOWLEDGE, THE PLANS AND SPECIFICATIONS COMPLY WITH THE APPLICABLE MINIMUM BUILDING CODES AND THE APPLICABLE FIRE SAFETY STANDARDS AS DETERMINED BY THE LOCAL AUTHORITY IN ACCORDANCE WITH FBC 1108.4.4 AND CHAPTER 63, FLORIDA STATUTES.

| PLUMBING FIXTURE SCHEDULE | | | | | | | | | | | | | | | | |
|---|---|---|---|------|--------|--------|-------------------|---------------------|---|--|---------------------------|------|--------|----|------|--|
| MARK | DESCRIPTION | SELECTION | W OR S | TRAP | VENT | HW | CW | MARK | DESCRIPTION | SELECTION | W OR S | TRAP | VENT | HW | CW | |
| P01 WATER CLOSET | HANDICAPPED ** WATER CLOSET <u>BOWL</u> : WHITE WALL MOUNTED WITH BACK OUTLET, VITREOUS CHINA, ELONGATED BOWL, SIPHON JET, REAR SPUD, LOW CONSUMPTION FLUSH (1.28 GPF). MTD. 17" AFF TO RIM. <u>SEAT</u> : WHITE SOLID PLASTIC, HEAVY DUTY, ELONGATED, OPEN FRONT (WITHOUT COVER), STAINLESS STEEL CHECK HINGES, INTEGRAL MOLDED BUMPERS <u>FLUSH VALVE ASSEMBLY</u> : CONCEALED SENSOR ACTIVATED FLUSHOMETER, 1" IPS ANGLE STOP WITH BACK-FLOW PREVENTION, 1-1/2" TOP SPUD, 120V TRANSFORMER, 24VAC SOLENOID OPERATOR, (ONE TRANSFORMER SERVERS UP TO 10 FLUSH VALVES, AND ALL WIRING IS TO BE CONCEALED), ROUGH-IN DIMENSION MUST BE COORDINATED FOR CLEARANCE OF HANDICAPPED GRAB BAR WHERE APPLICABLE. <u>CARRIER</u> : SINGLE VERTICAL ADJUSTABLE WATER CLOSET CARRIER WITH EPOXY COATED CAST IRON FITTING. CONFIRM HAND. ADA COMPLIANT INSTALLED SO THAT TOP OF SEAT IS 18" AFF. | AMERICAN STANDARD 2634.101.020 PROFLO PFTSCOF2000WH AMERICAN STANDARD 606B222.007 PK00.HAC/MAC ZURN Z1202-N4 | 3" | INT. | 2" | - | 1" | P05 URINAL | NON-HANDICAPPED URINAL <u>URINAL</u> : WHITE, WALL HUNG VITREOUS CHINA, REAR SPUD, 14" PROJECTION, LOW CONSUMPTION FLUSH (0.125 GPF), 304 STAINLESS STEEL BOLTS AND WASHERS <u>FLUSH VALVE ASSEMBLY</u> : CONCEALED SENSOR ACTIVATED FLUSHOMETER (0.125 GALLON FLUSH), 3/4" INLET, INTEGRAL BACK-FLOW PROTECTION, 120V TRANSFORMER, 24VAC SOLENOID OPERATOR, (ONE TRANSFORMER SERVERS UP TO 10 FLUSH VALVES, AND ALL WIRING IS TO BE CONCEALED), ROUGH-IN DIMENSION MUST ALLOW FOR FLUSH VALVE CLEARANCE OF HANDICAPPED GRAB BAR WHERE APPLICABLE, OR OFFSET MAY BE REQUIRED. <u>CARRIER</u> : FLOOR MOUNTED CARRIER WITH SUPPORT PLATE, | AMERICAN STANDARD 6515.001 AMERICAN STANDARD 606B301.007 PK00.HAC/MAC ZURN Z1221 | 2" | INT. | 1-1/2" | - | 3/4" | |
| | P10 LAV | HANDICAPPED ** TEMPERED WATER <u>BOWL</u> : WHITE, WALL MOUNTED, VITREOUS CHINA, 20"X18", <u>SINGLE CENTER FAUCET HOLE</u> . <u>FAUCET</u> : CHROME FINISHED SENSOR FAUCET, ADA COMPLIANT, VANDAL RESISTANT AERATOR, MOUNT IN CENTER HOLE. 120V TRANSFORMER, 24VAC SOLENOID OPERATOR. ALL WIRING IS TO BE CONCEALED. <u>DRAIN</u> : FLAT GRID, CHROME FINISH, 1-1/4" OUTLET WITH ADA COMPLIANT OFFSET TAILPIECE. PROVIDE PROTECTIVE INSULATION AS REQUIRED BY ADA. <u>P-TRAP</u> : CHROME FINISHED WITH TWO UNIONS, 1-1/4" INLET AND 1-1/2" OUTLET, WITHOUT CLEANOUT, WALL ESCUTCHEON, WASTE LINE INSULATION. <u>SUPPLY</u> : TWO REQUIRED, CHROME PLATED, LOOSE KEY ANGLE VALVE, WALL ESCUTCHEON, FLEXIBLE TUBE RISER, 3/8" INLET AND OUTLET CONNECTIONS. PROVIDE PROTECTIVE INSULATION AS REQUIRED BY ADA**. <u>MIXING VALVE</u> : THERMOSTATICALLY CONTROLLED POINT OF USE MIXING VALVE. LEAD FREE. ASSE 1070 COMPLIANT. SET TEMPERATURE TO 80°F. RUN 3/8"TW TO FAUCET. <u>CARRIER</u> : PROVIDE FLOOR MOUNTED WALL CARRIER WITH CONCEALED WALL PLATE. MOUNT WITH APRON AT 29"(MIN) AND RIM AT 34"(MAX). | AMERICAN STANDARD 0356041.020 AMERICAN STANDARD 775B103.002 PK00.HAC DEARBORN BRASS 760W-1 MCGUIRE 8902CNC MCGUIRE LF2165CCLK PLUMBEREX "PRO-2000" AMERICAN STANDARD 605XTMV1070.000 ZURN Z1231 | 2" | 1-1/4" | 1-1/4" | 3/8"(1) - 3/8" TW | 1/2"(1) - 3/8" TW | | | | | | | | |
| P02 WATER CLOSET | NON-HANDICAPPED WATER CLOSET <u>BOWL</u> : WHITE WALL MOUNTED WITH BACK OUTLET, VITREOUS CHINA, ELONGATED BOWL, SIPHON JET, REAR SPUD, LOW CONSUMPTION FLUSH (1.28 GPF). MTD. 14" AFF TO RIM. <u>SEAT</u> : WHITE SOLID PLASTIC, HEAVY DUTY, ELONGATED, OPEN FRONT (WITHOUT COVER), STAINLESS STEEL CHECK HINGES, INTEGRAL MOLDED BUMPERS <u>FLUSH VALVE ASSEMBLY</u> : CONCEALED SENSOR ACTIVATED FLUSHOMETER, 1" IPS ANGLE STOP WITH BACK-FLOW PREVENTION, 1-1/2" TOP SPUD, 120V TRANSFORMER, 24VAC SOLENOID OPERATOR, (ONE TRANSFORMER SERVERS UP TO 10 FLUSH VALVES, AND ALL WIRING IS TO BE CONCEALED), ROUGH-IN DIMENSION MUST BE COORDINATED FOR CLEARANCE OF HANDICAPPED GRAB BAR WHERE APPLICABLE. <u>CARRIER</u> : SINGLE VERTICAL ADJUSTABLE WATER CLOSET CARRIER WITH EPOXY COATED CAST IRON FITTING. CONFIRM HAND. | AMERICAN STANDARD 2634.101.020 PROFLO PFTSCOF2000WH AMERICAN STANDARD 606B222.007 PK00.HAC/MAC ZURN Z1202-N4 | 3" | INT. | 2" | - | 1" | | | | | | | | | |
| P03 WATER CLOSET | HANDICAPPED ** <u>BOWL</u> : WHITE FLOOR MOUNTED WITH BOTTOM OUTLET, VITREOUS CHINA, SIPHON-JET, ELONGATED BOWL, 18" AFF TO SEAT, BOLT CAPS WITH CAULK, LOW CONSUMPTION FLUSH (1.28 GPF). BOWL AND SEAT DIMENSIONS MUST MATCH WITHIN 1/4". <u>SEAT</u> : WHITE SOLID PLASTIC, HEAVY DUTY, ELONGATED, OPEN FRONT (WITHOUT COVER), STAINLESS STEEL SELF-SUSTAINING CHECK HINGES, INTEGRAL MOLDED BUMPERS. <u>FLUSH VALVE ASSEMBLY</u> : 1-1/2" HIGH ABOVE RIM, PISTON TYPE (1.28 GALLON FLUSH), CHROME FINISH, ADA COMPLIANT. 120V TRANSFORMER, 24VAC SOLENOID OPERATOR, SENSOR OPERATED VALVE, 1" INLET, 1-1/2" OUTLET, INTEGRAL SCREWDRIVER ADJUSTABLE ANGLE STOP AND CHECK VALVE WITH COVER, VACUUM BREAKER, WALL AND SPUD FLANGES, SWEAT SOLDER ADAPTER KIT, SOLID RING PIPE SUPPORT, ROUGH-IN DIMENSION MUST ALLOW FOR FLUSH VALVE CLEARANCE OF HANDICAPPED GRAB BAR WHERE APPLICABLE, OR OFFSET FITTING MAY BE REQUIRED. | AMERICAN STANDARD 3043001.020 PROFLO PFTSCOF2000WH AMERICAN STANDARD 61475M121.002 PK00.HAC/MAC | 3" | INT. | 2" | - | 1" | | | | | | | | | |
| | P04 URINAL | HANDICAPPED ** URINAL <u>URINAL</u> : WHITE, WALL HUNG VITREOUS CHINA, REAR SPUD, 14" PROJECTION, 17" TO LIP, LOW CONSUMPTION FLUSH (0.125 GPF), 304 STAINLESS STEEL BOLTS AND WASHERS <u>FLUSH VALVE ASSEMBLY</u> : CONCEALED SENSOR ACTIVATED FLUSHOMETER (0.125 GALLON FLUSH), 3/4" INLET, INTEGRAL BACK-FLOW PROTECTION, 120V TRANSFORMER, 24VAC SOLENOID OPERATOR, (ONE TRANSFORMER SERVERS UP TO 10 FLUSH VALVES, AND ALL WIRING IS TO BE CONCEALED), ROUGH-IN DIMENSION MUST ALLOW FOR FLUSH VALVE CLEARANCE OF HANDICAPPED GRAB BAR WHERE APPLICABLE, OR OFFSET MAY BE REQUIRED. <u>CARRIER</u> : FLOOR MOUNTED CARRIER WITH SUPPORT PLATE, | AMERICAN STANDARD 6515.001 AMERICAN STANDARD 606B301.007 PK00.HAC/MAC ZURN Z1221 | 2" | INT. | 1-1/2" | - | 3/4" | | | | | | | | |
| ** FIXTURE AND ALL ATTACHMENTS SHALL COMPLY WITH THE 8TH EDITION (2023) FBC/ACCESSIBILITY CODE. FIXTURE TO BE MOUNTED PER THIS SCHEDULE UNLESS NOTED OTHERWISE IN PLAN. FLUSH VALVE IS TO BE ON THE SIDE TOWARDS THE ASSOCIATED LAVATORY WHERE APPLICABLE. (1) BRANCH RUNOUT TO FIXTURE LINE SIZE. PROVIDE TEE IN CW LINE AFTER STOP TO RUN TO MIXING VALVE AND FAUCET. RUN HW TO MIXING VALVE. (2) PROVIDE KNOCKOUT(S) ON BOTTOM OF WATER COOLER FOR CHORD(S) AND PLUG(S) TO RECEPTACLE. RECEPTACLE SHALL BE ACCESSIBLE AND NOT LOCATED BEHIND THE SHROUD. | | | | | | | | | | | | | | | | |
|  | | | STEPHEN R. FORKNER, PE PE 80532 WGI, INC. 3111 W. DR. MARTIN LUTHER KING JR. BLVD. SUITE 375 TAMPA, FL 33607 ENGINEERING BUSINESS LICENSE NO.: 33574 | | | | | FLORIDA-ALABAMA TPO | | | PLUMBING FIXTURE SCHEDULE | | | | | |
| | | | | | | | | ROAD NO. | COUNTY | FINANCIAL PROJECT ID | | | | | | |
| | | | | | | | | NORTH W STREET | ESCAMBIA | 451524-1-38-01 | | | | | | |


THE OFFICIAL RECORD OF THIS SHEET IS THE ELECTRONIC FILE DIGITALLY SIGNED AND SEALED UNDER RULE 61G15-23.004, F.A.C.
GENERAL DISCLAIMER: TO THE BEST OF THE ARCHITECT'S OR ENGINEER'S KNOWLEDGE, THE PLANS AND SPECIFICATIONS COMPLY WITH THE APPLICABLE MINIMUM BUILDING CODES AND THE APPLICABLE FIRE SAFETY STANDARDS AS DETERMINED BY THE LOCAL AUTHORITY IN ACCORDANCE WITH FBC 110.8.4.4 AND CHAPTER 63, FLORIDA STATUTES.

| | | | | | | | | |
|-----|------|------------------|---|---------------------|----------|----------------------|----------------------------------|-----------|
| No. | Date | Issue / Revision |  <p>STEPHEN R. FORKNER, PE PE 80532</p> <p>WGL, INC. 3111 W. DR. MARTIN LUTHER KING JR. BLVD. SUITE 375 TAMPA, FL 33607 ENGINEERING BUSINESS LICENSE NO.: 33574</p> | FLORIDA-ALABAMA TPO | | | <p>PLUMBING FIXTURE SCHEDULE</p> | DWG NO. |
| | | | | ROAD NO. | COUNTY | FINANCIAL PROJECT ID | | AP-602 |
| | | | | NORTH W STREET | ESCAMBIA | 451524-1-38-01 | | SHEET NO. |
| | | | | | | | | |

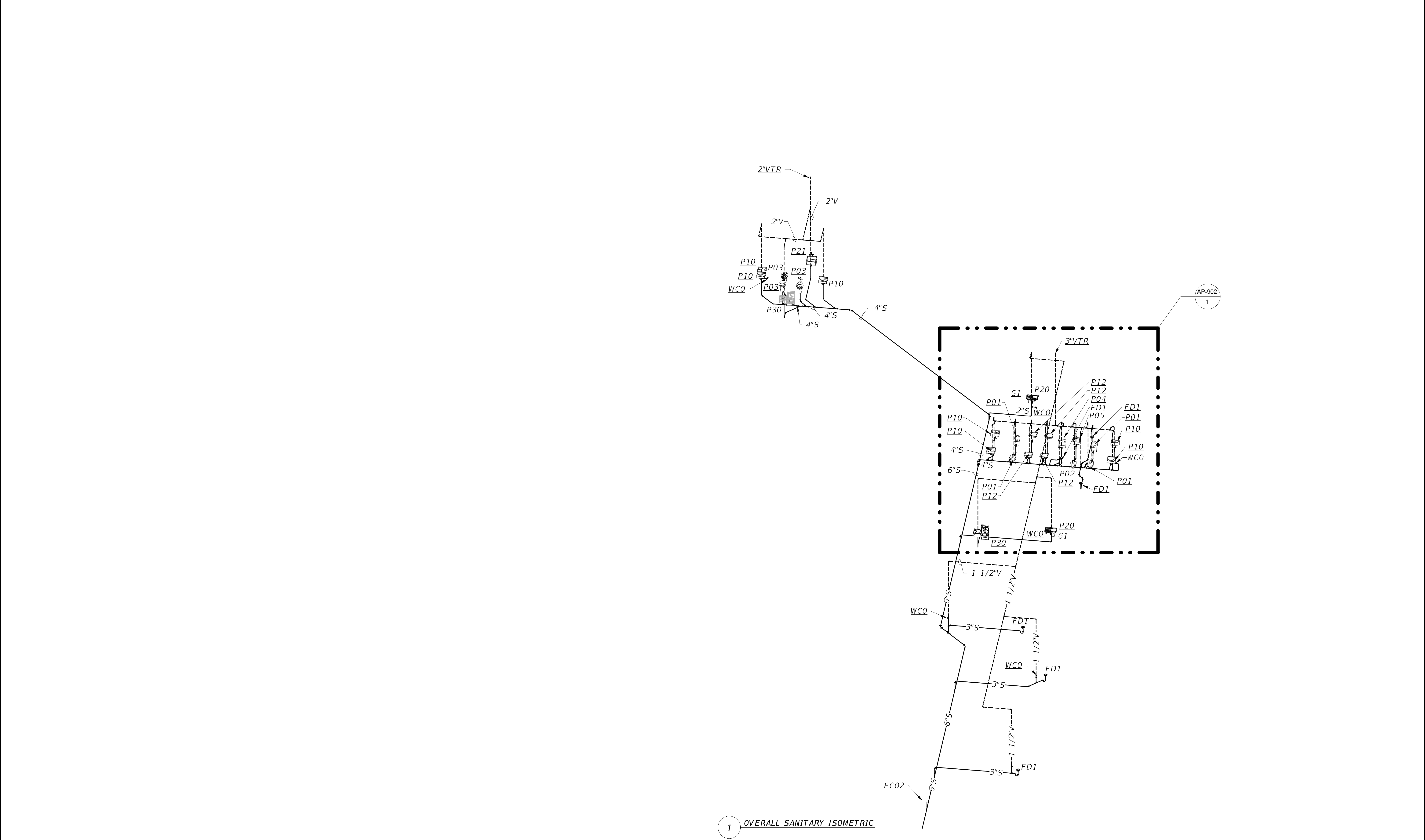
3/31/2025 2:49:38 PM


Autodesk Docs\\9345.00 ECRG\\9345.00 Escambia ECRG WGINEPEP R24.rvt

| PLUMBING FIXTURE SCHEDULE - CONTINUED | | | | | | | | | | | | | | | | |
|---|--|--|--------|--------|--------|----------------------------|----------------------|------|--|-----------------|--------|------|------|----|------|--|
| MARK | DESCRIPTION | SELECTION | W OR S | TRAP | VENT | HW | CW | MARK | DESCRIPTION | SELECTION | W OR S | TRAP | VENT | HW | CW | |
| P12 LAV | HANDICAPPED ** TEMPERED WATER <u>BOWL</u> : WHITE, UNDERMOUNT WITH UNGLAZED RIM, RECTANGULAR VITREOUS CHINA, 17.25"X13.75"X5". <u>FAUCET</u> : CHROME FINISHED SENSOR FAUCET, ADA COMPLIANT, VANDAL RESISTANT AERATOR, MOUNT IN CENTER HOLE. 120V TRANSFORMER, 24VAC SOLENOID OPERATOR. ALL WIRING IS TO BE CONCEALED. <u>DRAIN</u> : FLAT GRID, CHROME FINISH, 1-1/4" OUTLET WITH ADA COMPLIANT OFFSET TAILPIECE. PROVIDE PROTECTIVE INSULATION AS REQUIRED BY ADA. <u>P-TRAP</u> : CHROME FINISHED WITH TWO UNIONS, 1-1/4" INLET AND 1-1/2" OUTLET, WITHOUT CLEANOUT, WALL ESCUTCHEON, WASTE LINE INSULATION. <u>SUPPLY</u> : TWO REQUIRED, CHROME PLATED, LOOSE KEY ANGLE VALVE, WALL ESCUTCHEON, FLEXIBLE TUBE RISER, 3/8" INLET AND OUTLET CONNECTIONS. PROVIDE PROTECTIVE INSULATION AS REQUIRED BY ADA**. <u>MIXING VALVE</u> : THERMOSTATICALLY CONTROLLED POINT OF USE MIXING VALVE. LEAD FREE. ASSE 1070 COMPLIANT. SET TEMPERATURE TO 80°F. RUN 3/8"TW TO FAUCET. | AMERICAN STANDARD 0315.000 AMERICAN STANDARD 775B103.002 PK00.HAC DEARBORN BRASS 760W-1 MCGUIRE 8902CNC MCGUIRE LF2165CCLK PLUMBEREX "PRO-2000" AMERICAN STANDARD 605XTMV1070.000 | 2" | 1-1/4" | 1-1/4" | 3/8"(1) - 3/8" TW | - 3/8" | P41 | RESIDENTIAL TYPE VALVE BOX FOR RESIDENTIAL REFRIGERATOR AND DISHWASHER ROUGH-IN AND MAKE ALL CONNECTIONS. ONE 1/2" HOSE BIBB AND 7-1/2" X 9" X 3-1/2" BOX. NOTE: PROVIDE 4" BOX IN STUD WALLS. | WATER-TITE 9700 | - | - | - | - | 1/2" | |
| | | | | | | | | | | | | | | | | |
| P20 SINK | HANDICAPPED **/NON-HANDICAPPED HOT/ COLD WATER (DOUBLE BOWL) <u>BOWL</u> : TWO COMPARTMENT, COUNTERTOP-MOUNTED, STAINLESS STEEL, 18 GAUGE-TYPE 302, 29"x18"x5.5" INCHES OVERALL, THREE FAUCET HOLES IN CENTER OF BACK LEDGE. <u>FAUCET</u> : 9-1/2 INCH SWING SPOUT, AERATOR (1.5 GPM), LEVER HANDLES, CHROME FINISHED, ADA COMPLIANT. <u>DRAIN</u> : CONICAL STRAINER WITH STOPPER, 1-1/2 INCH OUTLET. <u>P-TRAP</u> : CHROME FINISHED WITH TWO UNIONS, 1-1/2" INLET AND OUTLET, WITHOUT CLEANOUT. <u>SUPPLY</u> : TWO REQUIRED, CHROME PLATED, LOOSE KEY ANGLE VALVES, WALL ESCUTCHEON, FLEXIBLE TUBE RISER, 3/8" INLET CONNECTIONS. <u>MIXING VALVE</u> : THERMOSTATICALLY CONTROLLED POINT OF USE MIXING VALVE. LEAD FREE. ASSE 1070 COMPLIANT. SET TEMPERATURE TO 80°F. RUN 3/8"TW TO FAUCET. | ELKAY LRAD 291855 (CUSTOM PUNCH) CHICAGO 1888-E35-369ABCP ELKAY LK-35 MCGUIRE 8912CNC MCGUIRE 2165CCLK ZURN 38-ZW1070XLCOMP | 2" | 2" | 2" | 3/8"(1) - 3/8" TW | 1/2"(1) - 3/8" | | | | | | | | | |
| P21 | MOP SINK ONE-PIECE CONSTRUCTION, 24"x24"x10", FLOOR MOUNTED TYPE. FAUCET WITH PAIL HOOK AND HOSE END, VACUUM BREAKER, INTEGRAL STOPS, VANDAL PROOF HANDLE MOP HANGER, 24" X 3", 18 GA. STAINLESS STEEL BUMPER GUARD. 12 OZ. SILICONE SEALANT. 30" HOSE AND BRACKET COMBINATION. | FIAT MSB 2424 CHICAGO 305-VB-R-VPH FIAT 889-CC FIAT 833-AA FIAT 832-AA | 3" | 3" | 2" | 1/2" | 1/2" | | | | | | | | | |
| P30 | HANDICAPPED ** WHEELCHAIR ACCESSIBLE, NON-RECESSED, VANDAL-RESISTANT BOTTLE FILLING STATION & BI-LEVEL COOLER. NON-FILTERED REFRIGERATED STAINLESS. CHILLING CAPACITY OF 8.0 GPH 50°F BASED ON 80° F INLET WATER. FEATURES SHALL INCLUDE STAINLESS STEEL TOP AND SIDES, WITH SIDE AND FRONT PUSHBARS, GRID STRAINER, VANDAL RESISTANT. FURNISHED WITH VANDAL RESISTANT BUBBLE, ELECTRONIC BOTTLE FILLER BUTTON WITH SENSOR ACTIVATION. PRODUCT SHALL BE WALL MOUNT (ON WALL) AND RATED FOR INDOOR APPLICATIONS. 370 WATTS @ 120V/1PH/60HZ. <u>P-TRAP</u> : 1-1/2", CAST BRASS WITHOUT CLEAN OUT. 1/2" STOP. MOUNT WITH BUBBLERS AT 30" & 36" AFF. SEE NOTE (2). | ELKAY LZSTL8WSSK MCGUIRE 8912CNC | 2" | 1-1/2" | 1-1/4" | - | 3/8" | | | | | | | | | |
| ** FIXTURE AND ALL ATTACHMENTS SHALL COMPLY WITH THE 8TH EDITION (2023) FBC/ACCESSIBILITY CODE. FIXTURE TO BE MOUNTED PER THIS SCHEDULE UNLESS NOTED OTHERWISE IN PLAN. FLUSH VALVE IS TO BE ON THE SIDE TOWARDS THE ASSOCIATED LAVATORY WHERE APPLICABLE. (1) BRANCH RUNOUT TO FIXTURE LINE SIZE. PROVIDE TEE IN CW LINE AFTER STOP TO RUN TO MIXING VALVE AND FAUCET. RUN HW TO MIXING VALVE. (2) PROVIDE KNOCKOUT(S) ON BOTTOM OF WATER COOLER FOR CHORD(S) AND PLUG(S) TO RECEPTACLE. RECEPTACLE SHALL BE ACCESSIBLE AND NOT LOCATED BEHIND THE SHROUD. | | | | | | | | | | | | | | | | |


| | | | | | | | | | | |
|-----|------|------------------|--|--|---------------------|----------|----------------------|--|-----------|--|
| No. | Date | Issue / Revision |  | STEPHEN R. FORKNER, PE PE 80532 WGI, INC. 3111 W. DR. MARTIN LUTHER KING JR. BLVD. SUITE 375 TAMPA, FL 33607 ENGINEERING BUSINESS LICENSE NO.: 33574 | FLORIDA-ALABAMA TPO | | | PLUMBING FIXTURE SCHEDULE - CONTINUED | DWG NO. | |
| | | | | | | | | | AP-603 | |
| | | | | | | | | | SHEET NO. | |
| | | | | | ROAD NO. | COUNTY | FINANCIAL PROJECT ID | | | |
| | | | | | NORTH W STREET | ESCAMBIA | 451524-1-38-01 | | | |

THE OFFICIAL RECORD OF THIS SHEET IS THE ELECTRONIC FILE DIGITALLY SIGNED AND SEALED UNDER RULE 61G15-23.004, F.A.C.
GENERAL DISCLAIMER: TO THE BEST OF THE ARCHITECT'S OR ENGINEER'S KNOWLEDGE, THE PLANS AND SPECIFICATIONS COMPLY WITH THE APPLICABLE MINIMUM BUILDING CODES AND THE APPLICABLE FIRE SAFETY STANDARDS AS DETERMINED BY THE LOCAL AUTHORITY IN ACCORDANCE WITH FBC 1108.4.4 AND CHAPTER 63, FLORIDA STATUTES.




| | | | | | | | | | |
|-----|------|------------------|--|--|---------------------|----------|----------------------|--|-----------|
| No. | Date | Issue / Revision |  | STEPHEN R. FORKNER, PE PE 80532 WGI, INC. 3111 W. DR. MARTIN LUTHER KING JR. BLVD. SUITE 375 TAMPA, FL 33607 ENGINEERING BUSINESS LICENSE NO.: 33574 | FLORIDA-ALABAMA TPO | | | PLUMBING - SANITARY WASTE ISOMETRIC | DWG NO. |
| | | | | | ROAD NO. | COUNTY | FINANCIAL PROJECT ID | | AP-901 |
| | | | | | NORTH W STREET | ESCAMBIA | 451524-1-38-01 | | SHEET NO. |
| | | | | | | | | | |

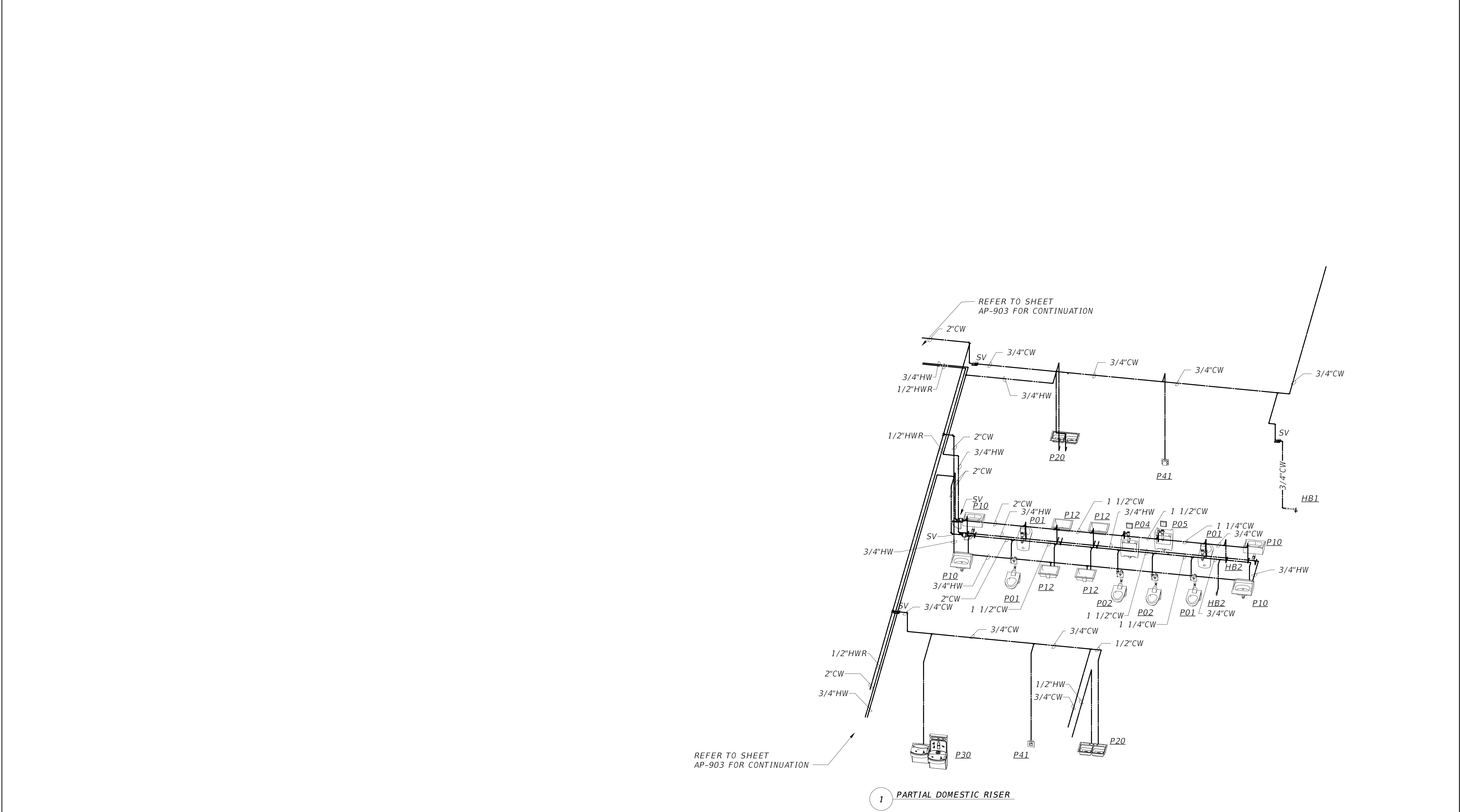



| | | | | | | | | |
|-----|------|------------------|---|---------------------|----------|----------------------|---|-----------|
| No. | Date | Issue / Revision |  <p>STEPHEN R. FORKNER, PE PE 80532</p> <p>WGI, INC. 3111 W. DR. MARTIN LUTHER KING JR. BLVD. SUITE 375 TAMPA, FL 33607 ENGINEERING BUSINESS LICENSE NO.: 33574</p> | FLORIDA-ALABAMA TPO | | | <p><i>PLUMBING - PARTIAL SANITARY WASTE ISOMETRIC</i></p> | DWG NO. |
| | | | | ROAD NO. | COUNTY | FINANCIAL PROJECT ID | | AP-902 |
| | | | | NORTH W STREET | ESCAMBIA | 451524-1-38-01 | | SHEET NO. |
| | | | | | | | | |



| | | | | | | | | |
|-----|------|------------------|---|---------------------|----------|----------------------|---|-----------|
| No. | Date | Issue / Revision |  <p>STEPHEN R. FORKNER, PE PE 80532</p> <p>WGI, INC. 3111 W. DR. MARTIN LUTHER KING JR. BLVD. SUITE 375 TAMPA, FL 33607 ENGINEERING BUSINESS LICENSE NO.: 33574</p> | FLORIDA-ALABAMA TPO | | | <p><i>PLUMBING - DOMESTIC WATER ISOMETRIC</i></p> | DWG NO. |
| | | | | ROAD NO. | COUNTY | FINANCIAL PROJECT ID | | AP-903 |
| | | | | NORTH W STREET | ESCAMBIA | 451524-1-38-01 | | SHEET NO. |

THE OFFICIAL RECORD OF THIS SHEET IS THE ELECTRONIC FILE DIGITALLY SIGNED AND SEALED UNDER RULE 61G15-23.004, F.A.C.
GENERAL DISCLAIMER: TO THE BEST OF THE ARCHITECT'S OR ENGINEER'S KNOWLEDGE, THE PLANS AND SPECIFICATIONS COMPLY WITH THE APPLICABLE MINIMUM BUILDING
CODES AND THE APPLICABLE FIRE SAFETY STANDARDS AS DETERMINED BY THE LOCAL AUTHORITY IN ACCORDANCE WITH FBC 110.8.4.4 AND CHAPTER 63, FLORIDA STATUTES.



| No. | | Date | Issue / Revision | <div></div> <div>STEPHEN R. FORKNER, PE PE 80532</div> <div>WGI, INC. 3111 W. DR. MARTIN LUTHER KING JR. BLVD. SUITE 375 TAMPA, FL 33607 ENGINEERING BUSINESS LICENSE NO.: 33574</div> | FLORIDA-ALABAMA TPO | | | PLUMBING - PARTIAL DOMESTIC WATER ISOMETRIC | DWG NO. | |
|----------------|--|----------|------------------|--|---------------------|--|--|--|-----------|--|
| | | | | | | | | | AP-904 | |
| | | | | | | | | | SHEET NO. | |
| | | | | | | | | | | |
| ROAD NO. | | COUNTY | | FINANCIAL PROJECT ID | | | | | | |
| NORTH W STREET | | ESCAMBIA | | 451524-1-38-01 | | | | | | |

THE OFFICIAL RECORD OF THIS SHEET IS THE ELECTRONIC FILE DIGITALLY SIGNED AND SEALED UNDER RULE 61G15-23.004, F.A.C.
GENERAL DISCLAIMER: TO THE BEST OF THE ARCHITECT'S OR ENGINEER'S KNOWLEDGE, THE PLANS AND SPECIFICATIONS COMPLY WITH THE APPLICABLE MINIMUM BUILDING
CODES AND THE APPLICABLE FIRE SAFETY STANDARDS AS DETERMINED BY THE LOCAL AUTHORITY IN ACCORDANCE WITH FBC 1108.4.4 AND CHAPTER 63, FLORIDA STATUTES.